

PHILIPS

hue

## Calla Outdoor pedestal

Hue White and Colour  
Ambiance

Low-volt

Matte black finish

104 x 402 mm

PSU sold separately



1743730P7



## Easy smart lighting

The grander version of the Calla bollard light. Larger, with integrated LEDs that can produce any shade of white and colour light, this extension path light is serious statement lighting.

### Limitless possibilities

- Paint your outdoors with 16 million colours
- Special light for special occasions

### Easy control and comfort

- Control it your way

### Full control from a smart device with the Hue bridge

- Requires a Philips Hue bridge

### Specially designed for your outdoor spaces

- Unwind with warm to cool white light
- Easy to install and extend
- Weather-proof (IP65)
- High-quality aluminium and superior synthetics

# Highlights

## Paint your outdoors



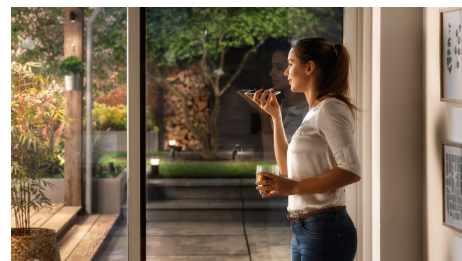
With Philips Hue outdoor lighting, there's no limit to the magic you can add. Play with 16 million colours and all shades of white light to create the effect you want. Highlight objects, trees or pathways to make your space stand out. Use the Hue app to save your favourite light settings and recall them whenever you want with the tap of a finger.

## Special light for special occasions



Holiday cheer starts here – with smart light! Use your Philips Hue lights to transform your home into a festive experience: bright reds and greens for Christmas, subtle pastels for spring or even an eerie purple glow to create the most haunted house on the street at Halloween.

## Control it your way



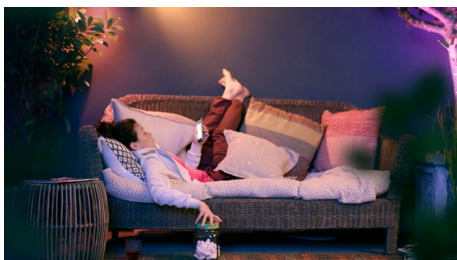
Connect your Philips Hue lights with the Bridge and start discovering the endless possibilities. Control your lights from your smartphone or tablet via the Philips Hue app, or add the indoor switches to your system to change your lights. Set timers, notifications, alarms and more for the full Philips Hue experience. Philips Hue even works with Amazon Alexa, Apple Homekit and the Google Assistant to allow you to control your lights with your voice.

## Requires a Philips Hue bridge



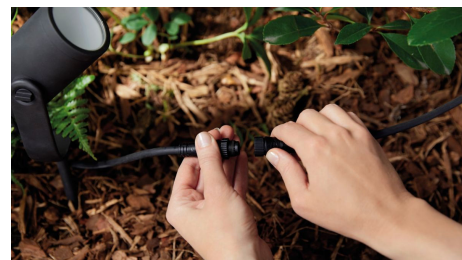
Connect your Philips Hue lights with the Bridge to control your lights from your smart phone or tablet via the Philips Hue app. Or control your Philips Hue lights with the Philips Hue dimmer indoor switch for on/off and dimming functionalities.

## Warm to cool white light



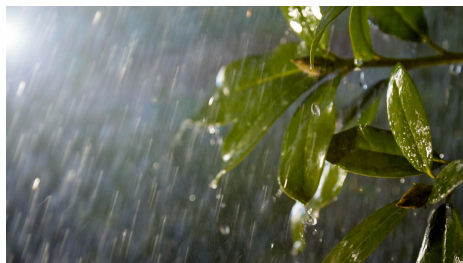
Extend your evenings with Philips Hue outdoor lighting. Set the right ambience on your patio, balcony or porch and relax. From the warm white light of a summer sun, to the ice cool daylight of winter: you can enjoy any shade of white light to fit your mood throughout the year.

## Easy to install and extend



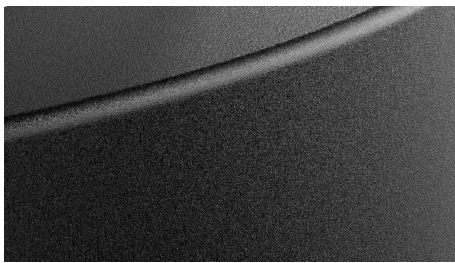
Brighten up dark paths, create highlights in your landscaping or create a unique ambience on the patio. You can do it yourself, using Hue spots or bollards. The products are based on low voltage, safe to use and easy to install. No more complexity to get lighting outdoors: start to create and extend to suit your needs.

## Weather-proof (IP65)



This Philips Hue outdoor fixture is specially designed for use in outdoor environments and has undergone rigorous tests to ensure its performance. The IP level is described by two figures: the first one refers to the protection level against dust, the second against water. This lamp is designed with IP65: this means that it is protected against low-pressure jets of water. It is a higher level of protection than IP44 and commonly used when luminaires are close to the ground or require higher protection due to certain outdoor conditions.

## High-quality



The products are made specifically for outdoor use. We use the highest-quality materials to ensure the best performance in outdoor conditions, as well as smart use of materials to optimise radio frequency.

# Specifications

### Design and finishing

- Colour: Black
- Material: Metal

### Durability

- Nominal lifetime: 25,000

### Extra feature/accessory incl.

- Dimmable with the Hue app and switches: Yes
- LED integrated: Yes

### Light characteristics

- Colour rendering index (CRI):  $\geq 80$
- Colour temperature: 2000-6500 K

### Miscellaneous

- Especially designed for: Garden, Patio
- Type: Pedestal/Post

### Product dimensions and weight

- Net weight: 1.425 kg
- Cable length: 600
- Overall height: 400 mm
- Overall length: 104 mm
- Overall width: 104 mm

### Service

- Warranty: 2 year(s)

### Technical specifications

- Lumen output at 4000K: 590
- Light colour: Coloured and white light (RGBW)
- Mains power: 50-60 Hz, Range 220 V-240 V
- Wattage bulb included: 8 W
- Maximum wattage replacement bulb: 8
- IP code: IP65 | Dust-tight and jet-proof
- Class of protection: Class III – Safe Extra Low Voltage
- Lumen output at 2700K: 350
- Number of light sources: 1

## What's supported

- Compatible with Effects feature: Yes
- Philips Hue App: Android 10.0 and above, iOS 16 or later
- WiFi: Works without Wi-Fi
- Defined support period: Minimum of 48 months after introduction date
- Max. number of accessories: 12 (with Hue Bridge)
- Compatible operating systems: iOS, Android
- Communication protocol: Bluetooth, Zigbee
- Compatibility with third-party systems: Alexa, Google Home, Apple HomeKit, IFTTT, Klikaanklikuit, Matter, Samsung SmartThings, Sonos

## Box specifications

### Packaging dimensions and weight

- EAN/UPC - product: 8718696170557
- Net weight: 1.43 kg
- Gross weight: 1.87 kg
- Height: 445 mm
- Length: 145 mm
- Width: 170 mm



© 2026 Signify Holding. All rights reserved. Signify does not give any representation or warranty as to the accuracy or completeness of the information included herein and shall not be liable for any action in reliance thereon. The information presented in this document is not intended as any commercial offer and does not form part of any quotation or contract, unless otherwise agreed by Signify. Philips and the Philips Shield Emblem are registered trademarks of Koninklijke Philips N.V.