



# ROG PHONE

## ZS600KL User Guide



## Care and safety

### Guidelines



Road safety comes first. We strongly recommend not to use your device when driving or operating any type of vehicle.



This device should only be used in environments with ambient temperatures between 0°C (32°F) and 35°C (95°F).



Turn off your device in restricted areas where the use of mobile devices is prohibited. Always obey rules and regulations when in restricted areas, such as, in aircraft, movie theater, in hospitals or near medical equipment, near gas or fuel, construction sites, blasting sites and other areas.



Use only AC adapters and cables approved by ASUS for use with this device. Refer to the rating label on the bottom of your device and ensure that your power adapter complies with this rating.



Do not use damaged power cables, accessories, and other peripherals with your device.



Keep your device dry. Do not use or expose your device near liquids, rain, or moisture.



You can put your device through x-ray machines (such as those used in conveyor belts for airport security), but do not expose the device to magnetic detectors and wands.



The device screen is made of glass. If the glass gets broken, stop using the device and do not touch the broken glass parts. Immediately send device for repair to ASUS-qualified service personnel.



Do not listen at high volume levels for long periods to prevent possible hearing damage.



Disconnect the AC power before cleaning your device. Use only a clean cellulose sponge or chamois cloth when cleaning your device screen.



Send device for repair to ASUS-qualified service personnel only.

## Proper disposal



Risk of explosion if battery is replaced by an incorrect type. Dispose of used batteries according to the instructions.



DO NOT throw the battery in municipal waste. The symbol of the crossed out wheeled bin indicates that the battery should not be placed in municipal waste.



DO NOT throw this product in municipal waste. This product has been designed to enable proper reuse of parts and recycling. The symbol of the crossed out wheeled bin indicates that the product (electrical, electronic equipment and mercury-containing button cell battery) should not be placed in municipal waste. Check local regulations for disposal of electronic products.



DO NOT throw this product in fire. DO NOT short circuit the contacts. DO NOT disassemble this product.



### WARNING

Cancer and Reproductive Harm-

[www.P65Warnings.ca.gov](http://www.P65Warnings.ca.gov)

## ZenTalk Fans Forum

([http://www.asus.com/zentalk/global\\_forward.php](http://www.asus.com/zentalk/global_forward.php))



---

**NOTE:** For more legal and e-labelling information, check on your device from **Settings > System > About phone > Legal information**.

---

---

**NOTE:** The app descriptions shown in this manual are for reference purposes only, and may not exactly match what you see on your device.

---

# Contents

## 1 Basics

Welcome!.....	7
Get your ROG Phone ready!.....	8
Starting for the first time .....	15
Using the touchscreen.....	16

## 2 There's no place like Home

<b>Zen Home features .....</b>	<b>19</b>
Home screen .....	19
Quick settings .....	20
Notifications .....	21
<b>Personalizing your Home screen .....</b>	<b>22</b>
Widgets .....	22
Wallpapers .....	23
Easy Mode .....	24
Kids Mode .....	27
Setting up the date and time.....	29
Setting up your ringtone and alert sounds.....	29
<b>Lock Screen .....</b>	<b>30</b>
Customizing your lock screen.....	30
<b>Fingerprint ID sensor.....</b>	<b>31</b>
Starting your ROG Phone for the first time .....	31
Setting up fingerprint ID from Settings .....	32
<b>Face Unlock .....</b>	<b>33</b>
Setting up face unlock from Settings.....	33

## 3 Work hard, play harder

<b>Chrome .....</b>	<b>36</b>
Launching Chrome .....	36
Sharing pages .....	37
Bookmarking pages .....	37
Clearing the browsing data .....	37
<b>Gmail.....</b>	<b>38</b>
<b>Google Calendar .....</b>	<b>39</b>
Creating events .....	39
Editing or removing events .....	39
Creating reminders .....	40
Editing or removing reminders .....	40
<b>File Manager.....</b>	<b>41</b>
<b>The Cloud.....</b>	<b>42</b>
ASUS WebStorage .....	42

## 4 Keeping in touch

<b>Call in style .....</b>	<b>43</b>
Dual SIM feature.....	43
Making calls .....	45
Receiving calls .....	47
Other call options.....	48
Managing multiple calls.....	49
Recording calls .....	49
<b>Managing contacts .....</b>	<b>50</b>
Contacts Settings .....	50
Setting up your profile .....	50
Adding contacts.....	51
Marking your favorite contacts .....	52
Social networking with your contacts .....	53
<b>Send messages and more .....</b>	<b>54</b>
Google Messenger .....	54

## 5 Fun and entertainment

<b>Using a headset.....</b>	<b>55</b>
Connecting the audio jack.....	55
<b>Google Play Music .....</b>	<b>56</b>

## 6 Your precious moments

<b>Capture moments .....</b>	<b>57</b>
Launching the Camera app .....	57
<b>Using the Gallery .....</b>	<b>61</b>
Viewing the photo location .....	61
Sharing files from the Gallery.....	61
Deleting files from the Gallery.....	61
Editing images.....	62

## 7 Staying connected

<b>Mobile network.....</b>	<b>63</b>
Enabling the mobile network .....	63
<b>Wi-Fi .....</b>	<b>63</b>
Enabling Wi-Fi .....	63
Connecting to a Wi-Fi network.....	64
Disabling Wi-Fi.....	64
<b>Bluetooth® .....</b>	<b>64</b>
Enabling Bluetooth® .....	64
Pairing your ROG Phone to a Bluetooth® device.....	65
Unpairing your ROG Phone from the Bluetooth® device.....	65
<b>Tethering .....</b>	<b>66</b>
Wi-Fi Hotspot .....	66
Bluetooth Tethering.....	67

<b>8</b>	<b>Travel and Maps</b>	
	<b>Weather .....</b>	<b>68</b>
	Launching the Weather app.....	68
	Weather home screen.....	69
	<b>Clock .....</b>	<b>70</b>
	World Clock.....	70
	Alarm clock .....	71
	Stopwatch .....	71
	Timer .....	72
<b>9</b>	<b>Zen Everywhere</b>	
	<b>Special Zen Tools.....</b>	<b>73</b>
	Sound Recorder .....	73
	Mobile Manager.....	75
	Bluelight Filter .....	76
<b>10</b>	<b>Maintain your Zen</b>	
	<b>Keeping your device up-to-date.....</b>	<b>77</b>
	Updating your system .....	77
	Storage .....	77
	Backup.....	77
	Reset.....	77
	Securing your ROG Phone.....	78
	<b>Appendix</b>	
	<b>Safety information.....</b>	<b>81</b>
	<b>Notices .....</b>	<b>83</b>
	<b>Index</b>	

## Welcome!

Explore the intuitive simplicity of ASUS ZenUI!

ASUS ZenUI is a charming and intuitive interface exclusively for ROG Phones. It provides you with special apps, which are integrated in or with other apps, to fit your unique individual needs and make your life easier while letting you have fun with your ROG Phone.



### **Camera**

With PixelMaster technology, capture those precious moments in vivid and high-quality photos and videos.



### **Mobile Manager**

Mobile Manager provides an integrated interface for several apps that are designed to optimize device performance, manage the phone power, storage usage and system notifications.



### **File Manager**

File Manager allows you to easily locate and manage your data on the internal storage of your ROG Phone and its connected external storage devices.

---

---

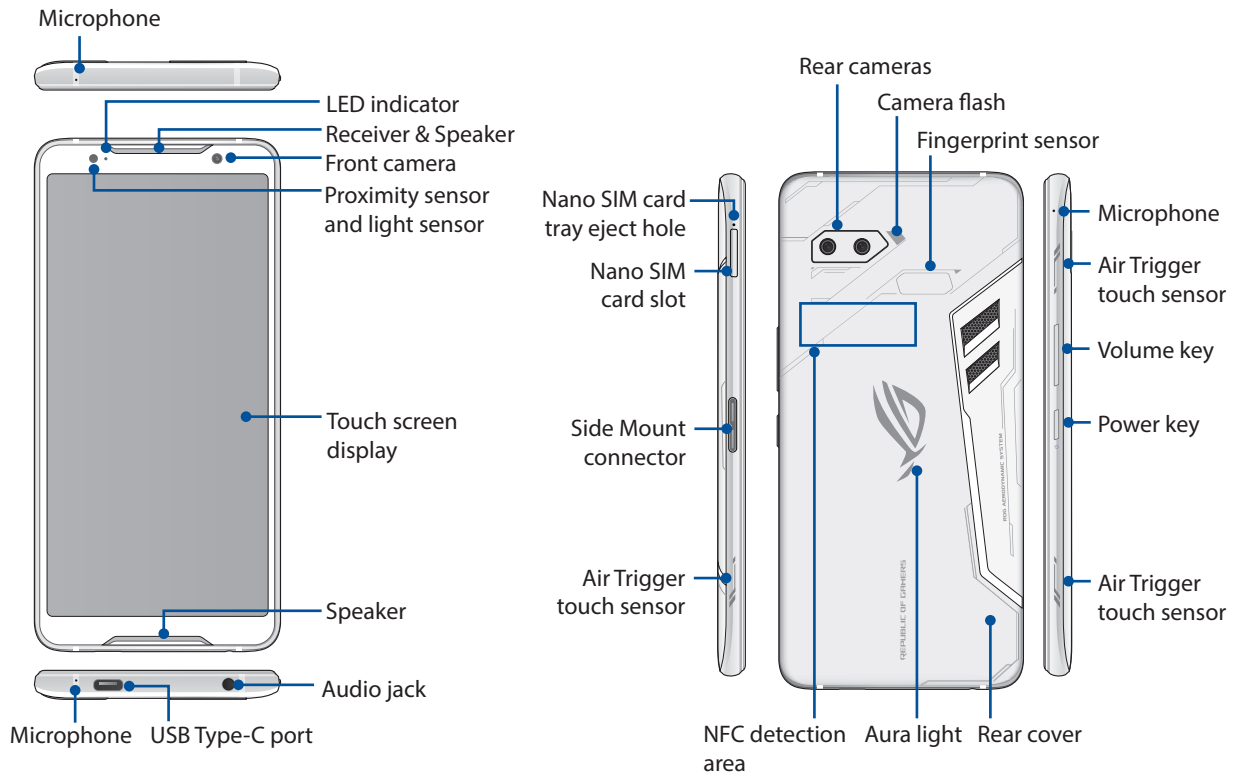
**NOTE:** Availability of ASUS ZenUI apps vary per region and ROG Phone model. Swipe up from the lower part of your Home screen to check the apps available on your ROG Phone.

---

## Get your ROG Phone ready!

### Parts and features

Take a hold of your device and have it running in a jiffy.



#### WARNING!

- To avoid network connection and battery issues:
  - DO NOT place a metallic sticker on the antenna area.
  - DO NOT use a metallic protective frame/case on your ROG Phone.
  - DO NOT cover the antenna area with your hands or other objects while using some functions such as making calls or using the mobile data connection.
- We recommend that you use ASUS-compatible screen protectors. Using non-ASUS-compatible screen protectors may cause your ROG Phone's sensor to malfunction.

#### NOTES:

- The USB Type-C port supports USB 2.0 transfer rate. The Side Mount connector Type-C port supports USB 3.1 Gen1 transfer rate.
- Go to **Settings > Advanced > AirTriggers** to set AirTriggers.

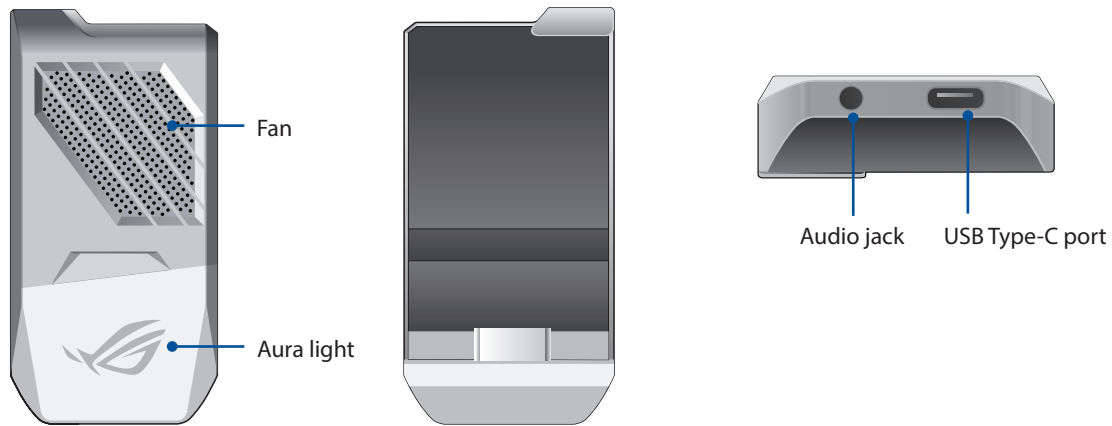
#### IMPORTANT!

- We do not recommend using a screen protector as it can interfere with the proximity sensor. If you want to use a screen protector, ensure that it does not block the proximity sensor.
- Keep the device, particularly the touch screen, dry all the time. Water or other liquids can cause the touch screen to malfunction.



## AeroActive Cooler features

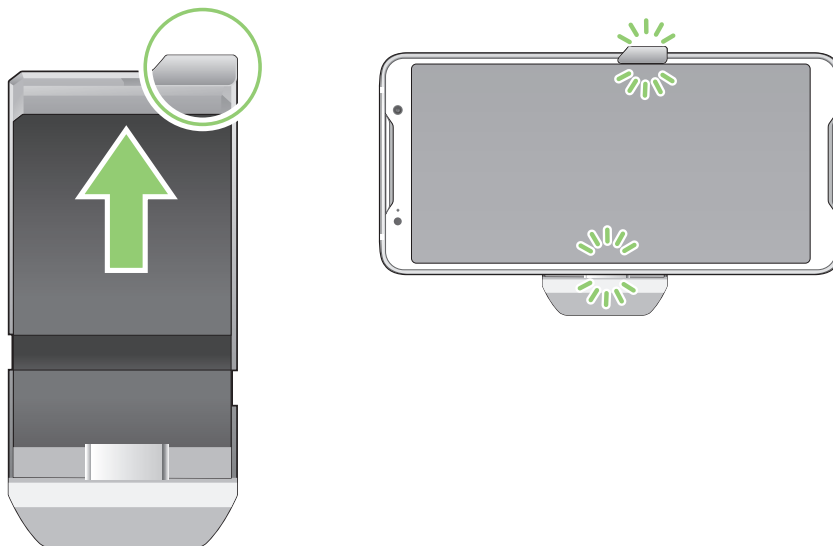
Use the AeroActive Cooler to keep your ROG Phone working at a high frequency during heavy workloads by providing a better thermal solution, and offering the ultimate user experience.



**NOTE:** Connect your AeroActive Cooler to the Side Mount connector of your ROG Phone.

### To install AeroActive Cooler:

1. Place your smartphone in a horizontal position.
2. Place the AeroActive Cooler on the back side of your phone with the ROG logo facing outwards.
3. Insert the USB plug of the AeroActive Cooler into the Side Mount connector of your Phone.
4. Push the top part of the AeroActive Cooler and snap the clip on the top side.



### NOTES:

- It is not recommended that you connect other devices to your ROG Phone when you install the phone on the AeroActive Cooler.
- Docking your ROG Phone on an accessory with fan(s) will impact the audio quality when making phone calls and recording.

## Installing a nano SIM card

Your nano SIM card slots support GSM/GPRS/ EDGE, WCDMA/HSPA+/DC-HSPA+, FDD-LTE, and TD-LTE DSDV network bands.

---

**NOTE:** To prevent connector damage, ensure to use a standard nano SIM card without a SIM adapter or the use of a cutter.

---

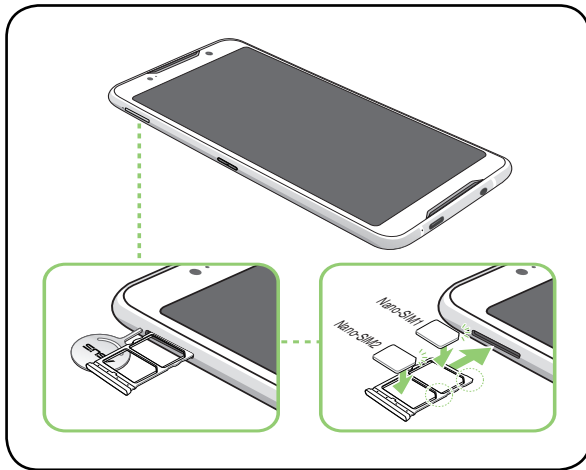
---

**CAUTION!** Be extra careful when handling a nano SIM card. ASUS is not responsible for any data loss or damage incurred to your nano SIM cards.

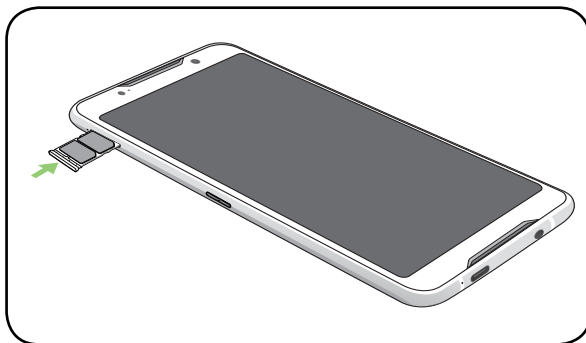
---

### To install a Nano SIM card:

1. Push a pin into the hole on the Nano SIM card tray to eject it. Insert the Nano SIM card(s) into the card slot(s).



2. Push the tray to close it.



### NOTES

- GPRS/ EDGE, WCDMA/HSPA+/DC-HSPA+, FDD-LTE, and TD-LTE DSDV network bands. Both Nano SIM cards can connect to VoLTE 4G calling service. But only one can connect to FDD-LTE, and TD-LTE data service at a time.
- Contact your telecom carrier if DSDV support is available in your area.

### CAUTION!

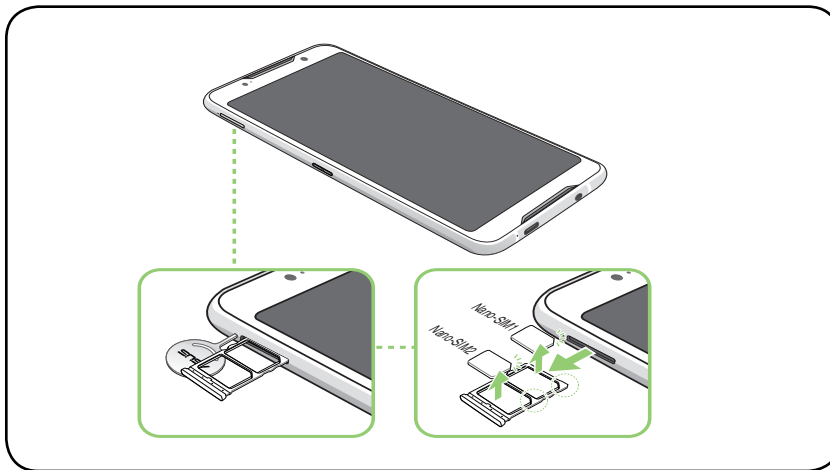
- Do not use sharp tools or solvent on your device to avoid scratches on it.
- Use only a standard Nano SIM card on your ROG Phone.

## Removing a nano SIM card

**CAUTION!** Be extra careful when handling a nano SIM card. ASUS is not responsible for any data loss or damage incurred to your nano SIM cards.

### To remove a nano SIM card:

1. Push a pin into the hole on the Nano SIM card tray to eject it. Remove the Nano SIM card(s) from the card slot(s).
2. Push the tray to close it.



## Charging your ROG Phone

Your ROG Phone comes partially charged but you must charge it fully before using it for the first time. Read the following important notices and cautions before charging your device.

---

### IMPORTANT!

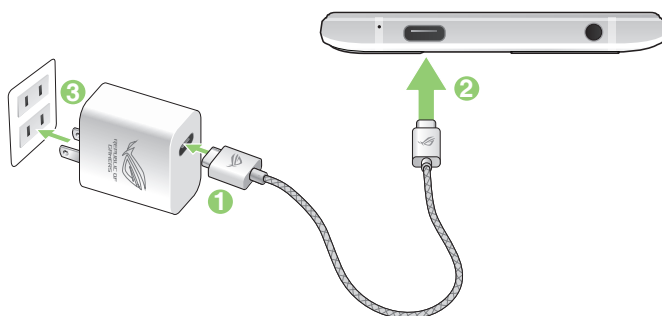
- Peel off the protective film on the AC power adapter and USB Type-C cable before using it with your device.
  - Ensure to plug the AC power adapter to a compatible power outlet. You can plug the AC power adapter to any compatible 100~240 V outlet.
  - The output voltage of the AC power adapter for this device is +5V-10V=3A, 30W.
  - When using your ROG Phone while plugged-in to a power outlet, the power outlet must be near your device and easily accessible.
  - To conserve electricity, unplug the AC power adapter from the power outlet when not in use.
  - Do not place heavy objects on top of your ROG Phone.
- 

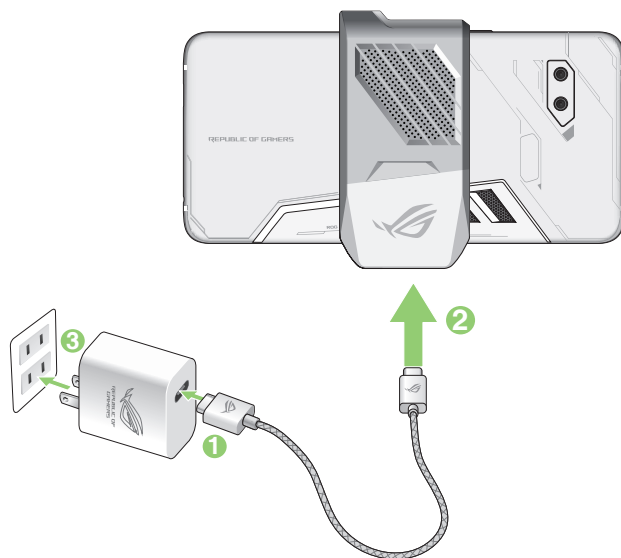
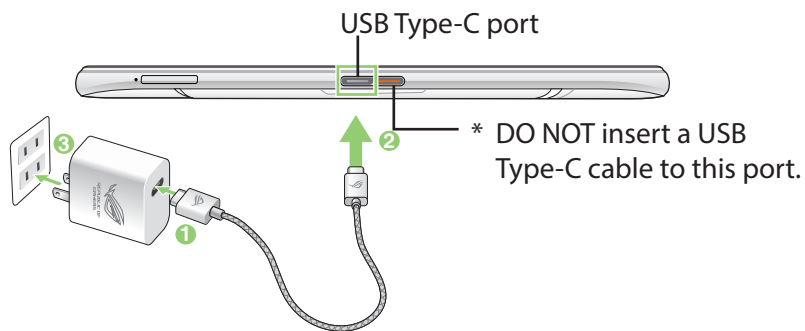
### CAUTION!

- While charging, your ROG Phone can become warm. This is normal, however, if your device becomes unusually hot, disconnect the USB Type-C cable from your device and send the device, including the AC power adapter and cable to an ASUS-qualified service personnel.
  - To prevent any damage to your ROG Phone, AC adapter, or USB Type-C cable. Ensure that the USB Type-C cable, AC adapter, and your device are connected properly before charging.
- 

To charge your ROG Phone:

1. Connect the USB Type-C cable to the power adapter.
2. Connect the USB Type-C cable to your ROG Phone.
3. Plug the AC power adapter to a grounded power outlet.





---

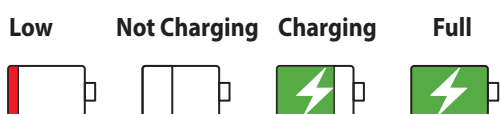
**NOTES:**

- We recommend that you charge your ROG phone through one USB Type-C port at a time.
  - Only the Side Mount connector has Display Port functionality.
  - If you connect USB Type-C OTG or charging devices to both of the USB Type-C ports on your ROG phone, the Side Mount connector will become the master and the charging current or OTG device on the bottom port will be limited.
-

---

**IMPORTANT!**

- When using your ROG Phone while it is plugged to a power outlet, the grounded power outlet must be near to the unit and easily accessible.
- When charging your ROG Phone through your computer, ensure that you plug the USB Type-C cable to your computer's USB port.
- Avoid charging your ROG Phone in an environment with ambient temperature of above 35°C (95°F).
- DO NOT charge your ROG phone underwater or when the USB connector is wet.
- Charge your ROG Phone for eight (8) hours before using it in battery mode for the first time.
- The status of battery charge is indicated by the following icons:



---

**NOTES:**

- For safety purposes, use **ONLY** the bundled power adapter and cable to avoid damaging your device and prevent the risk of injury.
  - For safety purposes, use **ONLY** the bundled power adapter and cable to charge your ROG Phone.
  - The input voltage range between the wall outlet and this adapter is AC 100V - 240V. The output voltage of the device is +5V-10V=3A, 30W.
- 

4. When fully-charged, disconnect the USB cable from your ROG Phone first before unplugging the AC power adapter from the power outlet.

---

**NOTES:**

- You can use your device while charging but it may take longer to fully charge the device.
  - Charging your device via USB port of a computer may take longer to fully charge the device.
  - If your computer does not provide enough power for charging via USB port, charge your ROG Phone using the AC power adapter plugged to a power outlet instead.
-

## Using NFC

---

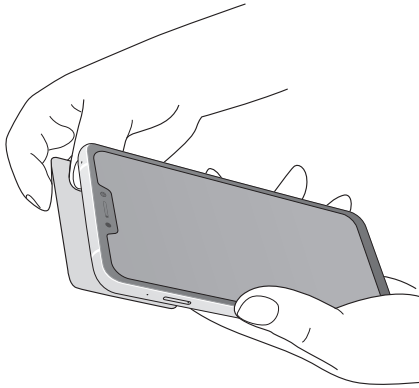
**NOTE:** NFC is only available in selected regions/countries.

---

You can use NFC in the following three scenarios:

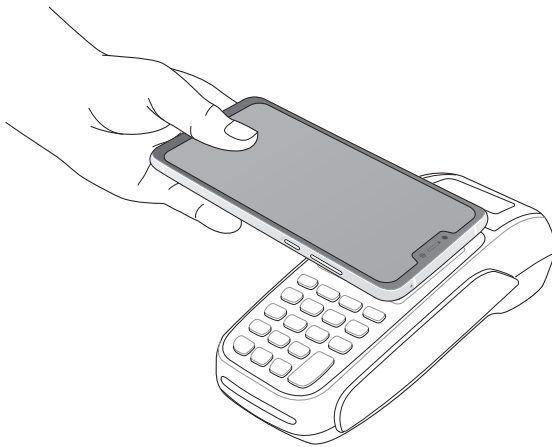
**Reader mode:** Your phone reads information from a contactless card, NFC tag, or other NFC devices.

Place the NFC area of your phone on the contactless card, NFC tag, or NFC device.



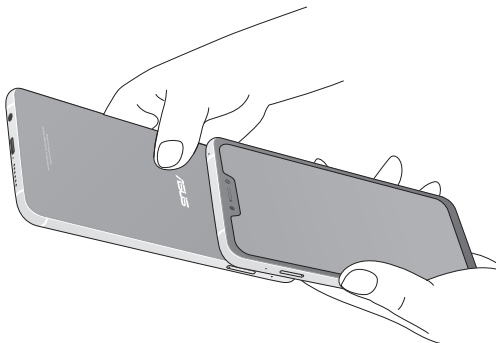
**Card Emulation mode:** Your phone can be used like a contactless card.

Place the NFC area of your phone on the NFC area of the NFC reader.



**Peer-to-Peer mode:** Transfers photos, contacts, or other data between your phone and an NFC-enabled smartphone.

Bring the NFC areas of both smartphones together, without any space between them.



## Turning your ROG Phone on or off

### Turning your device on

To turn your device on, press and hold the power button until your device vibrates and starts up.

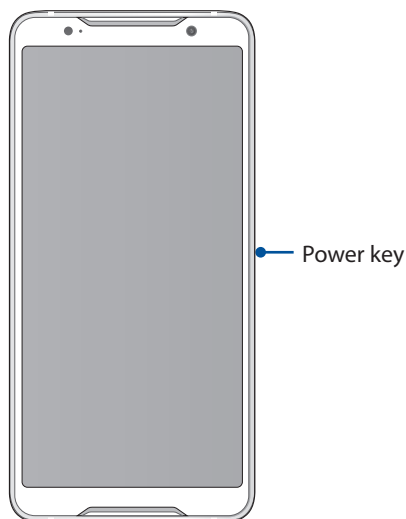
### Turning your device off

To turn your device off:

1. If your screen is turned off, press the power button to turn it on. If your screen is locked, unlock the device screen.
2. Press and hold the power button, then when prompted, tap **Power off** then tap **OK**.

### Sleep mode

To put your device in sleep mode, press the power button once until the screen turns off.





## Starting for the first time

When you turn your ROG Phone on for the first time, Setup Wizard will guide you through the setup process. Follow the onscreen instructions to select your language, set up your mobile network, Wi-Fi and security features, and sync accounts.

Use your Google or ASUS account to set up your device, if you do not have a Google or ASUS account yet, go ahead and create one.

## Google Account

Using a Google Account allows you to fully utilize these Android OS features:

- Organize and see all your information from anywhere.
- Automatically backup all your data.
- Leverage Google services conveniently from anywhere.

## ASUS Account

Having an ASUS Account gets you to enjoy the following perks:

- Personalized ASUS support service and warranty extension for registered products.
- Free 5 GB of Cloud storage space.
- Receive the latest device and firmware updates.

## Battery power conservation tips

The battery charge is the lifeline of your ROG Phone. Here are some battery power conservation tips that helps preserve the power of your ROG Phone battery.

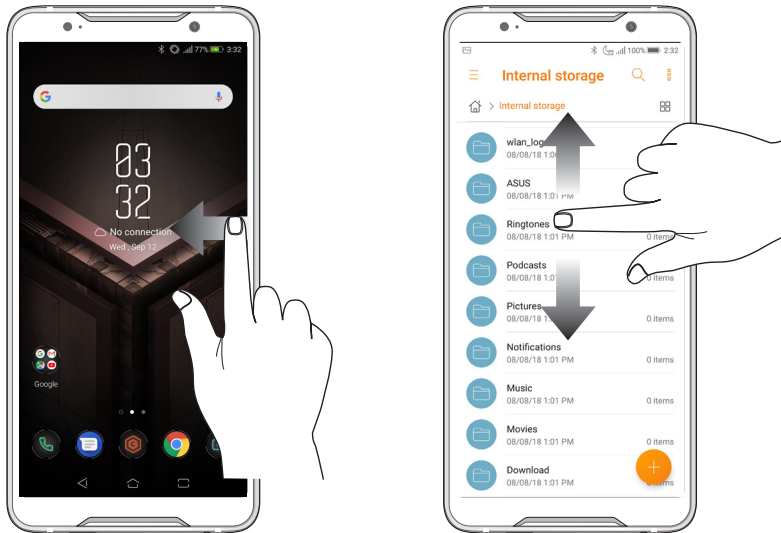
- Close all running apps that are not in use.
- When not in use, press the power button to put the device in sleep mode.
- Decrease brightness of display.
- Keep the speaker volume to a low level.
- Disable Wi-Fi feature.
- Disable Bluetooth feature.
- Disable the screen auto-rotate feature.
- Disable all auto-sync features in your device.



## Moving through pages or screens

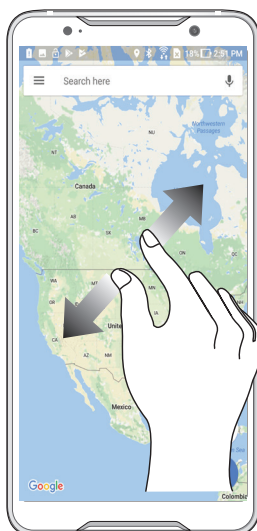
Do any of the following:

- Swipe your finger to the left or to the right to switch between screens or to flip through a Gallery of images.
- Scroll your finger up or down to go through web pages or list of items.



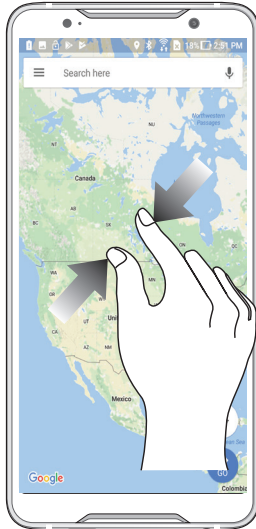
## Zooming in

Spread apart your two fingers on the touch panel to zoom in an image in Gallery or Maps, or zoom in a web page.



## Zooming out

Bring together your two fingers on the touch panel to zoom out an image in Gallery or Maps, or zoom out of a web page.



---

**NOTE:** You may not be able to zoom in/out of some web pages as these pages may have been designed specifically to fit your mobile screen.

---

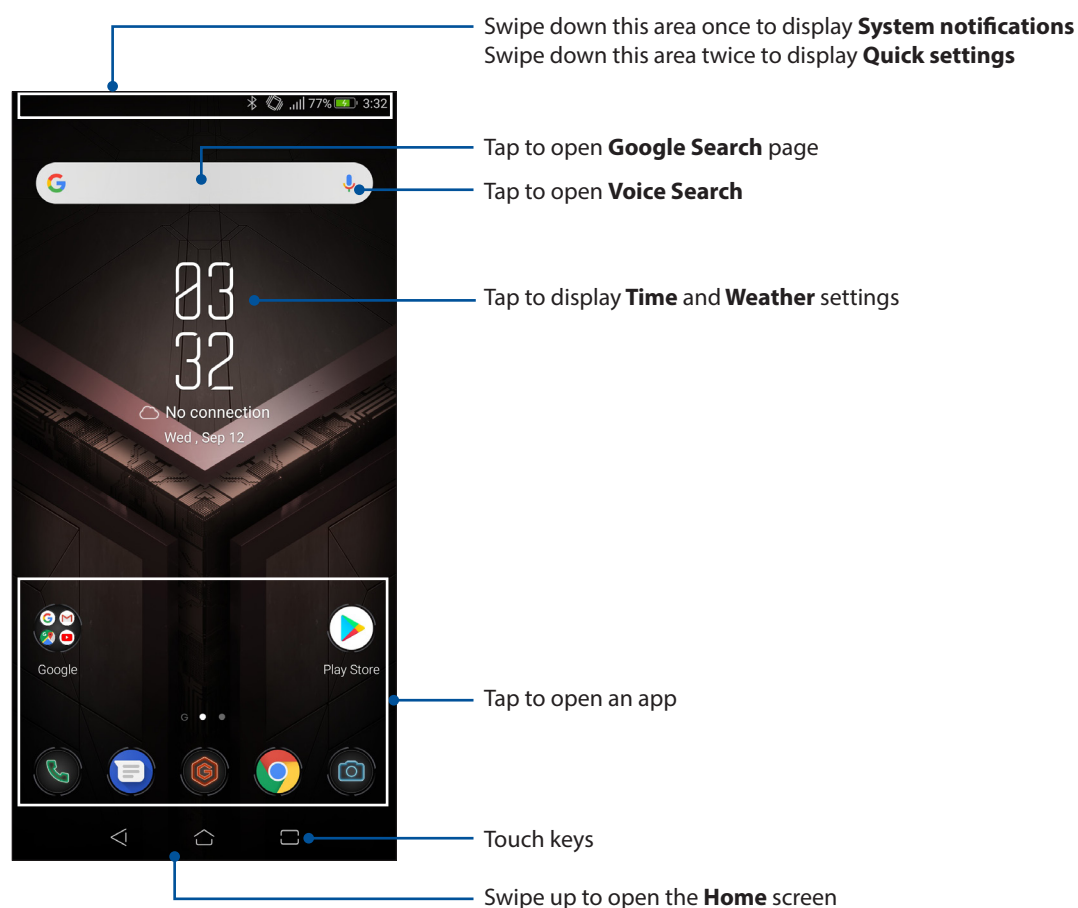
# *There's no place like Home*

# 2

## Zen Home features

### Home screen

Get reminders of important events, app and system updates, weather forecasts, and text messages from people who really matter to you, right from your Home screen.

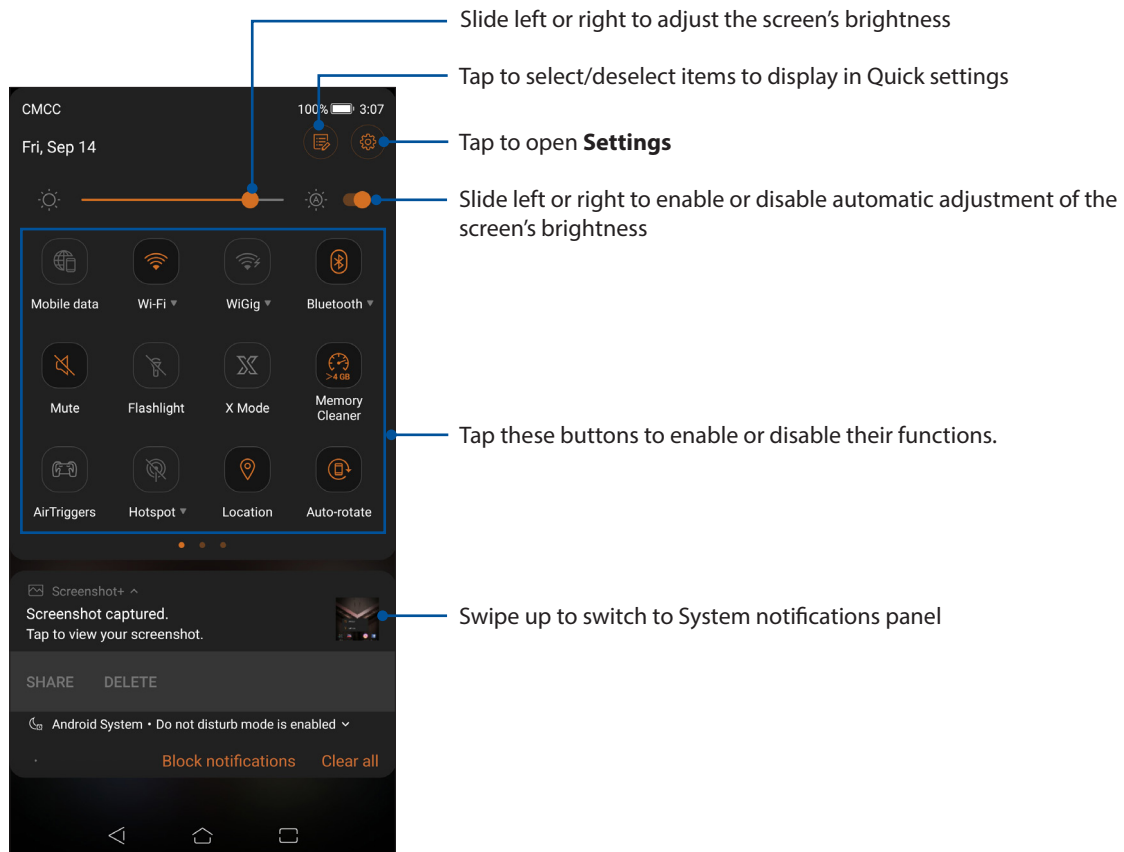


## Quick settings

The Quick settings panel provides a one-tap access to some of the wireless features and settings of your ROG Phone. Each of these features are represented by an icon.



To launch the Quick settings panel, swipe down twice from the top of your screen.

**NOTE:** An orange icon indicates that the feature is currently enabled while a gray icon indicates a disabled feature.



## Adding features

To add features from the Quick Settings panel:

1. Launch Quick settings then tap .
2. Swipe up **Drag to add tiles**.
3. Under **Drag to add tiles**, tap and drag an icon up to add it to the Quick Settings panel.
4. Tap  to go back and view the current Quick Settings panel.

## Removing features

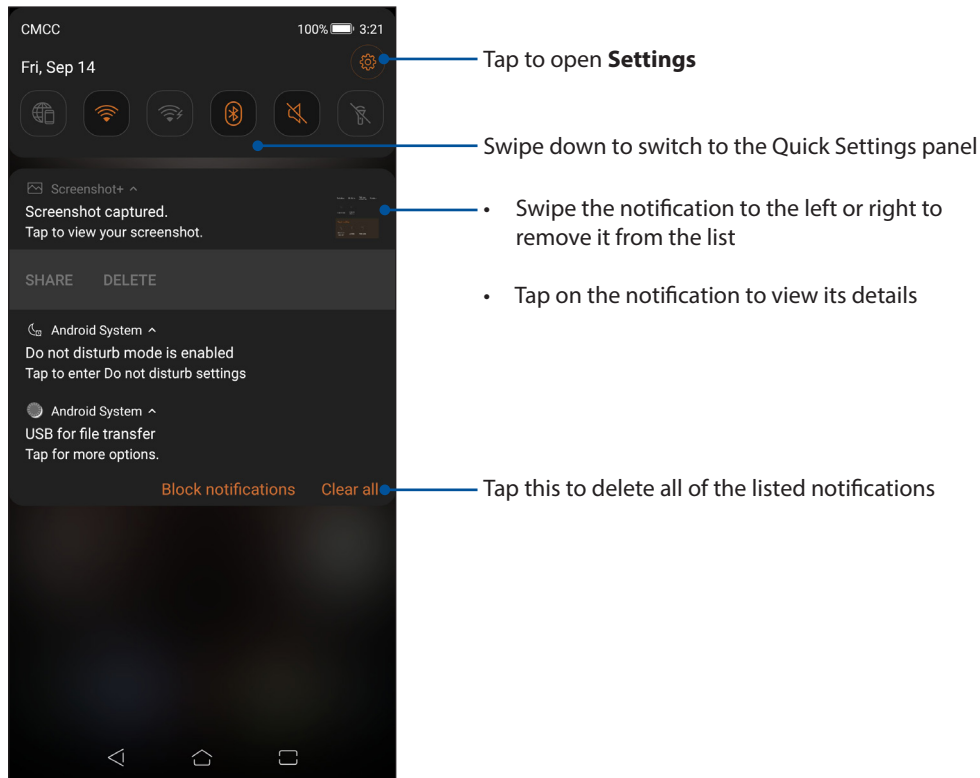
To remove existing features from the Quick Settings panel:

1. Launch Quick settings then tap .
2. Tap and drag an icon below **Drag to add tiles** to remove it from the Quick Settings panel.

## Notifications

From the notifications panel, you can see the latest updates done and system changes made on your ROG Phone. Most of these changes are data and system-related.

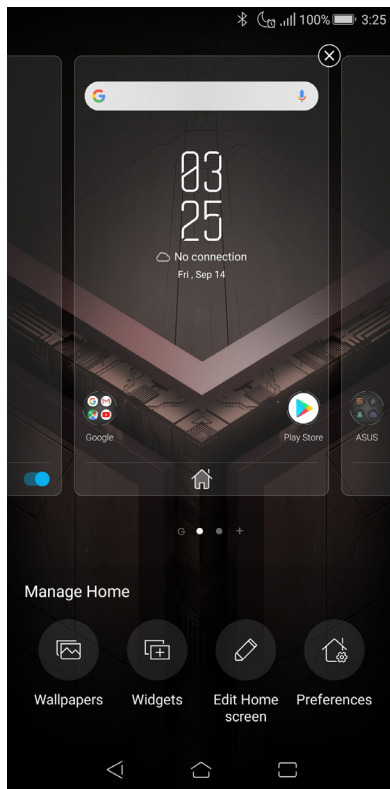
To launch the notifications panel, swipe down from the top of your screen.



## Personalizing your Home screen

Stamp your own personality on your Home screen. Select an attractive design as your wallpaper, and add widgets for a quick review of important info. You can also add more pages so you can add and quickly access or view more apps or widgets on your Home screen.

To launch the Manage Home screen, tap and hold an empty area on your Home screen.



## Widgets

You can put widgets, which are small dynamic apps, on your Home screen. Widgets provide you with quick-views of the weather forecast, calendar events information, battery status, and more.

### Adding widgets

To add a widget:

1. Tap and hold an empty area on your Home screen and select **Widgets**.
2. From the Widgets screen, tap and hold a widget, then drag it to an empty area on your Home screen.

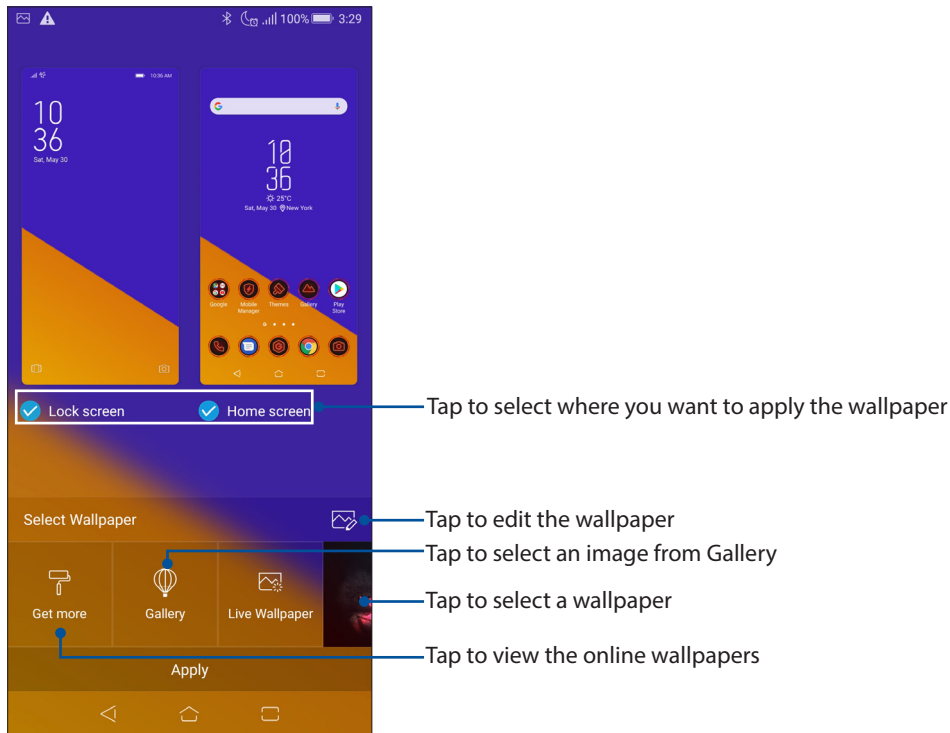
### Removing widgets

From your Home screen, tap and hold a widget, then drag it to **Remove** on top of your screen.



## Wallpapers

Let your apps, icons, and other Zen elements sit on an attractively designed wallpaper. You may add a translucent background tint to your wallpaper for readability and clarity. You can also select an animated wallpaper to make your screen come alive.



## Applying wallpaper

To apply wallpaper:

1. Tap and hold an empty area on your Home screen and select **Wallpapers**.
2. Select to set wallpaper to **Lock screen** or **Home screen**.
3. Select a wallpaper, then tap **Apply**.

## Applying an animated wallpaper

To apply an animated wallpaper:

1. Tap and hold an empty area on your Home screen and select **Wallpapers**.
2. Tap **Live Wallpaper**.
3. Select an animated wallpaper, then tap **Set Wallpaper**.

---

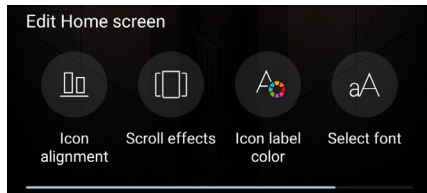
**NOTE:** You can also set up your wallpaper settings from **Settings > Wallpaper**.

---

## Editing your Home screen

You can extend your Home screen, select a scroll effect, change the icon and font, adjust the size and color of the icon and font, and align the icons to the top or bottom of your screen.


1. Tap and hold an empty area on your Home screen and select **Edit Home screen**.
2. Tap a feature to edit your Home screen.



## Setting up the date and time

By default, the date and time displayed on your Home screen automatically syncs with your mobile provider's settings.

To change the date and time settings:

1. Launch the Settings screen by doing any of the following:
  - Launch Quick Settings then tap .
  - Swipe up from the lower part of your Home screen then tap **Settings**.
2. Scroll down the Settings screen and select **System > Date & time**.
3. Slide **Automatic date & time** and **Automatic time zone** to **OFF**.
4. Adjust the date and time.
5. Select the time zone.
6. You can opt to use the 24-hour format, if you prefer.

---


**NOTE:** See also [Clock](#).

---

## Setting up your ringtone and alert sounds

Set up the sound for your phone ringtone, notifications such as text messages, emails, and event alerts. You can also choose to enable or disable the dial pad touch tones, touch sounds, screen lock sound, or you can choose to have your ROG Phone vibrate when you tap on it.

To set up the sound settings:

1. Launch the Settings screen by doing any of the following:
  - Launch Quick Settings then tap .
  - Swipe up from the lower part of your Home screen then tap **Settings**.
2. Select **Sound & Vibration** and set up your preferred sound settings.

## Lock Screen

By default, the lock screen appears after turning on your device and while waking it up from sleep mode. From the lock screen, you can proceed to your device's Android® system by swiping on your touch screen panel.

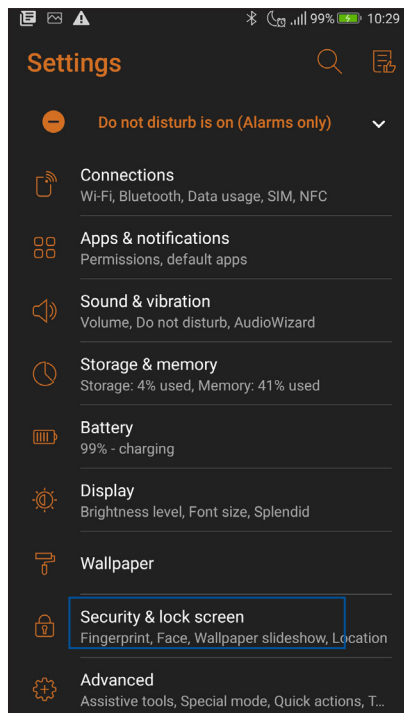
Your device's lock screen can also be customized to regulate access to your mobile data and apps.

### Customizing your lock screen

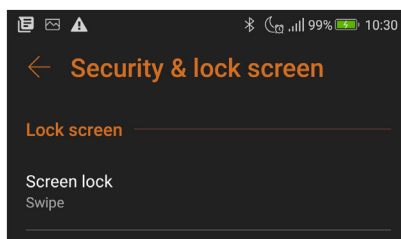
If you want to change your lock screen settings from the default **Swipe** option, refer to the following steps:

1. Launch Quick Settings then tap .

2. Select **Security & lock screen**.



3. In the next screen, tap **Lock screen**.



4. Tap the screen lock option you would like to use.

---

**NOTE:** For more details, see [Securing your ROG Phone](#).

---

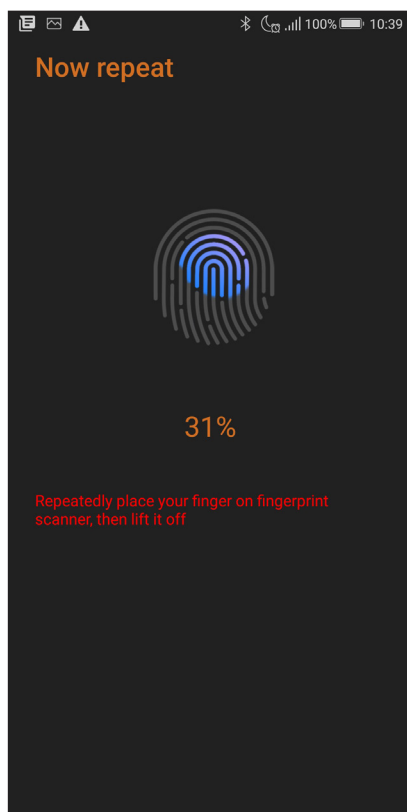
## Fingerprint ID sensor

Fingerprint ID sensor prevents others from using your ROG Phone without your permission. You can use your fingerprint to unlock your device, access your phone calls and data. When you set up your fingerprint ID, you also need to set up your screen lock method for device startup.

### Starting your ROG Phone for the first time

To set up your fingerprint ID when using your ROG Phone for the first time:


1. Ensure that the fingerprint identification module and your finger are clean and dry.
2. From the Welcome page, follow the on-screen instructions to the **Protect your phone** page and tap **Set up fingerprint**.
3. Tap **Next** to choose a screen lock method, and then follow the instructions to the **Locate fingerprint scanner** page, and tap **Next**.
4. Find the fingerprint scanner at the back of your device, adjust your finger and try to cover different areas of your finger repeatedly until your fingerprint is captured.

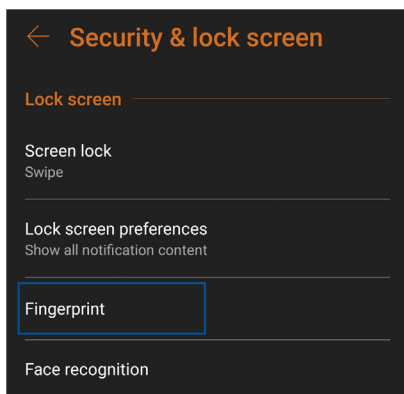


5. Tap **Continue** to complete the setup.

## Setting up fingerprint ID from Settings

To set up your fingerprint ID from **Settings**:

1. Ensure that the fingerprint scanner and your finger are clean and dry.
2. Launch the Settings screen by doing any of the following:
  - Launch Quick Settings then tap .
  - Swipe up from the lower part of your Home screen then tap **Settings**.
3. Scroll down the **Settings** screen and select **Security & lock screen** > **Fingerprint**.



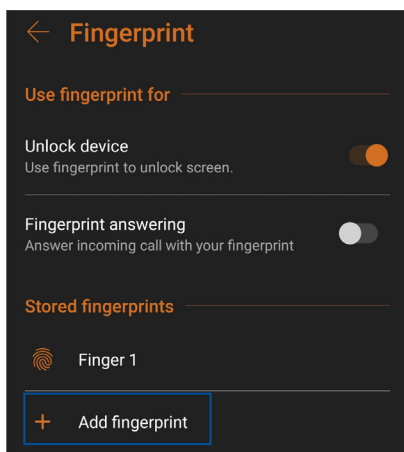
4. Unlock your phone if it's secured. If not, follow the instructions to set up your backup screen lock method.

---

**NOTE:** For more details, see [Securing your ROG Phone](#).

---

5. Tap **Add fingerprint**.




6. Repeatedly place-and-lift your finger on the scanner until your fingerprint is captured.
7. Tap **Done** to complete the setup.

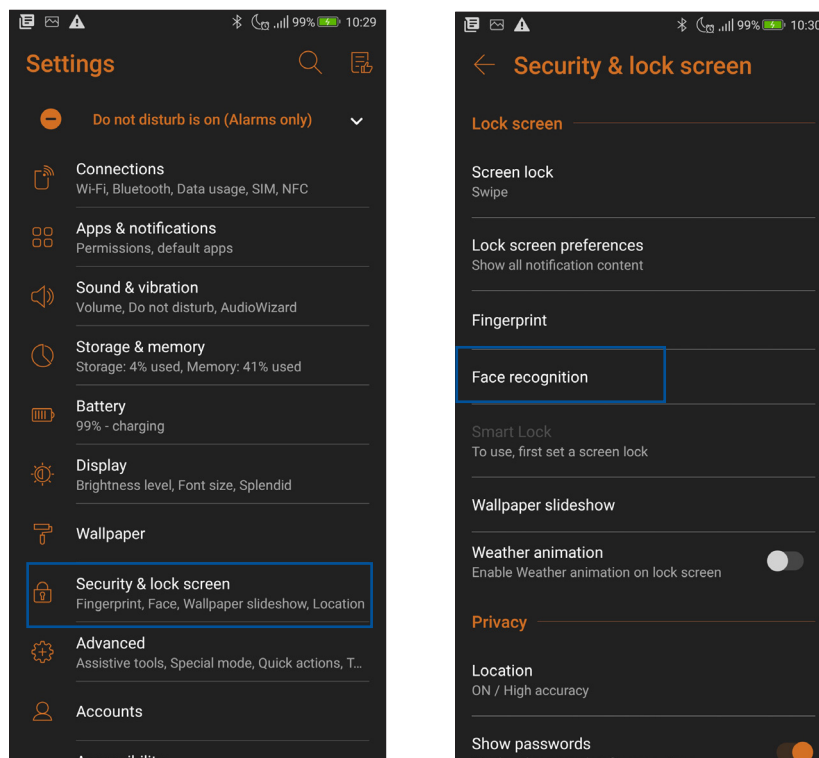
# Face Unlock

Face unlock prevents others from using your ROG Phone without your permission effortlessly. You can light up your ROG Phone's screen and look at it to unlock your device, access your phone's home screen in one second. When you set up your face unlock, you also need to set up your screen lock method for device startup.

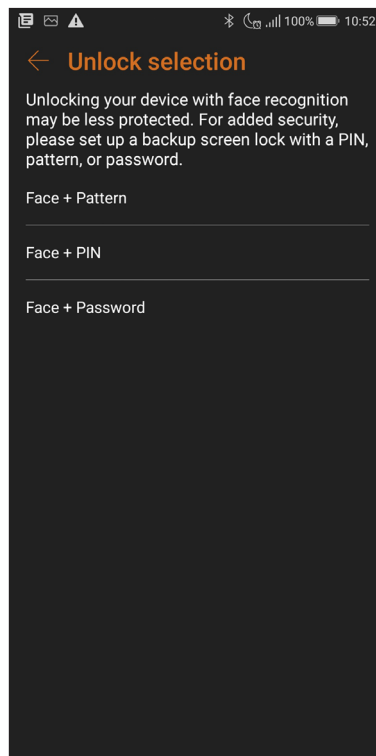
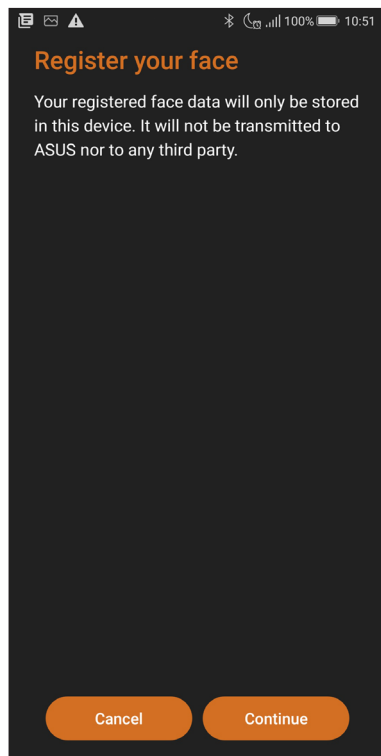
## Setting up face unlock from Settings

To set up face unlock from **Settings**:

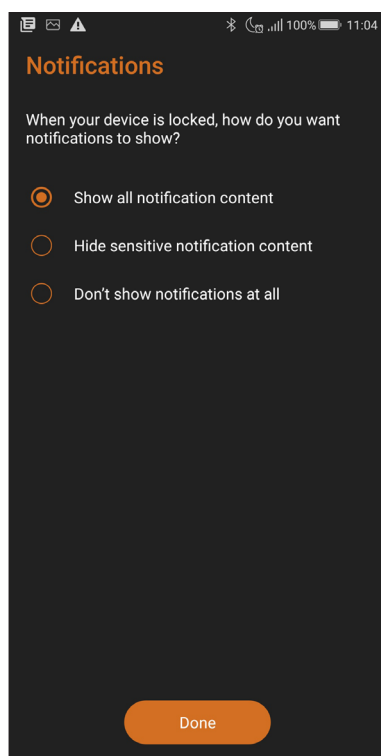
1. Launch the Settings screen by doing any of the following:
  - Launch Quick settings then tap .
  - Swipe up from the lower part of your Home screen and tap **Settings**.
2. Scroll down the Settings screen and select **Security & lock screen > Face recognition**.



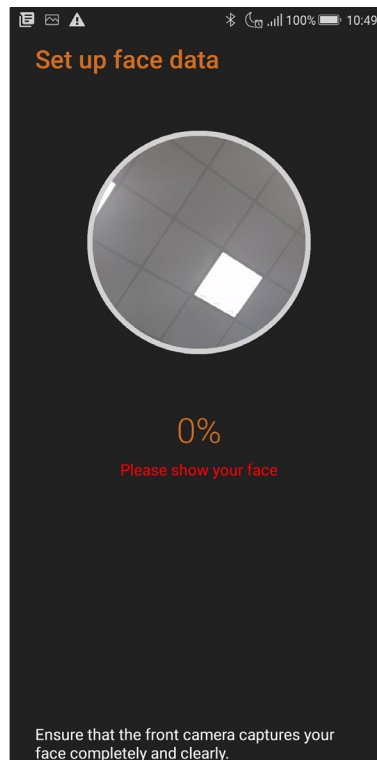
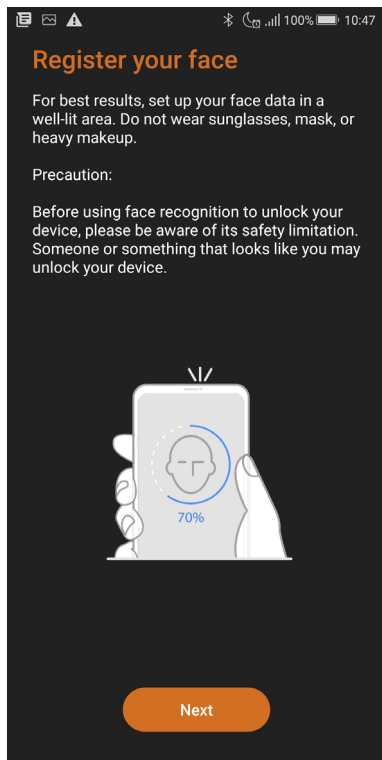
3. Tap **Continue**.
4. Follow the instructions to set up your backup screen lock method.



5. Select how you want to display your notifications on the lock screen, then tap **Done**.



6. Tap **Next** and follow the instructions to register your face.



7. When finished, tap **Done**.

---

**NOTES:**

- Show your mouth, nose and opened eyes while using face unlock feature.
  - Wearing sunglasses or insufficient light will lead to failure of face unlock.
-



## Chrome

Chrome for Android lets you enjoy the same fast, secure and stable web browsing experience as that on the desktop Chrome. Sign in to your Google account to sync tabs, bookmarks, and browsing history across all your devices. If you don't have a [Google account](#), register for one.

---

**NOTE:** For details on creating a Google account, see [Gmail](#).

---

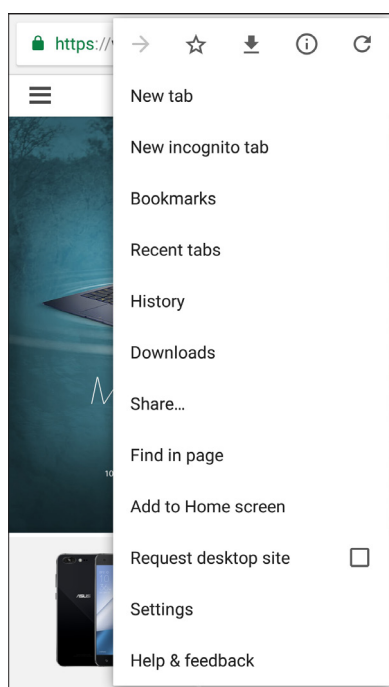
**IMPORTANT!** Before doing any Internet surfing or Internet-related activities, ensure that your ROG Phone is connected to a Wi-Fi or mobile network. For more details, see [Staying connected](#).

---

## Launching Chrome


From your Home screen, do any of the following to launch Chrome:

- Tap **Chrome**.
- Swipe up from the lower part of your Home screen then tap **Google > Chrome**.



## Sharing pages




Share interesting pages from your ROG Phone to others via an email account, cloud storage account, Bluetooth, or other ROG Phone apps.

1. Launch Chrome.
2. From a web page, tap  > **Share...**
3. Tap the account or app that you want to use as medium in sharing the page.

## Bookmarking pages


Bookmark your favorite pages or websites so you can go back and browse them again.

To bookmark a page:

From the page, tap  >  . To view your favorite pages, tap  > **Bookmarks**, then select the page you want to view or access.

## Clearing the browsing data

Clear the browsing data that are temporarily stored in your ROG Phone to improve the loading performance of your Chrome browser. The browsing data includes browsing history, cache, cookies/site data, saved passwords, and autofill data.

1. Launch the browser.
2. Tap  > **Settings** > **Privacy** > **Clear browsing data**.
3. Select the browsing data that you want to delete.
4. When done, tap **CLEAR DATA**.

## Gmail

Use Gmail to set up your Google account to get into Google-related services and apps as well as receive, send, and browse emails right from your ROG Phone. You can also set up other email accounts such as Yahoo or your work email account via Gmail.

---

**IMPORTANT!** Your ROG Phone must be connected to a Wi-Fi or mobile network so you can add an email account or send and receive emails from added accounts. For more details, see [Staying connected](#).

---

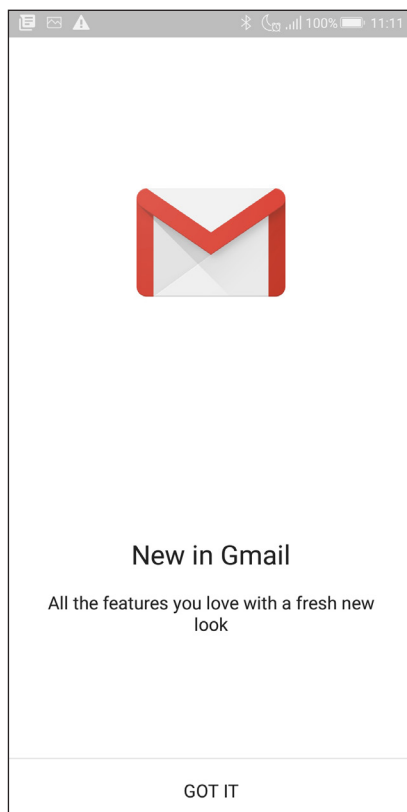
To set up your Google account:

1. From your Home screen, do any of the following to launch Gmail:
  - Tap **Google > Gmail**.
  - Swipe up from the lower part of your Home screen then tap **Google > Gmail**.
2. Tap **Add an email address**.
3. Select **Google**.
4. Enter your email address. To create a new Google account, tap **More options > Create account**.
5. Follow the next steps to sign in to your Google account.

---

**NOTE:** If you want to set up your work account on your ROG Phone, ask for the email settings from your network administrator.

---







# Google Calendar

Bring your schedule to life and keep track of all your important events or reminders. Events that you create or edit will automatically sync with all Google Calendar versions that you've logged into.



## Creating events

To create an event:

1. From the Home screen, tap **Google > Calendar**.
2. Tap  then tap **Event**.
3. Enter your event name, and select the date and time for the event. You may set the event as an all-day or recurring event.
  - All-day event: From the **All-day** field, move the slider to the right.
  - Recurring event: Tap **More options** > , then select how often you want the event to recur or repeat.
4. To set the time zone, tap **More options** > , then enter the country whose time zone you want displayed.
5. From the **Add location** field, enter the venue or location of the event.
6. Tap , then you may select or set the time or day to get a notification or reminder about the event.
7. From the **Invite people** field, enter the email addresses of your guests to the event.
8. You may also add note or attachment from the **Add note** or **Add attachment** field.
9. Once finished, tap **SAVE**.



## Editing or removing events

To edit or remove an event:

1. From the Home screen, tap **Google > Calendar**.
2. Tap the event that you want to edit or delete.
3. To edit the event, tap  and make the necessary changes. To remove the event, tap  > **Delete**, then tap **DELETE** to confirm the deletion.



## Creating reminders

To create a reminder:

1. From the Home screen, **Google > Calendar**.
2. Tap  then tap **Reminder**.
3. Enter your reminder name and tap **DONE**.
4. Set the date and time for the reminder. You may set the reminder as an all-day or recurring reminder.
  - All-day reminder: From the **All day** field, move the slider to the right.
  - Recurring reminder: Tap , then select how often you want the reminder to recur or repeat.
5. Once finished, tap **SAVE**.

## Editing or removing reminders

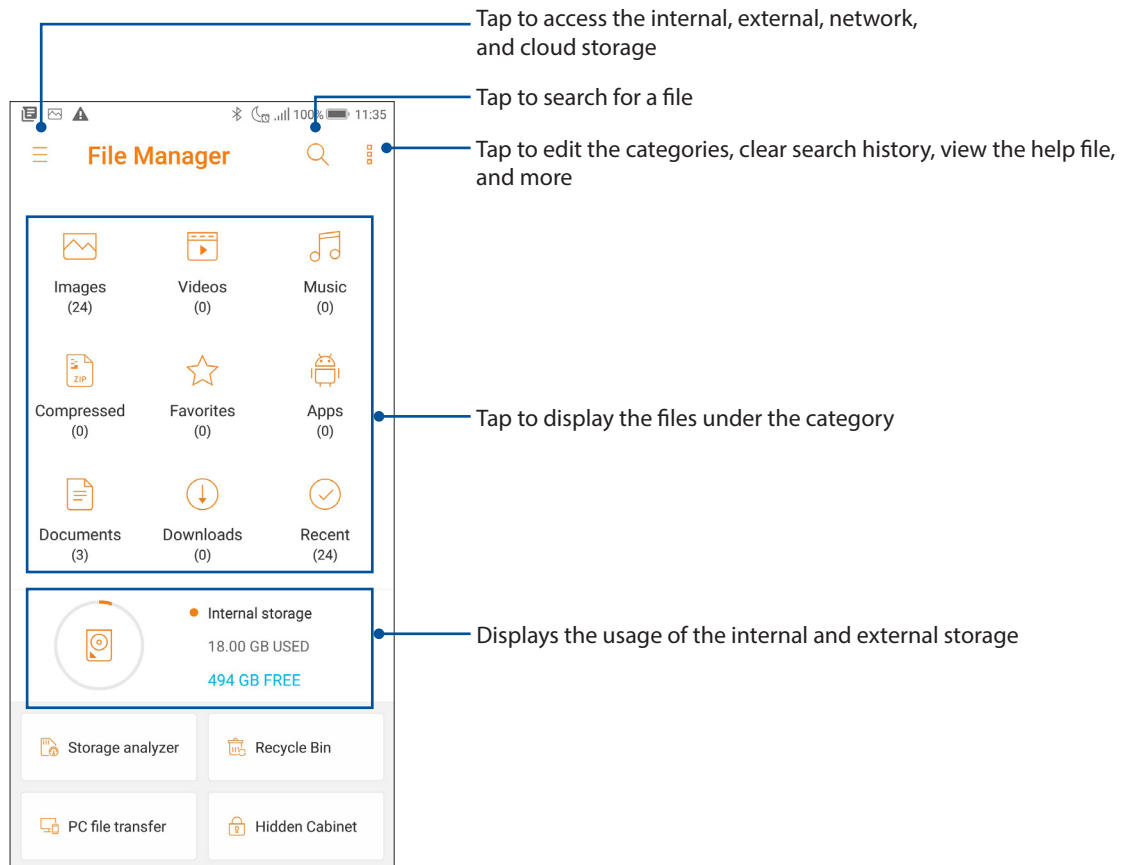
To edit or remove a reminder:

1. Tap **Google > Calendar**.
2. Tap the reminder that you want to edit or delete.
3. To edit the reminder, tap  and make the necessary changes. To remove the reminder, tap  > **Delete**, then tap **DELETE** to confirm the deletion.

## File Manager

Using File Manager allows you to easily locate and manage your data on the internal storage of your ROG Phone and its connected external storage devices.

To launch File Manager, swipe up from the lower part of your Home screen then tap **File Manager**.



**IMPORTANT!** Before accessing files saved on the network and cloud storage, ensure that Wi-Fi or mobile network is enabled on your ROG Phone. For details, see [Staying connected](#).

## The Cloud

Back up your data, sync files among different devices, and share files securely and privately via a Cloud account such as ASUS WebStorage, Drive, OneDrive, and Dropbox.

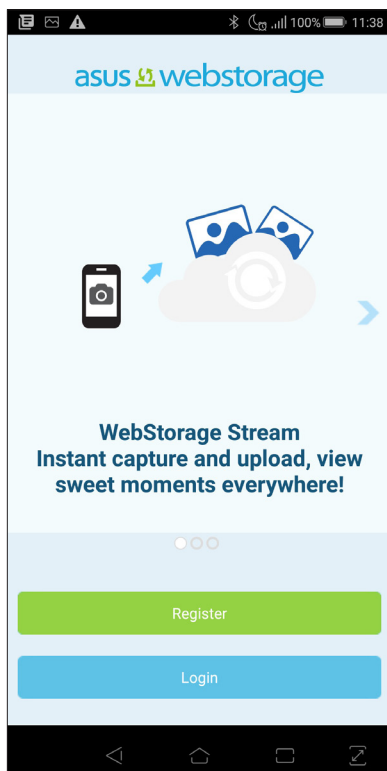
### ASUS WebStorage

Register for or sign in to ASUS WebStorage and get free cloud storage. Automatically upload newly captured photos for instant sharing, sync files among different devices, or share files via your ASUS WebStorage account.

---

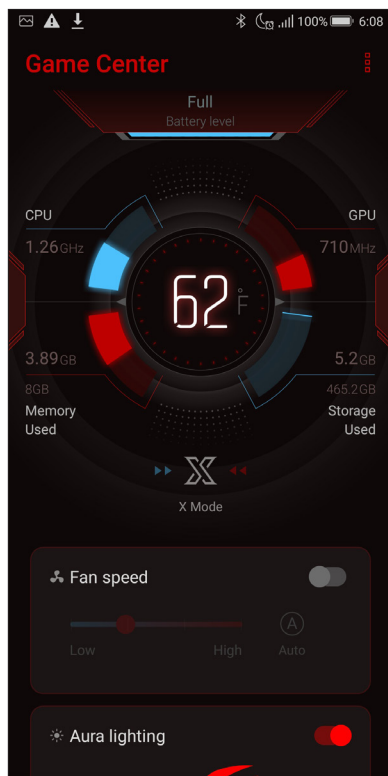
**IMPORTANT!** Ensure that Wi-Fi or mobile network is enabled on your ROG Phone. For details, see [Staying connected](#).

---



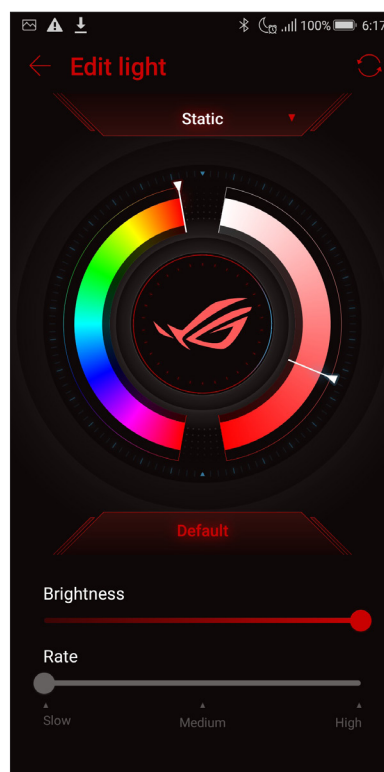
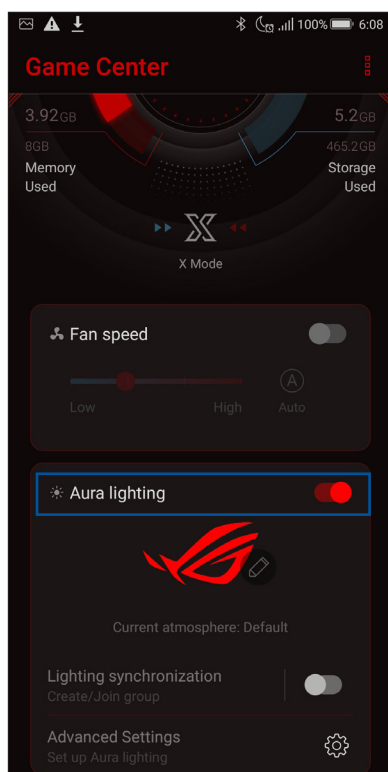
## Game Center

Game Center displays the information of CPU, GPU, used memory and storage, allows you to adjust the fan speed, enable or disable Aura lighting and configure game settings.



## Aura lighting

Slide Aura lighting to ON and tap  to configure the light effect.

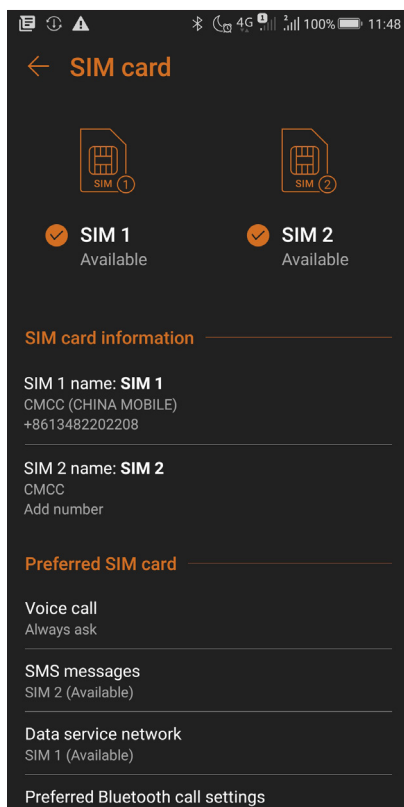




## Call in style

### Dual SIM feature

The dual SIM feature of your ROG Phone lets you manage the settings of the installed Nano SIM cards. With this feature, you can enable/disable Nano SIM cards, assign SIM names, or set one as a preferred network.



### Renaming your Nano SIM cards

Change the names of your Nano SIM cards on your ROG Phone so that you can identify them easily.

To change the names of your Nano SIM cards, tap **SIM 1 name: SIM 1** or **SIM 2 name: SIM 2** then key in the names for your Nano SIM cards.

**NOTE:** If your SIMs have different mobile service providers, we recommend you to use the names of these providers for your SIM names. If both SIMs have the same mobile service provider, we recommend you to use the mobile numbers for your SIM names.

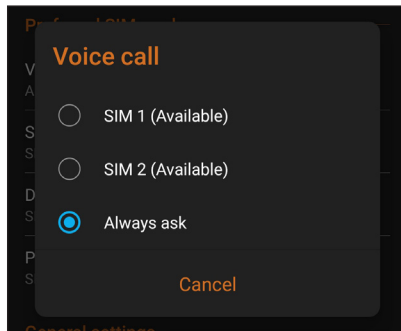
## Assigning a preferred SIM card

Assign a SIM card as your preferred SIM for voice calls, SMS messages, and data services.

### SIM card for voice calls

When you make a call, your ROG Phone automatically uses the preferred SIM card to connect the call.

To assign a SIM card for voice calls, tap **Voice call** then tap the SIM that you want to use.



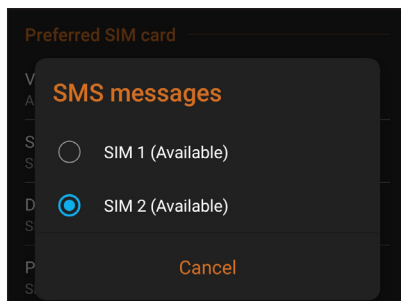
---

**IMPORTANT!** You can only use this feature if you make a call from your contacts list.

---

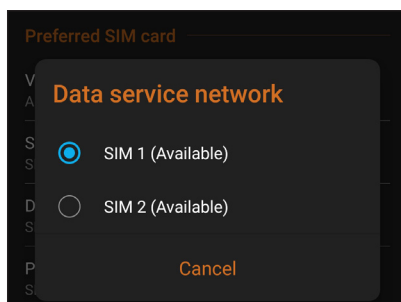
### SIM card for SMS messages

To assign a SIM card for SMS messages, tap **SMS messages** then select from **SIM 1** or **SIM 2**.



### SIM card for data service

To assign a SIM card for data service, tap **Data service network** then select from **SIM 1** or **SIM 2**.



## Making calls

Your ROG Phone offers you many ways to make a call. Call your friends from your contacts list, smart dial to quickly place a call, or enter a speed-dial number to call your frequently-called contact.


---

**NOTE:** Organize your contacts in the Contacts app. For details, see [Managing contacts](#).

---

## Launching the Phone app

From your Home screen, do any of the following to launch the Phone app:

- Tap .
- Swipe up from the lower part of your Home screen then tap **Phone**.

## Dialing a phone number

Use the Phone app to directly dial a phone number.

1. From your Home screen, tap **Phone** then tap the number keys.
2. Select from call buttons **SIM 1** or **SIM 2** to dial the number.

---

**NOTE:** The labels of the call buttons may vary depending on the setting that you made to your SIM cards. For more details, see [Dual SIM feature](#).


---

## Dialing an extension number

When you need to call an extension number, you can do any of these steps to skip the voice prompts.

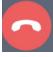
### Prompting for confirmation of an extension number

You can insert a confirmation prompt for the extension number after dialing the main number.

1. From the Phone app, enter the main number.
2. To insert a confirmation prompt, tap and hold # until a semi-colon (;) appears.
3. Select from call buttons **SIM 1** or **SIM 2** to make the call.
4. When prompted, tap **Yes** to confirm the extension number.
5. Tap  to end the call.

## Auto-dialing an extension number

You can insert a short or long pause after dialing the main number, then the extension number is dialed automatically.

1. From the Phone app, enter the main number.
2. To insert a pause, tap and hold \* until a comma (,) appears.
3. Enter the extension number.
4. Select from call buttons **SIM 1** or **SIM 2** to place the call.
5. Tap  to end the call.

## Smart dialing your contacts

As you enter the first few numbers or letters of your contact's name, Smart Dial filters through your contacts list or call logs and provide you with possible matches. You can check if the contact you're trying to reach is on the list of possible matches, then you can quickly place that call.

1. Launch the Phone app then enter the number or name of the contact in the Search field.
2. From the list of possible matches, tap the contact you wish to call. If the contact is not on list, enter the complete number or name of the contact.
3. Select from call buttons **SIM 1** or **SIM 2** to make the call.


---

**NOTE:** The labels of the call buttons may vary depending on the setting that you made to your SIM cards. For more details, see also [Dual SIM feature](#).

---

## Calling from Contacts app

Use the Contacts app to make a call from your contacts list.

1. Launch the Contacts app.
2. Tap the contact name then tap the number that you wish to dial.
3. If there are two SIM cards installed, tap the SIM card from which you want to make the call.
4. Tap  to end the call.


---

**NOTE:** To view all contacts from all contact accounts, tap **Contacts to display** dropdown list then tick all accounts.

---

## Calling your favorite contacts

When you add a contact to your Favorites list, you can quickly call the contact from the Phone app.




1. Launch the Contacts app.
2. Tap **Groups** > **Favorites** to display your Favorites list, then tap your favorite contact whom you want to call.
3. Tap  to end the call.

## Receiving calls

The touch screen of your ROG Phone lights up when there is an incoming call. The display of the incoming call also varies, depending on the status of your ROG Phone.

## Answering calls

There are two ways to answer a call depending on the status of your ROG Phone:


- If your device is active, tap **Answer** or to reject a call, tap **Dismiss**.
- If your device is locked, drag  to  to answer or to  to reject the call.


## Managing your call logs

From your call logs, you can call back your missed calls, save calls to your contacts list, or redial your recently-called number or contact.

## Saving calls to Contacts


You can add a call/number from your call logs to your contacts list.

1. From the Phone app, tap **Recents** to display your call logs.
2. Tap > beside the number that you want to add to your contacts list.
3. Tap  beside the number.
4. Tap **Create new contact** to add a new entry to your contacts list.

Tap **Add to an existing contact**, select a contact, choose whether to overwrite the contact's number with this new one or add a new entry, then tap .

## Redialing your last-called number

To redial your last-called number:

1. From the Phone app, tap **Recents** to display your call logs.
2. Tap the call button to display your last-called number, then tap the call button again to redial the number.
3. Tap  to end the call.

## Other call options

During an active call, tap any of the possible call options for when a call is in progress.



### Microphone

Turns the microphone for the active call on or off. When the microphone is off or in mute mode, you can hear the caller but the caller can't hear you.



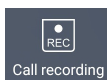
### Speakerphone

Turns the speakerphone on or off.



### Call on hold

Puts an active call on hold.



### Record

Records an active call.

**IMPORTANT!** Before recording an active call, it is dictated by most local laws to ask permission from the other person or persons on the other line.

**NOTE:** For more details, refer to the section [Recording calls](#).


## Answering another call

While you are talking on your ROG Phone, you can hear a beeping sound, indicating of another incoming call. Tap **Answer** on the touch screen to receive an incoming call while on an active call.

## Recording calls

Your ROG Phone allows you to record a conversation for future reference or information.

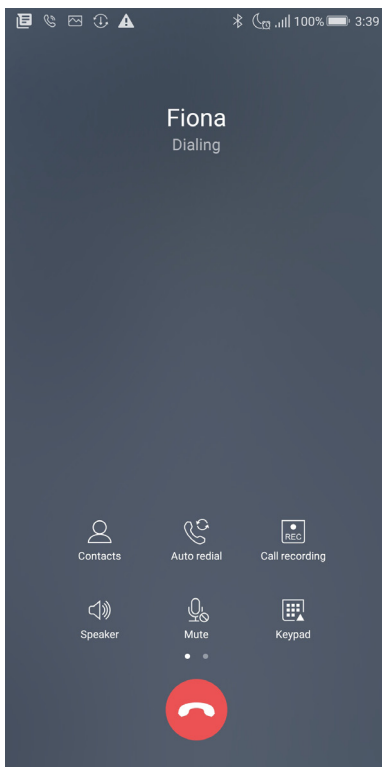
1. Call a contact or dial a number.

2. Tap  to record the call.

---

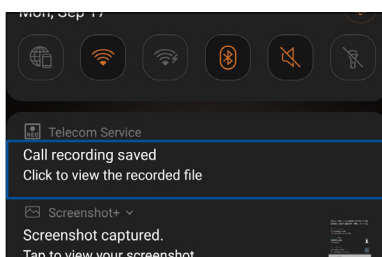
**IMPORTANT!** Before recording a call, ensure that you ask for permission from the other party or parties.

---



3. To stop recording, tap . This  icon appears on the system notification bar.

4. Swipe down from the top of the screen, then tap **Call recording saved** notification to view the recorded conversation.




## Managing contacts

Organize your contacts and easily stay in touch with them via calls, SMS messages, emails, or social networks. Group your contacts as Favorites to quickly get in touch with them, or group them as VIPs to get notified about any upcoming events, missed calls, or unread messages.

You can also sync your contacts with your email or social network accounts, link contacts' info for easy access in one place, or filter the contacts you want to keep in touch with.

To launch the Contacts app, swipe up from the lower part of your Home screen then tap **ASUS > Contacts**.

## Contacts Settings

Select how you would want to display your contacts from the Contacts settings. Such display options include displaying only those contacts with phones, sorting list by first/last name, or viewing contact names as first/last names first. To set up your Contacts settings, tap  > **Settings** from the Contacts app.

## Setting up your profile


Make your ROG Phone truly your own and set up your profile info.

1. Launch the Contacts app then tap **Set up my profile** or **ME**.

---

**NOTE:** ME appears when you've set up your Google account on your ROG Phone.

---

2. Fill in your info such as mobile or home number. To add other info, tap **Add another field**.
3. When you've completed your info, tap .



## Adding contacts

Add contacts to your device, corporate, Google, or other email accounts and fill in more important contact information such as contact numbers, email addresses, special events for VIPs, and more.

1. Launch the Contacts app then tap **+**.
2. Select **Device**.

---

### NOTES:

- You can also save the contact to your SIM card or an email account.
  - If you don't have an email account, tap **Add account** then create one.
- 

3. Fill in the necessary information such as mobile or home number, email address, or group where you want to put the contact in.
4. After filling in the information and you want to add more contact numbers or email addresses, tap **Add new**.
5. If you want to add other contact information, tap **Add another field**.
6. When you've completed the info, tap **✓**.

## Adding an extension number to a contact number

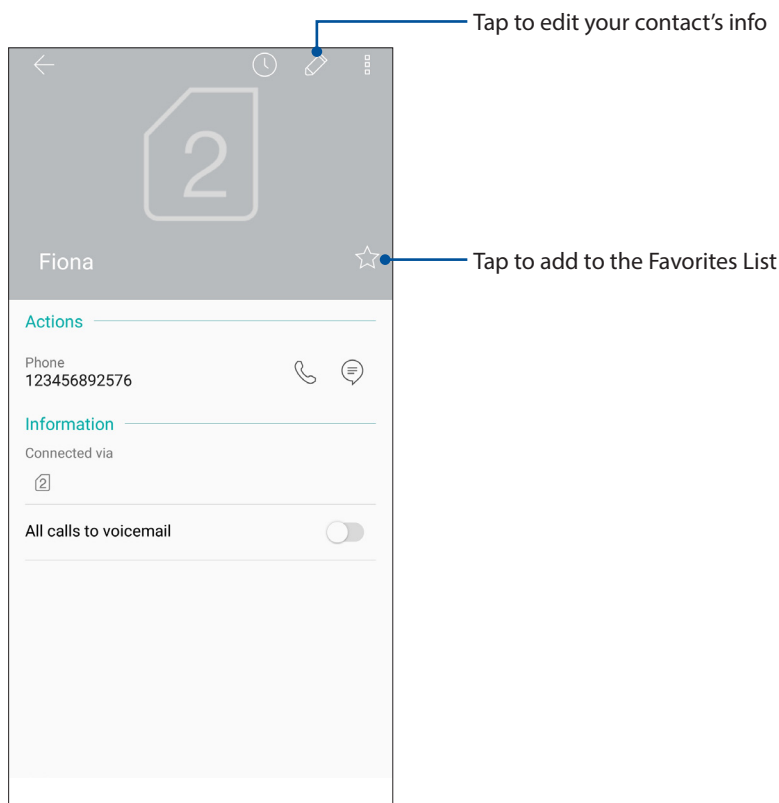
You can add a contact's extension number to skip the voice prompts when making a call.

1. In the contact's information screen, enter the contact's main number and extension number in either of these two ways:
  - Insert a comma (,) after the main number, then enter the contact's extension number. There'll be a short pause before the extension number is dialed automatically. To extend the pause, tap **Pause** to insert another comma.
  - Insert a semi-colon (;) after the main number, then enter the contact's extension number. When dialing the contact number, you'll be prompted to confirm the extension number. Tap **Yes** on the confirmation message.
2. When you've completed the info, tap **✓**.

## Customizing your contact's profile


Edit your contact's info, add a photo, set a ringtone, or take a photo as a cover for your contact's profile.

1. Launch the Contacts app then select the contact whose info or profile you want to edit or customize.
2. Make the changes from the contact's profile page.



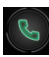
## Marking your favorite contacts

Set your frequently-called contacts as your favorites to be able to call them quickly from the Phone app.

1. Swipe up from the lower part of your Home screen then tap **ASUS > Contacts**.
2. Select the contact that you want to mark as a favorite.
3. Tap . The contact is added to your Favorites List in the Phone app.

---




### NOTES:

- To view your Favorites list, tap  from the Home screen, then tap **Groups > Favorites**.
  - For more details, refer to the section [Calling your favorite contacts](#).
-

## Managing your block list


### Blocking contacts or numbers

Create your list of blocked contacts or numbers to avoid receiving any unwanted calls or messages. Your blocked calls and messages will be saved to the Block List archive.

1. Swipe up from the lower part of your Home screen then tap **ASUS > Contacts** then tap  > **Settings > Call blocking & block list > Block list**.
2. Tap , then do any of the following:
  - To block a contact, tap **Choose from contacts**, then select the contact you want to block from your contacts list.
  - To block a number from the recent call logs, tap **Choose from recent call logs**, then select the contact you want to block from your contacts list.
  - To block a number, tap **Enter a number** then enter the number that you want to block.
  - To block a SIP number, tap **Enter a SIP number** then enter the number that you want to block.
3. When done, tap .

### Unblocking contacts or numbers

You may remove a blocked contact or number from your list and receive calls or messages from the contact or number again.

1. Swipe up from the lower part of your Home screen then tap **ASUS > Contacts** then tap  > **Settings > Call blocking & block list > Block list**.
2. Tap the contact or number that you want to unblock then tap **Remove from block list**.

### Social networking with your contacts

Integrating the social network accounts of your contacts makes it easier for you to view their profiles, news, and social feeds. Stay updated with the activities of your contacts in real time.


---

**IMPORTANT!** Before you can integrate social network accounts of your contacts, you need to log in to your social network account and sync its settings.

---

## Syncing your social network account

Sync your social network account to add the social network accounts of your contacts to your ROG Phone.


1. Do any of the following to launch the Settings app:
  - Launch Quick Settings then tap .
  - Swipe up from the lower part of your Home screen then tap **Settings**.
2. From the Settings screen, tap your social network account under **Accounts** section.
3. Slide **Automatically sync data** to **ON** to sync the social network accounts of your contacts.
4. Launch the Contacts app to view your contacts list. Tap the contact, you will see which social network the contact is from.

## Send messages and more

### Google Messenger

Google Messenger, an intuitive and delightful app, lets you send/receive SMS/MMS messages, as well as send group texts, photos, or audio messages. You can add emojis or stickers to your messages, share your location, archive your messages, and easily block SMS senders. You can also take photos or record videos and easily share these files.

### Sending messages

1. Swipe up from the lower part of your Home screen then tap **Messenger**.
2. Tap , then select the contact whom you want to send a message to.
3. Start composing your message in the message field.
4. When you're done, select the SIM account where you're going to send your message from.

### Replying to messages

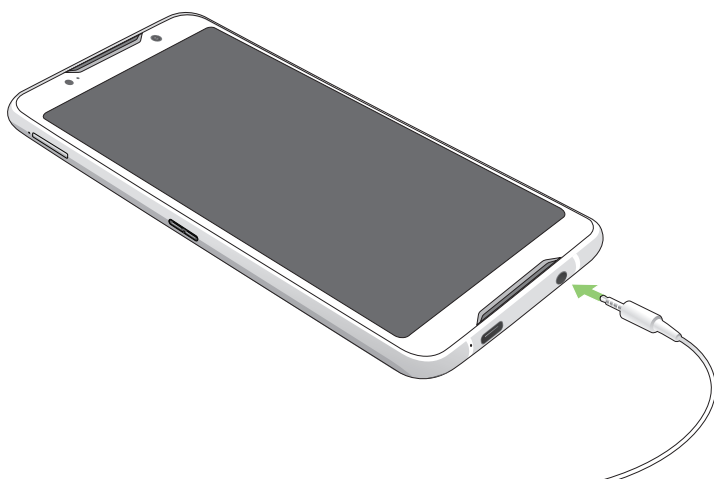
1. Tap your message alert from your Home screen or Lock screen.
2. Start composing your reply in the message field.
3. When you're done, select the SIM account where you're going to send your reply from.

## Using a headset

Have the freedom to do other things while you're in a call or enjoy listening to your favorite music, using a headset.

### Connecting the audio jack

Insert the 3.5mm headset jack into the audio port of your device.



---

#### **WARNING!**

- Do not insert other objects into the audio jack port.
- Do not insert a cable with electric power output into the audio jack port.
- Listening at a high volume for long periods can damage your hearing.

---

#### **NOTES:**

- We highly recommend to use only compatible headsets or the bundled headset with this device.
  - Unplugging the audio jack while listening to music, automatically pauses the music played.
  - Unplugging the audio jack while watching a video, automatically pauses the video playback.
-


## Google Play Music

With Google Play Music, you can stream your favorite music, create playlists, or listen to the radio. You can also store up to 50,000 music files to the cloud for free. You can also subscribe to Google Play Music for unlimited and ad-free access to millions of music files that you can add to your own music library.

### Setting up your Google Play Music

Sign in to your Google or Gmail account to be able to use Google Play Music. Once you've signed in to your account, all music files on your ROG Phone, including the uploaded or purchased ones from Google Play, are added to your library.

To set up your Google Play Music:

1. From the Home screen, **Google > Play Music**.
2. Tap  then tap **Settings > Tap to choose account**.
3. Enter your account, then tap **ADD ACCOUNT**.
4. Follow the next instructions to sign in to your account.

---

#### NOTES:

- Google Play Music subscription is only available in some countries or region.
  - For more details on using Google Play Music, visit <https://support.google.com>
-

# *Your precious moments*

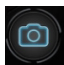
# 6

## Capture moments

### Launching the Camera app

Capture images and record videos using your ROG Phone's Camera app. Refer to any of the steps below to open the Camera app.

#### From the home screen

Tap .

#### Using the volume key

While your ROG Phone is on sleep mode, double-click the volume key to wake it up and immediately launch the Camera app.

---

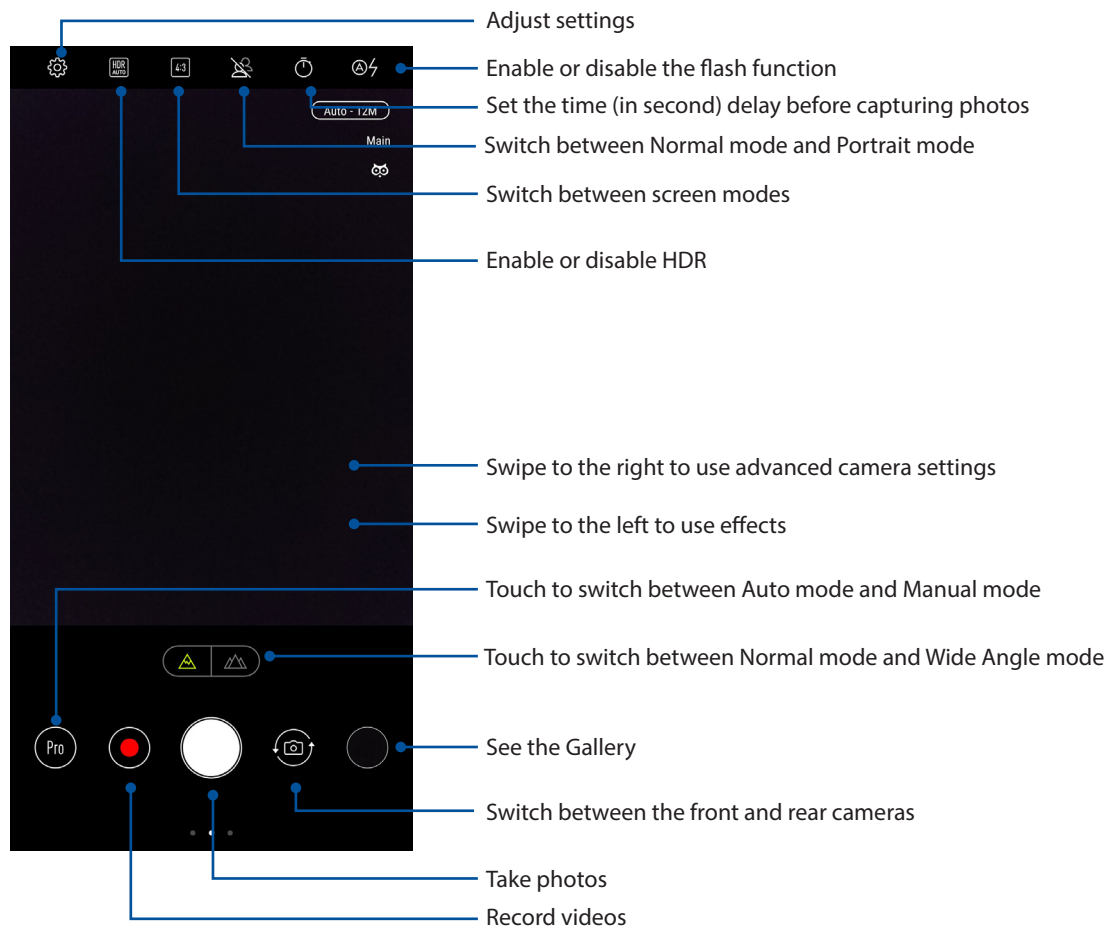
**NOTE:** Before using the volume key to launch the Camera app, enable this function from **Settings > Advanced**, then slide **Instant camera** to **ON**.

---

## Camera home screen


Your ROG Phone's camera is equipped with auto-scene detection and auto-image stabilizer features. It also features a video stabilization function that helps prevent shakiness while video recording.

Tap the icons to start using your camera and explore the image and video features of your ROG Phone.



## Photo Locations

To enable the location tagging feature, refer to the following steps:

1. Turn on the location access from **Settings > Security & lock screen > Location > App-level permissions**.
2. Ensure that you have shared your location to Google Map.
3. From the Camera app's home screen, tap  and activate **Location services** before you take the photo.



## Advanced camera features

Explore new ways of capturing images or videos and make captured moments extra special using the advanced camera features of your ROG Phone.

---



**IMPORTANT!** Apply the settings first before taking images. Available features may vary per model.

---


### Beauty

Have fun during and after taking photos of your family and friends using the Beauty feature of your ROG Phone. When enabled, this feature allows you to make live beauty enhancements on your subject's face before you press the shutter button.

#### Capturing Beauty photos


1. From the Camera app's home screen, swipe to the right then tap **Beauty**.
2. Tap  to adjust the Beautification settings to apply to the photo.
3. Tap  to start capturing the photo.

---

**NOTE:** Drag  towards the center of the screen to set a countdown timer.

---


#### Applying Beautification to photos

1. Tap the thumbnail to select the photo.
2. Tap the photo and tap **Edit** >  to select your preferred Beautification feature, then tap **Save** to save the photo.

### GIF animation

Create GIF (Graphics Interchange Format) images straight from your ROG Phone's camera using the GIF animation feature.

#### Capturing GIF animation photos

1. From the Camera app's home screen, swipe to the right then tap **GIF Animation**.
2. Long press the shutter button to start capturing burst photo for GIF animation.
3. Make your preferred adjustments to the GIF animation settings.
4. Tap  when finished.

## Panorama

Capture images from various angles using Panorama. Images captured from a wide angle perspective are automatically stitched together using this feature.

### Capturing panoramic photos

1. From the Camera app's home screen, swipe to the right then tap **Panorama**.
2. Tap the shutter button then pan your ROG Phone horizontally (to the left or right) or vertically (upward or downward) to capture the scenery.

---

**NOTE:** While panning your ROG Phone, a timeline of thumbnails appears on the lower part of your screen as it captures the scenery.


---

3. Tap  when finished.

## Slow motion

The slow motion video feature allows you to record videos for slow-motion playback.


### Recording slow motion videos

1. From the Camera app's home screen, swipe to the right then tap **Slow motion**.
2. Tap  to start taking Slow motion videos.

## Time lapse

The time lapse video feature of your ROG Phone allows you to capture stills for automatic time lapse playback. In effect, events seem to move in a fast-forward manner though they actually occurred and were recorded between long intervals.

### Recording Time lapse videos

1. From the Camera app's home screen, swipe to the right then tap **Time lapse**.
2. Tap  then select the time lapse interval.
3. Tap the shutter button to start taking Time lapse videos.

## Using the Gallery

View images and play videos on your ROG Phone using the Gallery app.

This app also allows you to edit, share, or delete image and video files stored in your ROG Phone. From Gallery, you can display images in a slideshow or tap to view the selected image or video file.

To launch Gallery, Swipe up from the lower part of your Home screen then tap **ASUS > Gallery**.


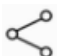
### Viewing the photo location

Enable the location access on your ROG Phone, and get the location details on your photos. Your photos' location details include the area where the photos are taken, as well a map of the location via Google Map or Baidu (in China only).



To view the details of a photo:

1. Turn on the location access from **Settings > Security & lock screen > Location > App-level permissions**.
2. Ensure that you have shared your location to Google Map or Baidu.
3. Launch the Gallery app, and select the photo whose photo details you want to view.
4. Tap the photo then tap **Details**.

### Sharing files from the Gallery

1. From the Gallery screen, tap the folder where the files you want to share are located.
2. After opening the folder, tap  > **Select** to activate file selection.
3. Tap the files you want to share. A check mark appears on top of the image you select.
4. Tap  then select from the list where you want to share the images.

### Deleting files from the Gallery

1. From the Gallery screen, tap the folder where the files you want to delete are located.
2. After opening the folder, tap  > **Select** to activate file selection.
3. Tap the files you want to delete. A check mark appears on top of the image you select.
4. Tap .

## Editing images

The Gallery also features its own image editing tools that you can use to enhance images saved on your ROG Phone.

1. From the Gallery screen, tap the folder where the files are located.
2. After opening the folder, tap the image you want to edit.
3. Once the image is opened, tap it again to show its functions.
4. Tap **Edit** to open the image editing toolbar.
5. Tap any of the icons on the editing toolbar to apply changes to the image.


# Staying connected

# 7

## Mobile network

When there's no available Wi-Fi network that you can connect to, you can enable your mobile network's data access for Internet connection.

### Enabling the mobile network

1. Do any of the following to launch the Settings screen:
  - Launch Quick Settings then tap .
  - Swipe up from the lower part of your Home screen then tap **Settings**.
2. Tap **Connections** > **Mobile network**.
3. Slide **Data enabled** to **ON**, and configure the other mobile network settings, if necessary.

---


#### NOTES:

- If you access the Internet via your mobile network, additional charges will be incurred depending on your data plan.
  - For more details on your mobile network charges/fees and settings, contact your mobile service provider.
- 

## Wi-Fi

The Wi-Fi technology of your ROG Phone gets you connected to the wireless world. Update your social media accounts, browse the Internet, or exchange data and messages wirelessly from your ROG Phone.

### Enabling Wi-Fi

1. Launch the Settings screen by doing any of the following:
  - Launch Quick Settings then tap  > **Connections**.
  - Swipe up from the lower part of your Home screen then tap **Settings** > **Connections**.
2. Slide the Wi-Fi switch to the right to turn on the Wi-Fi.

---

**NOTE:** You can also enable the Wi-Fi from Quick Settings screen. Refer to section [Quick Settings](#) on how to launch Quick Settings screen.

---

## Connecting to a Wi-Fi network

1. On the Settings screen, tap **Wi-Fi** to display all detected Wi-Fi networks.
2. Tap a network name to connect to it. For a secured network, you may be prompted to key in a password or other security credentials.


---

### NOTES:

- Your ROG Phone automatically reconnects to the network that you connected with previously.
  - Turn off the Wi-Fi feature when you're not using it to help save battery power.
- 

## Disabling Wi-Fi

To disable Wi-Fi:

1. Launch the Settings screen by doing any of the following:
  - Launch Quick Settings then tap  > **Connections**.
  - Swipe up from the lower part of your Home screen then tap **Settings** > **Connections**.
2. Slide the Wi-Fi switch to the left to turn off the Wi-Fi.

---


**NOTE:** You can also disable the Wi-Fi from Quick Settings screen. See [Quick Settings](#) on how to launch Quick Settings screen.

---

## Bluetooth®

Use the Bluetooth feature of your ROG Phone to send or receive files and stream multimedia files with other smart devices over short distances. With Bluetooth, you can share your media files with your friends' smart devices, send data for print with a Bluetooth printer, or play music files with a Bluetooth speaker.

## Enabling Bluetooth®

1. Do any of the following to launch the Settings screen:
  - Launch Quick Settings then tap  > **Connections**.
  - Swipe up from the lower part of your Home screen then tap **Settings** > **Connections**.
2. Slide the Bluetooth switch to the right to turn on the Bluetooth.

---

**NOTE:** You can also enable the Bluetooth from Quick Settings screen. See [Quick Settings](#) on how to launch Quick Settings screen.

---

## Pairing your ROG Phone to a Bluetooth® device


Before using the Bluetooth feature of your ROG Phone in full scale, you have to pair it first with the Bluetooth device. The ROG Phone automatically stores the pairing connection of the Bluetooth device.

1. On the Settings screen, tap **Bluetooth** to display all available devices.

---

### IMPORTANT!

- If the device that you want to pair is not in the list, ensure to enable its Bluetooth feature and is discoverable.
  - See the user guide that came with your device to learn how to enable its Bluetooth and set it to discoverable.
- 


2. Tap  > **Refresh** to scan for more Bluetooth devices.
3. In the list of available devices, tap the Bluetooth device that you want to pair with.
4. Ensure that the same passkey show on both devices, then tap **Pair**.

---

**NOTE:** Turn off the Bluetooth feature when you're not using it to help save battery power.

---

## Unpairing your ROG Phone from the Bluetooth® device

1. On the Settings screen, tap Bluetooth to display all available and paired devices.
2. In the list of paired devices, tap  of Bluetooth device that you want to unpair, then tap **Forget**.

## Tethering

When Wi-Fi service is not available, you can use your ROG Phone as a modem or turn it into a Wi-Fi hotspot to get Internet access on your laptop, tablet, and other mobile devices.

---

**IMPORTANT!** Most mobile service providers may require a data plan for you to be able to use the tethering function. Contact your mobile service provider about availing of this data plan.

---


### NOTES:

- Internet access via tethering may be slower than the standard Wi-Fi or mobile connection.
  - Only a limited number of mobile devices can tether to your ROG Phone for Internet access.
  - Turn off the tethering feature when you're not using it to help save battery power.
- 

## Wi-Fi Hotspot

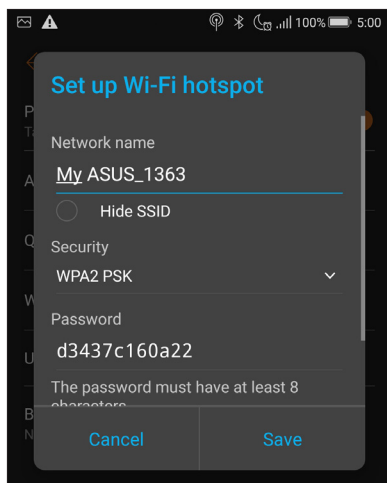
Turn your ROG Phone into a Wi-Fi Hotspot to share Internet connection with other devices.

1. Do any of the following to launch the Settings screen:

- Launch Quick Settings then tap  > **Connections**.
- Swipe up from the lower part of your Home screen then tap **Settings** > **Connections**.

2. Tap **Hotspot & Tethering** then slide **Portable Wi-Fi hotspot** to **ON**.

3. Tap **Portable Wi-Fi hotspot** then assign a unique SSID or network name and a strong 8-character password for your Wi-Fi hotspot. When done, tap **Save**.



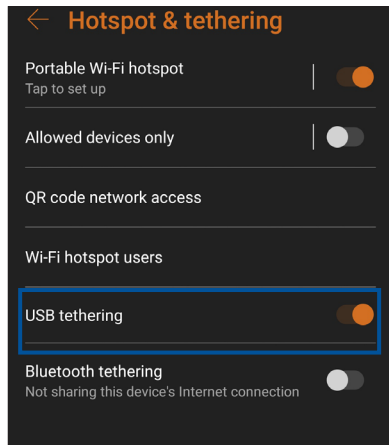
4. Connect other devices to your ROG Phone's hotspot connection the same way you connect to a Wi-Fi network.



## USB Tethering

Enable USB tethering on your ROG Phone and share its Internet connection with other devices.

1. Connect your ROG Phone to another device with a USB cable.
2. From the Settings screen, tap **Connections** > **Hotspot & Tethering**, then slide **USB tethering** to **ON** to enable tethering.



## Bluetooth Tethering

Enable Bluetooth tethering on your ROG Phone to share its Internet connection with other devices.

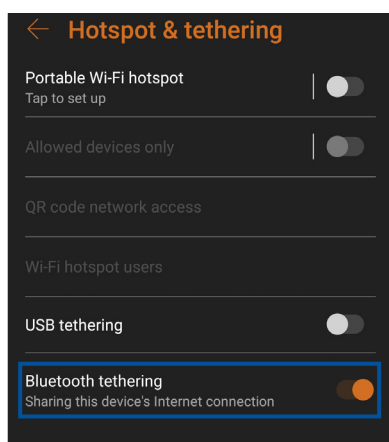
1. Enable Bluetooth on your ROG Phone and the other device.
2. Pair both devices.

---

**NOTE:** For details, see [Pairing your ROG Phone to a Bluetooth® device](#).

---

3. From the Settings screen, tap **Connections** > **Hotspot & Tethering**, then slide **Bluetooth tethering** to **ON**.



# Travel and Maps

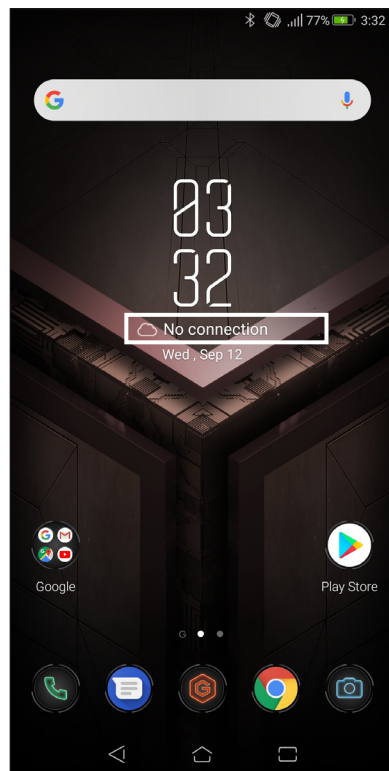
# 8

## Weather

Get real-time weather updates straight from your ROG Phone using the weather app. Using Weather, you can also check other weather details from around the world.

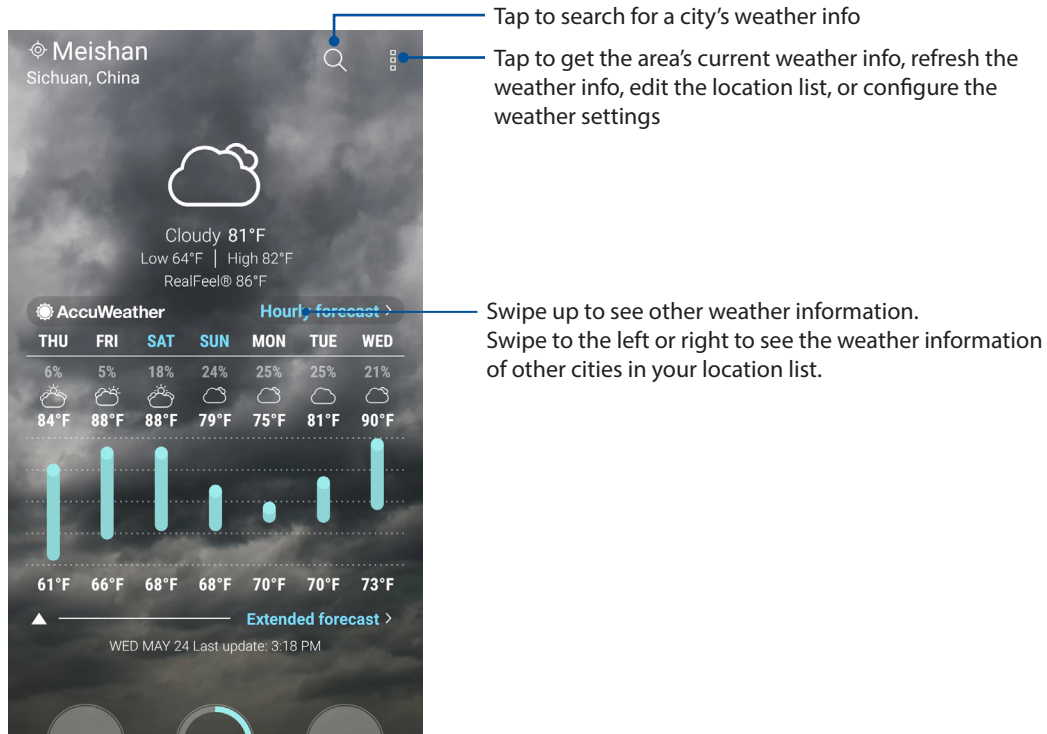
### Launching the Weather app

From your Home screen, tap the weather icon to launch the Weather app.



## Weather home screen

Set up and get your current location's weather updates as well as other parts of the world.



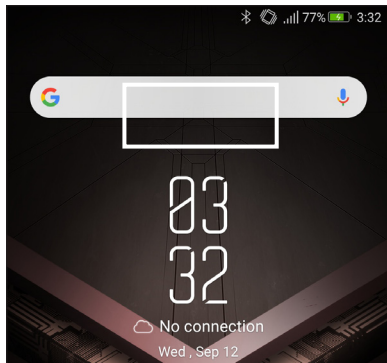
# Clock

Customize the time zone settings of your ROG Phone, set alarms, and use your ROG Phone as a stop watch using the Clock app.

## Launching Clock

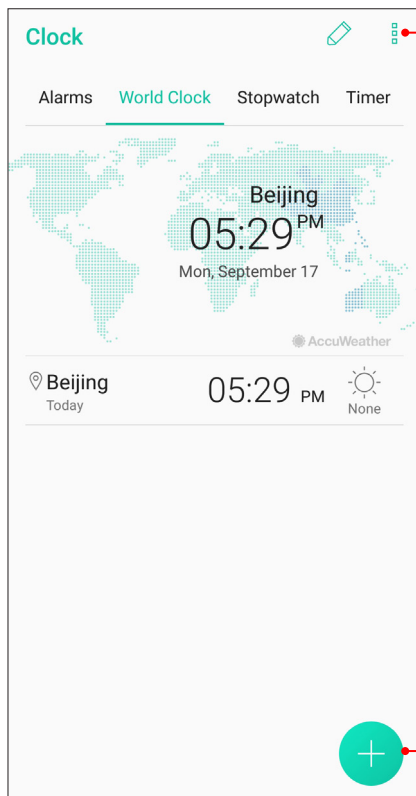
Launch the Clock app using either of the following options:

- Swipe up from the lower part of your Home screen then tap **Clock**.
- From your ROG Phone's home screen, tap the digital clock display.



## World Clock

Tap **CLOCK** to access the world clock settings of your ROG Phone.

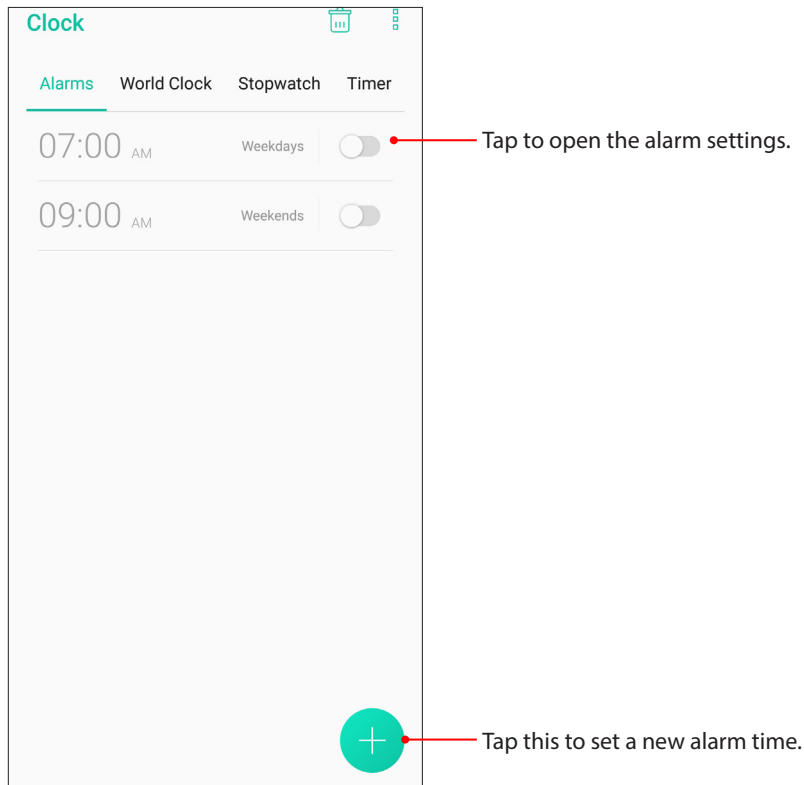


Tap this to access the Clock app settings.

Tap this to add a new city to mark on your world clock's map.

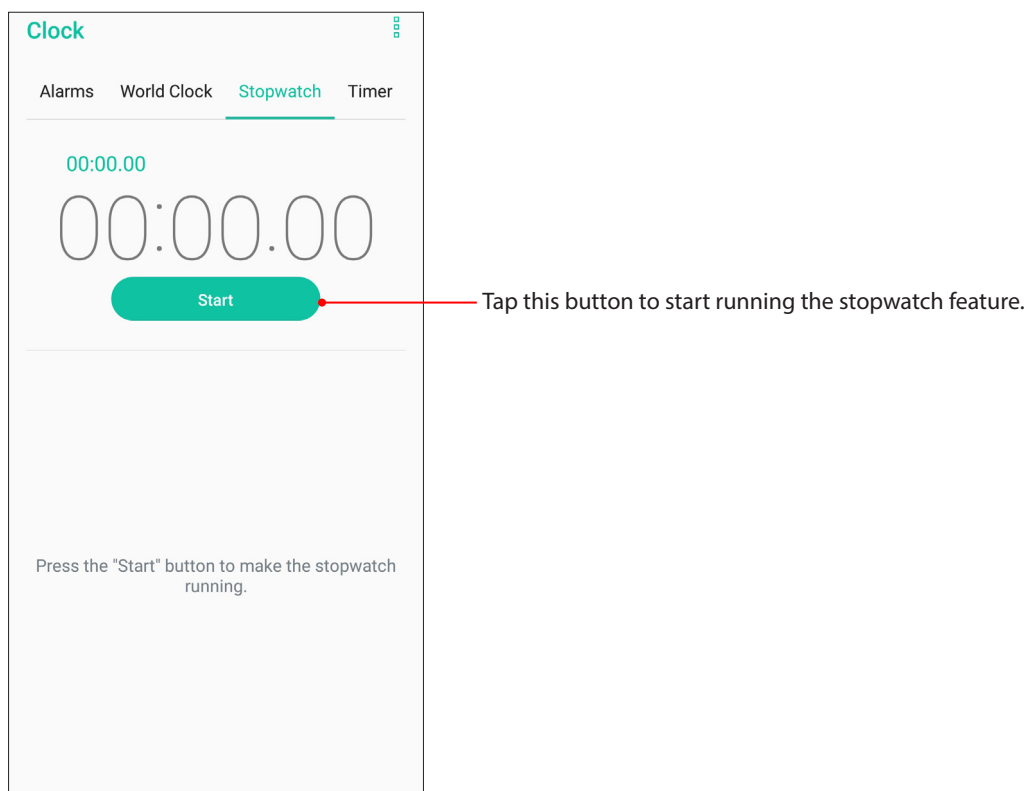
## Alarm clock

Tap **ALARM** to access the alarm clock settings of your ROG Phone.



## Stopwatch

Tap **STOPWATCH** to use your ROG Phone as a stopwatch.

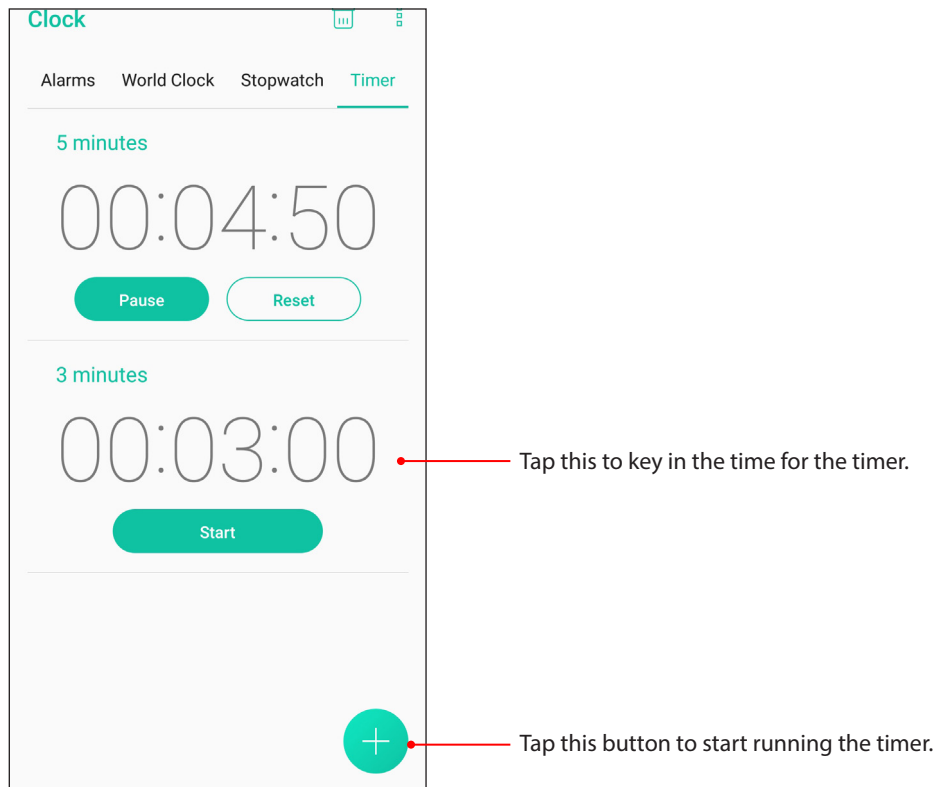


## Timer

You may set multiple timer options for your ROG Phone. To do this, follow the steps below:

### Setting the timer

1. Tap **TIMER** to access the timer feature of your ROG Phone.



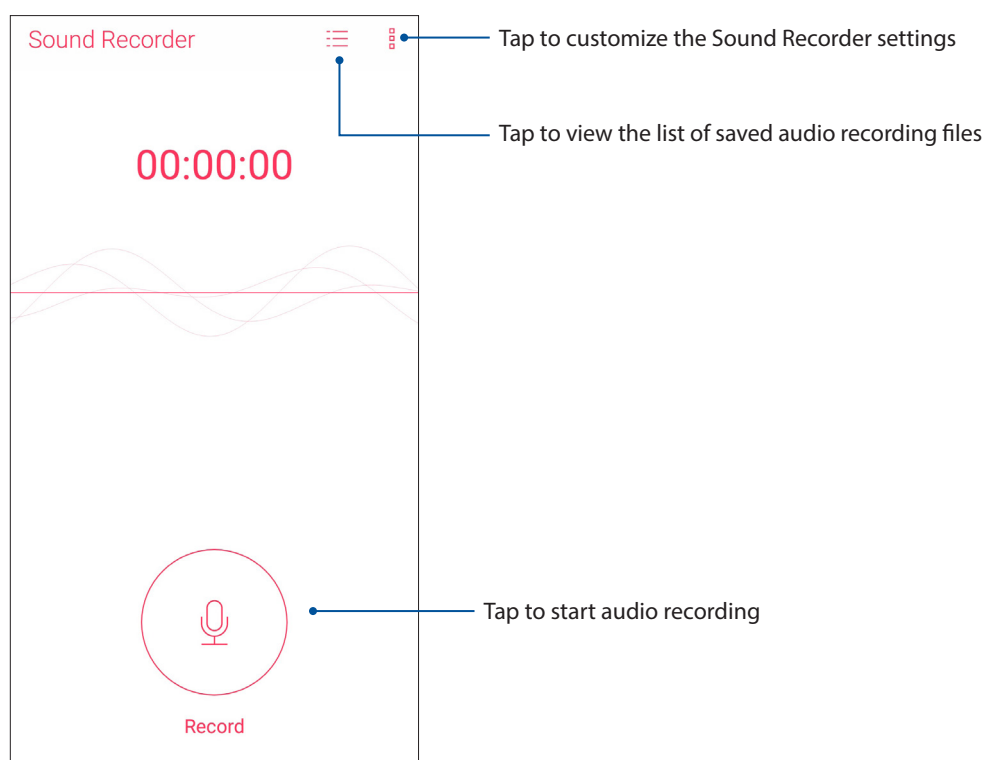
## Special Zen Tools

### Sound Recorder

Record audio files using your ROG Phone by enabling the Sound Recorder app.

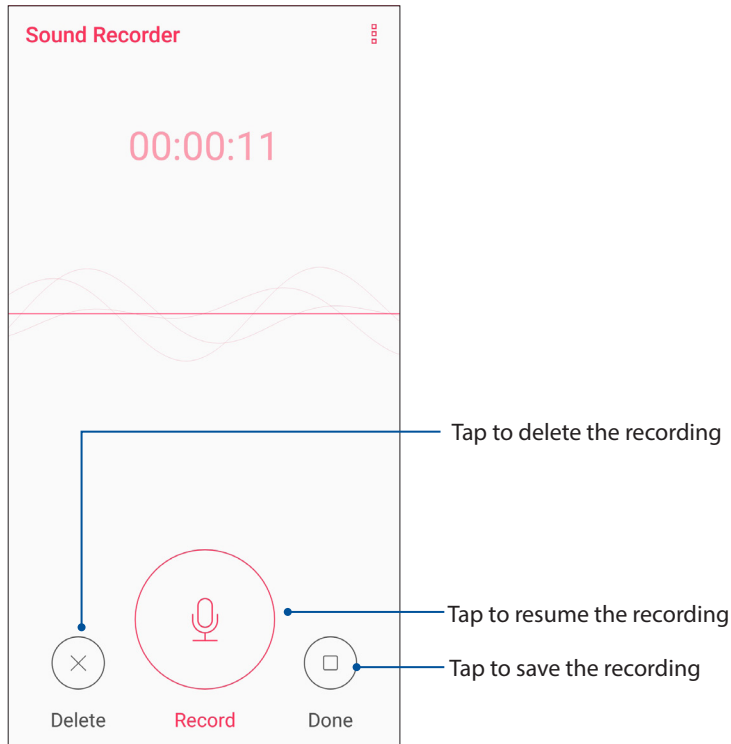
### Launching Sound Recorder

To launch Sound Recorder, swipe up from the lower part of your Home screen then tap **ASUS > Sound Recorder**.



## Pausing a recording

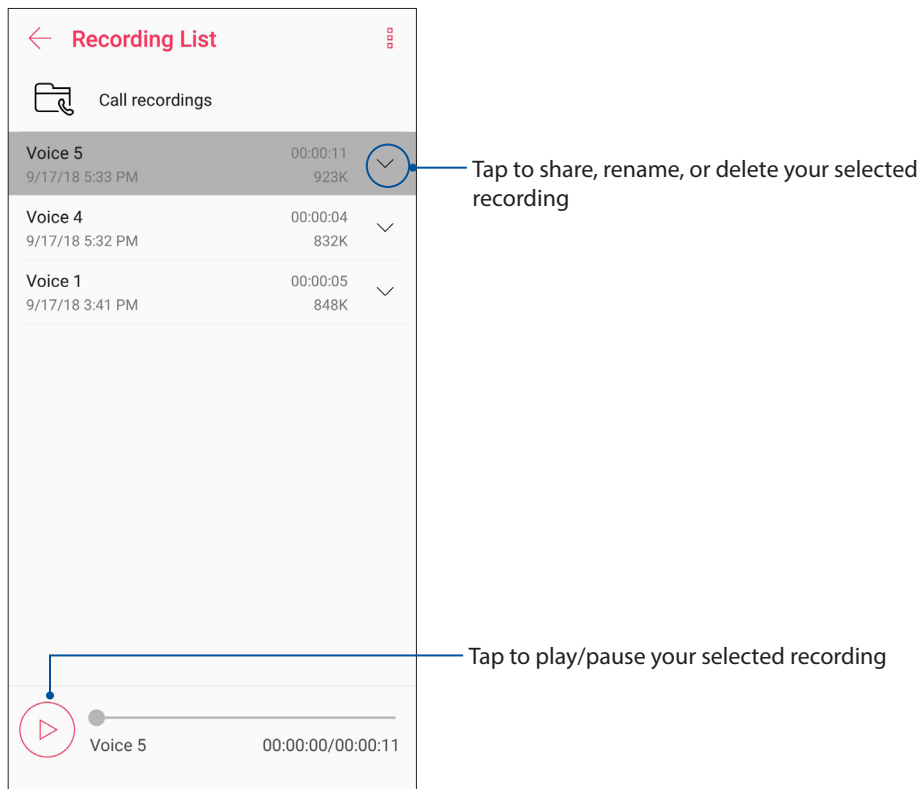
During a paused recording, you can choose to resume, delete, or save the recording.



## Recording List

From the Recording List, you can play, rename, share, or delete a saved audio recording file.

To view your recording list, tap  from the Sound Recorder main screen.

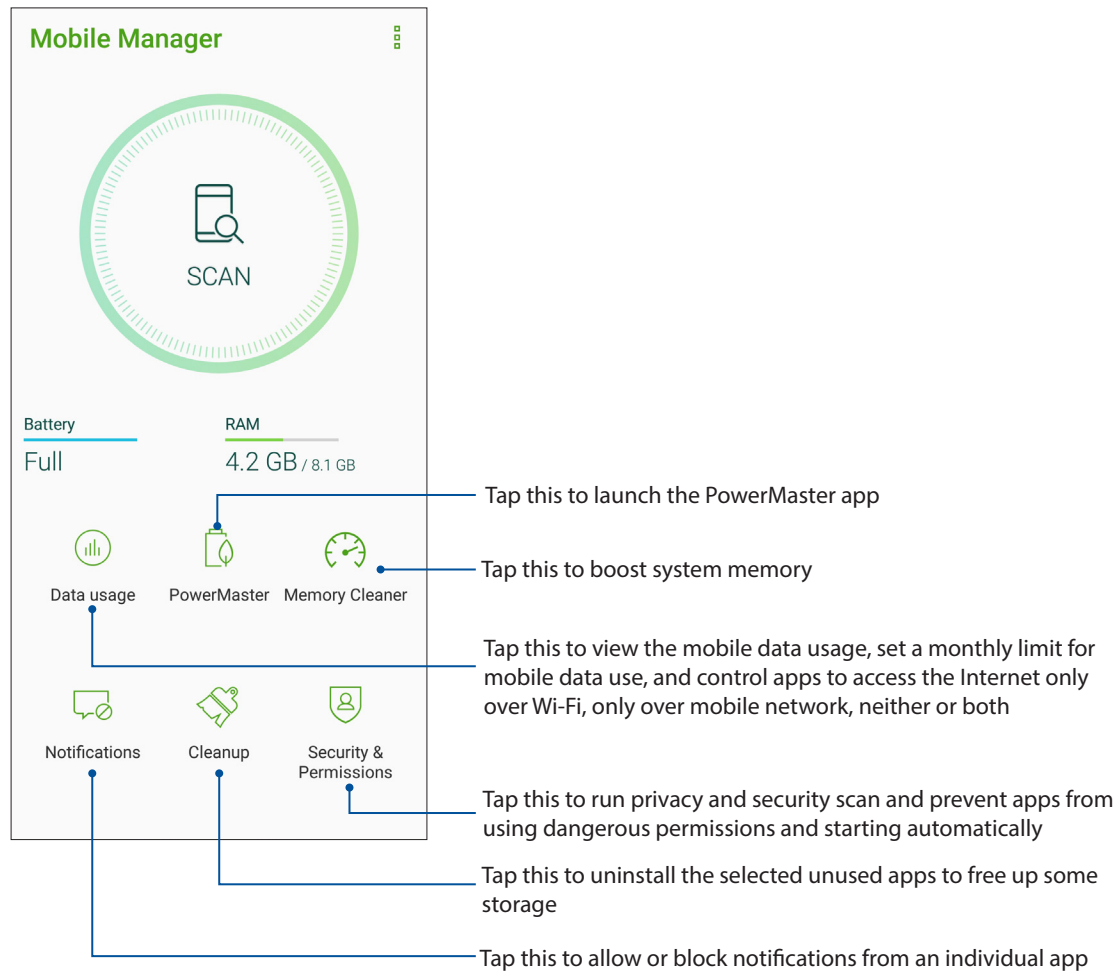




## Mobile Manager

Mobile Manager provides an integrated interface for several apps that are designed to optimize device performance, manage the phone power, storage usage and system notifications.

To launch the ASUS Mobile Manager app, swipe up from the lower part of your Home screen then tap **Mobile Manager**.

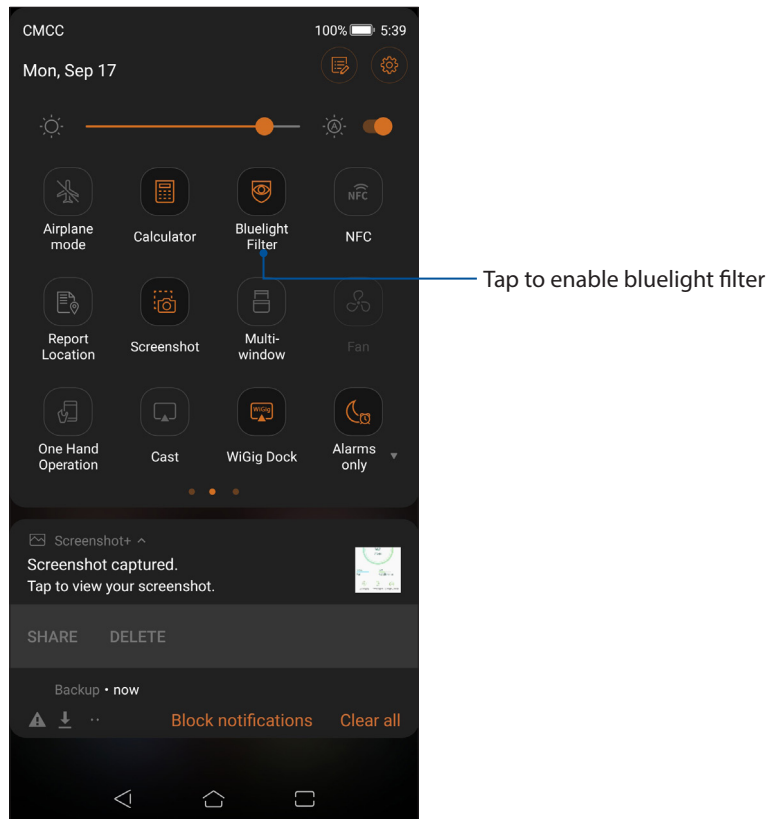


## Bluelight Filter

Bluelight Filter provides a mild paper-like display that reduces eye strain for a comfortable reading experience on your ROG Phone.

To enable Bluelight Filter:

- From the Quick settings panel, tap on the Bluelight Filter icon.

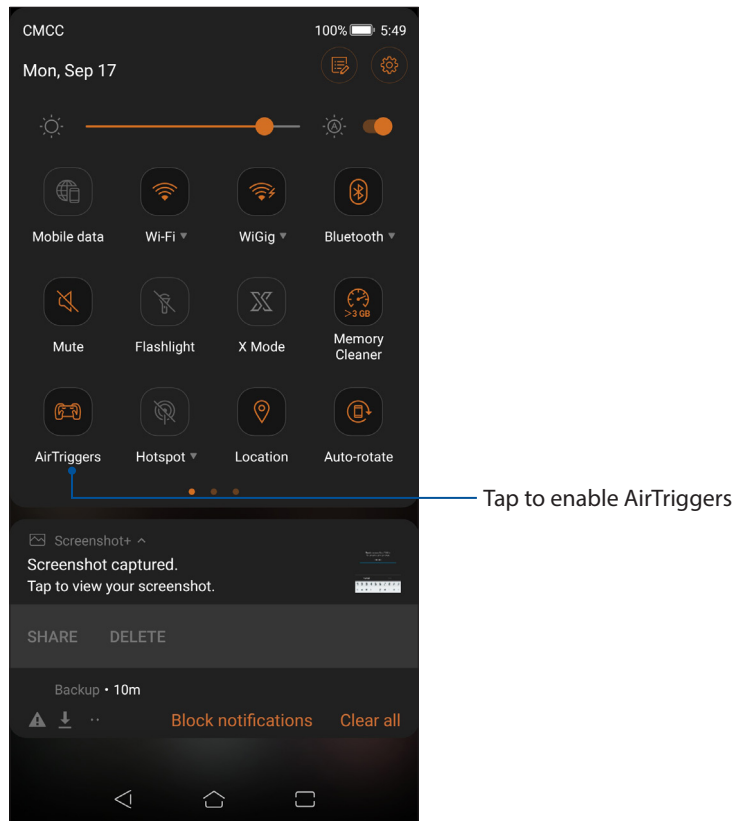


## AirTriggers

The exclusive AirTriggers feature provides two extra virtual hotkeys when you play games on your ROG Phone for optimal experience.

To enable AirTriggers:

- From the Quick settings panel, tap on the AirTriggers icon.

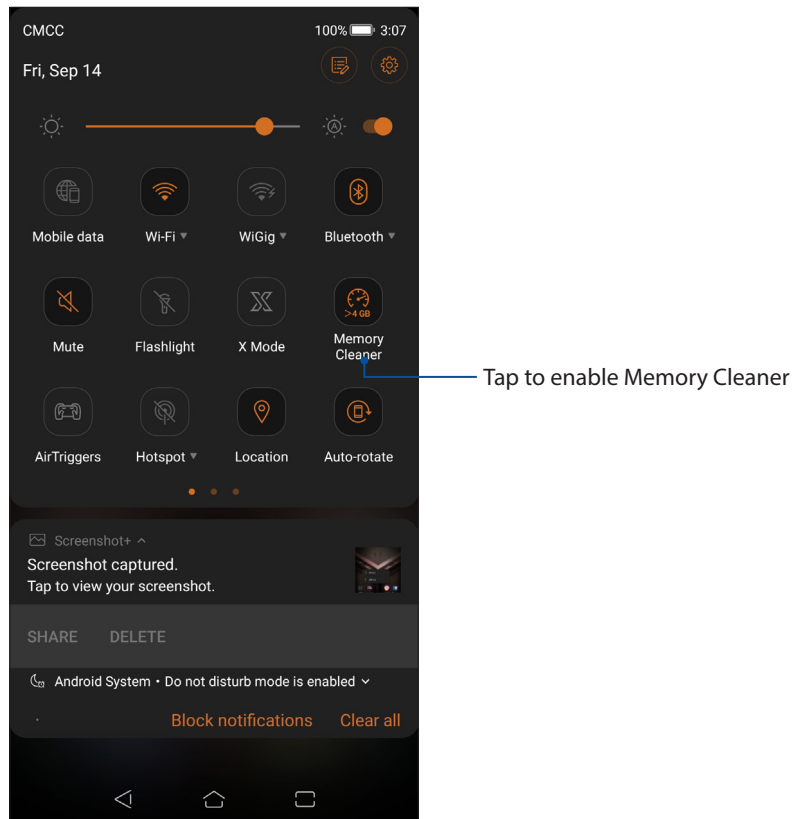


## Memory Cleaner

Memory cleaner provides boosted memory performance.

To enable Memory Cleaner:


- From the Quick settings panel, tap on the Memory Cleaner icon.



## Keeping your device up-to-date

Keep your ROG Phone in the loop of Android system updates and upgraded apps and features.

### Updating your system

1. Swipe up from the lower part of your Home screen then tap **Settings**.
2. On the Settings screen, slide down to display other items then tap **System > System updates** to check for system updates.
3. Tap  on the System updates screen to set up automatic download of system updates.

---

**NOTE:** You can preview the last time your ROG Phone's system was updated at the Last update check: of the System update window.

---

### Storage

You can store data, apps, or files on your ROG Phone (internal storage), on an external storage, or on an online storage. You need an internet connection to transfer or download your files on an online storage. Use the bundled USB cable to copy files to or from the computer to your ROG Phone.

### Backup

Back up data, Wi-Fi passwords, and other settings to Google servers using your ROG Phone.

1. Swipe up from the lower part of your Home screen then tap **Settings > System > Backup**.
2. From the Backup & reset window, you can:
  - **Back up to Google Drive:** This feature backs up your data, Wif-Fi passwords, and other settings to Google Drive when enabled.
  - **Backup account:** Allows you to specify the account you to be associated when you save your backup.

### Reset

Reset network settings and app preferences, or reset factory defaults.

1. Swipe up from the lower part of your Home screen then tap **Settings > System > Reset**.

2. From the Reset window, you can:

- **Network settings reset:** This feature restores Wi-Fi passwords, and other network settings.
- **App preferences reset:** This feature facilitates restoration of backed up settings and data when you reinstall an app.
- **Factory data reset:** Erases all data on phone.

## Securing your ROG Phone

Use the security features of your ROG Phone to prevent unauthorized calls or access of information.

### Unlocking your screen

When the screen is locked, you can open it with the security unlocking options that the ROG Phone offers you.

1. Swipe up from the lower part of your Home screen then tap **Settings > Security & lock screen**.
2. Tap **Lock screen** then select an option to unlock your ROG Phone.

---

#### NOTES:

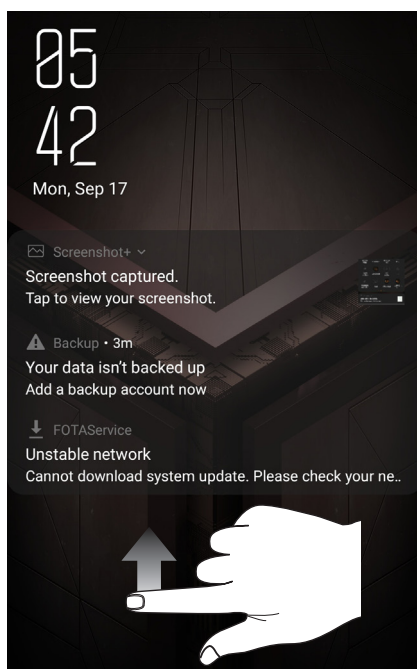
- Refer to section **Unlock screen options** for more information.
  - To deactivate the unlock screen option that you set, tap **None** on Choose screen lock screen.
- 

### Unlock screen options

Choose from these options to lock your ROG Phone.

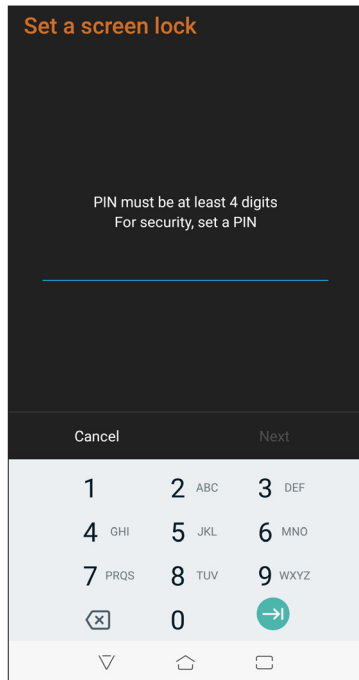
#### Swipe

Swipe up to unlock your ROG Phone.



## PIN

Key in at least four numbers to set a PIN.



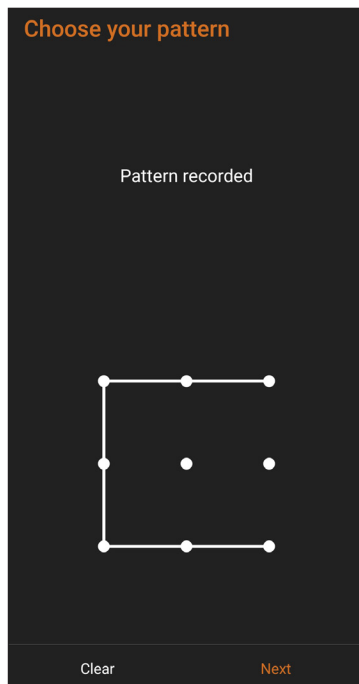
---

**IMPORTANT!** Ensure to remember the PIN that you created to unlock your device.

---

## Pattern

Slide your finger on the dots and create a pattern.



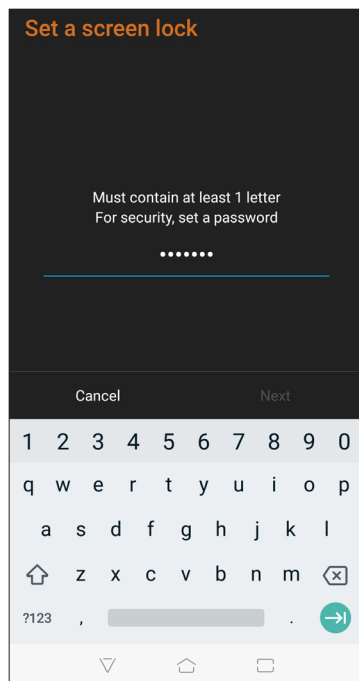
---

**IMPORTANT!** You can create a pattern with a minimum of four dots. Ensure to remember the pattern that you created to unlock your device.

---

## Password

Key in at least four characters to create a password.



---

**IMPORTANT!** Ensure to remember the password that you created to unlock your device.

---

## Setting your ROG Phone identity

Know your ROG Phone's identity such as serial number, IMEI (International Mobile Equipment Identity) number, or model number.

This is important, as when you may lose your ROG Phone, you can contact your mobile carrier and provide the information to blacklist the unauthorized use of your ROG Phone.

To display your ROG Phone's identity:

1. Swipe up from the lower part of your Home screen then tap **Settings**.
2. On the Settings screen, slide down to display other items then tap **System > About**. The About screen displays the status, legal information, model number, operating system version, hardware, and software information of your ROG Phone.
3. To see the serial number, SIM contact number, and IMEI of your ROG Phone, tap **Status**.



# Appendix

## Safety information

---

**CAUTION!** Use of controls or adjustments or performance of procedures other than those specified herein may result in hazardous radiation exposure.

---

### ROG Phone care

- Use your ROG Phone in an environment with ambient temperatures between 0 °C (32 °F) and 35 °C (95 °F).

### The battery

---

**WARNING:** Disassembling the battery by yourself will void its warranty and may cause serious harm.

---

Your ROG Phone is equipped with a high performance non-detachable Li-polymer battery. Observe the maintenance guidelines for a longer battery life.

- Do not remove the non-detachable Li-polymer battery as this will void the warranty.
- Avoid charging in extremely high or low temperature. The battery performs optimally in an ambient temperature of +5 °C to +35 °C.
- Do not remove and replace the battery with a non-approved battery.
- Use only ASUS battery. Using a different battery may cause physical harm/injury and may damage your device.
- Do not remove and soak the battery in water or any other liquid.
- Never try to open the battery as it contains substances that might be harmful if swallowed or allowed to come into contact with unprotected skin.
- Do not remove and short-circuit the battery, as it may overheat and cause a fire. Keep it away from jewelry or metal objects.
- Do not remove and dispose of the battery in fire. It could explode and release harmful substances into the environment.
- Do not remove and dispose of the battery with your regular household waste. Take it to a hazardous material collection point.
- Do not touch the battery terminals.

- To avoid fire or burns, do not disassemble, bend, crush, or puncture the battery.

---

**NOTES:**

- Risk of explosion if battery is replaced by an incorrect type.
  - Dispose of used battery according to the instructions.
- 

## **The charger**

- Use only the charger supplied with your ROG Phone.
- Never pull the charger cord to disconnect it from the power socket. Pull the charger itself.

## **Caution**

Your ROG Phone is a high quality piece of equipment. Before operating, read all instructions and cautionary markings on the (1) AC Adapter.

- Do not use the ROG Phone in an extreme environment where high temperature or high humidity exists. The ROG Phone performs optimally in an ambient temperature between 0 °C (32 °F) and 35 °C (95 °F).
- Do not disassemble the ROG Phone or its accessories. If service or repair is required, return the unit to an authorized service center. If the unit is disassembled, a risk of electric shock or fire may result.
- Do not short-circuit the battery terminals with metal items.

## **Operator access with a tool**

If a TOOL is necessary to gain access to an OPERATOR ACCESS AREA, either all other compartments within that area containing a hazard shall be inaccessible to the OPERATOR by the use of the same TOOL, or such compartments shall be marked to discourage OPERATOR access.

## **General Usage (typical body-worn) (for Japan)**

This device (front & rear side) should be operated under a separation distance of 5 mm from the human body.

\* The other four sides are not in close proximity to the human body at the general use as described above.

## Notices

### Federal Communications Commission Statement

This device complies with part 15 of the FCC Rules. Operation is subject to the following two conditions: (1) This device may not cause harmful interference, and (2) this device must accept any interference received, including interference that may cause undesired operation.

Changes or modifications not expressly approved by the party responsible for compliance could void the user's authority to operate the equipment.

This equipment has been tested and found to comply with the limits for a Class B digital device, pursuant to part 15 of the FCC Rules. These limits are designed to provide reasonable protection against harmful interference in a residential installation. This equipment generates, uses and can radiate radio frequency energy and, if not installed and used in accordance with the instructions, may cause harmful interference to radio communications. However, there is no guarantee that interference will not occur in a particular installation. If this equipment does cause harmful interference to radio or television reception, which can be determined by turning the equipment off and on, the user is encouraged to try to correct the interference by one or more of the following measures:

- Reorient or relocate the receiving antenna.
- Increase the separation between the equipment and receiver.
- Connect the equipment into an outlet on a circuit different from that to which the receiver is connected.
- Consult the dealer or an experienced radio/TV technician for help.

The antenna(s) used for this transmitter must not be co-located or operated in conjunction with any other antenna or transmitter.

The country code selection is for non-US models only and is not available to all US models. Per FCC regulation, all WiFi products that are marketed in US must be fixed to US-operated channels only.

The responsible party within the USA per 47 CFR Part 2.1077(a)(3):

#### **ASUS COMPUTER INTERNATIONAL (America)**

Address: Corporate Way, Fremont, CA 94539, USA

Telephone: +1-510-739-3777

### RF Exposure Information (SAR)

This device has been tested and meets applicable limits for Radio Frequency (RF) exposure.

Specific Absorption Rate (SAR) refers to the rate at which the body absorbs RF energy. SAR limits are 1.6 Watts per kilogram (over a volume containing a mass of 1 gram of tissue) in countries that follow the United States FCC limit and 2.0 W/kg (averaged over 10 grams of tissue) in countries that follow the Council of the European Union limit. Tests for SAR are conducted using standard operating positions with the device transmitting at its highest certified power level in all tested frequency bands.

To reduce exposure to RF energy, use a hands-free accessory or other similar option to keep this device away from your head and body. Carry this device at least 10 mm away from your body to ensure exposure levels remain at or below the as-tested levels. Choose the belt clips, holsters, or other similar body-worn accessories which do not contain metallic components to support operation in this manner. Cases with metal parts may change the RF performance of the device, including its compliance with RF exposure guidelines, in a manner that has not been tested or certified, and use such accessories should be avoided.

The highest FCC SAR values for the device (ASUS\_Z01RD) are as follows:

- 1.160 W/Kg @1g (Head)
- 0.890W/Kg @1g (Body)

The FCC has granted an Equipment Authorization for this device (ASUS\_Z01RD) with all reported SAR levels evaluated as in compliance with the FCC RF exposure guidelines. SAR information on this device is on file with the FCC and can be found under the Display Grant section of [www.fcc.gov/oet/ea/fccid](http://www.fcc.gov/oet/ea/fccid) after searching on FCC ID: MSQZ01RD.

## EU Radio Equipment Directive Compliance

### Simplified EU Declaration of Conformity

Hereby, ASUSTek Computer Inc. declares that the radio equipment ASUS\_Z01RD is in compliance with Directive 2014/53/EU. Full text of EU declaration of conformity is available at <https://www.asus.com/support/>. (Search for ZS620KL/ZS621KL)

### RF Output Table [WW SKU (RF Band)]

Items	Maximum Radio-Frequency Output Power Table	
<b>Bluetooth</b>	BR/EDR (2402~2480 MHz)	9.98dBm
	BT LE 4.0 (2402~2480 MHz)	5.17dBm
	BT LE 5.0 (2402~2480 MHz)	5.03dBm
<b>WLAN 2.4GHz</b>	802.11b (2412~2472 MHz)	16.44dBm
	802.11g (2412~2472 MHz)	16.49dBm
	802.11n HT20 (2412~2472 MHz)	16.26dBm
<b>WLAN 5GHz Band I</b>	802.11a (5150-5250MHz)	18.26dBm
	802.11n HT20 (5150-5250MHz)	17.11dBm
	802.11n HT40 (5150-5250MHz)	15.65dBm
	802.11ac HT80 (5150-5250MHz)	15.78dBm
<b>WLAN 5GHz Band II</b>	802.11a (5250-5350MHz)	16.82dBm
	802.11n HT20 (5250-5350MHz)	15.62dBm
	802.11n HT40 (5250-5350MHz)	14.22dBm
	802.11ac HT80 (5250-5350MHz)	14.35dBm
<b>WLAN 5GHz Band III</b>	802.11a (5470-5725MHz)	17.97dBm
	802.11n HT20 (5470-5725MHz)	16.92dBm
	802.11n HT40 (5470-5725MHz)	15.47dBm
	802.11ac HT80 (5470-5725MHz)	15.3dBm
<b>WLAN 5GHz Band IV</b>	802.11a (5725-5850MHz)	17.94dBm
	802.11n HT20 (5725-5850MHz)	16.65dBm
	802.11n HT40 (5725-5850MHz)	15.26dBm
	802.11ac HT80 (5725-5850MHz)	15.32dBm
<b>NFC</b>	13.553~13.567 MHz (H-field strength)	-6.12 dBuA/m
<b>GSM</b>	GSM900 Burst (880~915; 925~960 MHz)	32.5dBm
	GSM850 Burst	32.5dBm
	GSM1800 Burst (1710~1785 ; 1805~1880 MHz)	29.5dBm
	GSM1900 Burst	29.5dBm
<b>WCDMA</b>	Band1/2/3/4/5/6/19	24dBm
	Band 8	25dBm
<b>FDD-LTE</b>	Band1/2/3/4/5/8/12/17/18/19/20/26/28/30	24dBm
<b>FDD-LTE</b>	Band7	23dBm
<b>TDD-LTE</b>	Band34/38/39/40/41	24dBm
<b>TD-SCDMA</b>	Band A (upper)(34)	24dBm
	Band F (39)	24dBm

\* ROG Phone 4G/LTE band compatibility varies by region, please check compatibility with your local carriers.

## RF Output Table [TW SKU (RF Band)]

Items	Maximum Radio-Frequency Output Power Table	
<b>Bluetooth</b>	BR/EDR (2402~2480 MHz)	9.98dBm
	BT LE 4.0 (2402~2480 MHz)	5.17dBm
	BT LE 5.0 (2402~2480 MHz)	5.03dBm
<b>WLAN 2.4GHz</b>	802.11b (2412~2472 MHz)	16.44dBm
	802.11g (2412~2472 MHz)	16.49dBm
	802.11n HT20 (2412~2472 MHz)	16.26dBm
<b>WLAN 5GHz Band I</b>	802.11a (5150-5250MHz)	18.26dBm
	802.11n HT20 (5150-5250MHz)	17.11dBm
	802.11n HT40 (5150-5250MHz)	15.65dBm
	802.11ac HT80 (5150-5250MHz)	15.78dBm
<b>WLAN 5GHz Band II</b>	802.11a (5250-5350MHz)	16.82dBm
	802.11n HT20 (5250-5350MHz)	15.62dBm
	802.11n HT40 (5250-5350MHz)	14.22dBm
	802.11ac HT80 (5250-5350MHz)	14.35dBm
<b>WLAN 5GHz Band III</b>	802.11a (5470-5725MHz)	17.97dBm
	802.11n HT20 (5470-5725MHz)	16.92dBm
	802.11n HT40 (5470-5725MHz)	15.47dBm
	802.11ac HT80 (5470-5725MHz)	15.3dBm
<b>WLAN 5GHz Band IV</b>	802.11a (5725-5850MHz)	17.94dBm
	802.11n HT20 (5725-5850MHz)	16.65dBm
	802.11n HT40 (5725-5850MHz)	15.26dBm
	802.11ac HT80 (5725-5850MHz)	15.32dBm
<b>NFC</b>	13.553~13.567 MHz (H-field strength)	-6.12 dBuA/m
<b>GSM</b>	GSM900 Burst (880~915; 925~960 MHz)	33.5(dBm)
	GSM850 Burst	33.5(dBm)
	GSM1800 Burst (1710~1785; 1805~1880 MHz)	31(dBm)
	GSM1900 Burst	31(dBm)
<b>WCDMA</b>	Band1/2/5/6/8/19	24dBm
<b>FDD-LTE</b>	Band 1/2/3/5/7/8/18/19/20/26/28	24dBm
<b>TDD-LTE</b>	Band 38/39/40/41	24dBm

\* ROG Phone 4G/LTE band compatibility varies by region, please check compatibility with your local carriers.

**NOTE:** This RF output power table is for EU member states, the EEA States, the EFTA States and Turkey only. The frequency range and the RF output power may differ from other non-EU countries.

The Wi-Fi operating in the band 5150-5350MHz shall be restricted to indoor use for countries listed in the table below:

AT	BE	BG	CZ	DK	EE	FR
DE	IS	IE	IT	EL	ES	CY
LV	LI	LT	LU	HU	MT	NL
NO	PL	PT	RO	SI	SK	TR
FI	SE	CH	UK	HR		

## RF Exposure Information

This ASUS product has been tested and meets applicable European SAR limits. The SAR limit is 2.0 W/kg in countries that set the limit averaged over 10 grams of tissue. The specific maximum SAR values for this device are as follows:

- Head: 1.190 W/Kg [WW SKU (RF Band)]
- Body: 1.470 W/Kg [WW SKU (RF Band)]
- Head: 1.160 W/Kg [TW SKU (RF Band)]
- Body: 1.590 W/Kg [TW SKU (RF Band)]

When carrying this device or using it while worn on the body, either use an approved accessory such as a holster or otherwise maintain a distance of 0.5 cm from the body to ensure compliance with RF exposure requirements.

## CE Marking



## Using GPS (Global Positioning System) on your ROG Phone

To use the GPS positioning feature on your ROG Phone:

Ensure that your device is connected to the Internet before using Google Map or any GPS-enabled apps.

For first-time use of a GPS-enabled app on your device, ensure that you are outdoors to get the best positioning data.

When using a GPS-enabled app on your device inside a vehicle, the metallic component of the car window and other electronic devices might affect the GPS performance.

## Prevention of Hearing Loss

To prevent possible hearing damage, do not listen at high volume levels for long periods.



For France, headphones/earphones for this device are compliant with the sound pressure level requirement laid down in the applicable EN 50332-1:2013 and/or EN50332-2:2013 standard required by French Article L.5232-1.

## Caution:

i.the device for operation in the band 5150–5250 MHz is only for indoor use to reduce the potential for harmful interference to co-channel mobile satellite systems;

## Avertissement:

i.les dispositifs fonctionnant dans la bande de 5 150 à 5 250 MHz sont réservés uniquement pour

une utilisation à l'intérieur afin de réduire les risques de brouillage préjudiciable aux systèmes de satellites mobiles utilisant les mêmes canaux.

## India E-Waste (Management) Rules 2016

This product complies with the "India E-Waste (Management) Rules, 2016" and prohibits use of lead, mercury, hexavalent chromium, polybrominated biphenyls (PBBs) and polybrominated diphenyl ethers (PBDEs) in concentrations exceeding 0.1% by weight in homogenous materials and 0.01 % by weight in homogenous materials for cadmium, except for the exemptions listed in Schedule II of the Rule.

## India BIS -IS 16333 Notice

Language Input : Hindi, English, Tamil

Readability: Assamese, Bangla, Bodo(Boro), Dogri, Gujarati, Hindi, Kannada, Kashmiri, Konkani, Maithili, Malayalam, Manipuri(Bangla), Manipuri(Meetei Mayek), Marathi, Nepali, Oriya, Panjabi, Santhali, Sanskrit, Sindhi (Devanagari) ,Tamil, Telugu, Urdu and English

## Regional notice for Singapore

Complies with  
IMDA Standards  
DB103778

This ASUS product complies with IMDA Standards.

## Coating notice

**IMPORTANT!** To provide electrical insulation and maintain electrical safety, a coating is applied to insulate the device except on the areas where the I/O ports are located.

## Green ASUS notice

ASUS is devoted to creating environment-friendly products and packaging to safeguard consumers' health while minimizing the impact on the environment. The reduction of the number of the manual pages complies with the reduction of carbon emission.

For the detailed user manual and related information, refer to the user manual included in the ASUS Tablet or visit the ASUS Support Site at <http://support.asus.com/>.

## ASUS Recycling/Takeback Services

ASUS recycling and takeback programs come from our commitment to the highest standards for protecting our environment. We believe in providing solutions for you to be able to responsibly recycle our products, batteries, other components as well as the packaging materials. Please go to <http://csr.asus.com/english/Takeback.htm> for detailed recycling information in different regions.

Model name: ASUS\_Z01RD (ZS620KL/ZS621KL)

<b>Manufacturer:</b>	ASUSTeK Computer Inc.
<b>Address:</b>	4F, No.150, LI-TE RD., PEITOU, TAIPEI 112, TAIWAN
<b>Authorised representative in Europe:</b>	ASUS Computer GmbH
<b>Address:</b>	HARKORT STR. 21-23, 40880 RATINGEN, GERMANY



# Index

## A

### App shortcuts

- adding 22
- removing 22

### ROG Phone 8

- charging 11
- microSD card
  - removing 10
- micro SIM card 9
  - installing 9
- Parts and features 8
- turning on/off 14

## B

### Backup and reset 77

### block list 53

- blocking 53
- unblocking 53

### Bluetooth 64

- enabling 64
- pairing 65
- unpairing 65

## C

### Call logs 47

- redial your last-called number 48
- saving calls to Contacts 47

### Calls 45

- answering 47
- calling from Contacts 46
- calling your favorite contacts 47
- dialing a phone number 45
- launching the Phone app 45
- other call options 48
- receiving 47
- recording 49
- see also Contacts 50
- see Call logs 47
- see Extension number 45
- see Multiple calls 49
- see Smart Dialing 46

### Camera 57

- Camera home screen 58
- launching 57

### Chrome 36

- bookmarking pages 37
- clearing the browser cache 37
- launching 36
- reading the pages later 37

- sharing pages 37

### Clock 70

- alarm clock 71
- launching 70
- stopwatch 71
- timer 72
- world clock 70

### Cloud 42

### Contacts 50

- adding 51
- adding an extension number 51
- Contacts Settings 50
- customizing your contact's profile 52
- see also Block list 53
- see also Social networking 53
- setting up your profile 50

## D

### Date and time 29

- setting up 29

### Dual SIM feature 43

- assigning 44
- renaming 43

## E

### Easy Mode 24

- adding shortcuts 25, 26
- enabling 24, 26, 27
- removing shortcuts 25, 26

### Extension number 45

- auto dialing 46
- confirmation prompt 45
- dialing 45

## F

### Face Unlock 33

### Favorite contacts 47

- calling 47
- marking 52

### File Manager 41

- accessing the internal storage 41

### Fingerprint 31

- setting up fingerprint ID from Settings 33
- Setting up fingerprint ID from Settings 32
- Starting your ROG Phone for the first time 31
  - locate finger print scanner 31
  - protect your phone 31

### First-time startup 15

## G

### Gallery 61

- deleting files 61

- editing images 62
- sharing files 61
- viewing the photo location 61

GIF animation 59

Gmail 38

Google Calendar 39

- Creating events 39
- Creating reminders 40
- Editing or removing events 39
- Editing or removing reminders 40

Google Messenger 54

- Replying to messages 54
- Sending messages 54

Google Play Music 56

- Setting up your Google Play Music 56

## H

Headset 55

- connecting 55

Home screen 19

- personalizing 22
- see also Easy Mode 24
- see also Wallpapers 23, 27

## K

Kids Mode 27

- using Kids Mode 27

## L

Lock screen 30

- customizing 30
- see also Securing your ROG Phone 78

## M

Managing your call logs 47

- blocking 47
- Redialing your last-called number 48
- saving to Contacts 47

MicroSD 9

Micro SIM card

- Installing a Micro SIM card 9

Micro SIM cards 43

- assigning a preferred micro SIM card 44
- data service 44
- renaming 43
- voice calls 44

Mobile Manager 75

Mobile network 63

- enabling 63

Multiple calls 49

- answering another call 49

## Q

Quick settings 20

- adding or removing buttons 20

## R

Ringtone 29

- setting up 29
- Sound & Vibration 29

## S

Security 78

Smart Dialing 46

Social networking 53

- syncing 54

Sound Recorder 73, 76

- Pausing a recording 74
- Recording List 74

Storage 77

System 77

- updating 77

System notifications 21

## T

Tethering

- Wi-Fi Hotspot 66

Touchscreen 16

- launching apps or selecting items 16
- moving or deleting items 16
- moving through pages or screens 17
- zooming in 17
- zooming out 18

## W

Wallpapers 23, 27

- animated wallpaper 23
- wallpaper and background tint 23

Weather 68

- launching 68
- Weather home screen 69

WebStorage 42

Wi-Fi 63

- connecting 64
- disabling 64
- enabling 63
- see also Wi-Fi Hotspot tethering 66

## Z

ZenUI 7