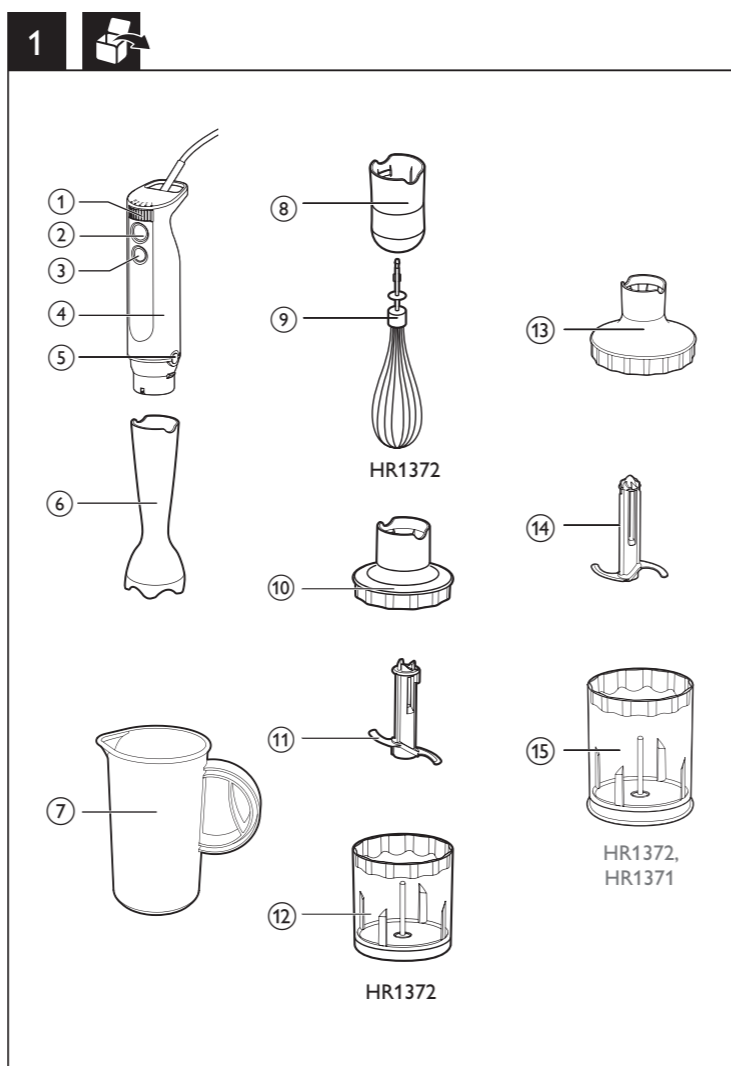


HR1370  
HR1371  
HR1372



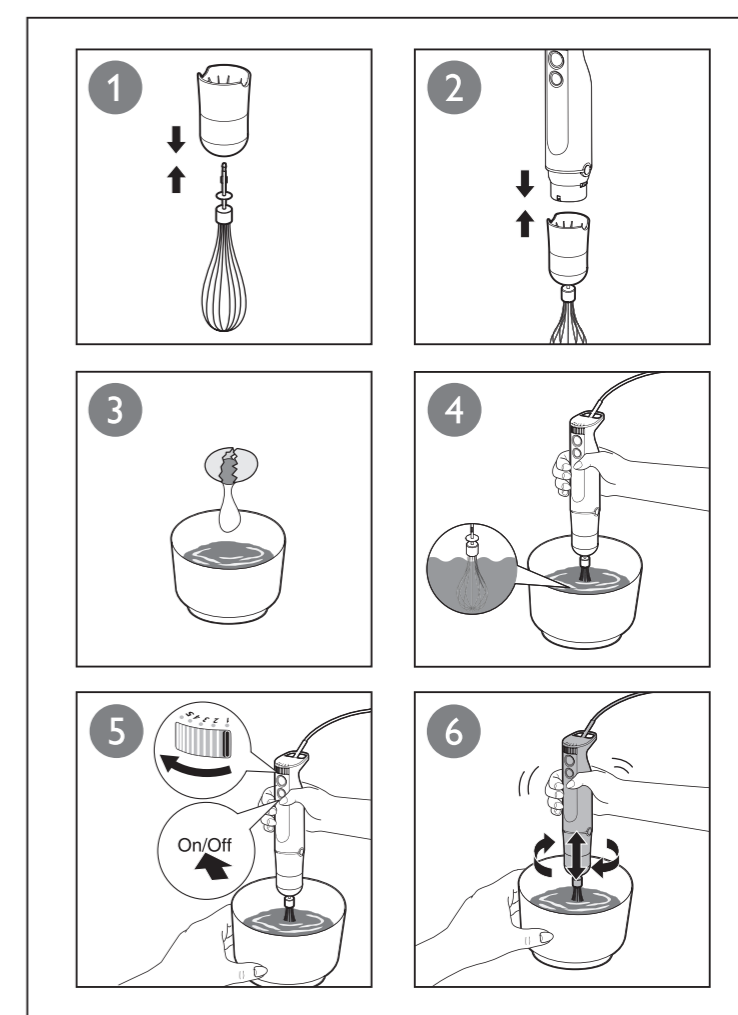
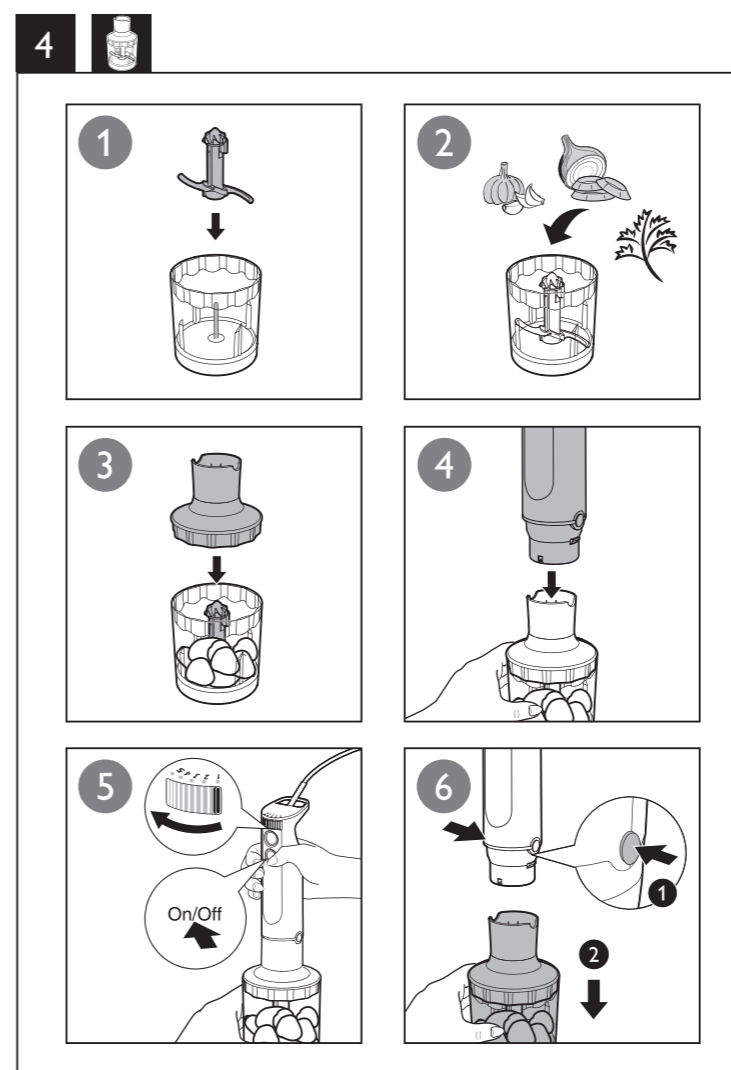
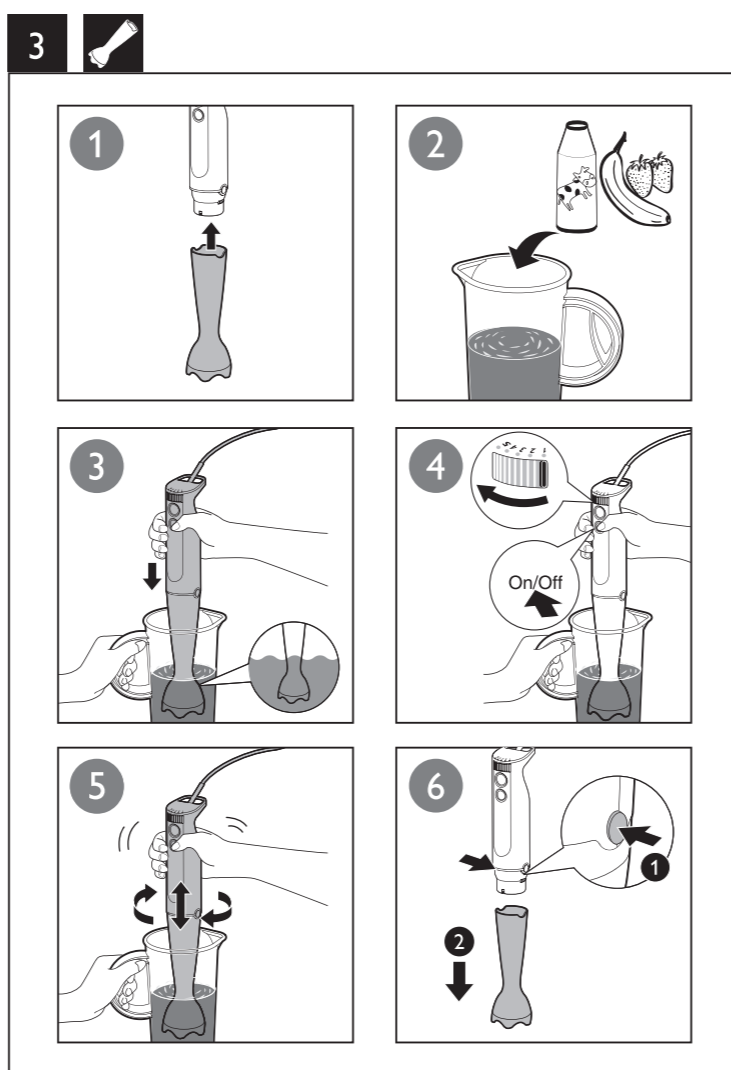
EN	User manual	NL	Gebruiksaanwijzing
DA	Brugervejledning	NO	Brukerhåndbok
DE	Benutzerhandbuch	PT	Manual do utilizador
EL	Εγχειρίδιο χρήσης	SV	Användarhandbok
ES	Manual del usuario	TR	Kullanım kılavuzu
FI	Käyttöopas		دليل المستخدم AR
FR	Mode d'emploi		راهنمای کاربرد FA
IT	Manuale utente		

**PHILIPS**



		<b>Kg</b> (MAX)		
		100-200 ml	30 sec	Turbo
		100-400 ml	60 sec	5
		100-500 ml	60 sec	5
		100-1000 ml	60 sec	5
		250 ml	70-90 sec	
		4 x	120 sec	
		100 g	5 x 1 sec	1-2
		100 g	5 sec	Turbo
		20 g	5 x 1 sec	3-4
		50-100 g (max)	15 sec	Turbo
		100 g	2 x 10 sec	Turbo

		<b>Kg</b> (MAX)		
		200 g	5 x 1 sec	1-2
		200 g	10 sec	Turbo
		30 g	10 x 1 sec	3-4
		200 g	20 sec	Turbo
		200 g	30 sec	Turbo
		2 x	4 x 1 sec	1-2
		100 g	20 sec	Turbo
		80 g	30 sec	Turbo
		500 g	30 sec	Turbo
		8 x	Turbo x 5 ~ Turbo x 8	Turbo
		8 x	10 sec	Turbo



Specifications are subject to change without notice  
© 2013 Koninklijke Philips Electronics N.V.  
All rights reserved.



HR1370\_1371\_1372\_UM\_WEU\_V2.0

## English

### 1 Introduction

Congratulations on your purchase and welcome to Philips! To fully benefit from the support that Philips offers, register your product at [www.philips.com/welcome](http://www.philips.com/welcome). The appliance only works when all parts are properly assembled and the lid is properly locked in place with the clamps.  
For recipes to use with your hand blender, go to [www.philips.com/kitchen](http://www.philips.com/kitchen).

### 2 Important

Read this user manual carefully before you use the appliance, and save the user manual for future reference.

#### Danger

- Never immerse the motor unit in water or any other liquid, nor rinse it under the tap.
- Do not clean the motor unit in the dishwasher.

#### Warning

- Check if the voltage indicated on the appliance corresponds to the local mains voltage before you connect the appliance.
- Do not use the appliance if the plug, the mains cord or other parts are damaged.
- If the mains cord is damaged, you must have it replaced by Philips, a service center authorized by Philips or similarly qualified persons in order to avoid a hazard.
- If the appliance is damaged, always have it replaced with one of the original type, otherwise your guarantee is no longer valid.
- This appliance shall not be used by children. Keep the appliance and its cord out of reach of children.
- This Appliance can be used by persons with reduced physical, sensory or metal capabilities or lack of experience and knowledge if they have been given supervision or instruction concerning use of the appliance in a safe way and if they understand the hazards involved.
- Children should be supervised to make sure that they do not play with the appliance.
- Do not touch the blades or paddle, especially when the appliance is plugged in. The blades are very sharp.
- If the blades or paddle get stuck, unplug the appliance before you remove the ingredients that block the blades.
- To avoid splashing, always immerse the bar into the ingredients before you switch on the appliance, especially when you process hot ingredients.

#### Caution

- Switch off the appliance and disconnect it from the mains before you change accessories or approach parts that move during use and cleaning.
- Never use any accessories or parts from other manufacturers or that Philips does not specifically recommend. If you use such accessories or parts, your guarantee becomes invalid.
- This appliance is intended for household use only.
- Do not exceed the quantities and processing times indicated in Fig.2.
- Do not process more than 1 batch without interruption. Let the appliance cool down to room temperature before you continue processing.
- Maximum noise level = 85 dB(A)

#### Overheat protection

This appliance is equipped with overheat protection. If the appliance overheats, it switches off automatically. Unplug the appliance and let it cool down for 5 minutes. Then put the mains plug back into the power outlet and switch on the appliance again. Please contact your Philips dealer or an authorized Philips service center if the overheat protection is activated too often.

#### Recycling



Your product is designed and manufactured with high quality materials and components, which can be recycled and reused.  
When you see the crossed-out wheel bin symbol attached to a product, it means the product is covered by the European Directive 2002/96/EC.



Never dispose of your product with other household waste. Please inform yourself about the local rules on the separate collection of electrical and electronic products. The correct disposal of your old product helps prevent potentially negative consequences on the environment and human health.

#### Electromagnetic fields (EMF)

This Philips appliance complies with all standards regarding electromagnetic fields (EMF). If handled properly and according to the instructions in this user manual, the appliance is safe to use based on scientific evidence available today.

### 3 Overview

1	Speed selector	<b>Mini chopper (HR1372 only):</b>
2	On/off button	10 Lid
3	Turbo speed button	11 Blade unit
4	Motor unit	12 Bowl
5	Release button	<b>Extra-large chopper (HR1372/HR1371 only):</b>
6	Blender bar	13 Lid
7	Beaker	14 Blade unit
8	Coupling unit	15 Bowl
9	Whisk	

### 4 Before the first use

Thoroughly clean the parts that will come into contact with food before you use the appliance for the first time (see chapter 'Cleaning').

#### Preparing for use

- Cool down hot ingredients before chopping or pouring into the beaker (max. temperature 80 °C).
- Cut large ingredients into pieces of approximately 2 cm before processing them.
- Assemble the appliance properly before plugging it into the wall socket.

### 5 Use the appliance

#### Handblender

- The hand blender is intended for:
- blending fluids, e.g. dairy products, sauces, fruit juices, soups, mixed drinks and shakes.
  - mixing soft ingredients, e.g. pancake batter and mayonnaise.
  - pureeing cooked ingredients, e.g. for making baby food.
- To switch on the appliance, press the on/off button or the turbo speed button.

#### Note

- When you use the turbo speed button, the appliance operates at maximum speed.
- The higher the speed, the shorter the processing time required.
- When you make mayonnaise, add oil little by little for the best and stable result.

#### Mini Chopper (HR1372 only) and extra-large chopper (HR1371/HR1372 only)

The chopper is intended for chopping ingredients such as nuts, meat, onions, hard cheese, boiled eggs, garlic, herbs, dry bread and etc.  
HR1372 only: use the extra-large chopper bowl and the serrated blade unit to crush ice.

#### Caution

- The blades are very sharp! Be very careful when handling the blade unit, especially when removing it from the chopper bowl, when emptying the chopper bowl, and during cleaning.

#### Note

- If the ingredients stick to the wall of the chopper bowl, stop the chopper and then loosen the ingredients by adding liquid or using a spatula.
- For the best results when processing beef, use refrigerated beef cubes.
- Do not process more than 1 batch without interruption. Let the appliance cool down for 5 minutes before you continue processing.

#### Whisk (HR1372 only)

The whisk is intended for whipping cream, whisking egg whites, desserts etc.

#### Tip

- When you beat egg whites, use a large bowl for the best result.
- When you whip cream, use the beaker to avoid splashing.
- To prevent splashing, start at a low speed setting and continue with a higher speed after approx. 1 minute.
- Do not process more than 1 batch without interruption. Let the appliance cool down for 5 minutes before you continue processing.

### 6 Cleaning

Do not immerse the motor unit, the whisk coupling (HR1372 only), the coupling unit of the mini chopper (HR1372 only) and extra-large chopper lid (HR1371/HR1372 only) in water.

#### Caution

- Unplug the appliance before you clean it or release any accessory.
- You can also remove the rubber rings from the chopper bowls for extra thorough cleaning.
- For quick cleaning, pour warm water with some washing-up liquid in the beaker, insert the blender bar or potato masher and let the appliance operate for approximate 10 seconds.

- Unplug the appliance.
- Press the release buttons on the motor unit to remove the accessory you have used.
- Disassemble the accessory.
- See the separate cleaning table at the end of this user manual for further instructions.

### 7 Accessories

You can order a direct-driven mini chopper (under service code number 4203 035 83450) from your Philips dealer or a Philips service centre as an extra accessory for the HR1372, HR1371 and the HR1370. Use the quantities and processing times of the mini chopper for this accessory.

### 8 Storage

- Wind the power cord round the heel of the appliance.
- Store the appliance in a dry place away from direct sunlight or other sources of heat.

### 9 Baby food recipe

Ingredients	Quantity	Speed	Time
Cooked potatoes	50 g	5	60 sec
Cooked chicken	50 g		
Cooked french beans	50 g		
Milk	100 ml		

#### Note

- Always let the appliance cool down to room temperature after each batch you process.

### 10 Guarantee and service

If you need service or information or if you have a problem, please visit the Philips website at [www.philips.com](http://www.philips.com) or contact the Philips Consumer Care Centre in your country (you find its phone number in the worldwide guarantee leaflet). If there is no Consumer Care Centre in your country, go to your local Philips dealer.

### 5

	X	X	✓
	✓	✓	
HR1372	X	X	✓
HR1372	✓	✓	
HR1372	X	X	✓
HR1372, HR1371	X	X	✓
HR1372	✓	✓	
HR1372, HR1371	✓	✓	
	✓	✓	

## Dansk

### 1 Indledning

Tillykke med dit køb, og velkommen til Philips! Hvis du vil have fuldt udbytte af den support, som Philips tilbyder, kan du registrere dit produkt på [www.philips.com/welcome](http://www.philips.com/welcome). Apparatet virker kun, når alle dele er korrekt samlet, og låget er korrekt fastlåst med låseklemmerne.  
Du kan finde opskrifter, du kan bruge med din foodprocessor, på [www.philips.com/kitchen](http://www.philips.com/kitchen).

### 2 Vigtigt

Læs denne brugervejledning omhyggeligt igennem, inden apparatet tages i brug. Gem brugervejledningen til eventuel senere brug.

#### Fare

- Motorenheden må aldrig komme ned i vand eller andre væsker eller skylles under vandhanen.
- Rengør ikke motorenheden i opvaskemaskinen.

#### Advarsel

- Kontroller, om den angivne netspænding på apparatet svarer til den lokale netspænding, før du slutter strømmen til apparatet.
- Brug ikke apparatet, hvis stik, netledning eller andre dele er beskadigede.
- Hvis netledningen beskadiges, må den kun udskiftes af Philips, et autoriseret Philips-serviceværksted eller en tilsvarende kvalificeret fagmand for at undgå enhver risiko.
- Hvis apparatet er beskadiget, skal du altid sikre dig, at du får byttet det til et magen til, ellers vil din garanti være ugyldig.
- Dette apparat må ikke bruges af børn. Hold apparatet og ledningen uden for børns rækkevidde.









