

Dell OptiPlex All-in-One

Stand Installation Guide



Notes, cautions, and warnings

 | **NOTE:** A NOTE indicates important information that helps you make better use of your product.

 | **CAUTION:** A CAUTION indicates either potential damage to hardware or loss of data and tells you how to avoid the problem.

 | **WARNING:** A WARNING indicates a potential for property damage, personal injury, or death.

© 2018 Dell Inc. or its subsidiaries. All rights reserved. Dell, EMC, and other trademarks are trademarks of Dell Inc. or its subsidiaries. Other trademarks may be trademarks of their respective owners.

Contents

1 Before you begin.....	4
Safety instructions.....	4
Before working inside your computer.....	4
Safety precautions.....	5
After working inside your computer.....	5
2 Basic stand for Dell OptiPlex 5260 and 7460 All-in-One.....	6
Installing the basic stand.....	6
Removing the basic stand.....	7
Basic stand tilt.....	8
3 Height adjustable stand for Dell OptiPlex 5260, 7460, and 7760 All-in-One.....	9
Installing the height adjustable stand.....	9
Removing the height adjustable stand.....	10
Height adjustable stand transform.....	12
4 Height adjustable stand with optical disk drive for Dell OptiPlex 5260 and 7460 All-in-One.....	13
Installing the height adjustable stand with optical disk drive.....	13
Removing height adjustable stand with optical disk drive.....	14
Height adjustable stand with optical drive transform.....	16
5 Articulating stand for Dell OptiPlex 5260,7460, and 7760 All-in-One.....	17
Installing the articulating stand.....	17
Removing the Articulating Stand.....	17
Articulating stand tilt transform.....	18
6 Getting help.....	19
Contacting Dell.....	19

Before you begin

Safety instructions

Use the following safety guidelines to protect your computer from potential damage and to ensure your personal safety. Unless otherwise noted, each procedure included in this document assumes that the following conditions exist:

- You have read the safety information that shipped with your computer.
- A component can be replaced or, if purchased separately, installed by performing the removal procedure in reverse order.

⚠ WARNING: Disconnect all power sources before opening the computer cover or panels. After you finish working inside the computer, replace all covers, panels, and screws before connecting to the power source.

⚠ WARNING: Before working inside your computer, read the safety information that shipped with your computer. For additional safety best practices information, see the [Regulatory Compliance Homepage](#)

⚠ CAUTION: Many repairs may only be done by a certified service technician. You should only perform troubleshooting and simple repairs as authorized in your product documentation, or as directed by the online or telephone service and support team. Damage due to servicing that is not authorized by Dell is not covered by your warranty. Read and follow the safety instructions that came with the product.

⚠ CAUTION: To avoid electrostatic discharge, ground yourself by using a wrist grounding strap or by periodically touching an unpainted metal surface at the same time as touching a connector on the back of the computer.

⚠ CAUTION: Handle components and cards with care. Do not touch the components or contacts on a card. Hold a card by its edges or by its metal mounting bracket. Hold a component such as a processor by its edges, not by its pins.

⚠ CAUTION: When you disconnect a cable, pull on its connector or on its pull-tab, not on the cable itself. Some cables have connectors with locking tabs; if you are disconnecting this type of cable, press in on the locking tabs before you disconnect the cable. As you pull connectors apart, keep them evenly aligned to avoid bending any connector pins. Also, before you connect a cable, ensure that both connectors are correctly oriented and aligned.

ⓘ NOTE: The color of your computer and certain components may appear differently than shown in this document.

Before working inside your computer

To avoid damaging your computer, perform the following steps before you begin working inside the computer.

- 1 Ensure that you follow the [Safety Instruction](#).
- 2 Ensure that your work surface is flat and clean to prevent the computer cover from being scratched.
- 3 Turn off your computer.
- 4 Disconnect all network cables from the computer.

⚠ CAUTION: To disconnect a network cable, first unplug the cable from your computer and then unplug the cable from the network device.

- 5 Disconnect your computer and all attached devices from their electrical outlets.
- 6 Press and hold the power button while the computer is unplugged to ground the system board.

ⓘ NOTE: To avoid electrostatic discharge, ground yourself by using a wrist grounding strap or by periodically touching an unpainted metal surface at the same time as touching a connector on the back of the computer.

Safety precautions

The safety precautions chapter details the primary steps to be taken before performing any disassembly instructions.

Observe the following safety precautions before you perform any installation or break/fix procedures involving disassembly or reassembly:

- Turn off the system and all attached peripherals.
- Disconnect the system and all attached peripherals from AC power.
- Disconnect all network cables, telephone, and telecommunications lines from the system.
- Use an ESD field service kit when working inside any desktop to avoid electrostatic discharge (ESD) damage.
- After removing any system component, carefully place the removed component on an anti-static mat.
- Wear shoes with non-conductive rubber soles to reduce the chance of getting electrocuted.

Standby power

Dell products with standby power must be unplugged before you open the case. Systems that incorporate standby power are essentially powered while turned off. The internal power enables the system to be remotely turned on (wake on LAN) and suspended into a sleep mode and has other advanced power management features.

Unplugging, pressing and holding the power button for 15 seconds should discharge residual power in the system board. .

After working inside your computer

After you complete any replacement procedure, ensure that you connect any external devices, cards, and cables before turning on your computer.

- 1 Connect any telephone or network cables to your computer.

 **CAUTION: To connect a network cable, first plug the cable into the network device and then plug it into the computer.**

- 2 Connect your computer and all attached devices to their electrical outlets.
- 3 Turn on your computer.
- 4 If required, verify that the computer works correctly by running **ePSA diagnostics**.

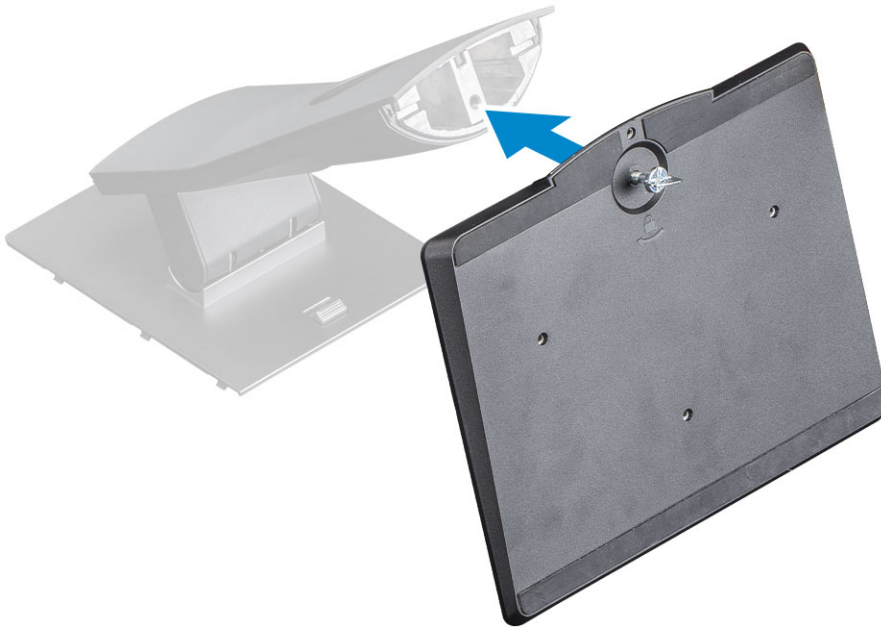
Basic stand for Dell OptiPlex 5260 and 7460 All-in-One

Topics:

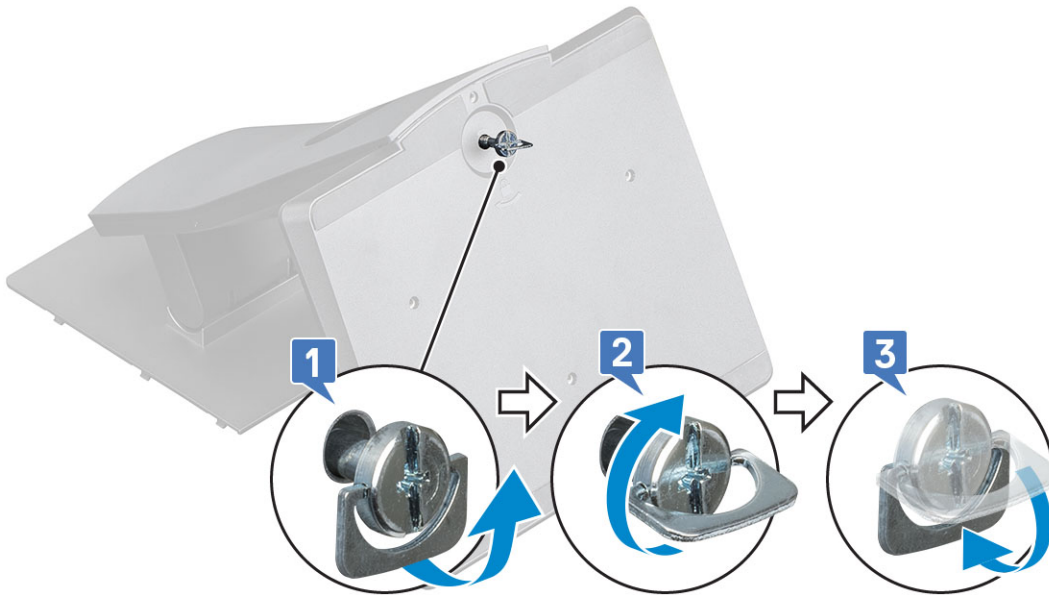
- [Installing the basic stand](#)
- [Removing the basic stand](#)
- [Basic stand tilt](#)

Installing the basic stand

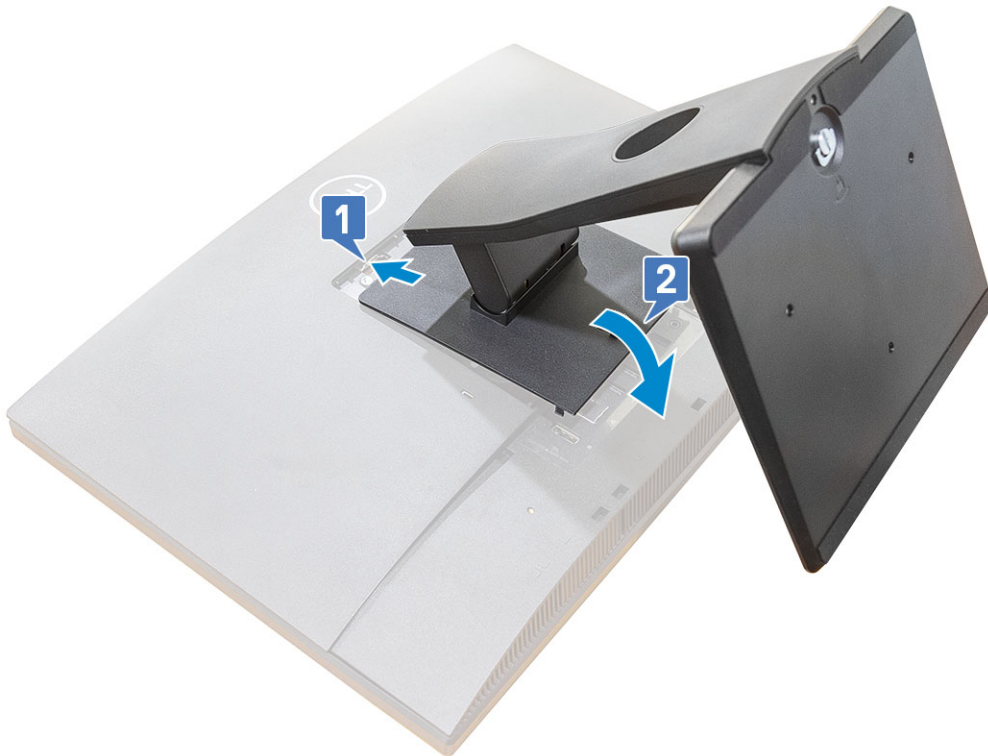
- 1 Follow the procedure in [Before working inside your computer](#).
- 2 Insert the stand base into the slot on the basic stand.



- 3 Tighten the captive screw to secure the stand base to the basic stand.



- 4 To install the basic stand onto the computer:
 - a Align the tabs on the basic stand with the slots on the back cover [1].
 - b Snap the basic stand into place on the back cover [2].

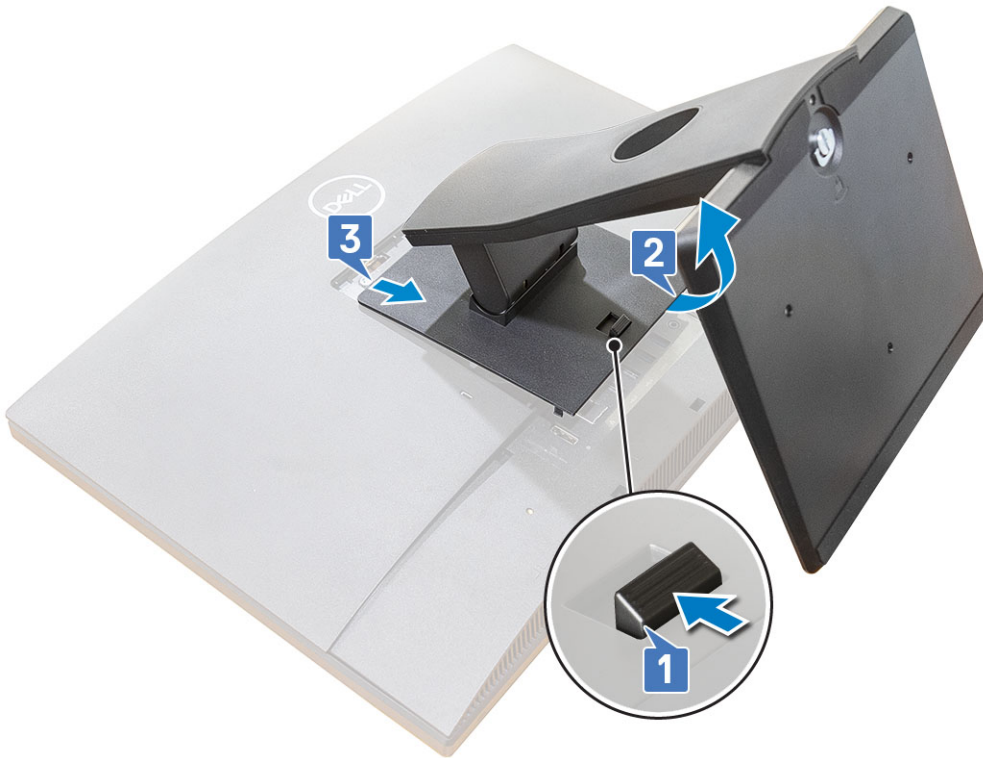


- 5 Follow the procedure in [After working inside your computer](#).

Removing the basic stand

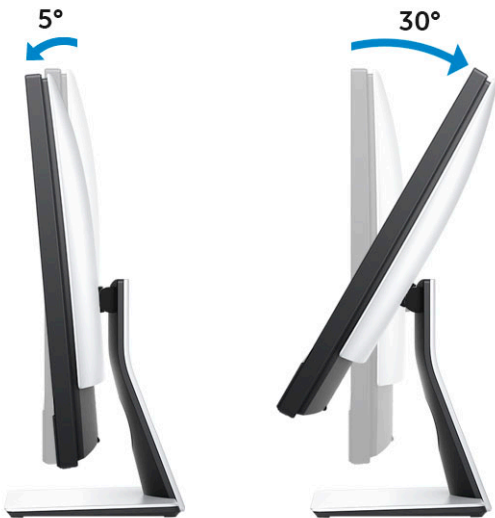
- 1 Follow the procedure in [Before working inside your computer](#).
- 2 To avoid damaging the display, place the system on a flat, soft, and clean surface.
- 3 To remove the basic stand:
 - a Slide the release tab forward to release the basic stand from the back cover [1].
 - b Hold the tab in the release position and lift the basic stand upward [2].

- c Slide and lift the basic stand off the back cover [3].



- 4 Follow the procedure in [After working inside your computer](#).

Basic stand tilt



Height adjustable stand for Dell OptiPlex 5260, 7460, and 7760 All-in-One

Topics:

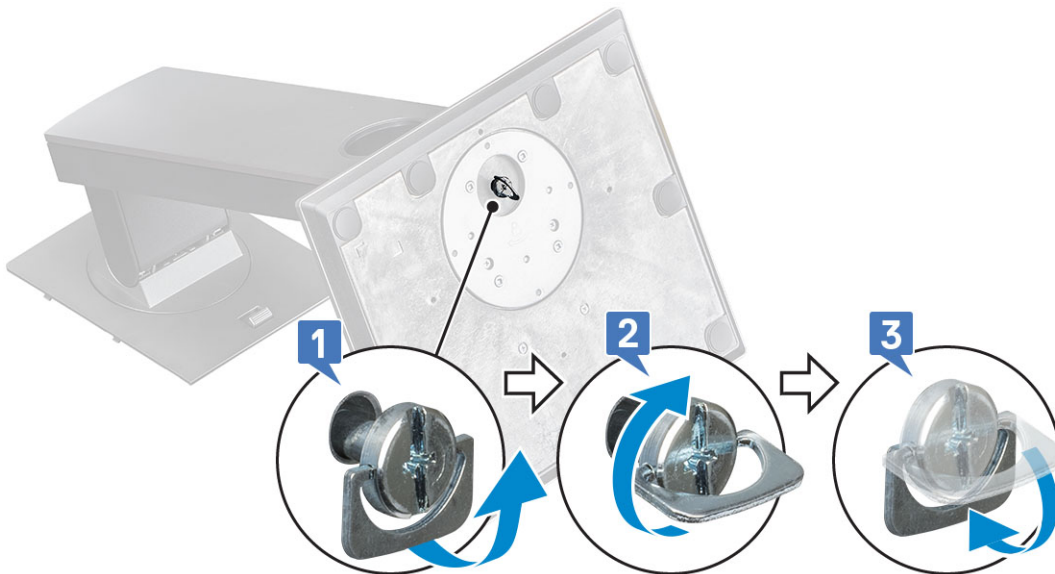
- [Installing the height adjustable stand](#)
- [Removing the height adjustable stand](#)
- [Height adjustable stand transform](#)

Installing the height adjustable stand

- 1 Follow the procedure in [Before working inside your computer](#).
- 2 Insert the stand base into the slot on the height adjustable stand.



- 3 Tighten the captive screw to secure the stand base to the height adjustable stand.



- 4 To install the height adjustable stand onto the computer:
 - a Align the tabs on the height adjustable stand with the slots on the back cover [1].
 - b Snap the height adjustable stand into place on the back cover [2].



- 5 Follow the procedure in [After working inside your computer](#).

Removing the height adjustable stand

- 1 Follow the procedure in [Before working inside your computer](#).
- 2 To avoid damaging the display, place the system on a flat, soft, and clean surface.
- 3 To remove the height adjustable stand:
 - a Slide the release tab forward to release the height adjustable stand from the back cover [1].

- b Hold the tab in the release position and lift the height adjustable stand upward [2].
- c Slide and lift the height adjustable stand off the back cover [3].



- 4 Follow the procedure in [After working inside your computer](#).

Height adjustable stand transform



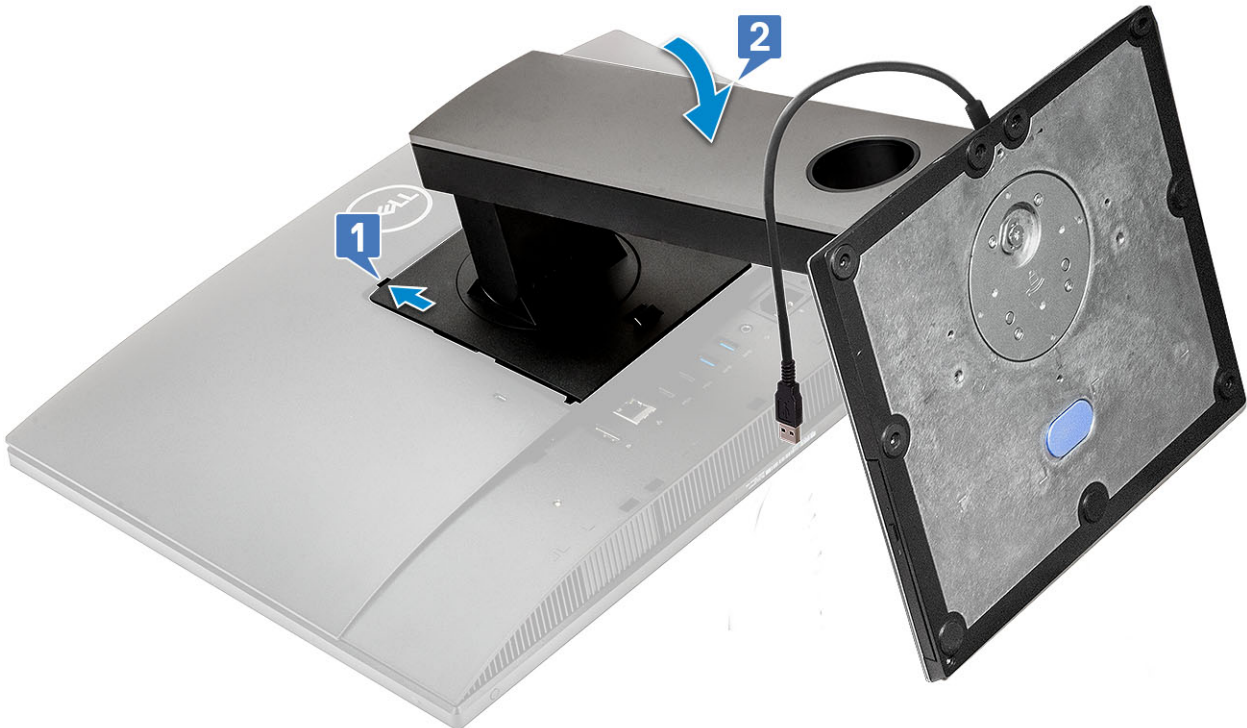
Height adjustable stand with optical disk drive for Dell OptiPlex 5260 and 7460 All-in-One

Topics:

- [Installing the height adjustable stand with optical disk drive](#)
- [Removing height adjustable stand with optical disk drive](#)
- [Height adjustable stand with optical drive transform](#)

Installing the height adjustable stand with optical disk drive

- 1 Follow the procedure in [Before working inside your computer](#).
- 2 To install the height adjustable stand:
 - a Align the tabs on the height adjustable stand with the slots on the back cover [1].
 - b Snap the height adjustable stand into place on the back cover [2].



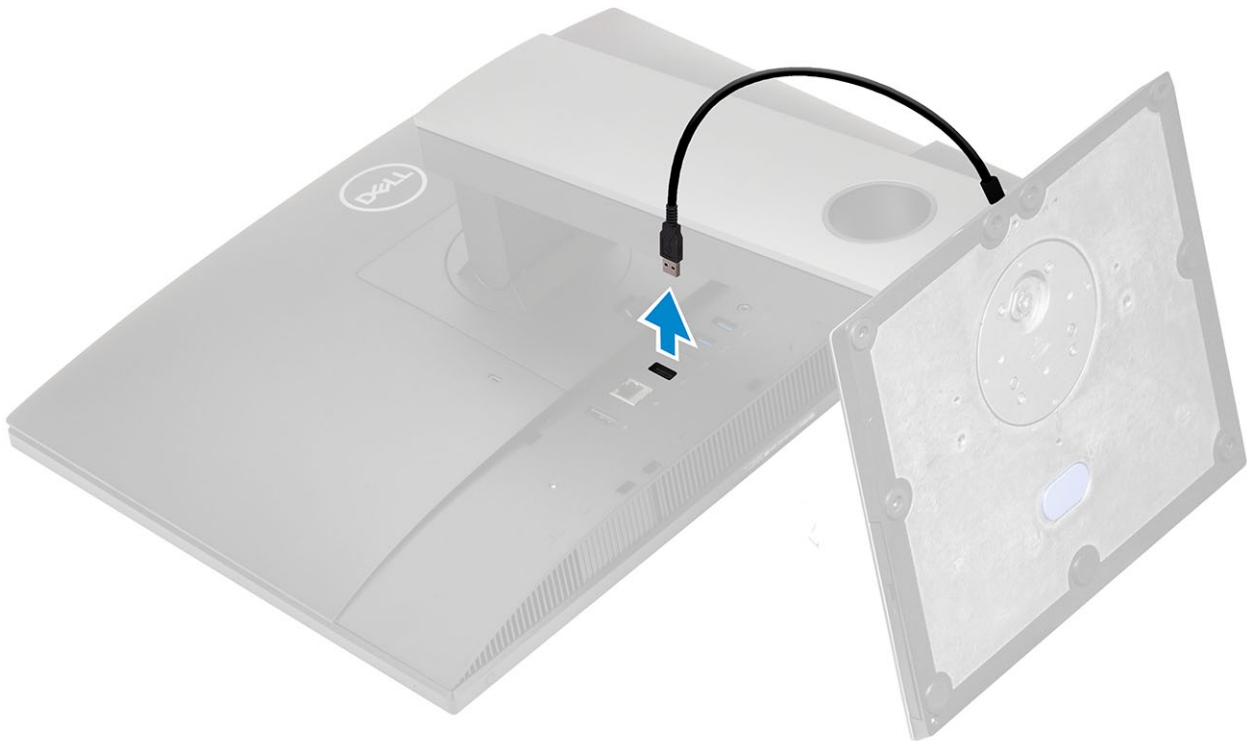
- 3 Connect the optical drive cable to the USB slot on the back cover.



- 4 Follow the procedure in [After working inside your computer](#).

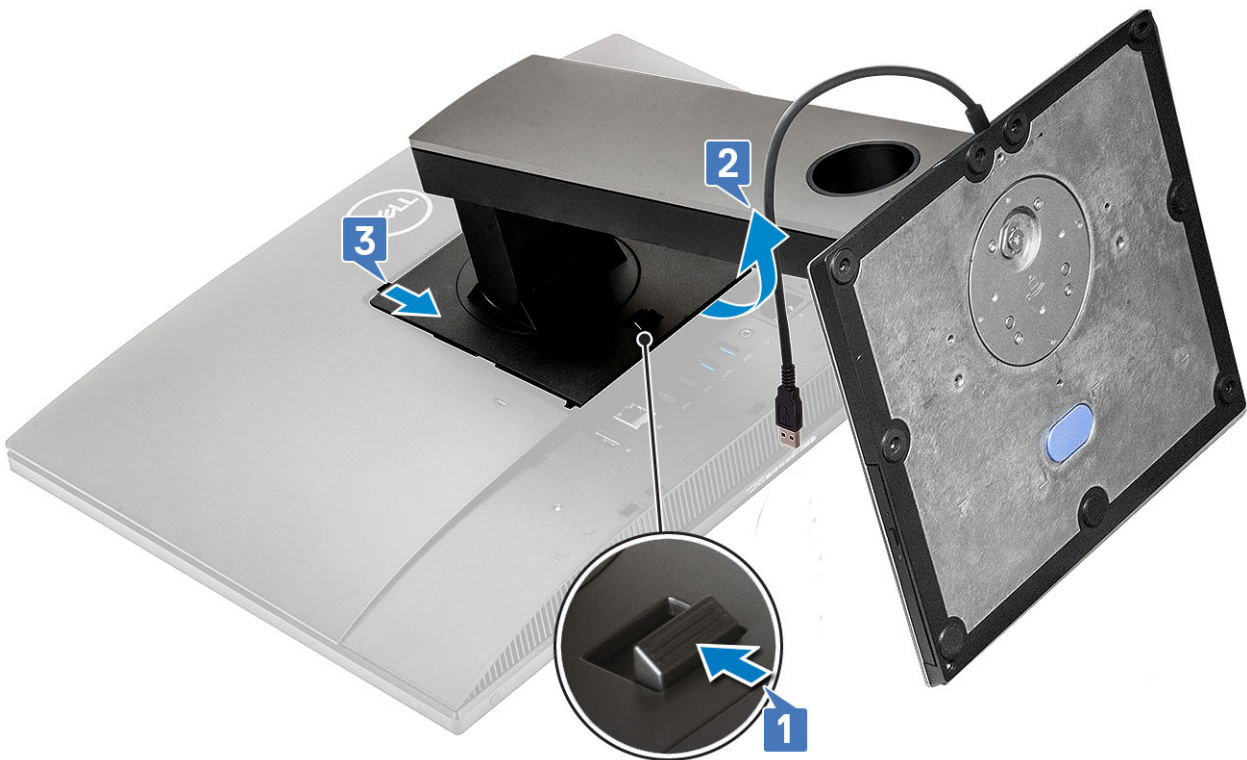
Removing height adjustable stand with optical disk drive

- 1 Follow the procedure in [Before working inside your computer](#).
- 2 To avoid damaging the display, place the system on a flat, soft, and clean surface.
- 3 Disconnect the optical drive cable from the USB slot on the back cover.

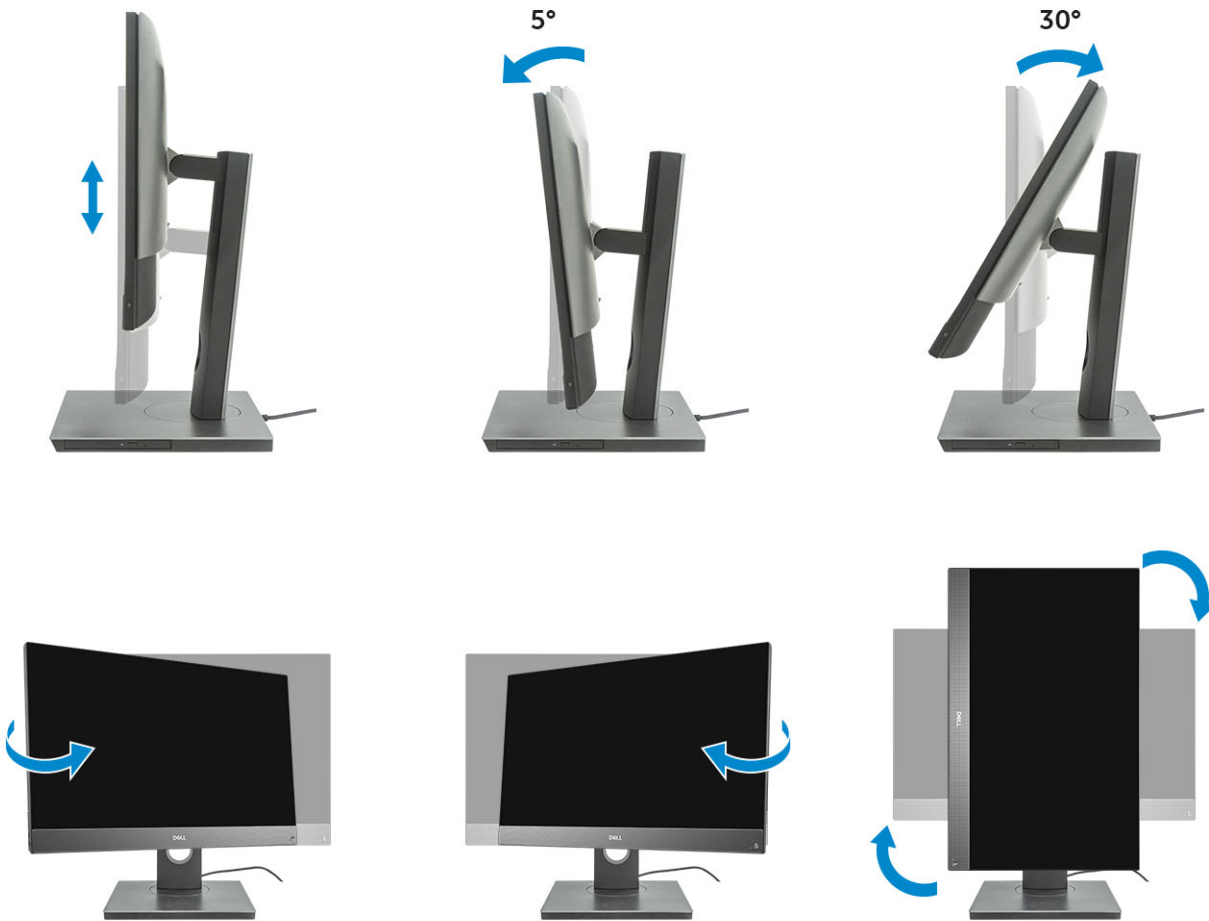


4 To remove the height adjustable stand:

- a Slide the release tab forward to release the height adjustable stand from the back cover [1].
- b Hold the tab in the release position and lift the height adjustable stand upward [2].
- c Slide and lift the height adjustable stand off the back cover [3].



Height adjustable stand with optical drive transform



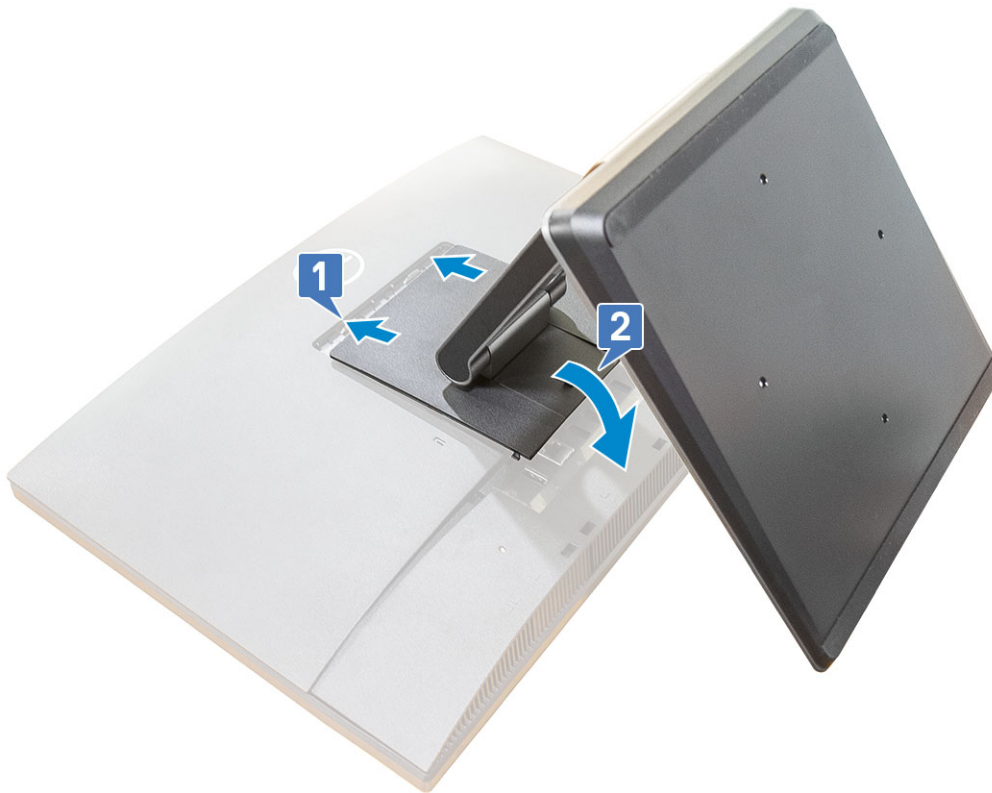
Articulating stand for Dell OptiPlex 5260,7460, and 7760 All-in-One

Topics:

- [Installing the articulating stand](#)
- [Removing the Articulating Stand](#)
- [Articulating stand tilt transform](#)

Installing the articulating stand

- 1 Follow the procedure in [Before working inside your computer](#).
- 2 To install the articulating stand:
 - a Align the tabs on the articulating stand with the slots on the back cover [1].
 - b Snap the articulating stand into place on the back cover [2].

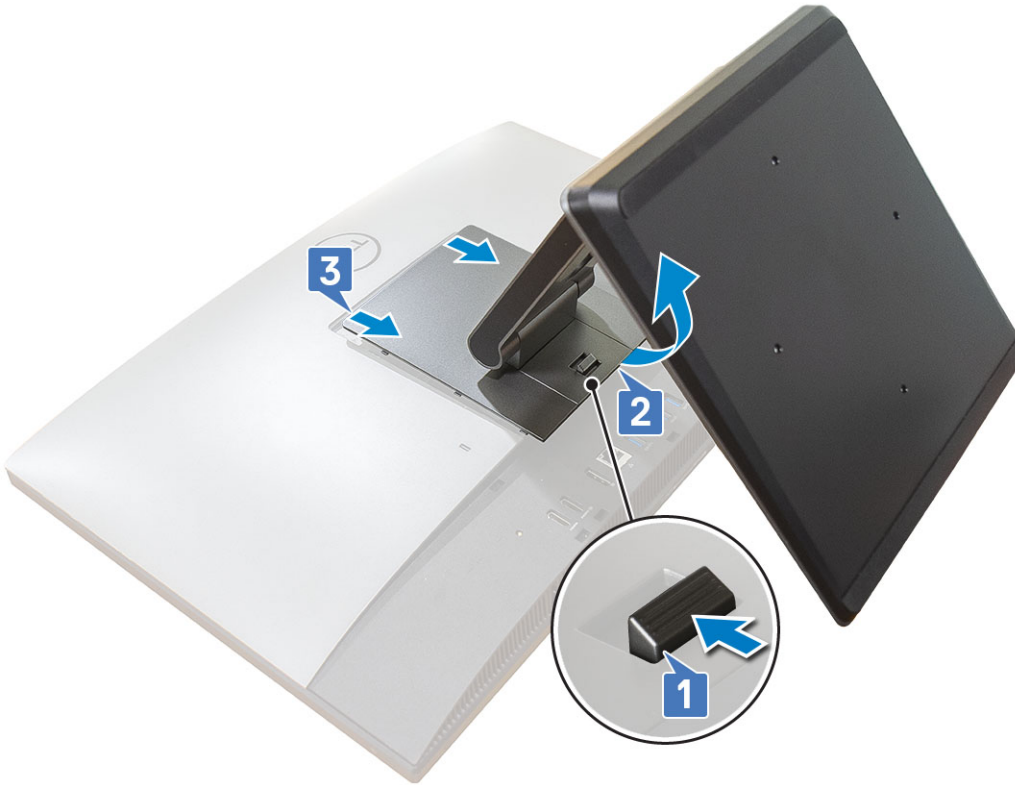


- 3 Follow the procedure in [After working inside your computer](#).

Removing the Articulating Stand

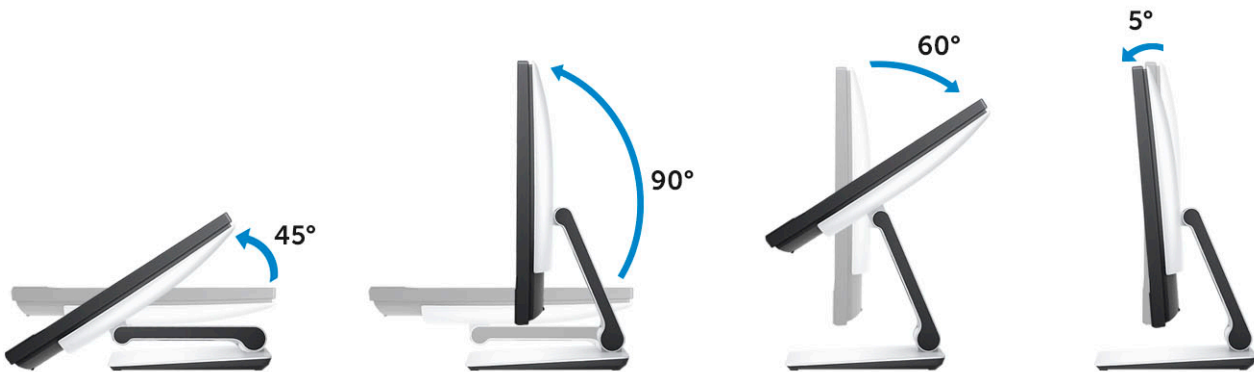
- 1 Follow the procedure in [Before working inside your computer](#).
- 2 To avoid damaging the display, place the system on a flat, soft, and clean surface.

- 3 To remove the articulating stand:
 - a Slide the release tab forward to release the articulating stand from the back cover [1].
 - b Hold the tab in the release position and lift the articulating stand upward [2].
 - c Slide and lift the articulating stand off the back cover [3].



- 4 Follow the procedure in [After working inside your computer](#).

Articulating stand tilt transform



Getting help

Contacting Dell

① **NOTE:** If you do not have an active Internet connection, you can find contact information on your purchase invoice, packing slip, bill, or Dell product catalog.

Dell provides several online and telephone-based support and service options. Availability varies by country and product, and some services may not be available in your area. To contact Dell for sales, technical support, or customer service issues:

- 1 Go to **Dell.com/support**.
- 2 Select your support category.
- 3 Verify your country or region in the **Choose a Country/Region** drop-down list at the bottom of the page.
- 4 Select the appropriate service or support link based on your need.