

# TechChoice® Solutions



TechChoice® structured cabling solutions combine the reliability and ease of installation you'd expect from Legrand | Ortronics with performance and rugged construction to provide a cost-effective option for communications technicians. Category 5e and 6 products are third party component tested to meet Category 5e and 6 component specifications for TIA/EIA-568-B.2 and ISO11801-2002.

## FEATURED PRODUCTS

Keystone Jacks  
& Modules

Faceplates

Patch Panels

Patch Cords

Surface  
Mount Boxes

Rack Mount  
Fiber Cabinets



TechChoice  
Jacks  
**P.202**



**P.202**  
Keystone  
Jacks



**P.202**  
Fiber  
Modules



**P.203**  
Multimedia  
Modules



**P.204**  
VGA Faceplates



**P.204**  
Plastic  
Faceplates



**P.204**  
Stainless  
Steel Faceplates



**P.205**  
Category 6 &  
Category 5e  
Patch Panels



**P.205**  
Patch  
Panel Kit



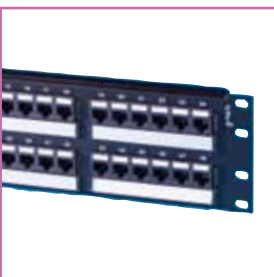
**P.206**  
Category 6 &  
Category 5e  
Patch Cords



**P.206**  
Surface  
Mount Boxes



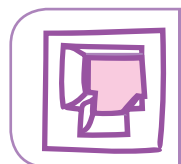
**P.207**  
Fiber Splice  
Cabinets



TechChoice  
Patch Panels  
**P.205**



TechChoice  
Fiber Cabinets  
**P.207**



## KEYSTONE JACKS & MODULES

TechChoice keystone jacks and modules feature an easy-to-follow universal wiring label and support standard termination using a 110-impact tool. The keystone footprint allows for the greatest flexibility in installation scheduling because its rear insertion into the faceplate allows the technician to complete the termination before, during and after the construction process.

### Keystone Jacks

OR-KS6



OR-KS5E



OR-KSRJ25



OR-KSICON



PART NO. Single Pack	PART NO. Pack of 25	DESCRIPTION
OR-KS6A	OR-KS6	Category 6, 8-position, T568A/B wiring, icon compatible.
OR-KS5EA	OR-KS5E	Category 5e, 8-position, T568A/B wiring, icon compatible.
OR-KSRJ25A	OR-KSRJ25	RJ25, 6 position jack, USOC wiring, icon compatible
	OR-KSICON	TechChoice keystone icon, 2 sided voice/data, package of 25

Add tailcode to end of part number (example: OR-KS6-42).

WM indicates Wiremold color match.

fog white	-00	-13	-36	-42	-88	-99	-43	-44	-45	-78
	WM				WM	WM				WM
RJ25 Color Choices							Category 5e and 6 Color Choices			

-00=Black; -13=Electrical ivory; -36=Blue; -42=Red; -88=White; -99=Wiremold® ivory; -43=Orange; -44=Yellow; -45=Green; -78=Gray. Standard color is fog white, requiring no tail code.

### Fiber Keystone Modules

OR-KSST



R-KSSC



OR-KSLC



OR-KSMTRJ



PART NO.	DESCRIPTION
OR-KSST	1-ST simplex multimode, phosphor-bronze alignment sleeves, 180° exit. Fog white. Sold with dust cover
OR-KSSC	1-SC simplex multimode, phosphor-bronze alignment sleeves, 180° exit. Fog white. Sold with dust cover
OR-KSLC	1-LC (2 fibers) multimode, phosphor-bronze alignment sleeves, 180° exit. Fog white. Sold with dust cover
OR-KSMTRJ	1 MT-RJ (2 fibers) multimode, feed-through, 180° exit, flush. Fog white. Sold with dust cover

NOTE: For Wiremold Ivory, add tail code of -99 to end of part number (example OR-KSST-99) Sold individually.

# KEYSTONE JACKS & MODULES

## Multimedia Keystone Modules

OR-KSHDMI



OR-KSSV



OR-KSSVIDC



OR-KSRCAR



OR-KSRCAG



OR-KSRCABL



OR-KSRCAY



OR-KSRCAW



OR-KSRCAB



OR-KS35ST



OR-KS35STST



OR-KS14ST



OR-KSUSBAA



OR-KSUSBAB



OR-KSBP



OR-KSBNC75



OR-KSBNC



OR-KSFCN



OR-KSFCNR



OR-KSS2210



OR-KSB10



PART NO.	DESCRIPTION
OR-KSHDMI	HDMI, female to female, 19pin
OR-KSSV	S-Video to 110
OR-KSSVIDC	S-Video, female to female
OR-KSRCAR	RCA red to 110
OR-KSRCAG	RCA green to 110
OR-KSRCABL	RCA blue to 110
OR-KSRCAY	RCA yellow to 110
OR-KSRCAW	RCA white to 110
OR-KSRCAB	RCA black to 110
OR-KS35ST	3.5mm, stereo jack, female to female
OR-KS35STST	3.5mm, stereo jack, female to screw term
OR-KS14ST	1/4" stereo jack, female to solder
OR-KSUSBAA	USB 2.0 A-A, female to female
OR-KSUSBAB	USB 2.0 A-B, female to female
OR-KSBP	Binding post, set of 2
OR-KSBNC75	BNC 75 ohm, female to female, 75 ohm
OR-KSBNC	BNC 50 ohm, female to female, 50 ohm
OR-KSFCN	F Conn 75 ohm, female to female
OR-KSFCNR	F Conn 75 ohm, recessed, female to female
OR-KSS2210	Series II bezel, 2port, TechChoice keystone, 1 unit, 10pk
OR-KSB10	Blank, package of ten

NOTE: Standard color is fog white.  
For other colors, contact sales.

# FACEPLATES

OR-KSFP4V110



## VGA Faceplates

VGA Faceplates are available in high impact 94V-0 rated thermoplastic. The single gang version includes one integrated VGA connector. The double gang version includes two VGA connectors.

PART NO.	DESCRIPTION
OR-KSFP4V110	Single-gang, holds four keystones, VGA to 110
OR-KSFP4VFT	Single-gang, holds four keystones, VGA with crimp pins
OR-KSFP8V110	Double-gang, holds eight keystones, two VGA to 110
OR-KSFP8VFT	Double-gang, holds eight keystones, two VGA with crimp pins

NOTE: Standard color is fog white. Add -13 for electrical ivory.

OR-KSFP2



## Faceplates

TechChoice® faceplates are available in high impact 94V-0 rated thermoplastic and stainless steel, with a variety of port capacities to match your workstation applications. All faceplates allow for a flush jack finish.

## Plastic Faceplates with Label Fields

PART NO.	DESCRIPTION
OR-KSFP1	Single gang, holds one keystone
OR-KSFP2	Single gang, holds two keystones
OR-KSFP3	Single gang, holds three keystones
OR-KSFP4	Single gang, holds four keystones
OR-KSFP6	Single gang, holds six keystones
OR-KSFP8	Dual gang, holds eight keystones
OR-KSFP12	Dual gang, holds 12 keystones

NOTE: Standard color is fog white. Add -13 for electrical ivory, -88 for white or -99 for Wiremold ivory.

## Stainless Steel Faceplates with Label Fields

PART NO.	DESCRIPTION
OR-KSSS1	Single gang, holds one keystone
OR-KSSS2	Single gang, holds two keystones
OR-KSSS3	Single gang, holds three keystones
OR-KSSS4	Single gang, holds four keystones
OR-KSSS6	Single gang, holds six keystones
OR-KSSS8	Dual gang, holds eight keystones
OR-KSSS12	Dual gang, holds 12 keystones

## Plastic Faceplates without Label Fields

PART NO.	DESCRIPTION
OR-KSFPR1	Single gang with one keystone opening
OR-KSFPR2	Single gang with two keystone openings
OR-KSFPR3	Single gang with three keystone openings
OR-KSFPR4	Single gang with four keystone openings
OR-KSFPR6	Single gang with six keystone openings

NOTE: Standard color is fog white, add -13 for electrical ivory, -88 for white, or -99 for Wiremold Ivory

## Plastic Rectangular GFCI & 106 Frames

PART NO.	DESCRIPTION
OR-KSDS2	Stylistic rectangular frame with 2 keystone openings
OR-KSDS3	Stylistic rectangular frame with 3 keystone openings
OR-KSDS4	Stylistic rectangular frame with 4 keystone openings
OR-KS106S2	106 style frame with 2 keystone openings
OR-KS106S4	106 style frame with 4 keystone openings

NOTE: Standard color is fog white, add -13 for electrical ivory, -88 for white, or -99 for Wiremold Ivory

PART NO.	DESCRIPTION
OR-KSS2210	Series II bezel, 2 port TechChoice Keystone, 1 unit, 10 pack

NOTE: Standard color is fog white, add -13 for electrical ivory, -88 for white, or -99 for Wiremold Ivory

OR-KSSS3



OR-KSFPR2



OR-KSD4



OR-KS106S4



OR-KSS2210



## FACEPLATES

### Furniture Plates

#### Furniture Plates

OR-40300630



PART NO.	DESCRIPTION
OR-40300630	Holds four keystones, two-piece base and cover, adjustable to fit a range of common furniture openings (2.67"-2.75" x 1.34"-1.41") for 0.065" thick material

NOTE: Standard color is fog white. Add -00 for black.

## PATCH PANELS

OR-SP6U48



#### Patch Panels

24- and 48-port TechChoice® patch panels are available in the traditional multi-port panel format with 6-port modules for Cat 6 and Cat 5e. Patch panel kits are also available to support individual keystone jacks: Cat 6, Cat 5e and multimedia (sold separately).

OR-SPA6U48



OR-SP5EU24



OR-SPKSU24



OR-SPAKSU48



#### Category 6 with 6-port modules

PART NO.	DESCRIPTION
OR-SP6U24	24-port, T568A/B, height 1.75", 1 rack unit
OR-SP6U48	48-port, T568A/B, height 3.5", 2 rack units

#### Category 6 angled with 6-port modules

PART NO.	DESCRIPTION
OR-SPA6U24	24-port, angled, T568A/B, height 1.75", 1 rack unit
OR-SPA6U48	48-port, angled, T568A/B, height 3.5", 2 rack units

#### Category 5e with 6-port modules

PART NO.	DESCRIPTION
OR-SP5EU24	24-port, T568A/B, height 1.75", 1 rack unit
OR-SP5EU48	48-port, T568A/B, height 3.5", 2 rack units

#### Category 5e angled with 6-port modules

PART NO.	DESCRIPTION
OR-SPA5EU24	24-port, angled, T568A/B, height 1.75", 1 rack unit
OR-SPA5EU48	48-port, angled, T568A/B, height 3.5", 2 rack units

#### Patch Panel Kit (accepts KS series keystone jacks & modules)

PART NO.	DESCRIPTION
OR-SPKSU24	24-port, height 1.75", 1 rack unit
OR-SPKSU48	48-port, height 3.5", 2 rack units
OR-SPAKSU24	24-port, angled, height 1.75", 1 rack unit
OR-SPAKSU48	48-port, angled, height 1.75", 2 rack units

## PATCH CORDS

OR-SPC5E05-05



### Modular Patch Cords

TechChoice® patch cords offer a slim design for high density applications and come factory terminated with a snagless boot. Each cable is pre-tested for component performance.

OR-SPC607-00



### Category 6

PART NO. Single Pack	PART NO. 10 Packs	DESCRIPTION
OR-SPCA603-XX	OR-SPC603-XX	Four pair stranded patch cord PVC, length 3ft
OR-SPCA605-XX	OR-SPC605-XX	Four pair stranded patch cord PVC, length 5ft
OR-SPCA607-XX	OR-SPC607-XX	Four pair stranded patch cord PVC, length 7ft
OR-SPCA610-XX	OR-SPC610-XX	Four pair stranded patch cord, PVC length 10ft
OR-SPCA615-XX	OR-SPC615-XX	Four pair stranded patch cord, PVC length 15ft
OR-SPCA625-XX	OR-SPC625-XX	Four pair stranded patch cord, PVC length 25ft

NOTE: Available in the following colors: -XX = -00 Black; -02 Red; -04 Yellow; -05 Green; -06 Blue; -08 Gray; -09 White.

Add tailcode to end of part number [example: OR-SPC603-02].

### Category 5e

PART NO. Single Pack	PART NO. 10 Packs	DESCRIPTION
OR-SPCA5E03-XX	OR-SPC5E03-XX	Four pair stranded patch cord PVC, length 3ft
OR-SPCA5E05-XX	OR-SPC5E05-XX	Four pair stranded patch cord PVC, length 5ft
OR-SPCA5E07-XX	OR-SPC5E07-XX	Four pair stranded patch cord PVC, length 7ft
OR-SPCA5E10-XX	OR-SPC5E10-XX	Four pair stranded patch cord PVC, length 10ft
OR-SPCA5E15-XX	OR-SPC5E15-XX	Four pair stranded patch cord PVC, length 15ft
OR-SPCA5E25-XX	OR-SPC5E25-XX	Four pair stranded patch cord PVC, length 25ft

NOTE: Available in the following colors: -XX = -00 Black; -02 Red; -04 Yellow; -05 Green; -06 Blue; -08 Gray; -09 White.

Add tailcode to end of part number [example: OR-SPC603-02].

## SURFACE MOUNT BOXES

OR-KSSMB2



### Surface Mount Boxes

TechChoice high impact surface mount boxes accommodate two-, four- or six- port keystone requirements. They are compatible with the Wiremold® Eclipse range of solutions, or can easily be surface installed with supplied screws or double-sided tape. Designation strips and clear covers included.

OR-KSSMB4



OR-KSSMB6



PART NO.	DESCRIPTION
OR-KSSMB2	Holds two keystones, 2.42" x 2.18" x 1.16"
OR-KSSMB4	Holds four keystones, 4.78" x 3.6" x 1.14"
OR-KSSMB6	Holds six keystones, 6.76" x 3.6" x 1.14"

NOTE: Available in fog white. Product dimensions are listed by length, width and height.



## RACK MOUNT FIBER CABINETS

Ortronics® TechChoice rack mount fiber enclosures are designed to offer an economical solution for fiber patching required in LAN and campus wiring environments. These enclosures are used in conjunction with the Ortronics OFP series adapter panels or Momentum® 2 series cassettes to provide a complete fiber cross connect patching solution.

OR-EC01U-C



OR-EC02U-C



OR-EC03U-C



OR-EC04U-C



NEW

### Fiber Patch Cabinets

All enclosures are supplied with internal bend limiting spools, cable management bend limiters, a fixed front cassette/adapter panel mounting bracket and split removable top covers. The enclosures will accept two, six, ten and twelve splice trays per rack unit, respectively. The hardware package also includes rack mount screws and a data label.\*

PART NO.

DESCRIPTION



OR-EC01U-C

1 rack unit, black, holds three adapter panels, two splice trays and fixed cassette/adapter panel bracket

OR-EC02U-C

2 rack units, black, holds six adapter panels, four splice trays and fixed cassette/adapter panel bracket

OR-EC03U-C

3 rack units, black, holds nine adapter panels, six splice trays and fixed cassette/adapter panel bracket

OR-EC04U-C

4 rack units, black, holds 12 adapter panels, eight splice trays and fixed cassette/adapter panel bracket

OR-EC02U-S



OR-EC04U-S



NEW

### Fiber Splice Cabinets

PART NO.

DESCRIPTION



OR-EC02U-S

TechChoice 2U Rack Mount Fiber Splice Enclosure, Holds 12 splice trays, Black

OR-EC04U-S

TechChoice 4U Rack Mount Fiber Splice Enclosure, Holds 32 splice trays, Black