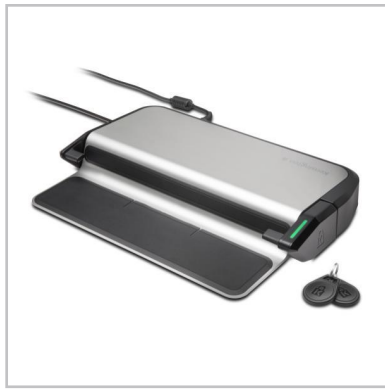


## LD4650P Single-User USB-C 10Gbps Dual 1080p Dock w/ K-Fob™ Smart Lock - 60W PD - Windows

USB-C Docking with Next Gen Locking

K38400eu



### Product Description

The LD4650P Single-User USB-C Dock with K-Fob™ Smart Lock combines Kensington's thoroughly tested universal USB-C docking technology with next generation encrypted digital laptop locking technology to deliver a game-changing 2-in-1 docking and locking solution for Windows users. Get more compatibility and productivity while reducing laptop theft and improving compliance with corporate security protocols. Secures thin and light laptops 11-15" in size, including models from Dell, HP, Lenovo and other manufacturers.

### Shipping Information

Warranty Period 12

### General information

Recycled % 0

### Features

- Best for: USB-C Laptops & Ultrabooks that support Power Delivery and Monitors that support up to 1080p
- Connection technology: USB-C Alt Mode
- USB-C power delivery: Supports USB-C PD 3.0 (60W of laptop charging)
- Compatibility: Windows 10
- No. of monitors supported: 2
- Video output: 2 x DisplayPort++
- Maximum resolution supported: Single monitor (2560 x 1440 @ 60Hz) and Dual monitors (1920 x 1080 @ 60Hz)
- Plug & play installation without need for drivers or downloads
- System requirements: Host device must support Power Delivery and DisplayPort Alt mode over USB-C
- Warranty: 3 Years
- Apple M1 - While this docking station will work with the M1 MacBook, only a single video output is supported. For multi-monitor support on your M1 MacBook, see our Hybrid USB-C DisplayLink docking stations (e.g.: SD4700P, SD4750P, SD4780P or SD4900P) or USB-A DisplayLink adapters (DisplayPort K33989, HDMI K33988, DVI-I K33974).

### Specifications

- |   |                                      |
|---|--------------------------------------|
| • <b>Connection technology</b> USB-C Alt Mode | • <b>Maximum resolution</b> 1080p    |
| • <b>Driverless</b> Yes                       | • <b>Power delivery</b> 60W          |
| • <b>Number of Screen Outputs</b> 2           | • <b>Operating system(s)</b> Windows |
| • <b>Video ports</b> DisplayPort++            | • <b>Number of USB ports</b> 4       |