



Philips  
LCD monitor with  
PowerSensor

**B Line**  
25" (63.4 cm)  
1920 x 1200 (WUXGA)

**252B9**



## Clear vision, beyond boundaries

Expand beyond boundaries with the new 16:10 frameless design Philips B Line monitor. Loaded with features to improve productivity and sustainability, this monitor takes it to the next level.

### Designed for sustainability

- PowerSensor saves up to 70% energy costs
- Zero power consumption with 0 watt hard switch
- 100% recycled packing material

### Excellent performance

- 16:10 aspect ratio for more vertical screen height
- IPS technology for full colours and wide viewing angles

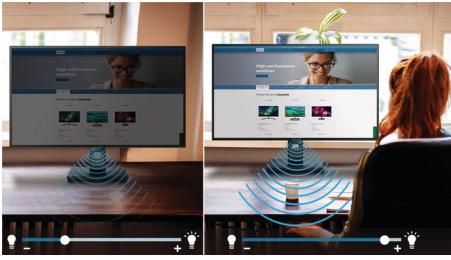
### Designed for the way you work

- SmartErgoBase enables user-friendly ergonomic adjustments
- VESA mount allows for the perfect setup
- Less eye fatigue with Flicker-Free technology
- LowBlue Mode for easy-on-the-eyes productivity
- EasyRead mode for a paper-like reading experience

# PHILIPS

# Highlights

## PowerSensor

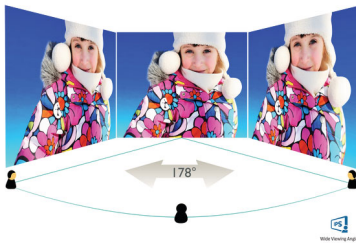


PowerSensor is a built-in 'people sensor' that transmits and receives harmless infrared signals to determine if the user is present and automatically reduces monitor brightness when the user steps away from the desk, cutting energy costs by up to 70 percent and prolonging monitor life.

## Zero power consumption

At the flick of the 0 watt hard switch, which is conveniently located at the back of the monitor, you can completely cut off your monitor from AC power. This results in zero power consumption, reducing your carbon footprint even further

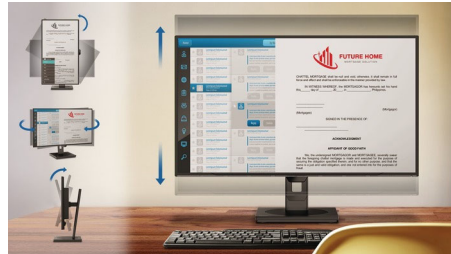
## IPS technology



IPS displays use advanced technology that gives you extra-wide viewing angles of 178/178 degrees, making it possible to view the display from almost any angle — even in 90-degree Pivot mode! Unlike standard TN panels, IPS displays gives you remarkably crisp images with

vivid colours, making it ideal not only for Photos, films and web browsing, but also for professional applications that demand colour accuracy and consistent brightness at all times.

## SmartErgoBase



The SmartErgoBase is a monitor base that delivers ergonomic display comfort and provides cable management. The user-friendly height, swivel, tilt and rotation angle adjustments of the base allow the monitor to be positioned for maximum comfort to help ease the physical strains of a long workday. In addition, cable management reduces cable clutter and keeps the workspace neat and professional.

## VESA mount

VESA pattern guarantees compatibility with hundreds of innovative mounting solutions.

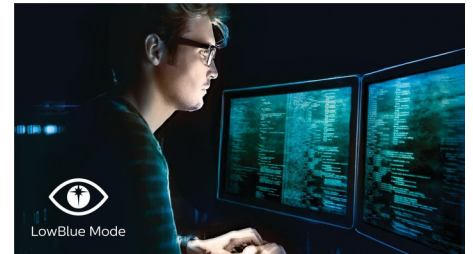
## Flicker-Free technology



Due to the way brightness is controlled on LED-backlit screens, some users experience flicker on their screen which causes eye

fatigue. Philips Flicker-Free technology applies a new solution to regulate brightness and reduce flicker for more comfortable viewing.

## LowBlue Mode



Studies have shown that just as ultra-violet rays can cause eye damage, shortwave-length blue light rays from LED displays can cause eye damage and affect vision over time. Developed for wellbeing, the Philips LowBlue Mode setting uses a smart software technology to reduce harmful shortwave blue light.

## EasyRead mode



EasyRead mode for a paper-like reading experience



# Specifications

## Picture/Display

- LCD panel type: IPS technology
- Backlight type: W-LED system
- Panel Size: 25 inch / 63.4 cm
- Display Screen Coating: Anti-Glare, 3H, Haze 25%
- Effective viewing area: 535.5 (H) x 338.8 (V)
- Aspect ratio: 16:10
- Optimum resolution: 1920 x 1200 @ 60 Hz
- Pixel Density: 91 PPI
- Response time (typical): 5 ms (Grey to Grey)\*
- Brightness: 300 cd/m<sup>2</sup>
- Contrast ratio (typical): 1000:1
- SmartContrast: 50,000,000:1
- Pixel pitch: 0.279 x 0.282 mm
- Viewing angle: 178° (H)/178° (V), @ C/R > 10
- Flicker-free
- Picture enhancement: SmartImage
- Colour gamut (typical): NTSC 90%\*, sRGB 107.5%\*
- Display colours: 16.7 M
- Scanning Frequency: 30-96 kHz (H)/48-76 Hz (V)
- sRGB
- EasyRead
- LowBlue Mode

## Connectivity

- Signal Input: VGA (Analogue), DVI-D (digital, HDCP), DisplayPort 1.2, HDMI 1.4
- HDCP: HDCP 1.4 (HDMI/ DP)
- Sync Input: Separate Sync, Sync on Green
- USB: USB 3.1 x 1 (upstream), USB 3.1 x 4 (downstream with 1 fast charge B.C 1.2)
- Audio (In/Out): PC audio-in, Headphone out

## Convenience

- Built-in Speakers: 2 W x 2
- User convenience: SmartImage, Input, Brightness, Menu, Power On/Off
- Control software: SmartControl
- OSD Languages: Brazil Portuguese, Czech, Dutch, English, Finnish, French, German, Greek, Hungarian, Italian, Japanese, Korean, Polish, Portuguese, Russian, Simplified Chinese, Spanish, Swedish, Traditional Chinese, Turkish, Ukrainian
- Other convenience: Kensington lock, VESA mount (100 x 100 mm)
- Plug and Play Compatibility: DDC/CI, Mac OS X, sRGB, Windows 10 / 8.1 / 8 / 7

## Stand

- Height adjustment: 150 mm
- Pivot: -/+ 90 degree
- Swivel: -/+ 175 degree
- Tilt: -5~30 degree

## Power

- ECO mode: 12.3 W (typ.)
- On mode: 14.70 W (typ.) (EnergyStar test method)
- Standby mode: < 0.5 W (typ.)
- Off mode: Zero watts with Zero switch
- Energy Label Class: E
- Power LED indicator: Operation - White, Standby mode - White (flashing)
- Power supply: Built-in, 100-240 VAC, 50-60 Hz

## Dimensions

- Product with stand (max height): 546 x 541 x 206 mm
- Product without stand (mm): 546 x 367 x 49 mm
- Packaging in mm (W x H x D): 608 x 524 x 197 mm

## Weight

- Product with stand (kg): 5.09 kg
- Product without stand (kg): 3.50 kg
- Product with packaging (kg): 7.44 kg

## Operating conditions

- Temperature range (operation): 0°C to 40°C °C
- Temperature range (storage): -20°C to 60°C °C
- Relative humidity: 20%-80 %
- Altitude: Operation: +12,000 ft (3658 m), Non-operation: +40,000 ft (12,192 m)
- MTBF (demonstrated): 70,000 hrs (excluded backlight)

## Sustainability

- Environmental and energy: EnergyStar 8.0, PowerSensor, EPEAT\*, TCO Certified, WEEE, RoHS
- Recyclable packaging material: 100 %
- Post-consumer recycled plastic: 85%
- Specific Substances: PVC/BFR free housing, Mercury free

## Compliance and standards

- Regulatory Approvals: CE Mark, FCC Class B, SEMKO, cETLus, CU-EAC, TUV Ergo, TUV/GS, EPA, ICES-003, UKRAINIAN

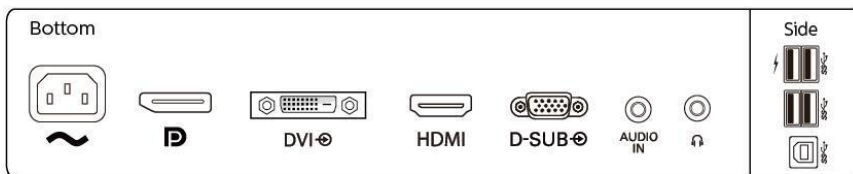
## Cabinet

- Front bezel: Black
- Rear cover: Black
- Foot: Black
- Finish: Texture

## What's in the box?

- Monitor with stand
- Cables: D-Sub cable, DVI-D cable, HDMI cable, DP

- cable, Audio cable, Power cable
- User Documentation



Issue date 2022-04-21

Version: 4.1.1

12 NC: 8670 001 56964  
EAN: 87 12581 75465 5

© 2022 Koninklijke Philips N.V.  
All Rights reserved.

Specifications are subject to change without notice.  
Trademarks are the property of Koninklijke Philips N.V.  
or their respective owners.

[www.philips.com](http://www.philips.com)

\* "IPS" word mark / trademark and related patents on technologies belong to their respective owners.  
\* Response time value equal to SmartResponse  
\* NTSC Area based on CIE 1976  
\* sRGB Area based on CIE1931  
\* Fast charging complies with USB BC 1.2 standard  
\* EPEAT rating is valid only where Philips registers the product. Please visit <https://www.epeat.net/> for registration status in your country.  
\* The monitor may look different from feature images.