



CoreLine Waterproof

WT120C LED22S/840 PSU L1200 EL3

Coreline Waterproof – – 840 neutral white – Power supply unit
– Emergency lighting 3 hours duration

Whether for a new building or renovation of an existing space, customers want lighting solutions that provide quality of light and substantial energy and maintenance savings. The new CoreLine Waterproof range of LED products can be used to replace traditional waterproof luminaires with fluorescent lamps. The process of selecting, installing and maintaining is so easy – it's a simple switch.;InterAct Ready luminaires with integrated wireless communications in this family available, to be used with InterAct gateways, sensors and software.

Product data

General Information			
Number of light sources	1 pc	Glow-wire test	Temperature 850 °C, duration 30 s
Lamp family code	-	Flammability mark	For mounting on normally flammable surfaces
Light source color	840 neutral white	CE mark	CE mark
Light source replaceable	No	ENEC mark	ENEC mark
Number of gear units	1 unit	UL mark	-
Driver/power unit/transformer	Power supply unit	Warranty period	5 years
Driver included	Yes	Remarks	*-Per Lighting Europe guidance paper "Evaluating performance of LED based luminaires - January 2018": statistically there is no relevant difference in lumen maintenance between B50 and for example B10. Therefore the median useful life (B50) value also represents the B10 value.
Optic type	-	Constant light output	No
Optical cover/lens type	Polycarbonate bowl/cover	Number of products on MCB of 16 A type B	33
Luminaire light beam spread	110°		
Emergency lighting	Emergency lighting 3 hours duration		
Control interface	-		
Connection	Push-in connector 4-pole		
Cable	-		
Protection class IEC	Safety class I		

CoreLine Waterproof

RoHS mark	RoHS mark
Product family code	WT120C [Coreline Waterproof]
Unified glare rating CEN	23

Operating and Electrical

Input Voltage	220 to 240 V
Input Frequency	50 to 60 Hz
Inrush current	14 A
Inrush time	0.250 ms
Power Factor (Min)	0.9

Controls and Dimming

Dimmable	No
----------	----

Mechanical and Housing

Housing Material	Polycarbonate
Reflector material	Steel
Optic material	-
Optical cover/lens material	Polycarbonate
Fixation material	Stainless steel
Optical cover/lens finish	Textured
Overall length	1223 mm
Overall width	87 mm
Overall height	96 mm

Approval and Application

Ingress protection code	IP65 [Dust penetration-protected, jet-proof]
Mech. impact protection code	IK08 [5 J vandal-protected]

Initial Performance (IEC Compliant)

Initial luminous flux (system flux)	2900 lm
Luminous flux tolerance	+/-10%

Initial LED luminaire efficacy	98 lm/W
Init. Corr. Color Temperature	4000 K
Init. Color Rendering Index	≥80
Initial chromaticity	(0.38, 0.38) SDCM <3
Initial input power	22.5 W
Power consumption tolerance	+/-10%

Over Time Performance (IEC Compliant)

Control gear failure rate at median useful life 50000 h	5 %
Lumen maintenance at median useful life* 50000 h	L75

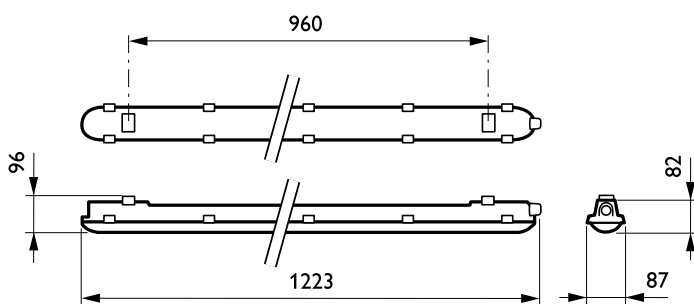
Application Conditions

Ambient temperature range	0 to +25 °C
Performance ambient temperature Tq	25 °C
Maximum dim level	Not applicable
Suitable for random switching	Yes (relates to presence/ movement detection and daylight harvesting)

Product Data

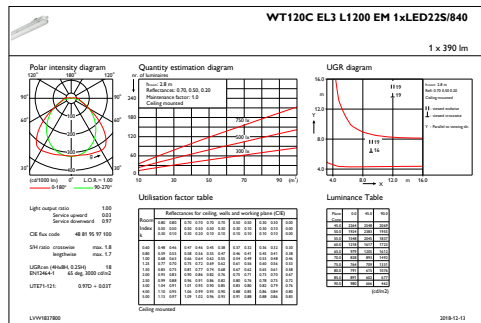
Full product code	871829185418000
Order product name	WT120C LED22S/840 PSU L1200 EL3
EAN/UPC - Product	8718291854180
Order code	910500454303
Numerator - Quantity Per Pack	1
Numerator - Packs per outer box	1
Material Nr. (12NC)	910500454303
Net Weight (Piece)	2.530 kg

Dimensional drawing

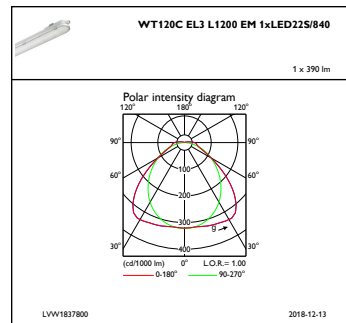


CoreLine Waterproof WT120C

Photometric data



IFGU1_WT120CEL3L1200EM1xLED22S840



IFPC1_WT120CEL3L1200EM1xLED22S840

