



LuxSpace, surface mounted

DN570C LED40S/840 PSED-E C D250 WH

LUXSPACE 2 COMPACT LOW HEIGHT - LED Module, system flux 4000 lm - 840 neutral white - Power supply unit with DALI interface external, DC compatible for central emergency lighting - High-gloss mirror - Push-in connector and pull relief - White

Customers are looking to optimize all their resources, and that means not just their running costs (energy, etc.) but also their human resources. Energy savings are therefore a priority, but they must not have an adverse effect on the well-being of employees, who need a pleasant environment in order to be more productive, or on customers, who want to enjoy their shopping experience. LuxSpace provides the perfect combination of efficiency, light comfort and design, without compromising on lighting performance (color rendering and color uniformity). It offers a wide choice of options for creating the desired ambience, no matter the application.

Product data

General Information			
Lamp family code	LED40S [LED Module, system flux 4000 lm]	Driver included	Yes
Light source colour	840 neutral white	Optic type	C [High-gloss mirror]
Cap base	- [-]	Luminaire light beam spread	80°
Light source replaceable	No	Control interface	DALI
Number of gear units	1 unit	Connection	PIP [Push-in connector and pull relief]
Gear	-	Cable	-
Driver/power unit/transformer	PSED-E [Power supply unit with DALI interface external, DC compatible for central emergency lighting]	Protection class IEC	Safety class I (I)
		Glow-wire test	850/5 [Temperature 850 °C, duration 5 s]
		Flammability mark	F [For mounting on normally flammable surfaces]

LuxSpace, surface mounted

CE mark	CE mark
ENEC mark	ENEC mark
UL mark	-
Warranty period	5 years
Remarks	*-Per Lighting Europe guidance paper "Evaluating performance of LED based luminaires - January 2018": statistically there is no relevant difference in lumen maintenance between B50 and for example B10. Therefore the median useful life (B50) value also represents the B10 value.
Constant light output	No
Number of products on MCB	24
RoHS mark	-
Product Family Code	DN570C [LUXSPACE 2 COMPACT LOW HEIGHT]

Operating and Electrical

Input voltage	220-240 V
Input frequency	50 Hz
Inrush current	5.3 A
Inrush time	0.700 ms
Power factor (min.)	0.9

Controls and Dimming

Dimmable	Yes
----------	-----

Mechanical and Housing

Housing material	Aluminum die-cast
Reflector material	Polycarbonate aluminum coated
Optic material	Polycarbonate
Optical cover/lens material	Polycarbonate
Fixation material	Steel
Optical cover/lens finish	Frosted
Overall height	217 mm
Overall diameter	250 mm

Approval and Application

Ingress protection code	IP20 [Finger-protected]
-------------------------	--------------------------

Mech. impact protection code	IK02 [0.2 J standard]
------------------------------	------------------------

Initial Performance (IEC Compliant)

Initial luminous flux	4200 lm
Luminous flux tolerance	+/-10%
Initial LED luminaire efficacy	131 lm/W
Init. Corr. colour temperature	4000 K
Init. colour rendering index	>80
Initial chromaticity	(0.38, 0.37) SDCM <3
Initial input power	32 W
Power consumption tolerance	+/-10%

Over Time Performance (IEC Compliant)

Control gear failure rate at median useful life 50000 h	5 %
Lumen maintenance at median useful life* 50000 h	L90

Application Conditions

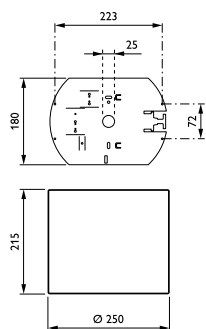
Ambient temperature range	+10 to +25 °C
Performance ambient temperature Tq	25 °C
Maximum dimming level	1%
Suitable for random switching	Yes (relates to presence/ movement detection and daylight harvesting)

Product Data

Full product code	871829194491100
Order product name	DN570C LED40S/840 PSED-E C D250 WH
EAN/UPC – product	8718291944911
Order code	94491100
Numerator – quantity per pack	1
Numerator – packs per outer box	1
Material no. (12NC)	910503706716
Net weight (piece)	1.947 kg

LuxSpace, surface mounted

Dimensional drawing



LuxSpace gen2 DN570B-DN572B

