

Inspiron 24 5000

Setup and Specifications

Computer Model: Inspiron 24-5488
Regulatory Model: W12C
Regulatory Type: W12C007



Notes, cautions, and warnings



NOTE: A NOTE indicates important information that helps you make better use of your product.



CAUTION: A CAUTION indicates either potential damage to hardware or loss of data and tells you how to avoid the problem.



WARNING: A WARNING indicates a potential for property damage, personal injury, or death.

Copyright © 2017 Dell Inc. or its subsidiaries. All rights reserved. Dell, EMC, and other trademarks are trademarks of Dell Inc. or its subsidiaries. Other trademarks may be trademarks of their respective owners.

2017 - 01

Rev. A00

Contents

Set up your computer..... 4

Views..... 10

 Front.....10

 Right.....11

 Left.....12

 Back.....13

 Tilt.....14

Specifications.....16

 Dimensions and weight.....16

 System information.....16

 Memory.....16

 Ports and connectors.....17

 Communications.....17

 Audio.....18

 Storage.....18

 Media-card reader.....18

 Camera.....19

 Power adapter.....19

 Display.....19

 Video.....20

 Stand.....20

 Computer environment.....20

Getting help and contacting Dell.....22

 Self-help resources.....22

 Contacting Dell.....22

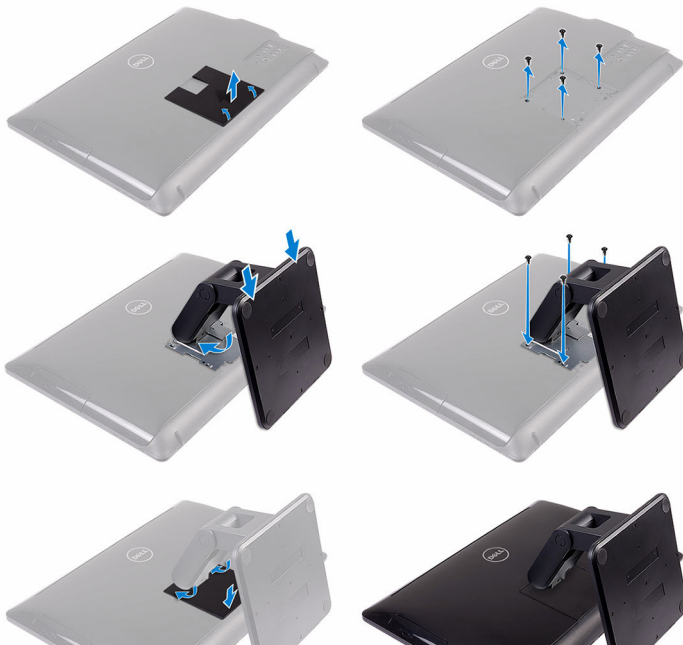


Set up your computer

- 1 Set up the stand.
 - Pedestal Stand



- Articulating stand



- 2** Set up the keyboard and mouse.
See the documentation that shipped with the keyboard and mouse.

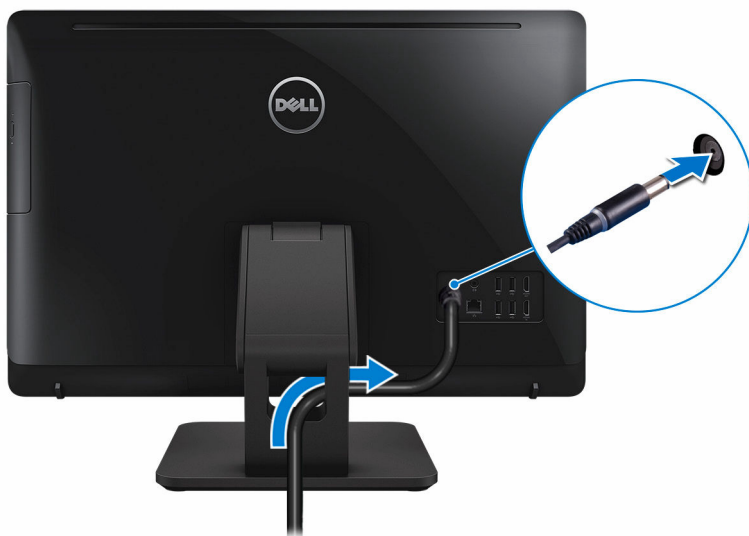


3 Connect the power adapter.

- Pedestal Stand



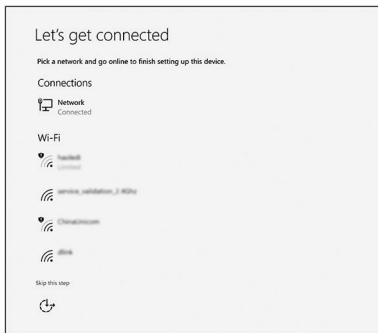
- Articulating Stand



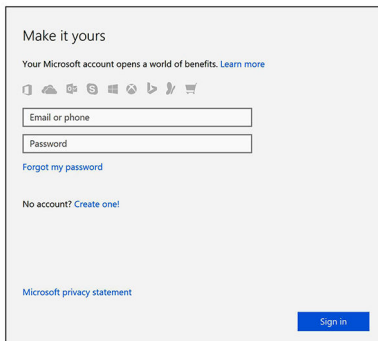
- 4 Press the power button.



- 5 Follow the instructions on the screen to finish Windows setup.
- a) Connect to a network.



- b) Sign-in to your Microsoft account or create a local account.



6 Explore Dell resources on your desktop.

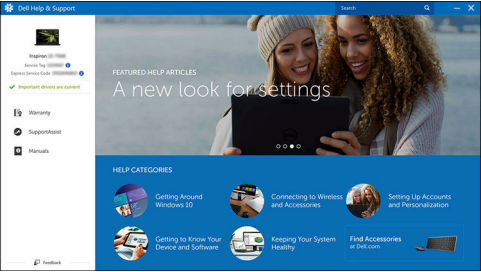
Table 1. Locate Dell apps



Register your computer



Dell Help & Support

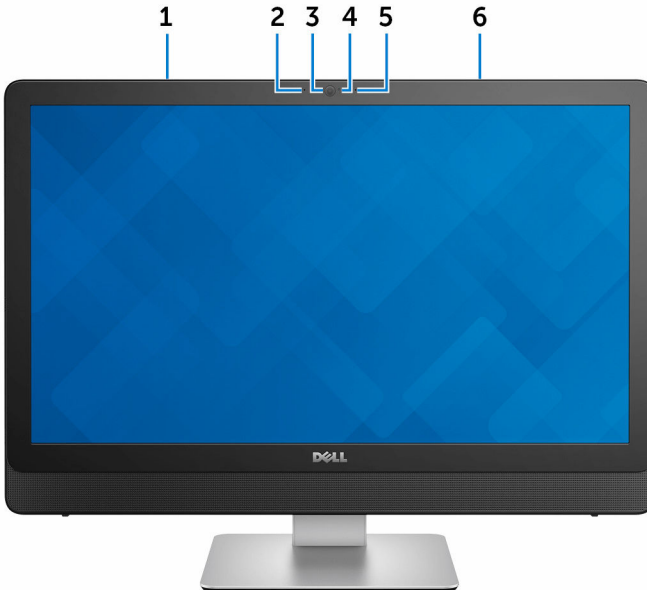


SupportAssist — Check and update your computer



Views

Front



- 1 **Left microphone (touchscreen)**
Provides digital sound input for audio recording and voice calls.
- 2 **Left microphone (non-touchscreen)**
Provides digital sound input for audio recording and voice calls.
- 3 **Camera**
Enables you to video chat, capture photos, and record videos.
- 4 **Camera-status light**
Turns on when the camera is in use.
- 5 **Right microphone (non-touchscreen)**
Provides digital sound input for audio recording and voice calls.

6 **Right microphone (touchscreen)**

Provides digital sound input for audio recording and voice calls.

Right



1 **Optical drive**

Reads from and writes to CDs and DVDs.

2 **Brightness control buttons (2)**

Press to increase or decrease the display brightness.

3 **Screen-off button**

Press and hold to turn off the display; press again to turn on the display.

4 **Power button**

Press to turn on the computer if it is turned off, in sleep state, or in hibernate state.

Press to put the computer in sleep state if it is turned on.

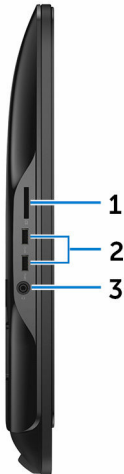
Press and hold for 4 seconds to force shut-down the computer.





NOTE: You can customize the power-button behavior in Power Options. For more information, see *Me and My Dell* at www.dell.com/support/manuals.

Left



1 Media-card reader

Reads from and writes to media cards.

2 USB 3.0 ports (2)

Connect peripherals such as storage devices and printers. Provides data transfer speeds up to 5 Gbps.

3 Headset port

Connect a headphone or a headset (headphone and microphone combo).

Back



1 Audio-out port

Connect audio-output devices such as speakers, amplifiers, and so on.

2 HDMI-out port

Connect a TV or another HDMI-in enabled device. Provides video and audio output.

3 HDMI-in port

Connect a gaming console, Blu-ray player, or other HDMI-out enabled devices.

4 USB 2.0 ports (4)

Connect peripherals such as storage devices and printers. Provides data transfer speeds up to 480 Mbps.

5 Network port

Connect an Ethernet (RJ45) cable from a router or a broadband modem for network or internet access.

6 Power-adaptor port



Connect a power adapter to provide power to your computer.

7 **Service Tag label**

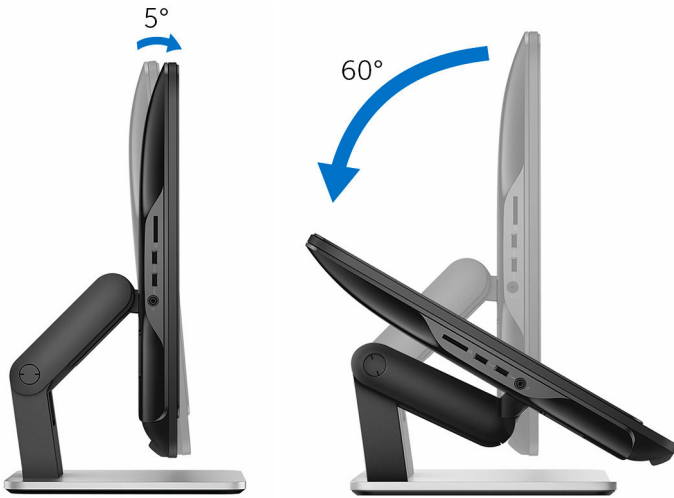
The Service Tag is a unique alphanumeric identifier that enables Dell service technicians to identify the hardware components in your computer and access warranty information.

Tilt

Pedestal stand



Articulating stand



Specifications

Dimensions and weight

Table 2. Dimensions and weight

Height	385.33 mm (15.17 in)	
Width	572.62 mm (22.54 in)	
Depth	38.20 mm (1.50 in)	
Weight (maximum)	Touchscreen	Non-touchscreen
Without stand	6.98 kg (15.39 lb)	5.89 kg (13 lb)
With pedestal stand	8.40 kg (18.52 lb)	7.31 kg (16.12 lb)
With articulating stand	9.98 kg (22 lb)	8.88 kg (19.58 lb)



NOTE: The weight of your computer varies depending on the configuration ordered and the manufacturing variability.

System information

Table 3. System information

Computer model	Inspiron 24-5488
Processor	7 th generation Intel Core i5/i7 series
System chipset	H110

Memory

Table 4. Memory specifications

Slots	Two DIMM slots
Type	Dual-channel DDR3



Speed	Up to 1600 MHz
Configurations supported	2 GB, 4 GB, 8 GB, 12 GB, and 16 GB

Ports and connectors

Table 5. Ports and connectors specifications

External:	
Network	One RJ45 port
USB	<ul style="list-style-type: none"> • Four USB 2.0 ports • Two USB 3.0 ports
Audio/Video	<ul style="list-style-type: none"> • One headset port • One audio-out port • One HDMI-out port • One HDMI-in port

Table 6. Ports and connectors specifications

Internal:	
M.2 card	One M.2 slot for WLAN and Bluetooth combo

Communications

Table 7. Communication specifications

Ethernet	10/100/1000 Mbps Ethernet controller integrated on system board
Wireless	<ul style="list-style-type: none"> • Wi-Fi 802.11ac • Wi-Fi 802.11b/g/n • Bluetooth 4.0



Audio

Table 8. Audio specifications

Controller	Realtek ALC3661 with Waves Maxx Audio Pro
Speakers	Two
Speaker Output	<ul style="list-style-type: none">• Average – 3 W• Peak – 3.5 W
Microphone	Dual Digital Microphone
Volume controls	Program menus

Storage

Table 9. Storage specifications

Interface	<ul style="list-style-type: none">• SATA 3 Gbps for optical drive• SATA 6 Gbps for hard drive
Hard drive	One 2.5-inch drive
Optical drive	One 9.5-mm DVD+/-RW drive

Media-card reader

Table 10. Media-card reader specifications

Type	One 4-in-1 slot
Cards supported	<ul style="list-style-type: none">• SD card• MultiMediaCard (MMC)• SD Extended Capacity (SDXC) card• SD High Capacity (SDHC) card



Camera

Table 11. Camera specifications

Resolution	<ul style="list-style-type: none">• Still image: 2.0 megapixels• Video: 1280 x 720 (HD) at 30 fps (maximum)
Diagonal viewing angle	74 degrees

Power adapter

Table 12. Power adapter specifications

Type	<ul style="list-style-type: none">• 90 W• 130 W
Input Voltage	100 VAC to 240 VAC
Input frequency	50 Hz to 60 Hz
Input current (maximum)	2.50 A
Output current (continuous)	4.62 A/6.70 A
Rated output voltage	19.50 VDC
Temperature range: Operating	0°C to 40°C (32°F to 104°F)
Temperature range: Storage	–40°C to 70°C (–40°F to 158°F)

Display

Table 13. Display specifications

Type	<ul style="list-style-type: none">• 23.8-inch FHD touchscreen• 23.8-inch FHD non-touchscreen
Resolution (maximum)	1920 x 1080
Pixel pitch	0.2745 mm x 0.2745 mm



Refresh rate	60 Hz
Controls	Brightness can be controlled using the display-brightness increase/decrease buttons
Dimensions:	
Height	317.40 mm (12.50 in)
Width	543 mm (21.38 in)
Diagonal	604.52 mm (23.80 in)

Video

Table 14. Video specifications

Controller:		
	Integrated	Intel HD 630 Graphics
	Discrete	Nvidia GeForce 930MX
Memory:		
	Integrated	Shared system memory
	Discrete	4 GB DDR3

Stand

Table 15. Stand

	Pedestal	Articulating
Height	215.20 mm (8.47 in)	205.28 mm (8.08 in)
Width	225.42 mm (8.87 in)	250 mm (9.84 in)
Depth	205.60 mm (8.09 in)	226.46 mm (8.92 in)

Computer environment

Airborne contaminant level: G1 as defined by ISA-S71.04-1985



Table 16. Computer environment

	Operating	Storage
Temperature range	0°C to 35°C (32°F to 95°F)	–40°C to 65°C (–40°F to 149°F)
Relative humidity (maximum)	10% to 90% (non-condensing)	0% to 95% (non-condensing)
Vibration (maximum)*	0.66 GRMS	1.30 GRMS
Shock (maximum)	110 G†	160 G‡
Altitude (maximum)	–15.2 m to 3048 m (–50 ft to 10,000 ft)	–15.2 m to 10,668 m (–50 ft to 35,000 ft)

* Measured using a random vibration spectrum that simulates user environment.

† Measured using a 2 ms half-sine pulse when the hard drive is in use.

‡ Measured using a 2 ms half-sine pulse when the hard-drive head is in parked position.





Getting help and contacting Dell

Self-help resources

You can get information and help on Dell products and services using these self-help resources:

Table 17. Self-help resources

Information about Dell products and services	www.dell.com
Dell Help & Support app	
Get started app	
Accessing help	In Windows search, type Help and Support, and press Enter.
Online help for operating system	www.dell.com/support/windows www.dell.com/support/linux
Troubleshooting information, user manuals, setup instructions, product specifications, technical help blogs, drivers, software updates, and so on.	www.dell.com/support
Learn about your operating system, setting up and using your computer, data backup, diagnostics, and so on.	See <i>Me and My Dell</i> at www.dell.com/support/manuals .

Contacting Dell

To contact Dell for sales, technical support, or customer service issues, see www.dell.com/contactdell.





NOTE: Availability varies by country and product, and some services may not be available in your country.



NOTE: If you do not have an active internet connection, you can find contact information on your purchase invoice, packing slip, bill, or Dell product catalog.

