

ET-8700 Start Here

Read these instructions before using your product.

Note for Spanish speakers/Nota para hispanohablantes:

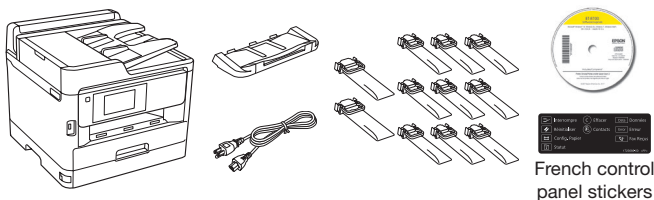
Para obtener instrucciones de configuración en español, consulte la *Guía de instalación* en www.epson.com/support/et8700sp (requiere una conexión a Internet).

Important Safety Instructions: When using telephone equipment, you should always follow basic safety precautions to reduce the risk of fire, electric shock, and personal injury, including the following:

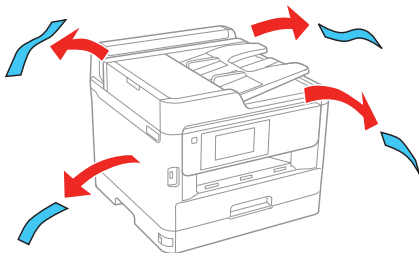
- Do not use the Epson® product near water.
- Always keep this guide handy.
- Avoid using a telephone during an electrical storm. There may be a remote risk of electric shock from lightning.
- Do not use a telephone to report a gas leak in the vicinity of the leak.

Caution: To reduce the risk of fire, use only a No. 26 AWG or larger telecommunication line cord.

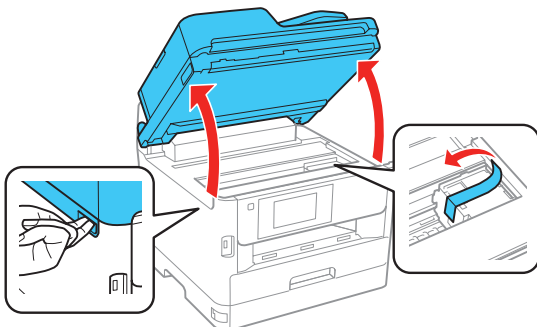
1 Unpack



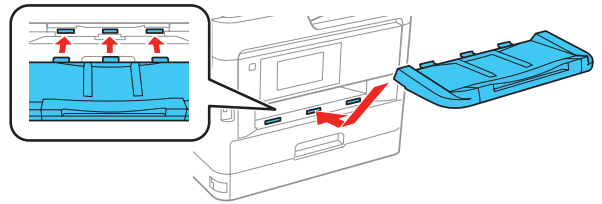
- 1 Remove all protective materials from the product.



- 2 Lift up the scanner unit and remove all protective materials from inside the product, then close the scanner unit.

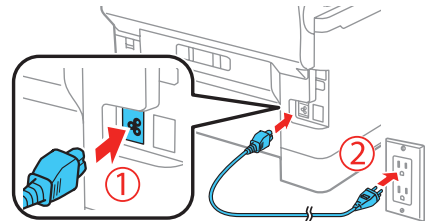


- 3 Insert the output tray.



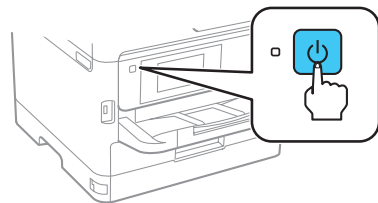
2 Turn on and configure

- 1 Connect the power cord to the back of the product and to an electrical outlet.



Caution: Do not connect to your computer yet.

- 2 Turn on the product.



- 3 Select your language, country, and time on the LCD screen.

Note: You can change these settings later using the product's control panel. For more information, see the online *User's Guide*.

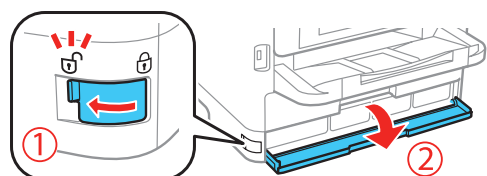
3 Install ink supply units (ink packs)

Note:

- The product is designed for use with Epson ink packs only, not third-party ink.
- The ink packs included with the product are designed for product setup and not for resale.
- After some ink is used for charging, the rest is available for printing.

Caution: Keep the ink packs out of the reach of children and do not drink the ink.

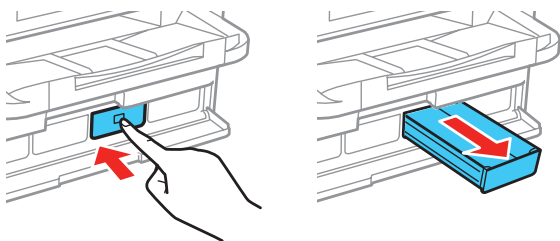
- 1 Unlock and open the ink pack tray cover, then remove the packing material.



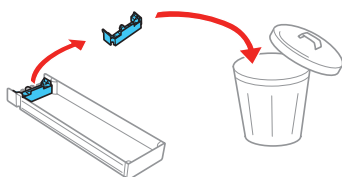
413593900

EPSON®
EXCEED YOUR VISION

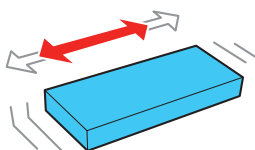
- 2** Press an ink pack tray to release it, then pull the tray out.



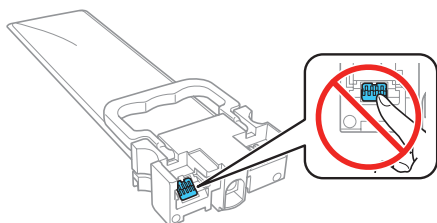
- 3** Remove and discard the protective piece from the ink pack tray.



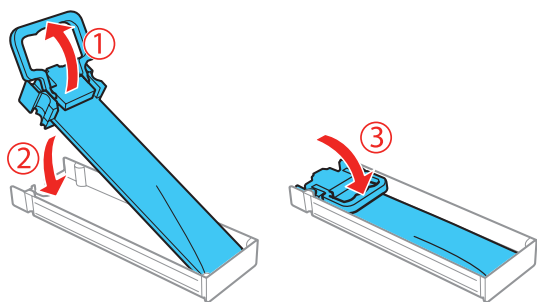
- 4** Shake an ink pack 10 times, then remove it from the packaging.



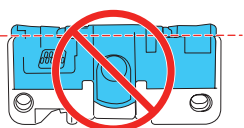
Note: Do not touch the green chip on the ink pack.



- 5** Move the handle forward, place the ink pack into the ink pack tray until it clicks, then move the handle back to its original position.

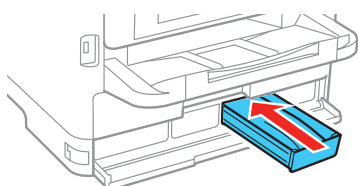


Note: Make sure the ink pack is fully inserted and level with the top of the ink pack tray.

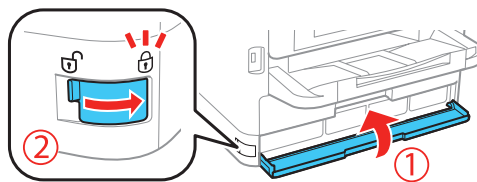


- 6** Insert the ink pack tray into the printer. Repeat steps 2 to 6 for the other ink packs.

Note: The ink packs are keyed to fit into the correct color slot. If you cannot insert the ink pack tray all the way, do not force it. Make sure the ink pack color matches the color slot on the printer.



- 7** Close the ink pack tray cover and lock it.

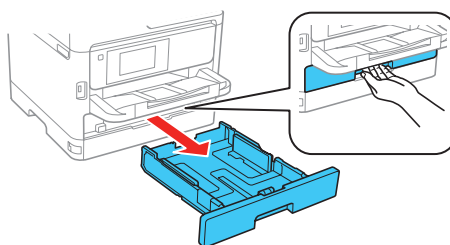


- 8** Press **OK** on the LCD screen to start charging the ink. Ink charging takes approximately 7 minutes. A message appears when ink charging is complete.

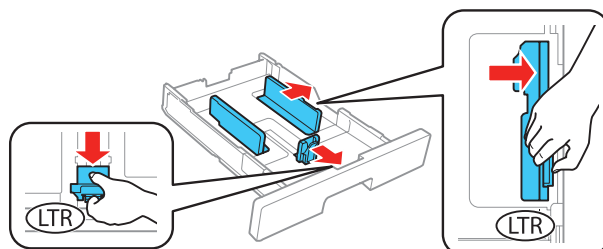
4 Load paper

For instructions on loading envelopes or legal-size paper, or using the rear paper feed slot, see the online *User's Guide*.

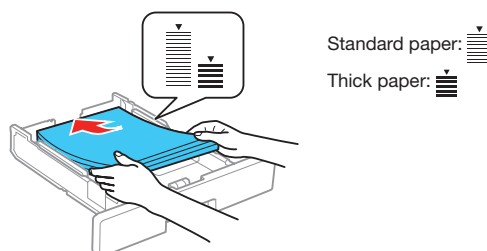
- 1** Make sure the product is done charging the ink, then pull out the paper cassette.



- 2** Slide the side edge guides all the way out and set the front edge guide to the paper size you are using.

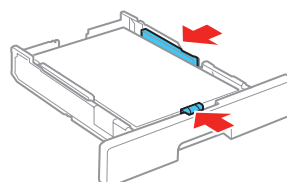


- 3** Insert paper with the glossy or printable side down.

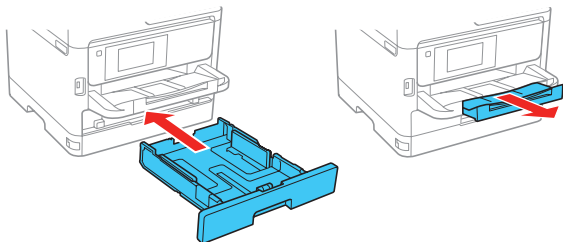


Note: Make sure the paper is under the arrow mark for your paper type and loaded against the front edge of the cassette.

- 4** Slide the edge guides against the paper, but not too tightly.



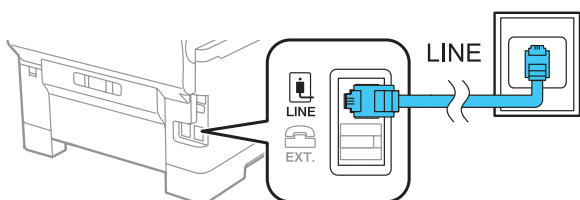
- 5** Keep the cassette flat as you insert it all the way, then pull out the output tray extension.



- 6** Select the paper settings on the product's control panel.

5 Connect the fax line

- 1** Connect a phone cord to a telephone wall jack and to the **LINE** port on your product. See the online *User's Guide* for more information.



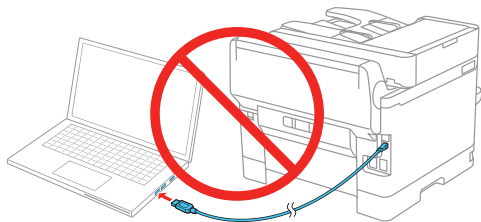
- 2** If prompted, press **Proceed** on the LCD screen to set up the fax, or press **Close** to set it up later.

6 Install software

Note: If your computer does not have a CD/DVD drive or you are using a Mac, an Internet connection is required to obtain the product software.

To print from a Chromebook™, go to www.epson.com/support/gcp (U.S.) or www.epson.ca/support/gcp (Canada) for instructions.

- 1** Make sure the product is **NOT CONNECTED** to your computer.



Windows®: If you see a Found New Hardware screen, click **Cancel** and disconnect the USB cable.

- 2** Insert your product CD or download and run your product's software package. For the latest software, visit:

www.epson.com/support/et8700 (U.S.)
www.epson.ca/support/et8700 (Canada)

- 3** Follow the instructions on the computer screen to run the setup program.

- 4** When you see the Select Your Connection screen, select one of the following and follow the on-screen instructions:

- **Wireless connection**
In most cases, the software installer automatically attempts to set up your wireless connection. If setup is unsuccessful, you may need to enter your network name (SSID) and password.
- **Direct USB connection**
Make sure you have a USB cable (not included).
- **Wired network connection**
Make sure you have an Ethernet cable (not included).

Mobile printing

Connect wirelessly from your smartphone, tablet, or computer. Print documents and photos from across the room or around the world:

- Print directly from your iOS device. Simply connect your printer and device to the same network and tap the action icon to select the print option.
- Use Epson Print Enabler (free from Google Play™) with Android™ devices (v4.4 or later). Then connect your printer and device to the same network and tap the menu icon to select the print option.
- Print remotely with Epson Connect™ and Google Cloud Print™. See your online *User's Guide* for instructions or learn more at www.epson.com/connect (U.S.) or www.epson.ca/connect (Canada).

Any problems?

Network setup was unsuccessful.

- Make sure you select the right network name (SSID).
- Restart your router (turn it off and then on), then try to connect to it again.
- The printer can only connect to a network that supports 2.4 GHz connections. If your router offers both 2.4 GHz and 5 GHz connections, make sure 2.4 GHz is enabled.
- If you see a firewall alert message, click **Unblock** or **Allow** to let setup continue.
- If your network has security enabled, make sure you enter your network password (WEP key or WPA passphrase) correctly. Be sure to enter your password in the correct case.

There are lines or incorrect colors in my printouts.

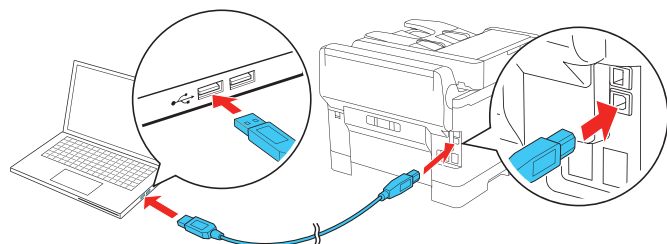
Run a nozzle check to see if there are any gaps in the printout. Then clean the print head, if necessary. See the online *User's Guide* for more information.

The product's screen is dark.

Make sure your product is turned on, and touch the screen or press any button to wake it from sleep mode.

Setup is unable to find my printer after connecting it with a USB cable.

Make sure your product is securely connected as shown:



Any questions?

User's Guide

Windows: Click the icon on your desktop or Apps screen to access the online *User's Guide*.

Mac: Click the icon in **Applications/Epson Software/Guide** to access the online *User's Guide*.

If you don't have a User's Guide icon, go to the Epson website, as described below.

Support

Visit www.epson.com/support/et8700 (U.S.) or www.epson.ca/support/et8700 (Canada) to download drivers, view manuals, get FAQs, or contact Epson.

Call (562) 276-4382 (U.S.) or (905) 709-3839 (Canada), 6 AM to 8 PM, Pacific Time, Monday through Friday, and 7 AM to 4 PM, Pacific Time, Saturday. Days and hours of support are subject to change without notice. Toll or long distance charges may apply.

Recycling

Epson offers a recycling program for end of life hardware and ink packs. Please go to www.epson.com/recycle (U.S.) or www.epson.ca/recycle (Canada) for information on how to return your products for proper disposal.

Need paper and ink?

Ensure peak performance and brilliant results with Genuine Epson Ink and specialty papers, engineered specifically for Epson printers. Find Genuine Epson Ink and specialty papers at www.epson.com (U.S. sales) or www.epson.ca (Canadian sales) and at Epson authorized resellers. Call 800-GO-EPSON (800-463-7766).



DESIGNED *for*
EXCELLENCE™
Epson printers, ink and specialty papers.

ET-8700 replacement ink packs

Color	High-capacity	Extra High-capacity
Black	R02L	R02X
Cyan	R02L	—
Magenta	R02L	—
Yellow	R02L	—



EPSON and DURABrite are registered trademarks, EPSON Exceed Your Vision is a registered logomark, and Epson Connect is a trademark of Seiko Epson Corporation.

Designed for Excellence is a trademark of Epson America, Inc.

Mac is a trademark of Apple Inc., registered in the U.S. and other countries.

Android, Google Cloud Print, Chromebook, and Google Play are trademarks of Google Inc.

General Notice: Other product names used herein are for identification purposes only and may be trademarks of their respective owners. Epson disclaims any and all rights in those marks.

This information is subject to change without notice.

© 2018 Epson America, Inc., 2/18

CPD-54657R1