

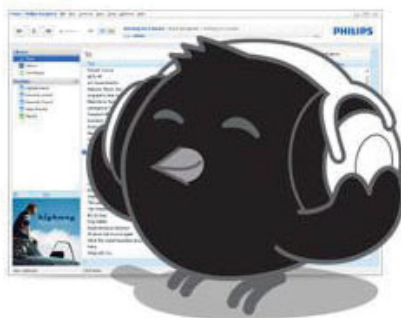
# Always there to help you

Register your product and get support at  
[www.philips.com/welcome](http://www.philips.com/welcome)



Philips Songbird/00

Philips Songbird



# User manual

# PHILIPS



# Contents

---

<b>1</b>	<b>About Philips Songbird</b>	<b>2</b>
----------	-------------------------------	----------

---

<b>2</b>	<b>Install Philips Songbird on your PC</b>	<b>3</b>
	PC requirements	3
	Install Philips Songbird on your PC	3

---

<b>3</b>	<b>Build your PC media library through Philips Songbird</b>	<b>4</b>
	Collect existing media files from your PC	4
	Set the watch folder	4
	Import media files	5
	Get contents from online sources	5
	Search online	6
	Rip songs from CDs	6
	Edit CD information	7

---

<b>4</b>	<b>Manage media files in Philips Songbird</b>	<b>8</b>
	Create playlists in Philips Songbird	8
	Create a playlist	8
	Generate LikeMusic playlists	8
	Save the play queue as a playlist	9
	Edit media files in Philips Songbird	10
	Edit metadata	10
	Get album artwork	10
	Remove media files from the library	11

---

<b>5</b>	<b>Sync the player with Philips Songbird</b>	<b>12</b>
	Select auto or manual sync	12
	Auto sync	12
	Manual sync	13

---

<b>6</b>	<b>Update the firmware through Philips Songbird</b>	<b>14</b>
----------	---	-----------

---

<b>7</b>	<b>Repair the player through Philips Songbird</b>	<b>15</b>
----------	---	-----------

# 1 About Philips Songbird

As PC software, **Philips Songbird** allows you to do the following:

- Manage your media collection on a PC;
- Sync your Philips MP3/ MP4 players with the media library on your PC;
- Update the firmware of your Philips MP3/ MP4 players;
- Repair your Philips MP3/ MP4 players;
- Register your Philips MP3/ MP4 players on [www.philips.com/welcome](http://www.philips.com/welcome).

## 2 Install Philips Songbird on your PC

### PC requirements

Before you install **Philips Songbird** on your PC, make sure that your PC system meets the following requirements:

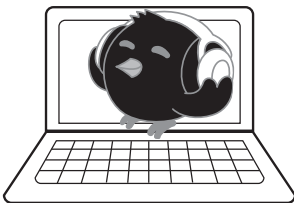
- Windows® XP (SP3 or above) / Vista / 7
- Pentium III 800 MHz processor or higher
- 512 MB RAM
- 500 MB hard disk space
- Internet connection
- Windows® Internet Explorer 6.0 or later
- USB port

- 3 Follow the onscreen instructions to complete the installation.

#### Note

- The installation requires you to agree to the license terms.

### Install Philips Songbird on your PC



#### Download Philips Songbird to your PC

- 1 Connect your PC to the Internet.
- 2 From [www.philips.com/Songbird](http://www.philips.com/Songbird) or [www.philips.com/support](http://www.philips.com/support), download **Philips Songbird**.

#### Install Philips Songbird on your PC

- 1 Double-click the downloaded .exe file of **Philips Songbird**.  
↳ A pop-up screen is displayed.
- 2 Select your language and country.

# 3 Build your PC media library through Philips Songbird

Through **Philips Songbird**, you can build your PC media library in the following ways:

- Collect existing media files from your PC;
- Get contents from online sources;
- Rip songs from CDs.

## Collect existing media files from your PC

### Set the watch folder

#### Create a central folder

You can have media files automatically added to your library when you copy them to a folder. Creating a central folder is recommended. In **Philips Songbird**, set the central folder as the watch folder. Each time you launch **Philips Songbird**, songs are added to/ removed from **Philips Songbird** as they are on the central folder:

On the PC, create a central folder to save all media files, for example, C:\Songbird.

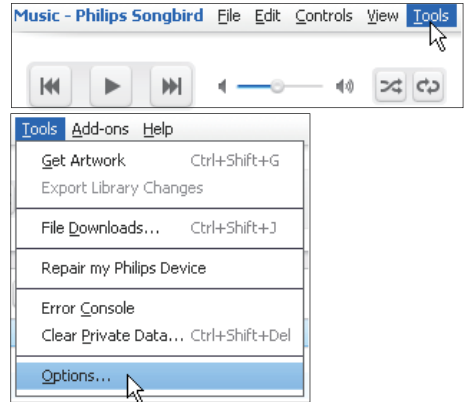
#### First-time launch

The first time you launch **Philips Songbird** on a PC, do the following as prompted to import existing media files into **Philips Songbird**:

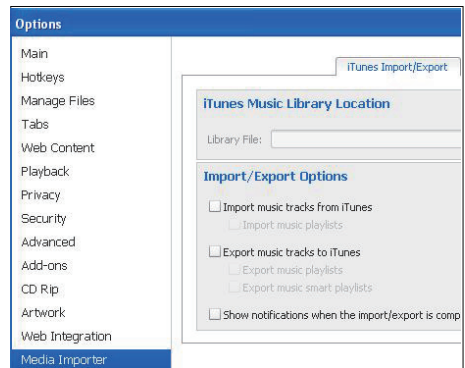
- Select the iTunes media folder to import an existing iTunes library;
- Select the central folder to search and import the existing music files.
  - ↳ The central folder is set as the watch folder of **Philips Songbird**.

#### Set iTunes media folder

- 1 On **Philips Songbird**, go to **Tools > Options...**



- 2 Select **Media Importer**, and then the **iTunes Importer** tab.



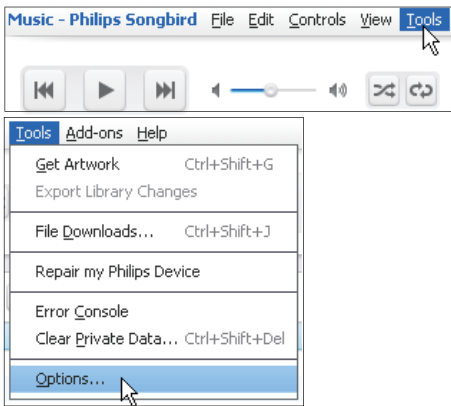
- 3 Verify your library location and options.
- 4 Click the **Import Library** button next to the library location.
  - ↳ The software imports the iTunes library into **Philips Songbird**.



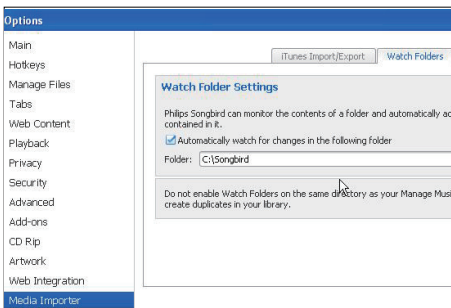
## Set the watch folder

In **Philips Songbird**, set the watch folder as follows:

**1** Select **Tools > Options**.



**2** In **Options**, select **Media Importer**. Then, select the **Watch Folders** tab.



**3** In **Watch Folders**, tick the check box as shown.

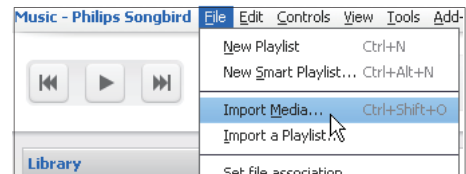
**4** Click **Browse**, and select the central folder (e.g. C:\Songbird) as the watch folder:  
 ↳ In **Philips Songbird**, media files are added or removed as they are in the central music folder:



## Import media files

In **Philips Songbird**,

- go to **File > Import Media** to select folders on the PC.  
 ↳ Media files are added under **Library**.
- or, go to **File > Import a playlist** to select playlists on the PC.  
 ↳ Media files are added under **Playlists**.

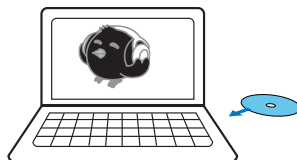


## Get contents from online sources

You can access and purchase content from online sources. Find the available online services under **Services** on the source selector pane.

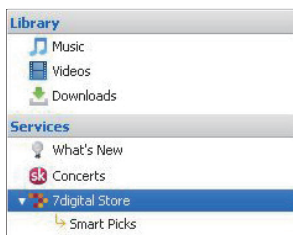
## Note

- Before you download or purchase content from online services, subscribe to the online service and log in to your account.
- Some of the services are available in certain countries.



## Search online

- 1 Select an online service:
  - Select an option under **Services**;
  - Alternatively, in the search box, click the down arrow to select an online service.



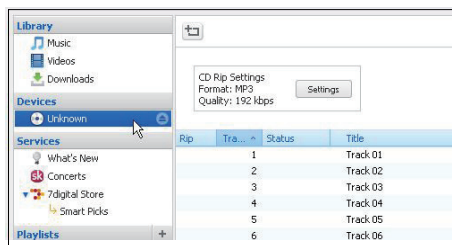
↳ You enter the Web page of the online source.

- 2 Search for your media file.
  - If necessary, use the search box to enter a keyword.

## Rip songs from CDs

- 1 On your PC, insert your music CD into the CD drive.
  - ↳ A pop-screen is displayed.

- 2 On the pop-up screen, select **Rip music from CD using Philips Songbird**.
- 3 On **Philips Songbird**, click the CD under **Devices**.
  - ↳ Songs on the CD are displayed.



- 4 Lookup or edit the CD information (see 'Edit CD information' on page 7).

- 5 Rip the songs from the CD:

- ① **Select songs that you want to rip:**  
Select or unselect the check box next to the song.

- ② **To start, click the Rip CD button.**  
To stop, click the **Stop Rip** button.

↳ After the CD ripping is complete, a message is displayed.

- ③ **To eject the CD, click the Eject CD button.**



**To select your options for CD ripping,**

- In the box of **CD Rip Settings**, click the **Settings** button.



## Edit CD information

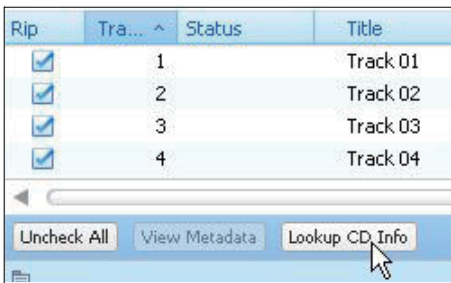
Before you rip the CD, you can do the following to edit CD information (metadata):

- Look up the CD information through the Gracenote® Media Recognition Service over the Internet;
- Edit the metadata by yourself.

After you rip the CD, songs are sorted by song information in **Philips Songbird**.

### Lookup CD information

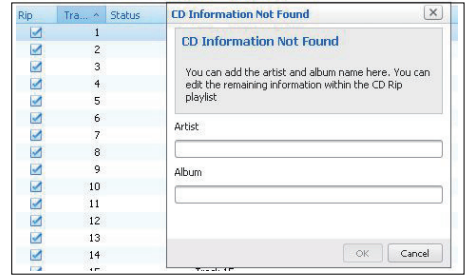
- 1 Make sure that you have done the following:
  - Connect your PC to the Internet;
  - Insert an audio CD into the CD drive.
- 2 In the list of CD songs, click Lookup CD Info at the base (see 'Rip songs from CDs' on page 6).



- 3 Select the CD information that matches your CD.
  - ↳ The song information is displayed for the songs.

### Edit CD information

If the CD information cannot be found, a pop-up screen is displayed.



- 1 On the pop-up screen, enter the CD information, artist and album.
- 2 After the CD ripping is complete, find the CD songs in **Library > Music**.
  - You can find the CD songs by the artist or album you have entered.
- 3 Edit the song information as needed (see 'Edit metadata' on page 10).

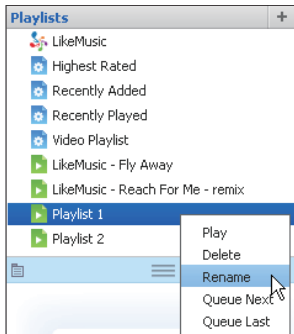
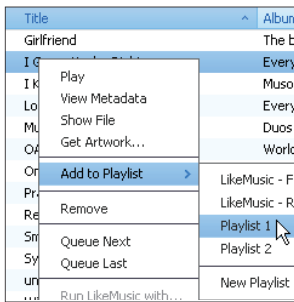
# 4 Manage media files in Philips Songbird

## Create playlists in Philips Songbird

With a playlist, you can manage and sync your songs as needed.

### Create a playlist

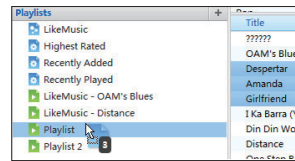
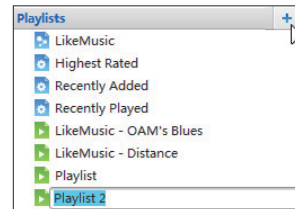
Select songs that you want to play. Add the songs to a playlist.




- 1 In **Library > Music**, select songs.
  - To select multiple songs, hold down the **Ctrl** button when you click songs.
- 2 To add the songs to a playlist:

- Right click on the songs, and select **Add to Playlist**;
- Select a playlist;
  - ↳ The songs are added to the playlist.
- To create a playlist, select **New Playlist**.
  - ↳ A new playlist is created for the songs.
  - ↳ Under **Playlists**, name the playlist as needed.

Alternatively,  
Create a playlist. Add selected songs to the playlist.



- 1 Under **Playlists**, click **+** to create a playlist.
  - ↳ A new playlist is created.
- 2 Name the new playlist as desired.
- 3 Drag and drop media files to the playlist.

 **Tip**

- To drag and drop multiple files at the same time, hold down the **Ctrl** button when you click on selections.

### Generate LikeMusic playlists

Based on the **LikeMusic** analysis, a playlist can be generated from a seed song.  
**LikeMusic** analyzes songs in your library and, based on their music characteristics, creates relationships between them. These relationships

help **LikeMusic** to create playlists of songs that sound great together:  
 When you import songs into the music library of **Philips Songbird**, the **LikeMusic** analysis starts. For the song that completes the analysis, the **LikeMusic** icon lights up; For the song that cannot complete the analysis, the icon remains gray.

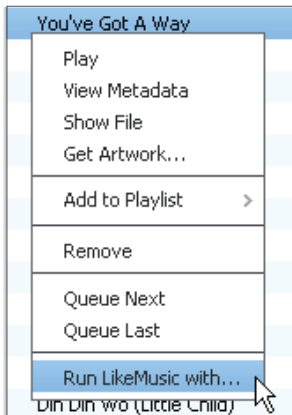


### Select a seed song

Make sure that the seed song has completed the **LikeMusic** analysis.

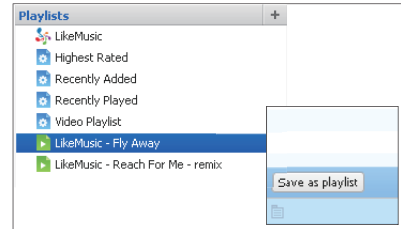
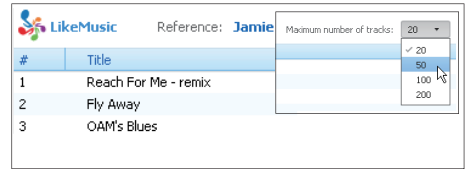
- In **Library > Music**, double click the blue **LikeMusic** icon of the song;

Alternatively,



- In **Library > Music**, right click on a song and select **Run LikeMusic with**.  
 ↳ A **LikeMusic** playlist is displayed in the **LikeMusic** page.

### Set the maximum number of songs



- Select a number in the drop-down list.

### Save the LikeMusic playlist

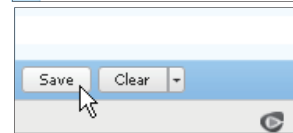
- Click **Save as playlist** in the **LikeMusic** page.  
 ↳ The **LikeMusic** playlist is saved under **Playlists**.

---

### Save the play queue as a playlist

#### Create a play queue

- Drag and drop songs or playlists to the **Play Queue** pane.



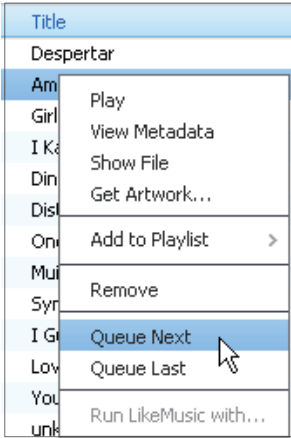
### Save the play queue as a playlist

- 1 Click **Save**.  
 ↳ The play queue is saved as a playlist under **Playlists**.

2 Under **Playlists**, name the playlist as needed.

**Add songs to the top or end of the play queue**

- To add songs to the top, right click on the options and select **Queue Next**;
- To add songs to the end, right click on the options and select **Queue Last**.

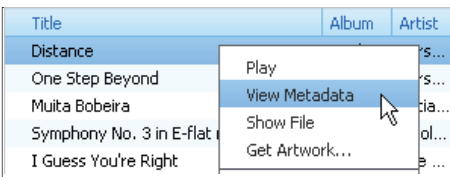


## Edit media files in Philips Songbird

### Edit metadata

By editing file information (metadata or ID3 tag), you can have media files sorted automatically by song title, artist, album, and other information.

After you sync the media files to the player, you can browse the media library by metadata.



1 In **Library > Music** or **Videos**, select a media file.

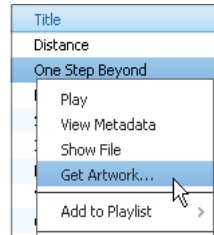
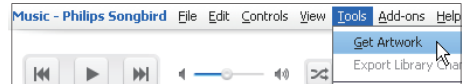
2 Right click on the file to select **View Metadata**.

↳ A metadata table appears for you to edit the information.

### Get album artwork

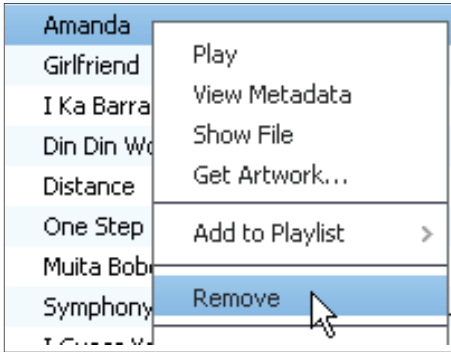
Artwork is sometimes available for music downloads. With **Philips Songbird**, you can insert artwork for songs.

After you sync the songs to some players, you can browse the media library by artwork.



- On **Philips Songbird**, select **Tools > Get Artwork**.  
↳ Artwork is fetched for all titles in the library.
- Right click on selected titles, and select **Get Artwork**.  
↳ Artwork is fetched for all selected titles.

## Remove media files from the library



- 1 Right click on a media file. Select **Remove**.
- 2 Confirm as prompted.
  - ↳ The selected file is removed from the library and from all playlists. (By default, the file is only "removed", not "deleted". The file still exists in its original location on the computer or computer network.)

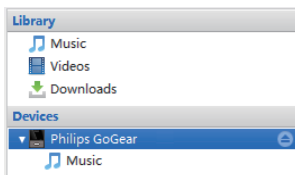
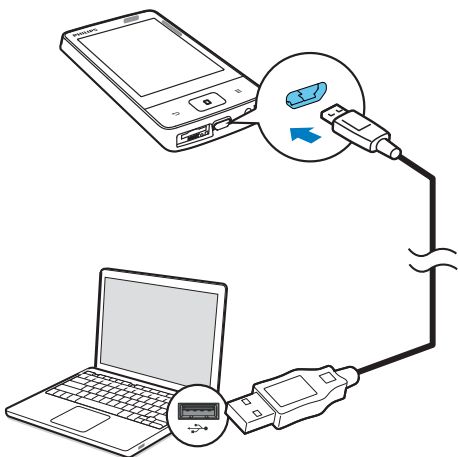


### Tip

- To select multiple files, hold down the **Ctrl** button when you click on selections.
- To select multiple consecutive files, hold down the **Shift** button when you click on the first and last selections.

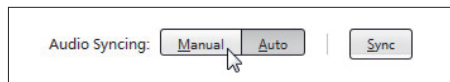
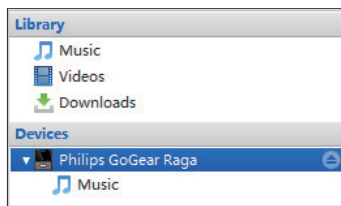
# 5 Sync the player with Philips Songbird

- 1 On the PC, launch **Philips Songbird**.
- 2 Connect the player to the PC by using a USB cable.
  - ↳ On **Philips Songbird**, the player is displayed when it is recognized by the PC.



If you didn't select auto sync, you switch on the manual sync.

To select auto or manual sync,



- 1 Select the player under **Devices**.
- 2 Select **Manual** or **Auto**.
- 3 To confirm the option, click **Apply**.

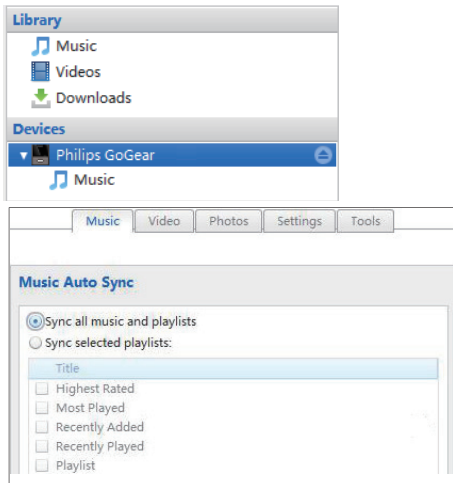
## Auto sync

- If you have selected auto sync, auto sync starts automatically when you connect the player to a PC;
- Alternatively, select the player under **Devices**, and click **Sync**.

To select auto sync settings,

## Select auto or manual sync

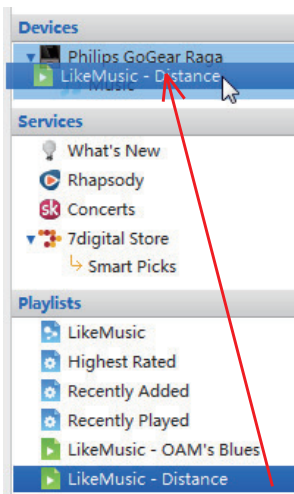
The first time you connect the player to **Philips Songbird**, select auto sync as prompted. The player sync with **Philips Songbird** automatically.



- 1 Select the player under **Devices**.
- 2 On the pop-up window, click the **Music** or **Videos** tab.
- 3 Click to select an option.

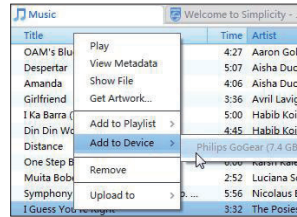
## Manual sync

To manually transfer selected playlists,



- 1 Select playlists.

2 Drag and drop the playlists to the player.  
To manually transfer selected media files,



- 1 On the Content pane, right click on a selected media file.
- 2 Select **Add to Device**, and then, the player:
  - ↳ Selected files are transferred to the player:
  - ↳ To select multiple files at the same time, hold down the **Ctrl** button when you click on selections.

# 6 Update the firmware through Philips Songbird

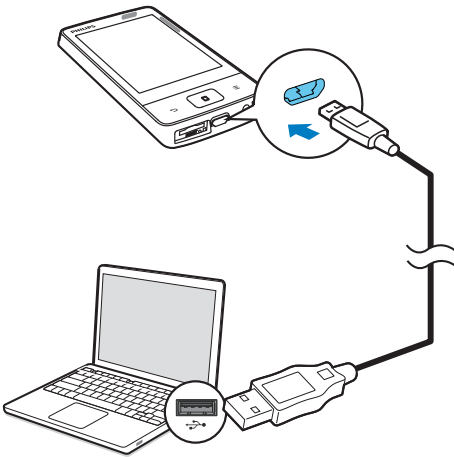
Philips MP3/ MP4 players are controlled by an internal program called firmware. Newer versions of the firmware may have been released after you have purchased Philips MP3/ MP4 players.

Through **Philips Songbird**, you can check for and install firmware updates for Philips MP3/ MP4 players over the Internet.

### Tip

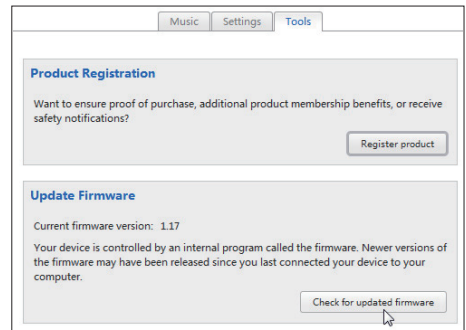
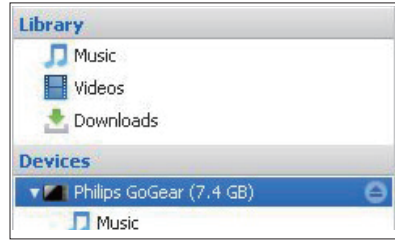
- Your music files are not affected by a firmware update.

- 1 Make sure that you have connected your PC to the Internet.
- 2 Connect your Philips MP3/ MP4 player to the PC by using a USB cable.



- 3 On the PC, launch **Philips Songbird**.

- 4 Click the Philips MP3/ MP4 player in the Player pane. Then, select **Tools > Check for updated firmware** in the pop-up window.
  - ↳ **Philips Songbird** checks for updates and installs new firmware from the Internet, if available.



- 5 Follow the onscreen instructions.
  - ↳ Downloading and installation of firmware update start automatically.
  - ↳ The Philips MP3/ MP4 player restarts after the firmware is updated and is ready for use again.

### Note

- Wait until the update is completed, then disconnect the Philips MP3/ MP4 player from the PC.



# 7 Repair the player through Philips Songbird



Tip

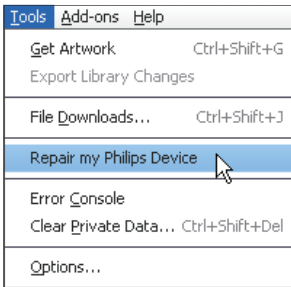
- Some Philips MP3/MP4 players are preloaded with the CD-ROM partition for **Philips Songbird** installer. After you repair the player, the CD-ROM partition and the **Philips Songbird** installer are removed from the player. More space is available on the player.

If your Philips MP3/ MP4 player is not working properly or the display freezes, you can reset it without losing data:

## To reset Philips MP3/MP4 player?

- Insert a pen tip or other object into the reset hole on your Philips MP3/ MP4 player. Hold until the player shuts down.

If you fail to reset the player, repair the player through Philips Songbird:



- 1 On your PC, launch **Philips Songbird**.
- 2 In **Philips Songbird**,
  - select **Tools > Repair my Philips Device**;
  - select your MP3/ MP4 player in the pop-up list.
- 3 Connect the player to the PC.
  - **Make sure that you follow the onscreen instructions on how to connect the player to the PC.**
- 4 Follow the onscreen instructions to complete the repair.



Specifications are subject to change without notice  
© 2012 Koninklijke Philips Electronics N.V.  
All rights reserved.