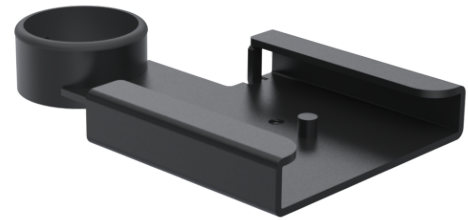


SP1 Mounting for Zebra/Motorola Scanner DS9208 - 02 SPV3603-02



SP1 Mounting for Motorola Scanner DS9208

Easy use and installation 5-year warranty



Product Specifications

Colour Name	Black
Colour Type	Structured
Device Brand	Zebra
Compatible device name	DS9208
Main material	Metal
Product Version	1.0
Screws included	No
Units per Box	1
Unit Weight	0.32 kg
Box Weight	0.4 kg
Warranty	5 Years

Product Dimensions

Unit Depth	155.2 mm
Unit Height	22.6 mm
Unit Weight	0.32 kg

Package Dimensions

Box Depth	150 mm
Box Height	135 mm
Box Width	115 mm



www.ergonomic.solutions