

PHILIPS



Dimmer switch

Hue

Wireless installation

Battery powered



046677458140



Control your lights

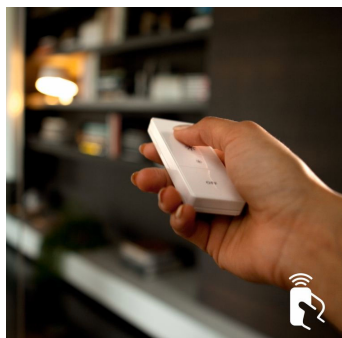
Enrich your system with the Philips Hue dimmer switch and enjoy smooth wireless dimming. The switch works as a normal wall switch and dimmer. Place it anywhere you want, using screws or the adhesive tape on the back plate of the switch.

Easy control

- Use as a remote control
- Dim your Philips Hue lights
- Place it where it matters
- No wires - battery powered
- Switch between scenes
- Requires a Philips Hue bridge

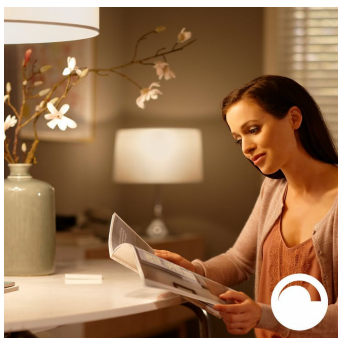
Highlights

Use as a remote control



Pick up the remote and use it wherever you want for your comfort. The control unit of the switch is magnetic and can be removed from the base plate.

Dim your Philips Hue lights



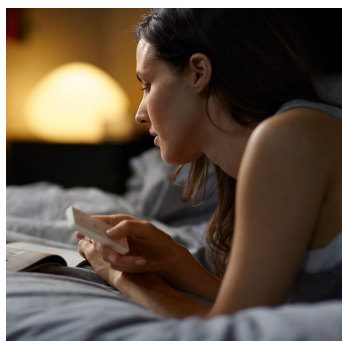
Using the Philips Hue dimmer switch, you can smoothly dim your favorite light setting up and down

Place it anywhere



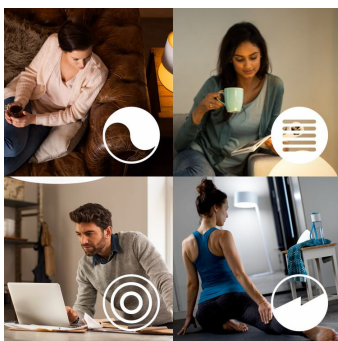
The Philips Hue dimmer switch works as a normal wall switch and dimmer. You can place it anywhere you want, using screws or the adhesive tape on the back plate of the switch

No wires - battery powered



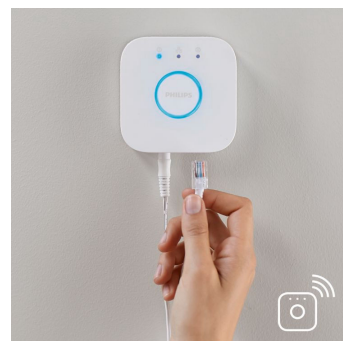
The Philips Hue dimmer switch is battery-powered, so there is no installation required

Switch between scenes



When using your dimmer switch with Philips Hue white ambiance or Philips Hue white and color ambiance products, you can use the on-button to switch between 4 light recipes, or use the Philips Hue app to configure your favorite 4 scenes. It's all up to you

Requires a Philips Hue bridge



This product requires a connection to the Philips Hue bridge

Specifications

Environmental

- Operational humidity: 5% <H<95% (non condensing)
- Operational temperature: -10°C – 45°C

Extra feature/accessory incl.

- Portable: Yes

Guarantee

- 2 years: Yes

Service

- Warranty: 2 year(s)

Technical specifications

- Number of configurable buttons: 2
- Weight: 37
- IP code: IP20 | Finger-protected

The switch

- Batteries included: 1 x CR2450
- Configurable buttons: 2
- Frequency band: 2400 - 2483.5 MHz
- Lifetime: 50000 clicks
- Max. lights per switch: 50 (with Hue Bridge)
- Minimal battery lifetime: 3 year(s)
- Mounting options: wall, freestanding
- Software upgradeable: when connected to Hue bridge
- Weight including wall plate: 67 g
- Weight of switch: 37 g
- Zigbee Light link: IEEE 802.15.4 Protocol
- Minimal range indoor: 500 inch
- Switch depth: 0.43 inch
- Switch height: 3.6 inch
- Switch width: 1.38 inch
- Wall plate width: 4.5 inch

What's in the box

- Hue dimmer switch: 1

What's supported

- Compatible with Effects: Yes
- Philips Hue App: IOS 15 and above, Android 10.0 and above
- Voice assistants (Hue Bridge required): Amazon Alexa, Google Assistant, Apple Home, Microsoft Cortana
- WiFi: Works without Wi-Fi
- Defined support period: Minimum of 48 months after introduction date
- Max. number of accessories: 12 (with Hue Bridge)
- Communication protocol: Bluetooth, Zigbee

Box specifications

Packaging dimensions and weight

- EAN/UPC - product: 046677458140
- Net weight: 0.07 kg
- Gross weight: 0.13 kg
- Height: 16.5 cm
- Length: 7.5 cm
- Width: 8.8 cm



© 2025 Signify Holding. All rights reserved. Signify does not give any representation or warranty as to the accuracy or completeness of the information included herein and shall not be liable for any action in reliance thereon. The information presented in this document is not intended as any commercial offer and does not form part of any quotation or contract, unless otherwise agreed by Signify. Philips and the Philips Shield Emblem are registered trademarks of Koninklijke Philips N.V.