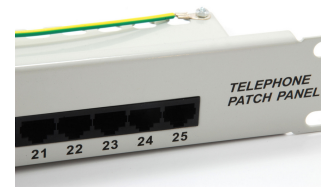
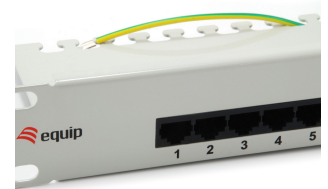


125296 25-Port Cat.3 RJ45 ISDN Patch Panel, Light Grey

Product Images



Short Description

1. 19", 1U
2. Unshielded
3. 25 Ports x Cat.3 RJ45
4. ISO/IEC 11801, EN 50173
5. IDC T568A/T568B Color Coded
6. Telephone distribution panel
7. Dual IDC (LSA and 110) compatible
8. Color: Light Grey (RAL 7035)

Description

The equip® ISDN Patch Panel is a 19"1U telephone distribution unit integrating cable management system for better routing and strain relief requirements, suitable for both LSA and 110 standards. Moreover, each port is marked with port number for recognition

Additional Information

Approval and compliance	RoHS
Material	Metal
Mount	19" rack mount
Null panel	No
Category	Cat.3
Shielded	No
Product weight (kg)	1,05
Color	Grey
EAN	4015867207482
Model number	125296
Package contents	125296 Screw pack
Cat.3 RJ45	25
Ports	25 Ports
Dimensions (W x D x H)	483 x 100 x 44.5 mm

