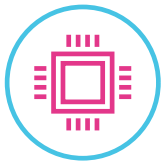


ideacentre 510S

THE ESSENTIAL FAMILY DESKTOP.

Before buying a PC for your home, you may want to consider a few things: Is it easy to use for both young and old alike? Does it have the power, memory, and storage capacity to meet all your family's computing needs? Does it have a DVD drive? And how affordable is it? Then take a look at the ideal family desktop, the Lenovo™ IdeaCentre™ 510S.

WHY YOU SHOULD BUY THE LENOVO IDEACENTRE 510S



Impressive power, superb speed

Powered by up to 8th Generation Intel® Core™ i7 processing, the IdeaCentre 510S delivers blazingly fast responsiveness. Boot up faster, open multiple programs and multi-task with ease.



Call all the shots

Select a hard disk of up to 2 TB or a solid state drive that can hold up to 256 GB. And with up to 16 GB memory, you'll be able to boot-up faster, run multiple programs at the same time, and multitask like a pro.



Lenovo™



Game on

Speed-up your PC multimedia experience. Upgrade to the new NVIDIA® GeForce® GT 730 dedicated graphics card and get super-fast web browsing, plus incredible photo and video editing. The GT 730 also delivers 3x faster gaming performance than integrated graphics while delivering rock-solid reliability and stability with GeForce® Experience™.



Ports aplenty

Your monitor, keyboard, external hard drive, camera and favorite speakers don't need to vie for available ports on the IdeaCentre 510S. This machine offers multiple ways to connect. Easily upload, transfer, display and play your media.



WWW.LENOVO.COM



ideacentre 510S

SPECIFICATIONS

Lenovo IdeaCentre 510S-07ICB*

PERFORMANCE

Processor

8th Generation Intel® Core™ i7 Processor
8th Generation Intel® Core™ i5 Processor
8th Generation Intel® Core™ i3 Processor
Intel® Pentium® Gold Processor
Intel® Celeron® Processor

Operating System

Windows 10 Home

Graphics

NVIDIA® GeForce® GT 730
Intel® UHD Graphics 630
Intel® UHD Graphics 610

Memory

16 GB DDR4 Dual Channel
8 GB DDR4
4 GB DDR4

Storage

128 GB/256 GB PCIe SSD
1 TB/2 TB SATA HDD

DESIGN

Volume

7.4 Liter

Dimensions (W x D x H)

(mm) : 288.5 x 270 x 100
(inches): 11.36" x 10.63" x 3.94"

Weight (Gross)

Starting at 14.64 lbs (6.64 kg)

Color

Warm Silver

CONNECTIVITY

WLAN

2 x M.2 WLAN (1 x WiFi; 1 x M.2 SSD)

LAN

1000M

Bluetooth®

Bluetooth® 4.0

Input/Output (I/O) Ports

Front Ports

2 x USB 3.1
2 x USB 3.0
Microphone-In
Microphone/Audio Combo
7-in-1 Card Reader

Rear Ports

HDMI™
VGA
DP
Serial Port
Audio Line-Out
2 x USB 2.0
2 x USB 3.0

PRELOADED SOFTWARE

- Lenovo Vantage
- Microsoft Office 2016
- McAfee LiveSafe™
- Lenovo App Explorer
- CyberLink Power2Go/Power2Go*



* With DVD drive.

LENOVO SERVICES

Warranty Upgrades - On-site / In-Home Service

Maximizes PC uptime and productivity by providing convenient, fast repair services in your own home.

Accidental Damage Protection

Avoid the hassles of unexpected repair costs. Provides coverage for non-warranted damage incurred under normal operating conditions, such as minor spills, drops or damage to the integrated screen.

Warranty Extensions (1-to-3 Years Total Duration)

This fixed-term, fixed-cost service helps accurately budget for PC expenses, protect your valuable investment and potentially lower the cost of ownership over time.

* Example of
Lenovo IdeaCentre
catalogue naming
convention



Intel® platform codes

Haswell H81: IHH, Broadwell U: IBU, Skylake Z170: ISZ, Skylake B150: ISB, Kabylake: IKL, Skylake H110/H170: ISH, Skylake U: ISU, Apollo Lake: IAP, Kabylake H110: IKH, Coffee Lake B360: ICB, Coffee Lake H: ICH, Coffee Lake Z370 Overclock: ICO

OPTIONS & ACCESSORIES



Lenovo 500
Wireless Combo
Keyboard & Mouse



WWW.LENOVO.COM

Lenovo reserves the right to alter product offerings and specifications at any time, without notice. Lenovo makes every effort to ensure accuracy of all information but is not liable or responsible for any editorial, photographic or typographic errors. All images are for illustration purposes only. For full Lenovo product, service and warranty specifications visit www.lenovo.com. Lenovo makes no representations or warranties regarding third party products or services. **Trademarks:** The following are trademarks or registered trademarks of Lenovo: Lenovo, the Lenovo logo, ideapad, IdeaCentre, yoga and yoga home. Microsoft, Windows and Vista are registered trademarks of Microsoft Corporation. Ultrabook, Celeron, Celeron Inside, Core Inside, Intel, Intel Logo, Intel Atom, Intel Atom Inside, Intel Core, Intel Inside, Intel vPro, Itanium, Itanium Inside, Pentium, Pentium Inside, vPro Inside, Xeon, Xeon Phi, and Xeon Inside are trademarks of Intel Corporation in the U.S. and/or other countries. Other company, product and service names may be trademarks or service marks of others. Visit www.lenovo.com/lenovo/us/en/safecomp/ periodically for the latest information on safe and effective computing. ©2018 Lenovo. All rights reserved.



Lenovo™