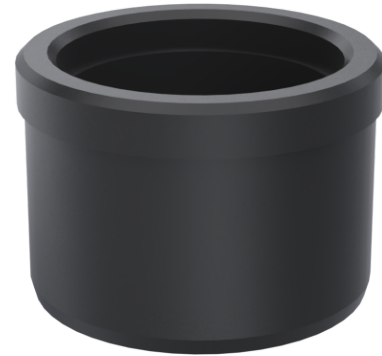


SP2 Adapter for Toshiba TCx 2x20 display
TL751/2 & FC-5988 - 02
SPV3214-02



SP2 Adapter for Toshiba TCx 2x20 display TL751/2 & FC-5988E -
Essentials Range

Easy to mount 2-year warranty



Product Specifications

Colour Name	Black
Colour Type	Structured
Device Brand	Toshiba
Compatible device name	TCx2x20 display TL751-2/FC-5988
Main material	Plastic
Product Version	1.0
Height adjustable?	No
Screws included	No
Units per Box	18
Unit Weight	0.02 kg
Box Weight	0.62 kg
Warranty	2 Years

Product Dimensions

Unit Depth	43 mm
Unit Height	29.5 mm
Unit Weight	0.02 kg

Package Dimensions

Box Depth	264 mm
Box Height	183 mm
Box Width	214 mm



www.ergonomic.solutions