



Philips
LCD monitor

B Line
27" (68.6 cm)
1920 x 1080 (Full HD)

271B8QJKEB



Clear image, efficient performance

for maximum productivity

Get your best work done with the Philips 27" Full HD monitor. Crisp and vivid Full HD gives you the space and clarity to see your work. Features like height adjustment, Flicker-free and LowBlue mode make work easy on the eyes.

Brilliant performance

- IPS technology for full colours and wide viewing angles
- 16:9 Full HD display for crisp, detailed images
- SmartImage pre-sets for easy optimised image settings

Designed for comfortable productivity

- LowBlue Mode for easy-on-the-eyes productivity
- Less eye fatigue with Flicker-Free technology
- SmartErgoBase enables user-friendly ergonomic adjustments
- EasyRead mode for a paper-like reading experience

Features for the way you work

- Built-in stereo speakers for multimedia
- USB 3.0 enables fast data transfers and smart phone charging
- Webcam pops up when you need it; secures down when you don't

Sustainable Eco-design

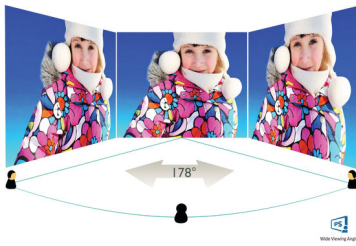
- Designed to meet environmental standards

PHILIPS

LCD monitor
B Line 27" (68.6 cm), 1920 x 1080 (Full HD)

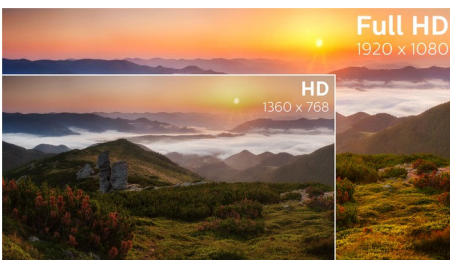
Highlights

IPS technology



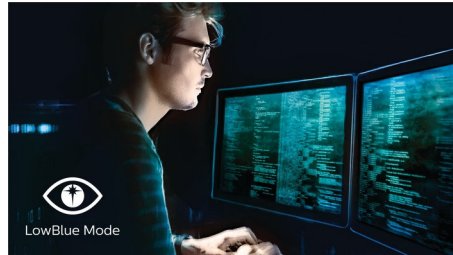
IPS displays use advanced technology that gives you extra-wide viewing angles of 178/178 degrees, making it possible to view the display from almost any angle — even in 90-degree Pivot mode! Unlike standard TN panels, IPS displays gives you remarkably crisp images with vivid colours, making it ideal not only for Photos, films and web browsing, but also for professional applications that demand colour accuracy and consistent brightness at all times.

16:9 Full HD display



Picture quality matters. Regular displays deliver quality, but you expect more. This display features enhanced Full HD 1920 x 1080 resolution. With Full HD for crisp detail paired with high brightness, incredible contrast and realistic colours, expect a true-to-life picture.

LowBlue Mode



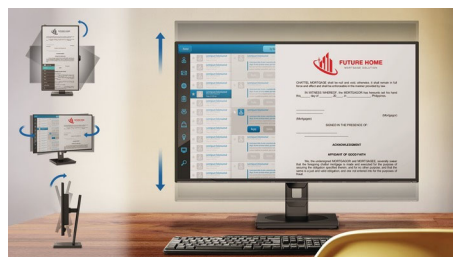
Studies have shown that just as ultra-violet rays can cause eye damage, shortwave-length blue light rays from LED displays can cause eye damage and affect vision over time. Developed for wellbeing, the Philips LowBlue Mode setting uses a smart software technology to reduce harmful shortwave blue light.

Flicker-Free technology



Due to the way brightness is controlled on LED-backlit screens, some users experience flicker on their screen which causes eye fatigue. Philips Flicker-Free technology applies a new solution to regulate brightness and reduce flicker for more comfortable viewing.

SmartErgoBase



The SmartErgoBase is a monitor base that delivers ergonomic display comfort and provides cable management. The user-friendly height, swivel, tilt and rotation angle

271B8QJKEB/00

adjustments of the base allow the monitor to be positioned for maximum comfort to help ease the physical strains of a long workday. In addition, cable management reduces cable clutter and keeps the workspace neat and professional.

EasyRead mode



EasyRead mode for a paper-like reading experience

Built-in stereo speakers



A pair of high-quality stereo speakers built into a display device. They may be visible front firing, or invisible down firing, top firing, rear firing etc. depending on model and design.

Pop-up webcam



Webcams are great for connecting with others and collaborating on that important project. Sometimes, though, you don't want a webcam looking down on your desk. Our ingenious new pop-up webcam design pops up when it's time for meetings and for security tucks away nicely when you are not using it.



Specifications

Picture/Display

- LCD panel type: IPS technology
- Adaptive sync
- Backlight type: W-LED system
- Panel Size: 27 inch/68.6 cm
- Display Screen Coating: Anti-Glare, 3H, Haze 25%
- Effective viewing area: 597.89 (H) x 336.31 (V)
- Aspect ratio: 16:9
- Optimum resolution: 1920 x 1080 @ 60 Hz
- Pixel Density: 82 PPI
- Response time (typical): 5 ms (Grey to Grey)*
- Brightness: 250 cd/m²
- Contrast ratio (typical): 1000:1
- SmartContrast: 50,000,000:1
- Pixel pitch: 0.311 x 0.311 mm
- Viewing angle: 178° (H)/178° (V), @ C/R > 10
- Flicker-free
- Picture enhancement: SmartImage
- Colour gamut (typical): NTSC 78%*, sRGB 100%*
- Display colours: 16.7 M
- Scanning Frequency: 30–83 kHz (H)/50–76 Hz (V)
- sRGB
- EasyRead
- LowBlue Mode

Connectivity

- Signal Input: VGA (Analogue), DVI-D (digital), HDCP), DisplayPort 1.2, HDMI 1.4
- USB: USB 3.1 x 2 (1 w/fast charging)*, USB 2.0 x 1
- Sync Input: Separate Sync, Sync on Green
- Audio (In/Out): PC audio-in, Headphone out

Convenience

- Built-in Speakers: 2 W x 2
- Built-in webcam: 2.0 megapixel FHD camera with microphone and LED indicator
- User convenience: SmartImage, Input, Brightness, Menu, Power On/Off
- Control software: SmartControl
- OSD Languages: Brazil Portuguese, Czech, Dutch, English, Finnish, French, German, Greek, Hungarian, Italian, Japanese, Korean, Polish, Portuguese, Russian, Simplified Chinese, Spanish, Swedish, Traditional Chinese, Turkish, Ukrainian
- Other convenience: Kensington lock, VESA mount (100 x 100 mm)
- Plug and Play Compatibility: DDC/CI, Mac OS X, sRGB, Windows 10 / 8.1 / 8 / 7

Stand

- Height adjustment: 150 mm
- Pivot: -/+ 90 degree
- Swivel: -175/175 degree
- Tilt: -5/30 degree

Power

- ECO mode: 11.5 W (typ.)
- On mode: 14.99 W (typ.) (EnergyStar test method)
- Standby mode: < 0.5 W (typ.)
- Off mode: Zero watts with Zero switch
- Energy Label Class: D
- Power LED indicator: Operation - White, Standby mode - White (flashing)
- Power supply: Built-in, 100–240 VAC, 50–60 Hz

Dimensions

- Product with stand (max height): 625 x 552 x 224 mm
- Product without stand (mm): 625 x 370 x 51 mm
- Packaging in mm (W x H x D): 699 x 454 x 242 mm

Weight

- Product with stand (kg): 6.91 kg
- Product without stand (kg): 4.49 kg
- Product with packaging (kg): 9.89 kg

Operating conditions

- Temperature range (operation): 0°C to 40°C °C
- Temperature range (storage): -20°C to 60°C °C
- Relative humidity: 20%-80 %
- Altitude: Operation: +12,000 ft (3658 m), Non-operation: +40,000 ft (12,192 m)
- MTBF (demonstrated): 70,000 hrs (excluded backlight)

Sustainability

- Environmental and energy: EnergyStar 8.0, EPEAT*, TCO Certified Edge, RoHS, WEEE
- Recyclable packaging material: 100 %
- Post-consumer recycled plastic: 85%
- Specific Substances: PVC/BFR free housing, Mercury free

Compliance and standards

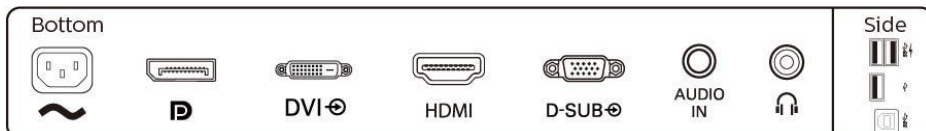
- Regulatory Approvals: CE Mark, FCC Class B, SEMKO, cETLus, CU-EAC, EPA, UKRAINIAN, ICES-003, TUV Ergo, TUV/GS

Cabinet

- Front bezel: Black
- Rear cover: Black
- Foot: Black
- Finish: Texture

What's in the box?

- Monitor with stand
- Cables: D-Sub cable, HDMI cable, DP cable, USB cable, Audio cable, Power cable
- User Documentation



Issue date 2021-05-26

Version: 3.0.1

12 NC: 8670 001 57929
EAN: 87 12581 75676 5

© 2021 Koninklijke Philips N.V.
All Rights reserved.

Specifications are subject to change without notice.
Trademarks are the property of Koninklijke Philips N.V.
or their respective owners.

www.philips.com

* "IPS" word mark / trademark and related patents on technologies belong to their respective owners.
* Fast charging complies with USB BC 1.2 standard
* Response time value equal to SmartResponse
* NTSC Area based on CIE 1976
* sRGB Area based on CIE1931
* EPEAT rating is valid only where Philips registers the product. Please visit <https://www.epeat.net/> for registration status in your country.
* The monitor may look different from feature images.