



CoreLine Waterproof

WT120C LED80S/840 PSD L1500

Coreline Waterproof – – – 840 neutral white – Power supply unit with DALI interface – –

Whether for a new building or renovation of an existing space, customers want lighting solutions that provide quality of light and substantial energy and maintenance savings. The new CoreLine Waterproof range of LED products can be used to replace traditional waterproof luminaires with fluorescent lamps. The process of selecting, installing and maintaining is so easy – it's a simple switch.;InterAct Ready luminaires with integrated wireless communications in this family available, to be used with InterAct gateways, sensors and software.

Product data

| General Information | | | |
|-------------------------------|---------------------------------------|--|---|
| Number of light sources | - | Connection | Push-in connector 5-pole |
| Lamp family code | - | Cable | - |
| Beam angle of light source | 120 ° | Protection class IEC | Safety class I |
| Light source color | 840 neutral white | Glow-wire test | Temperature 850 °C, duration 30 s |
| Cap-Base | - [-] | Flammability mark | For mounting on easily flammable surfaces |
| Light source replaceable | No | CE mark | CE mark |
| Number of gear units | 1 unit | ENEC mark | ENEC mark |
| Gear | - | Warranty period | 5 years |
| Driver/power unit/transformer | Power supply unit with DALI interface | Remarks | Please download the Lighting - Product Data Sheet for more information and ordering options |
| Driver included | Yes | Constant light output | No |
| Optic type | - | Number of products on MCB of 16 A type B | 18 |
| Optical cover/lens type | - | RoHS mark | RoHS mark |
| Luminaire light beam spread | 110° | Serviceability class | - |
| Emergency lighting | - | Product family code | WT120C [Coreline Waterproof] |
| Control interface | DALI | | |

CoreLine Waterproof

| | |
|--------------------------|----|
| Unified glare rating CEN | 26 |
|--------------------------|----|

Operating and Electrical

| | |
|--------------------|--------------|
| Input Voltage | 220 to 240 V |
| Input Frequency | 50 to 60 Hz |
| Inrush current | 4.5 A |
| Inrush time | 1 ms |
| Power Factor (Min) | 0.9 |

Controls and Dimming

| | |
|----------|-----|
| Dimmable | Yes |
|----------|-----|

Mechanical and Housing

| | |
|-----------------------------|-----------------|
| Housing Material | Polycarbonate |
| Reflector material | Steel |
| Optic material | - |
| Optical cover/lens material | Polycarbonate |
| Gear tray material | NO |
| Fixation material | Stainless steel |
| Optical cover/lens finish | Textured |
| Overall length | 1530 mm |
| Overall width | 87 mm |
| Overall height | 96 mm |
| Color | Gray |

Approval and Application

| | |
|------------------------------|---|
| Ingress protection code | IP65 [Dust penetration-protected, jet-proof] |
| Mech. impact protection code | IK08 [5 J vandal-protected] |

Initial Performance (IEC Compliant)

| | |
|-------------------------------------|----------|
| Initial luminous flux (system flux) | 8000 lm |
| Luminous flux tolerance | +/-10% |
| Initial LED luminaire efficacy | 118 lm/W |

| | |
|-------------------------------|----------------------|
| Init. Corr. Color Temperature | 4000 K |
| Init. Color Rendering Index | ≥80 |
| Initial chromaticity | (0.38, 0.38) SDCM <3 |
| Initial input power | 68 W |
| Power consumption tolerance | +/-10% |

Over Time Performance (IEC Compliant)

| | |
|---|---------|
| Control gear failure rate at median useful life 50000 h | 5 % |
| Median useful life L70B50 | 50000 h |
| Median useful life L80B50 | 30000 h |
| Median useful life L90B50 | 15000 h |
| Lumen maintenance at median useful life* 50000 h | L75 |

Application Conditions

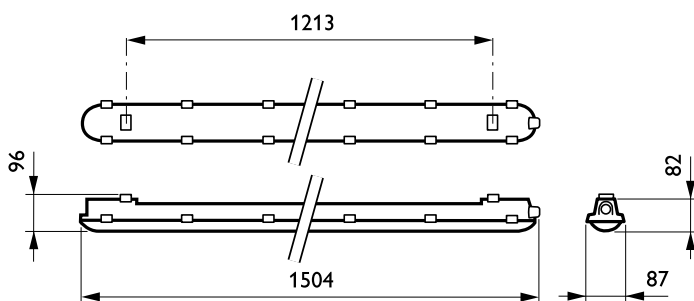
| | |
|------------------------------------|---|
| Ambient temperature range | -25 to +35 °C |
| Performance ambient temperature Tq | 25 °C |
| Maximum dim level | 1% |
| Suitable for random switching | Yes (relates to presence/ movement detection and daylight harvesting) |

Product Data

| | |
|---------------------------------|-----------------------------|
| Full product code | 871869940929600 |
| Order product name | WT120C LED80S/840 PSD L1500 |
| EAN/UPC - Product | 8718699409296 |
| Order code | 910500465652 |
| Numerator - Quantity Per Pack | 1 |
| Numerator - Packs per outer box | 1 |
| Material Nr. (12NC) | 910500465652 |
| Net Weight (Piece) | 1.820 kg |

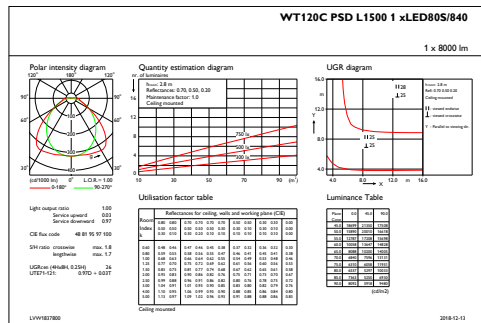


Dimensional drawing

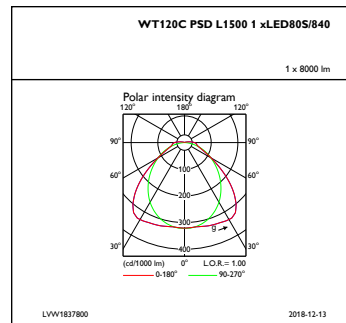


CoreLine Waterproof WT120C

Photometric data



IFGU1_WT120CPSDL15001xLED80S840



IFPC1_WT120CPSDL15001xLED80S840

