



CoreLine Waterproof

WT120C LED80S/840 PSU L1500

Coreline Waterproof – – 840 neutral white – Power supply unit

– –

Whether for a new building or renovation of an existing space, customers want lighting solutions that provide quality of light and substantial energy and maintenance savings. The new CoreLine Waterproof range of LED products can be used to replace traditional waterproof luminaires with fluorescent lamps. The process of selecting, installing and maintaining is so easy – it's a simple switch. Also available as an Interact Ready wireless CoreLine waterproof luminaire that works with Interact Pro lighting software and Interact Ready devices to provide a connected lighting system for SMEs

Product data

General Information			
Lamp family code	-	Cable	-
Beam angle of light source	120 °	Protection class IEC	Safety class I
Light source colour	840 neutral white	Glow-wire test	Temperature 850 °C, duration 30 s
Cap base	- [-]	Flammability mark	D [For mounting on easily flammable surfaces]
Light source replaceable	No	CE mark	CE mark
Number of gear units	1 unit	ENEC mark	ENEC mark
Gear	-	UL mark	No
Driver/power unit/transformer	PSU [Power supply unit]	Warranty period	5 years
Driver included	Yes	Remarks	Please download the Lighting - Product Data Sheet for more information and ordering options
Optic type	No [-]	Constant light output	No
Luminaire light beam spread	110°	Number of products on MCB	18
Emergency lighting	No [-]	RoHS mark	RoHS mark
Control interface	-		
Connection	Push-in connector 3-pole		

CoreLine Waterproof

Product Family Code	WT120C [Coreline Waterproof]
Unified glare rating CEN	26

Operating and Electrical

Input voltage	220 to 240 V
Input frequency	50 to 60 Hz
Inrush current	6.02 A
Inrush time	0.065 ms
Power factor (min.)	0.9

Controls and Dimming

Dimmable	No
----------	----

Mechanical and Housing

Housing material	Polycarbonate
Reflector material	Steel
Optic material	-
Optical cover/lens material	Polycarbonate
Gear tray material	NO
Fixation material	Stainless steel
Optical cover/lens finish	Textured
Overall length	1530 mm
Overall width	87 mm
Overall height	96 mm
Colour	Grey

Approval and Application

Ingress protection code	IP65 [Dust penetration-protected, jet-proof]
Mech. impact protection code	IK08 [5 J vandal-protected]

Initial Performance (IEC Compliant)

Initial luminous flux	8000 lm
Luminous flux tolerance	+/-10%
Initial LED luminaire efficacy	118 lm/W

Init. Corr. colour temperature	4000 K
Init. colour rendering index	≥80
Initial chromaticity	(0.38, 0.38) SDCM <3
Initial input power	68 W
Power consumption tolerance	+/-10%

Over Time Performance (IEC Compliant)

Control gear failure rate at median useful life 50000 h	5 %
Median useful life L70B50	50000 h
Median useful life L80B50	30000 h
Median useful life L90B50	15000 h
Lumen maintenance at median useful life* 50000 h	L75

Application Conditions

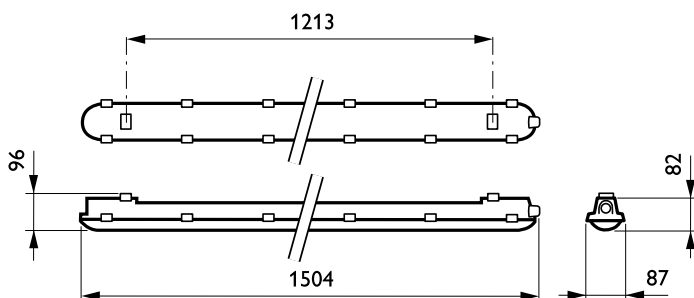
Ambient temperature range	-25 to +35 °C
Performance ambient temperature Tq	25 °C
Maximum dimming level	Not applicable
Suitable for random switching	Yes (relates to presence/ movement detection and daylight harvesting)

Product Data

Full product code	871869940928900
Order product name	WT120C LED80S/840 PSU L1500
EAN/UPC – product	8718699409289
Order code	40928900
Numerator – quantity per pack	1
Numerator – packs per outer box	1
Material no. (12NC)	910500465651
Net weight (piece)	1.820 kg

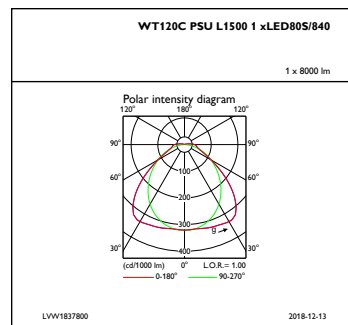
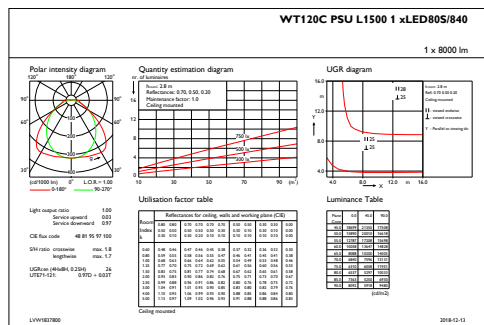


Dimensional drawing



CoreLine Waterproof WT120C

Photometric data



IFGU1_WT120CPSUL15001xLED80S840

IFPC1_WT120CPSUL15001xLED80S840

