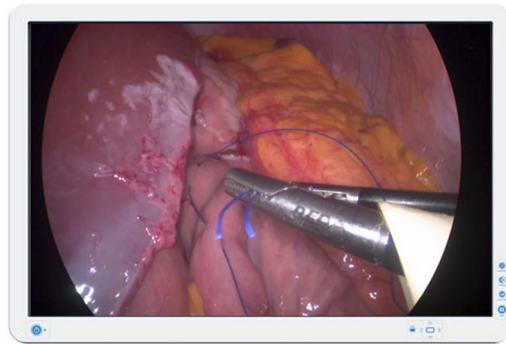


AMM240ED

24" surgical display



Barco's AMM240ED is a 24-inch near-patient surgical display with LED backlights, featuring a 1920 x 1200 resolution. Purpose-built for endoscopy imaging, the AMM240ED is a cost-effective but extremely reliable display. Surgical video and images can be placed in Picture-by-Picture mode with independent adjustments.

Allround connectivity

The AMM240ED supports a broad range of input types including DVI, VGA, RGB, Component & Composite Video as well as HD/SD SDI.

Safety guaranteed

Thanks to the sealed design (rated IP22), a protective filter and cable cover, the AMM240ED is safe for use near patients. It also ensures safe and easy mounting onto surgical arms thanks to the VESA compliance. Needless to say, the AMM240ED complies with all the latest medical standards.

PRODUCT SPECIFICATIONS**AMM240ED**

Screen technology	TFT AM LCD / LED Backlight
Active screen size (diagonal)	611.3 mm (24.07")
Active screen size (H x V)	520.4 x 326 mm (20.46 x 12.83")
Aspect ratio	16:10
Resolution	1920 x 1200
Pixel pitch	0.27 mm
Color support	16.7 Mio (8 bit)
Viewing angle	178° Hor /178° Ver
Luminance	300 cd/m ²
Contrast ratio	1000:1
Gamma curve	1.8, 1.9, 1.95, 2.1,2.2, 2.3, 2.4
Front protection screen	anti-reflective PMMA protective cover
Video input signals	1xDVI-I, 1x HD15, 1x Y/C, 1x 3G-SDI, 1x RGBS / YPbPr,
Video output signals	1x DVI-I, 1x 3G-SDI
Features	Picture in Picture
External power supply	AC input : 90-264 VAC / 47-63 Hz auto-switch DC Output : \pm 24VDC / 1.7A
Dimensions w/o stand (W x H x D)	570 x 386.9 x 63.2 mm (22,4 x 15,2 x 2,5")
Net weight w/o stand	7.35 Kg
Mounting standard	75x75 VESA / 100x100 mm VESA
Temperature	Operating : 10°-40°C Storage : -18°-60°C
Humidity	Operating : 25%-75% non-condensing Storage : 15%-90% non-condensing
Compliance	Medical Safety Compliance: IEC 60601-1: 2012 Edition 3.1 EN 60601-1: 2006 +A1:2013 ANSI/AAMI ES 60601-1: 2005/(R)2012 A1:2012, C1:2009/(R)2012 and A2:2010/(R)2012 CAN/CSA-C22.2 No. 60601-1: 14 AS/NZS 3200-1:1988 CCC (GB4943.1-2011) CB-ITE (IEC 60950-1:2005 (2nd Ed); Am1:2009 +Am2:2013
Protection rating	IP22
Green compliance	ROHS-2, REACH, WEEE
Warranty	2 years

Last updated: 20 Dec 2018Technical specifications are subject to change without prior notice. Please check www.barco.com for the latest information.