

# LEGION T730

## SAVAGE POWER, UNLEASHED.

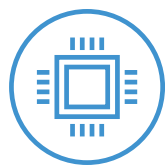
This 28 liter desktop gives you the style and power you demand in a gaming tower, thanks to a customizable RGB LED system lighting, a transparent side panel, optional liquid cooling, and extreme processing and graphics power with overclocking options to completely immerse you in your favorite titles. One look and you'll know why the Lenovo™ Legion T730 Desktop is engineered for greatness.

### WHY YOU SHOULD BUY THE LENOVO LEGION T730



#### Refined on the outside

A refined front grill accenting a redesigned 28 liter Raven Black Chassis with RGB system lighting, a transparent side panel and tool-free upgrade system come standard on our T730.



#### Powerful gaming performance

Raw gaming performance is unleashed on our T730 via up to 8<sup>th</sup> Generation Intel® Core™ K processors, NVIDIA® GeForce® graphics, Corsair® Overclocked memory, and more.



#### Keep it cool, keep it quiet

The Lenovo Legion T730 was engineered to eliminate heat via its dual-channel thermal system with optional liquid cooling for an epicly cool and quiet gaming experience.



#### Performance you can see

Full internal and external RGB system lighting deliver over 16.8 million color combinations and effects for a system that is truly a feast for your eyes.



[WWW.LENOVO.COM](http://WWW.LENOVO.COM)



Lenovo™

# LEGION T730

## SPECIFICATIONS

Lenovo Legion T730-28ICO\*

### PERFORMANCE

#### Processor

8<sup>th</sup> Generation Intel® Core™ i7-8700K Processor  
8<sup>th</sup> Generation Intel® Core™ i7-8700 Processor  
8<sup>th</sup> Generation Intel® Core™ i5-8400 Processor

#### Operating System

Windows 10 Pro  
Windows 10 Home

#### Graphics

NVIDIA® GeForce® GTX 1060; 6 GB  
AMD Radeon™ RX 570; 4 GB

#### Memory

Up to 32 GB DDR4  
Up to 32 GB DDR4 Overclocked Corsair®  
Vengeance (18Q3)

#### Storage

Up to 512 GB M.2 PCIe SSD and  
2 x 2 TB SATA HDD

#### Audio

Dolby Atmos® Effect and Sound Radar

#### PSU

450W - ES ATX PSU

### DESIGN

#### Volume

28 L

#### Dimensions (W x D x H)

(mm) : 184.5 x 408 x 363  
(inches) : 7.26" x 16.06" x 14.29"

#### Weight

Starting at 26.4 lbs (12 kg)

#### VR Ready

NVIDIA® VR Ready /  
AMD VR Ready

#### Color

Raven Black

### CONNECTIVITY

#### Input/Output (I/O) Ports<sup>1</sup>

##### Front Ports

2 x USB 3.0  
1 x Headset  
1 x Microphone-In

##### Rear Ports

4 x USB 3.0  
2 x USB 2.0  
1 x RJ45  
1 x Audio-Out

##### GFX Ports

Depends on GFX Define

### PRELOADED SOFTWARE

#### For ROW

- Lenovo Vantage
- McAfee LiveSafe™
- Microsoft Office Trial<sup>2</sup>
- Microsoft LinkedIn
- PowerDVD/Power2Go

#### For PRC

- Lenovo PC Manager
- Lenovo Antivirus
- Microsoft Office 2016 Home and Student
- Microsoft LinkedIn



<sup>1</sup> Display output defined by graphics card selection. Rear port selection may vary.

<sup>2</sup> Except Japan, India and China.

## LENOVO SERVICES

#### Warranty Extensions<sup>1</sup>

This fixed-term, fixed-cost service helps accurately budget for PC expenses and protect your investment.

#### Warranty Upgrade to Onsite Service<sup>1,2</sup>

Maximizes PC uptime and productivity by providing convenient, fast repair service at your place.

#### Premium Support<sup>3</sup>

One-stop solution for non-warranty challenges with network, security and software setup, performance tune-up and more.

<sup>1</sup> Up to 3 years total duration

<sup>2</sup> May not be available in all countries

<sup>3</sup> Available in Austria, Germany, Ireland, Switzerland and UK

## OPTIONS & ACCESSORIES



Lenovo Y Gaming Optical Mouse



Lenovo Y Gaming Mechanical Switch Keyboard



Lenovo Y Gaming Stereo Headset

\* Example of Lenovo Legion catalogue naming convention



#### Intel® platform codes

Haswell H81: IHH, BroadWell U: IBU, Skylake Z170: ISZ, Skylake B150: ISB, Kabylake: IKL, Skylake H110/H170: ISH, Skylake U: ISU, Apollo Lake: IAP, Coffee Lake B360: ICB, Coffee Lake H: ICH, Coffee Lake Z370 Overclock: ICO



WWW.LENOVO.COM

Lenovo reserves the right to alter product offerings and specifications at any time, without notice. Lenovo makes every effort to ensure accuracy of all information but is not liable or responsible for any editorial, photographic or typographic errors. All images are for illustration purposes only. For full Lenovo product, service and warranty specifications visit [www.lenovo.com](http://www.lenovo.com). Lenovo makes no representations or warranties regarding third party products or services. **Trademarks:** The following are trademarks or registered trademarks of Lenovo: Lenovo, the Lenovo logo, ideapad, IdeaCentre, yoga and yoga home. Microsoft, Windows and Vista are registered trademarks of Microsoft Corporation. Ultrabook, Celeron, Celeron Inside, Core Inside, Intel, Intel Logo, Intel Atom, Intel Atom Inside, Intel Core, Intel Inside, Intel Inside Logo, Intel vPro, Itanium, Itanium Inside, Pentium, Pentium Inside, vPro Inside, Xeon, Xeon Phi, and Xeon Inside are trademarks of Intel Corporation in the U.S. and/or other countries. Other company, product and service names may be trademarks or service marks of others. Visit [www.lenovo.com/lenovo/us/en/safecomp/](http://www.lenovo.com/lenovo/us/en/safecomp/) periodically for the latest information on safe and effective computing. ©2018 Lenovo. All rights reserved.



Lenovo™