

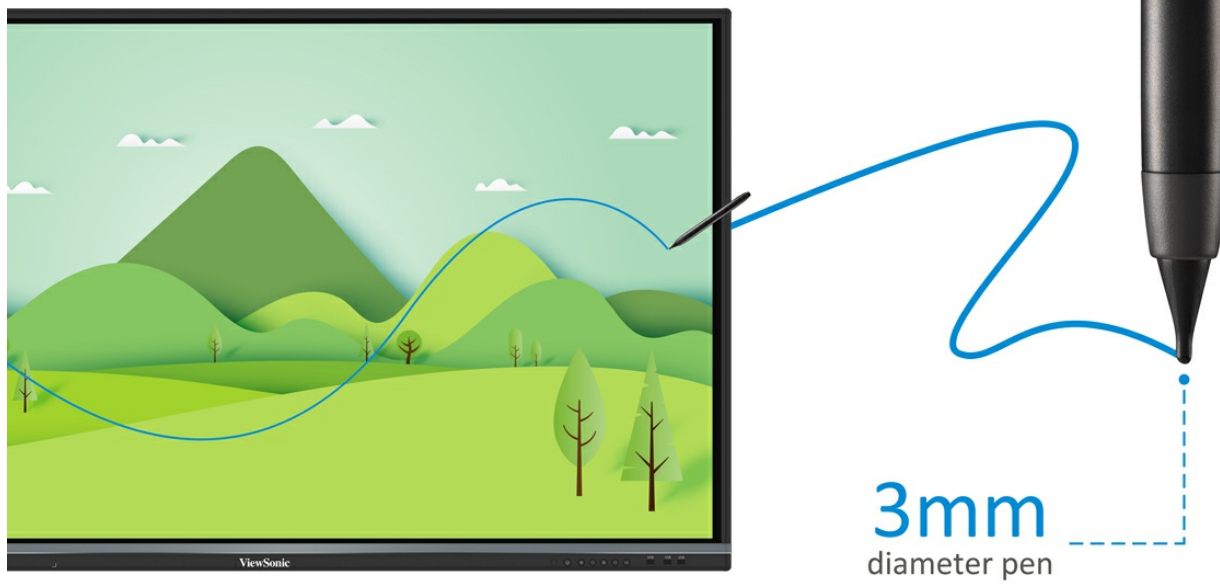


- UFT (Ultra Fine Touch) Technology
- myViewBoard™ digital whiteboard software
- ViewBoard® Cast 4-way split screen content sharing software
- SmartPort™ shared front USB ports for internal & external PCs
- 2.1 Stereo sound with built-in subwoofer

The ViewBoard® IFP50-2 series embraces UFT (Ultra Fine Touch) Technology to offer more precise writing and faster processing time than traditional IR panels. Smooth, dual-pen writing with our new, slim 3mm pens enables groups of teachers and students to work efficiently on any detailed tasks that require the use of accurate, fine-tipped pens. The ViewBoard® IFP50-2 series is designed with a slim bezel to broaden your viewing experience so that even at the edge of the panel you can write clearly and confidently. Integrated myViewBoard™ digital whiteboard software allows users to collaborate on the go, while ViewBoard® Cast provides 4-way, split-screen content sharing.

UFT Technology

Ultra Fine Touch Technology produces a lag-free, pen-on-paper writing experience. Writing accuracy is greatly improved and student-teacher interaction flows more naturally thanks to real-time response rates, dual-pen recognition and our new 3mm tipped pens.



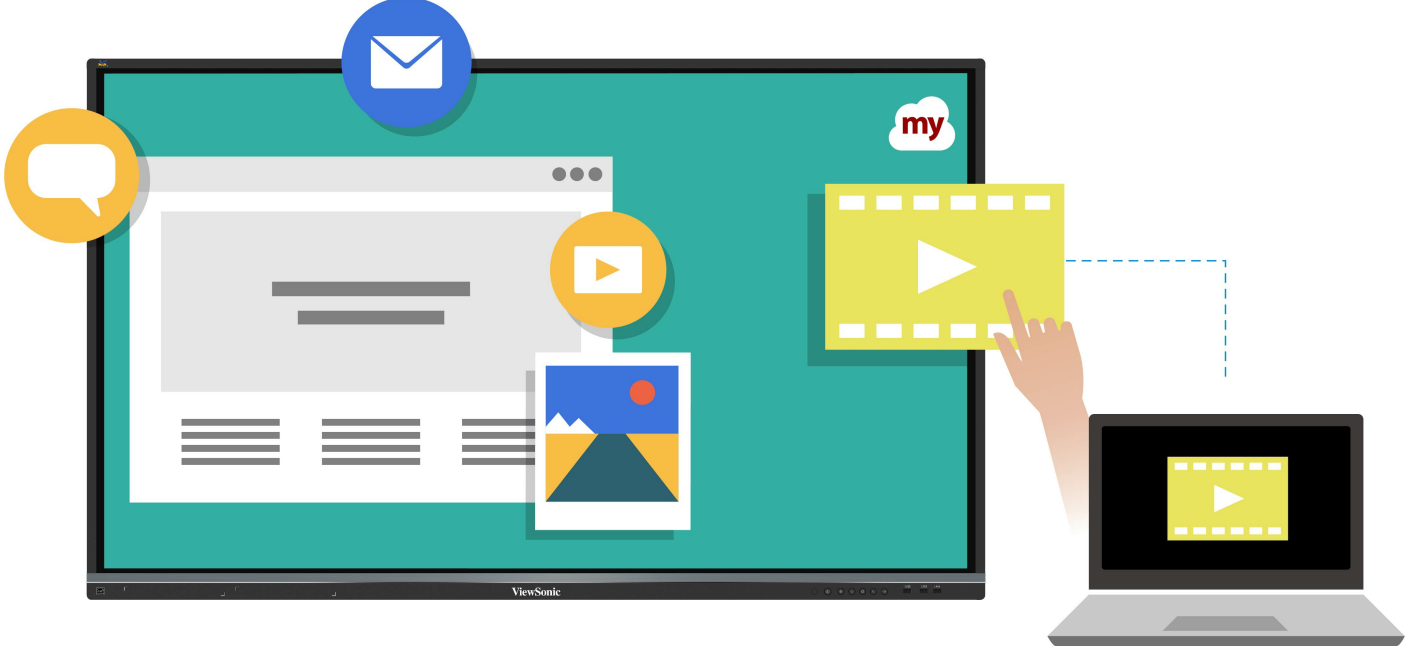
Dual-Pen

Automatically detect pen diameter (8mm & 3mm) and write simultaneously with different colours and thicknesses.



Full Native Performance on Android

Built-in myViewBoard™ digital whiteboard software to collaborate on the go.



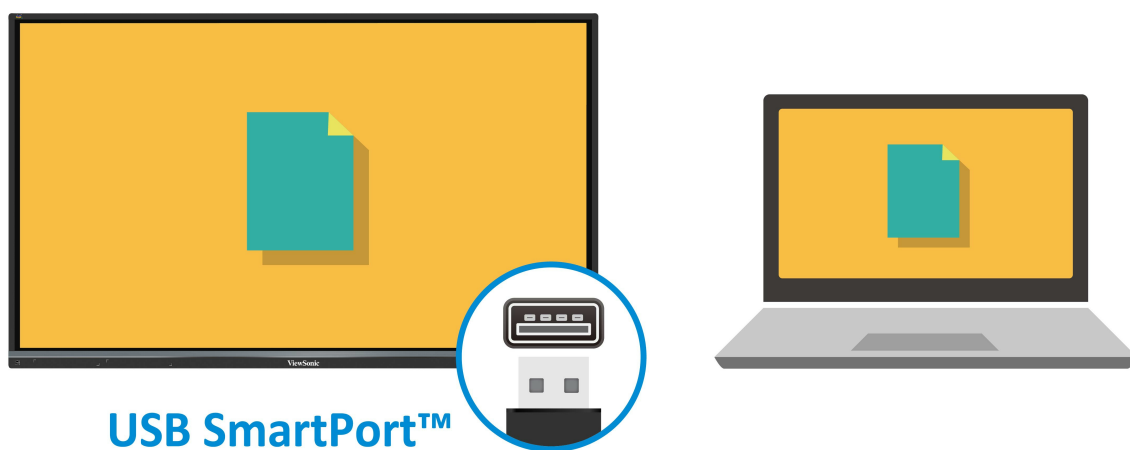
4-way Split Screen

4-way split screen content sharing with built-in ViewBoard® Cast software.



Shared USB Ports

SmartPort™ shared front USB ports for internal & external PCs.



Stereo Sound

2.1 Stereo sound with a built-in subwoofer.



Faster Internet

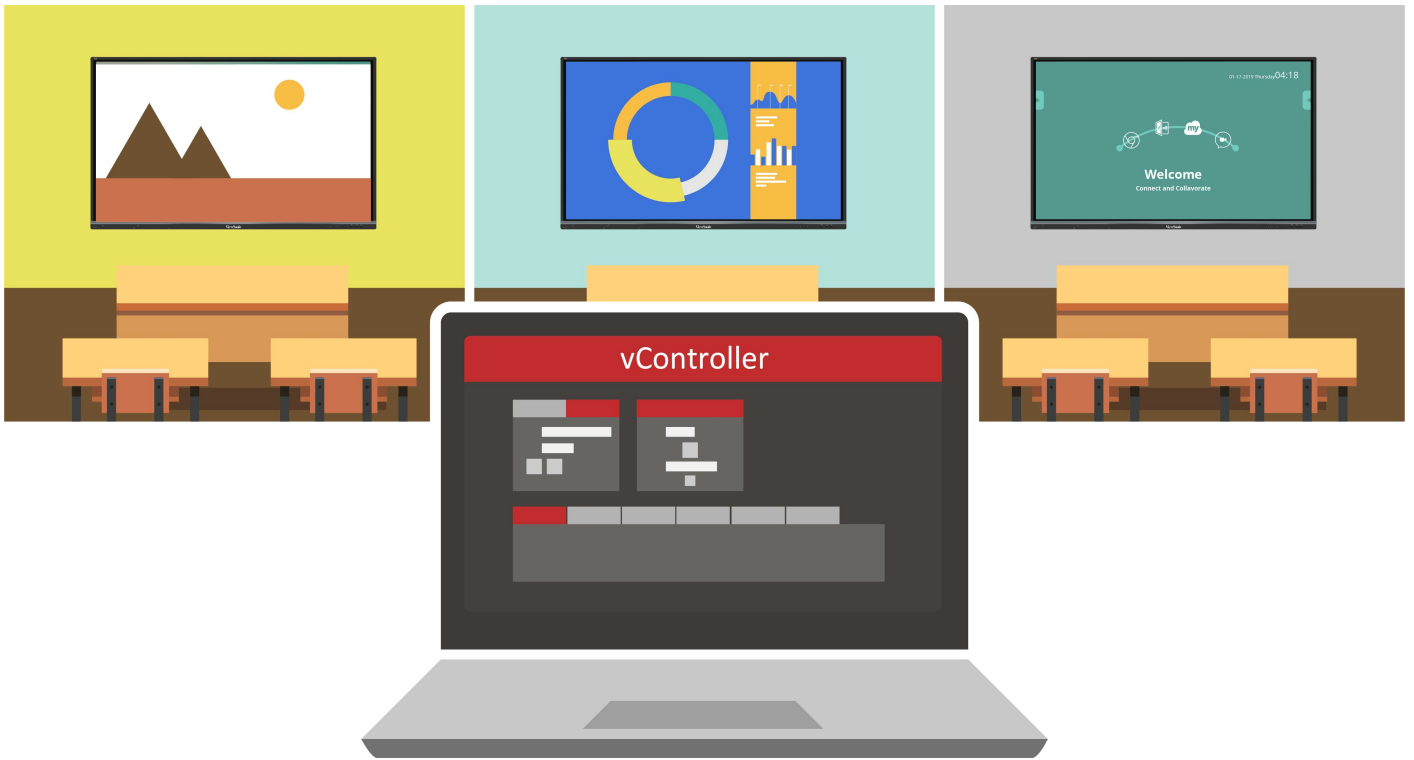
GigaLAN provides a faster, more powerful internet connection.

GigaLAN



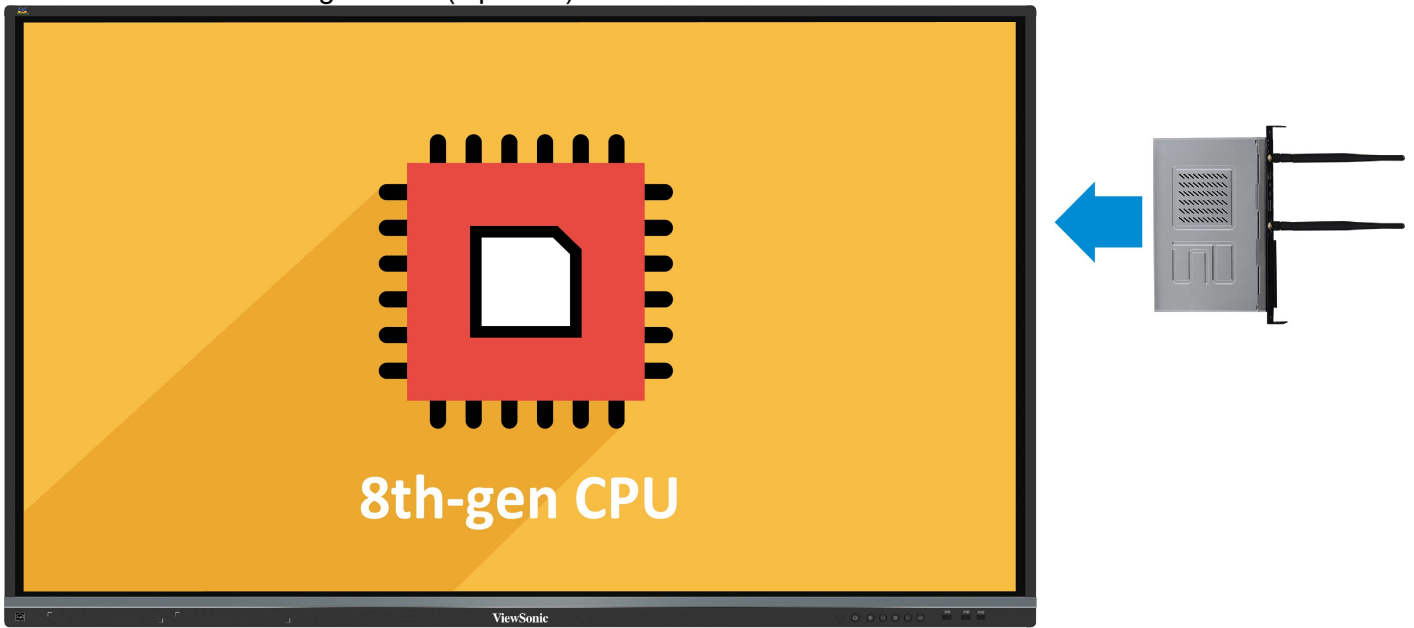
Remote Control

Built-in RS232 port and vController software for remote control.



Slot-in PC

Slot-in PC with Intel 8th-gen CPU (Optional).

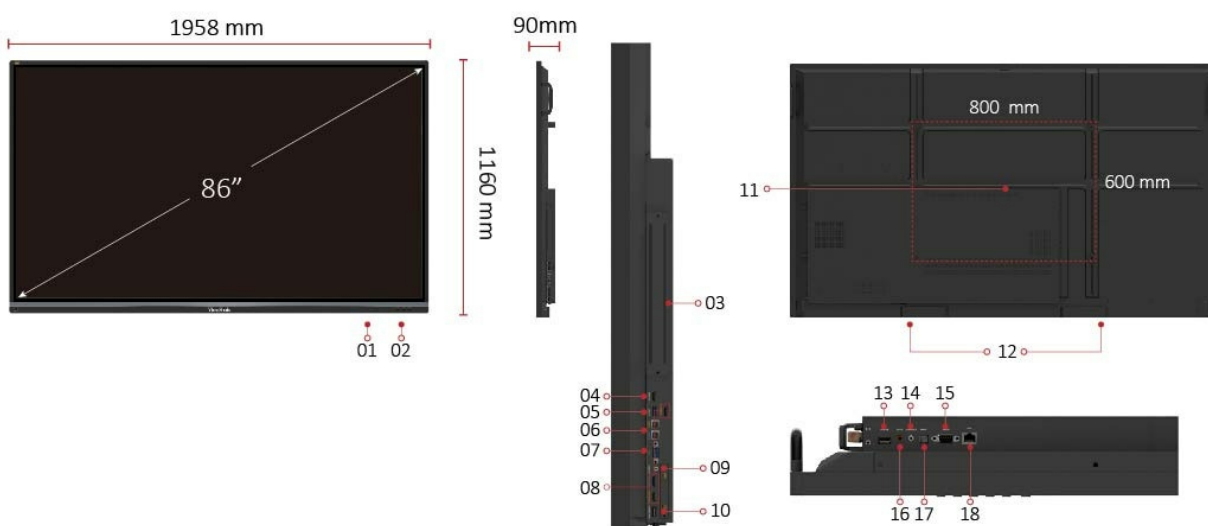


Web Camera

Top-mounted 1080p web camera (Optional).



I/O Ports



1. MENU CONTROLS
2. USB X 3
3. Intel Unite® Certified OPS Slot
4. HDMI OUT
5. USB 3.0
6. TOUCH X 2
7. VGA
8. HDMI IN X 2
9. AUDIO IN
10. CAMERA PORT
11. VESA® WALL Mount 800x600 mm

- 12. INTERNAL SPEAKERS
- 13. USB 2.0
- 14. AUDIO OUT
- 15. RS232
- 16. AV IN
- 17. SPDIF
- 18. LAN

Technical Specifications

| | | |
|--|--|--|
| Display | Panel Size | 86" |
| | Type/Tech | TFT LCD Module with DLED Backlight. |
| | Display Area (mm) | 1895.04 (H) x 1065.96 (V) (85.6"diagonal) |
| | Aspect Ratio | 16:9 |
| | Native Resolution | UHD 3840x2160(Pixels) |
| | Colours | 1.07B colours (10bit) |
| | Brightness | 350 nits (typ.) 300 nits (min.) |
| | Contrast Ratio | 1200:1 Typ. |
| | Response Time | 8ms |
| | Viewing Angles | H = 178, V = 178 typ. |
| | Backlight Life | 30,000 Hours (Min) |
| | Surface Treatment | Anti-Glare |
| | Bezel | Slim |
| | Orientation | Landscape |
| Platform | Processor | ARM Cortex A73 dual-core 1.2GHz |
| | RAM | 2GB DDR4 |
| | Storage | 16GB |
| Touch | Type/ Tech | IR Recognition |
| | Touch Resolution | 32767 x 32767 |
| | Touch Point | 20 points touch, 10 points writing |
| INPUT | HDMI | 2.0 x3 (3840x2160 @60Hz) |
| | RGB / VGA | x1 |
| | Audio | x1 (PC audio in) |
| | CVBS | x1 |
| | RS232 | x1 |
| | OPS | x1 PC Slot (proprietary) |
| OUTPUT | HDMI | x1 |
| | Audio | x1 (Earphone out) |
| | SPDIF | 1(optical) |
| | RS232 | x1 |
| LAN | RJ45 | x1 |
| USB | Type A | USB 2.0 x4(including 2 USB port in fromt) USB 3.0 x2(including 1 USB port in fromt) |
| | Type B | x2, for touch |
| SPEAKERS | SPEAKERS | 10W x 2 + 15W x 1 |
| Camera plate on top for screw-in webcam installation | Camera plate on top for screw-in webcam installation | Yes |

| | | |
|----------------------------------|--|--|
| COMPATIBILITY | RGB PC/HDMI PC | Refer to timing table |
| | CVBS | 480i |
| | HDMI | 3840x2160 |
| Embedded OS | Embedded OS | Android 7 |
| USB SUPPORTED FILE FORMAT | USB SUPPORTED FILE FORMAT | Picture - BMP, JPEG, PNG |
| | | Video - Codec: MPEG1, MPEG2, MPEG2-PS, MPEG4, MKV Container: MPG, MP4, MOV, VOB, DAT, MKV |
| | | Audio - Codec: AAC, HEAAC, MPEG1, MPEG2 Container: AAC, M4A, MP3 |
| Bundle Software | Basic Annotation Software | myViewBoard |
| | Pro Annotation Software | myViewBoard for windows (Embedded in Windos Slot-in PC) |
| | Wireless Presentation with Touch Feedback: Viewboard Cast | yes |
| | Zoom | Yes |
| | ViewSonic Launcher | Embedded |
| Special Features | All-in-one USB port (combine Windows/Android USB port; no need to distinguish them anymore) | Front "SmartPort USB" to all channels. |
| | Simple LAN sharing between IFP and slot-in device | yes |
| Power | Voltage | 100-240VAC +/- 10% Wide Range |
| | Consumption | 155W (Typ.) < 0.5 W ("Off") |
| ERGONOMICS | Wall Mount (VESA®) | 800 x 600 |
| OPERATING CONDITIONS | Temperature (° C) | 0°C to 40°C |
| | Humidity | 10% ~ 90% RH non-condensing |
| DIMENSIONS (W x H x D) | Physical (inch / mm) | 77.1 x 45.7 x 3.5 in / 1958 x 1160 x 90 mm |
| | Packaging (inch / mm) | 83.6 x 53.0 x 11.0 in / 2123 x 1345 x 280 mm |
| WEIGHT | Net (lb / kg) | 153.66 lb / 69.7 Kg |
| | Gross (lb / kg) | 202.83 lb / 92 Kg |
| REGULATIONS | REGULATIONS | FCC, cTUVus, CB, CE, BSMI, RCM, BIS, CCC, EAC |
| Energy Star version | Energy Star version | ES7.1 |
| EEL rating | EEL rating | A+ |
| PACKAGE CONTENTS | PACKAGE CONTENTS | 1. Power cable(3 meters) x 4 2. Remote control 3. USB cable(5 meters) 4. AV cable 5. Touching pen x 2 6. Quick Start Guide 7. RS232 adapter 8. Clamp x 5 9. Plate 10. Screw x 8 11. HDMI cable |
| Compatible Slot-in PC | Compatible Slot-in PC | VPC14-WP series VPC10-WP series |

VPC15-WP series
VPC16-WP series
VPC17-WP series