

# ideapad 330

## STREAMLINE YOUR DAY

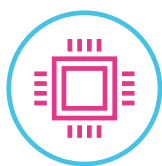
Sometimes it's best to keep things simple. Stacked with premium processing and advanced graphics options, the Lenovo™ IdeaPad™ 330 is as powerful as it is easy to use. Available in a range of sophisticated colors, it's safe, durable, and ready for today's tasks – and tomorrow's.

### WHY YOU SHOULD BUY THE LENOVO IDEAPAD 330



#### Designed to keep up with you

A laptop isn't just a piece of electronics – it's also an investment. That's why we designed the IdeaPad 330 with a special protective finish to guard against wear and tear, as well as rubber detailing on the bottom to maximize ventilation and extend component life.



#### Amp up your productivity

Choose from a range of specs that will meet your evolving needs. With the latest generation of Intel® processing and advanced NVIDIA® discrete graphics options<sup>1</sup>, you'll enjoy seamless multitasking, immersive gaming, faster bootups, and more.



Lenovo™



#### High-performance storage

Choose from up to 2 TB SATA HDD to store thousands of videos, photos and files; or choose responsive SSD, SATA or PCIe<sup>1</sup> – for shorter boot up times and faster data transfer speeds; or opt for hybrid storage<sup>1</sup> that gives you the best of both worlds.



#### Life-like clarity

Featuring up to FHD resolution on a 14", 15.6" or 17.3" display combined with the warm sound of Dolby Audio™, the IdeaPad 330 delivers a powerful entertainment experience on-the-go. (Also available with HD touchscreen.)



<sup>1</sup> Availability varies by configuration.



[WWW.LENOVO.COM](http://WWW.LENOVO.COM)



# ideapad 330

## SPECIFICATIONS

Lenovo IdeaPad 330-14IKB\*, Lenovo IdeaPad 330-14IKBR\*, Lenovo IdeaPad 330-14IGM\*

### PERFORMANCE

#### Processor

8<sup>th</sup> Generation Intel® Core™ i7 Processor  
7<sup>th</sup> Generation Intel® Core™ i7 Processor  
Intel® Pentium® Processor  
Intel® Celeron® Processor

#### Operating System

Windows 10 Home

#### Graphics

**330-14IKB**  
Intel® Integrated  
NVIDIA® GeForce® MX110  
NVIDIA® GeForce® MX130  
AMD Radeon™ 530

#### 330-14IKBR

Intel® Integrated  
AMD Radeon™ 530

#### 330-14IGM

Intel® Integrated

#### Camera / Microphone

0.3M with Single Microphone;  
HD with Single Microphone

#### Audio

2 x 1.5W Speakers with Dolby Audio™

#### Memory

##### 330-14IKB

4 GB DDR4;  
4 GB DDR4 + 2 GB DIMM;  
4 GB DDR4 + 4 GB DIMM;  
4 GB DDR4 + 8 GB DIMM;  
16 GB DIMM;  
16 GB Intel® Optane™

##### 330-14IKBR

4 GB DDR4;  
4 GB DDR4 + 4 GB DIMM;  
4 GB DDR4 + 8 GB DIMM

##### 330-14IGM

4 GB DDR4;  
8 GB DDR4

#### Storage

##### 330-14IKB

SATA SSD : 256 GB / 128 GB  
SATA HDD : 2 TB / 1 TB / 500 GB  
SATA SSD + SATA HDD : 256 GB + 1 TB /  
128 GB + 1 TB

##### 330-14IKBR

SATA SSD : 128 GB  
SATA HDD : 2 TB / 1 TB / 500 GB  
SATA SSD + SATA HDD : 128 GB + 1 TB

##### 330-14IGM

SATA SSD : 256 GB / 128 GB  
SATA HDD : 2 TB / 1 TB / 500 GB

#### Battery<sup>2</sup>

Up to 6 Hours

### DESIGN

#### Display

14" FHD (1920 x 1080) Anti-Glare  
14" HD (1366 x 768) Anti-Glare

#### Dimensions (W x D x H)

(mm) : 338.3 x 249.9 x 22.7  
(inches): 13.32" x 9.84" x 0.89"

#### Weight

Starting at 4.6 lbs (2.1 kg)

#### Additional Features

Cortana  
DVD Drive<sup>1</sup>

#### Color Options

Platinum Grey  
Mint Green  
Midnight Blue



### CONNECTIVITY

#### WLAN

1 x 1 WiFi 802.11 ac<sup>3</sup>

#### Bluetooth®

Bluetooth® 4.1

#### Connectors

##### 330-14IKB, 330-14IKBR

1 x USB 3.0 Type-C™  
2 x USB 3.0  
4-in-1 Card Reader (SD, SDHC, SDXC, MMC)  
HDMI™  
RJ45 LAN  
Audio Jack

##### 330-14IGM

1 x USB 3.0  
1 x USB 2.0  
HDMI™  
RJ45 LAN  
4-in-1 Card Reader (SD, SDHC, SDXC, MMC)  
Audio Jack

### PRELOADED SOFTWARE

- Lenovo App Explorer
- Lenovo Vantage
- Lenovo ID
- Lenovo Settings
- McAfee LiveSafe™ (30-day trial)
- Microsoft Office 365 (30-day trial)

<sup>1</sup> Optional.

<sup>2</sup> All battery life claims are approximate and based on test results using the MobileMark® 2014 ver 1.5 battery life benchmark test. Actual results will vary, and depend on numerous factors including product configuration and usage, software, operating conditions, wireless functionality, power management settings, screen brightness and other factors. The maximum capacity of the battery will naturally decrease with time and usage. See <https://bapccom.products/mobilemark-2014/> for additional details.

<sup>3</sup> Disable ac for Russia, Ukraine, Indonesia and Egypt.



Lenovo™

# ideapad 330

## SPECIFICATIONS

Lenovo IdeaPad 330-15IKB\*, Lenovo IdeaPad 330-15IKB-Touch\*, Lenovo IdeaPad 330-15IGM\*,  
Lenovo IdeaPad 330-15ICH\*, Lenovo IdeaPad 330-15ICN\*

## PERFORMANCE

### Processor

8<sup>th</sup> Generation Intel® Core™ i7 Processor  
7<sup>th</sup> Generation Intel® Core™ i7 Processor  
Intel® Pentium® Processor  
Intel® Celeron® Processor

### Operating System

Windows 10 Home

### Graphics

#### 330-15IKB

Intel® Integrated  
NVIDIA® GeForce® MX110<sup>1</sup>  
NVIDIA® GeForce® MX130<sup>1</sup>  
NVIDIA® GeForce® MX150<sup>2</sup>  
AMD Radeon™ 530<sup>2</sup>

#### 330-15IKB-Touch

NVIDIA® GeForce® MX130<sup>1</sup>  
NVIDIA® GeForce® MX150<sup>2</sup>

#### 330-15IGM

Intel® Integrated  
AMD Radeon™ 530

#### 330-15ICH

NVIDIA® GeForce® GTX 1050

#### 330-15ICN

AMD Radeon™ 540

### Camera / Microphone

0.3M with Single Microphone;  
HD with Single Microphone

### Audio

2 x 1.5W Speakers with Dolby Audio™

### Memory

#### 330-15IKB, 330-15IKB-Touch

4 GB DDR4;  
4 GB DDR4 + 2 GB DIMM;  
4 GB DDR4 + 4 GB DIMM;  
4 GB DDR4 + 8 GB DIMM;  
16 GB DIMM<sup>3</sup>;  
16 GB Intel® Optane™<sup>4</sup>

#### 330-15IGM

4 GB DDR4;  
8 GB DDR4

#### 330-15ICH

4 GB DDR4;  
4 GB DDR4 + 4 GB DIMM;  
4 GB DDR4 + 8 GB DIMM;  
16 GB DIMM

#### 330-15ICN

4 GB DDR4;  
4 GB DDR4 + 4 GB DIMM;  
4 GB DDR4 + 8 GB DIMM

### Storage

#### 330-15IKB, 330-15IKB-Touch

PCIe SSD : 128 GB  
SATA SSD : 256 GB / 128 GB  
SATA HDD : 2 TB / 1 TB / 500 GB  
SATA SSD + SATA HDD : 256 GB + 1 TB /  
128 GB + 1 TB  
PCIe SSD + SATA HDD : 128 GB + 1 TB  
16 GB Intel® Optane™ + 1 TB SATA HDD

#### 330-15IGM, 330-15ICN

SATA SSD : 256 GB / 128 GB  
SATA HDD : 2 TB / 1 TB / 500 GB

#### 330-15ICH

PCIe SSD : 256 GB / 128 GB  
SATA HDD : 2 TB / 1 TB / 500 GB  
PCIe SSD + SATA HDD : 256 GB + 1 TB /  
128 GB + 1 TB

### Battery<sup>5</sup>

#### 330-15IKB, 330-15IKB-Touch, 330-15IGM

Up to 6 Hours

#### 330-15ICH

Up to 8 Hours

#### 330-15ICN

Up to 4.5 Hours

## DESIGN

### Display

#### 330-15IKB, 330-15IGM, 330-15ICH, 330-15ICN

15.6" FHD (1920 x 1080) Anti-Glare

15.6" HD (1366 x 768) Anti-Glare

#### 330-15IKB-Touch

15.6" FHD (1920 x 1080) Touchscreen; Anti-Glare

15.6" HD (1366 x 768) Touchscreen; Anti-Glare

### Dimensions (W x D x H)

(mm) : 378 x 260 x 22.9

(inches): 14.88" x 10.24" x 0.9"

### Weight

Starting at 4.8 lbs (2.2 kg)

### Additional Features

Backlit Keyboard<sup>6</sup>

Cortana

DVD Drive<sup>7</sup>

### Color Options

Blizzard White

Platinum Grey

Onyx Black

Midnight Blue

Chocolate

## CONNECTIVITY

### WLAN

1 x 1 WiFi 802.11 ac<sup>8</sup>  
2 x 2 WiFi 802.11 ac<sup>9</sup>

### Bluetooth®

Bluetooth® 4.1

### Connectors

#### 330-15IKB, 330-15IKB-Touch, 330-15ICH, 330-15ICN

1 x USB 3.0 Type-C™

2 x USB 3.0

4-in-1 Card Reader (SD, SDHC, SDXC, MMC)

HDMI™

RJ45 LAN

Audio Jack

#### 330-15IGM

1 x USB 3.0

1 x USB 2.0

HDMI™

RJ45 LAN

4-in-1 Card Reader (SD, SDHC, SDXC, MMC)

Audio Jack

## PRELOADED SOFTWARE

- Lenovo App Explorer
- Lenovo Vantage
- Lenovo ID
- Lenovo Settings
- McAfee LiveSafe™ (30-day trial)
- Microsoft Office 365 (30-day trial)

<sup>1</sup> Available on 7<sup>th</sup> generation models.

<sup>2</sup> Available on 8<sup>th</sup> generation models.

<sup>3</sup> Available only with i7 configurations.

<sup>4</sup> Optional.

<sup>5</sup> All battery life claims are approximate and based on test results using the MobileMark® 2014 ver 1.5 battery life benchmark test. Actual results will vary, and depend on numerous factors including product configuration and usage, software, operating conditions, wireless functionality, power management settings, screen brightness and other factors. The maximum capacity of the battery will naturally decrease with time and usage. See <https://bapcocom/products/mobilemark-2014/> for additional details.

<sup>6</sup> Optional and only on ICH models.

<sup>7</sup> Optional and only on ICN models.

<sup>8</sup> Disable ac for Russia, Ukraine, Indonesia and Egypt.

<sup>9</sup> Only on ICH configurations.



# ideapad 330

## SPECIFICATIONS

Lenovo IdeaPad 330-17IKB\*, Lenovo IdeaPad 330-17ICH\*

### PERFORMANCE

#### Processor

8<sup>th</sup> Generation Intel® Core™ i7 Processor  
7<sup>th</sup> Generation Intel® Core™ i7 Processor

#### Operating System

Windows 10 Home

#### Graphics

##### 330-17IKB

Intel® Integrated  
NVIDIA® GeForce® MX110  
NVIDIA® GeForce® MX130  
NVIDIA® GeForce® MX150

##### 330-17ICH

NVIDIA® GeForce® MX110  
NVIDIA® GeForce® MX130  
NVIDIA® GeForce® MX150  
NVIDIA® GeForce® GTX 1050

#### Camera / Microphone

0.3M with Single Microphone;  
HD with Single Microphone

#### Audio

2 x 1.5W Speakers with Dolby Audio™

#### Memory

##### 330-17IKB

4 GB DDR4;  
4 GB DDR4 + 2 GB DIMM;  
4 GB DDR4 + 4 GB DIMM;  
4 GB DDR4 + 8 GB DIMM;  
16 GB DIMM;  
16 GB Intel® Optane™<sup>1</sup>

##### 330-17ICH

4 GB DDR4;  
4 GB DDR4 + 4 GB DIMM;  
4 GB DDR4 + 8 GB DIMM;  
16 GB DIMM

#### Storage

##### 330-17IKB

PCIe SSD : 128 GB  
SATA SSD : 256 GB / 128 GB  
SATA HDD : 2 TB / 1 TB / 500 GB  
SATA SSD + SATA HDD : 256 GB + 1 TB /  
128 GB + 1 TB + ODD  
PCIe SSD + SATA HDD : 128 GB + 1 TB  
16 GB Intel® Optane™ + 1 TB SATA HDD

##### 330-17ICH

PCIe SSD : 256 GB / 128 GB  
SATA HDD : 2 TB / 1 TB / 500 GB  
PCIe SSD + SATA HDD : 256 GB + 1 TB /  
128 GB + 1 TB  
16 GB Intel® Optane™ + 1 TB SATA HDD

#### Battery<sup>2</sup>

##### 330-17IKB

Up to 6 Hours

##### 330-17ICH

Up to 8 Hours

### DESIGN

#### Display

17.3" FHD (1920 x 1080) IPS Anti-Glare  
17.3" HD+ (1600 x 900) Anti-Glare

#### Dimensions (W x D x H)

(mm) : 418 x 292.6 x 24.9  
(inches): 16.46" x 11.52" x 0.98"

#### Weight

Starting at 6.2 lbs (2.8 kg)

#### Additional Features

Backlit Keyboard<sup>3</sup>

#### Color Options

Platinum Grey  
Onyx Black

### CONNECTIVITY

#### WLAN

1 x 1 WiFi 802.11 ac<sup>4</sup>  
2 x 2 WiFi 802.11 ac<sup>3</sup>

#### Bluetooth®

Bluetooth® 4.1

#### Connectors

1 x USB 3.0 Type-C™  
2 x USB 3.0  
4-in-1 Card Reader (SD, SDHC, SDXC, MMC)  
HDMI™  
RJ45 LAN  
Audio Jack

### PRELOADED SOFTWARE

- Lenovo App Explorer
- Lenovo Vantage
- Lenovo ID
- Lenovo Settings
- McAfee LiveSafe™ (30-day trial)
- Microsoft Office 365 (30-day trial)

### LENOVO SERVICES

#### Warranty Extensions<sup>1</sup>

This fixed-term, fixed-cost service helps accurately budget for PC expenses and protect your investment.

#### Warranty Upgrade to Onsite Service<sup>2</sup>

Maximizes PC uptime and productivity by providing convenient, fast repair service at your place.

<sup>1</sup> Up to 3 years total duration

<sup>2</sup> May not be available in all countries

<sup>3</sup> Available in Austria, Germany, Ireland, Switzerland and UK

#### Accidental Damage Protection<sup>1,2</sup>

Coverage for non-warranted damage incurred under normal operating conditions, such as spills, drops or damage to the integrated screen.

#### Premium Support<sup>3</sup>

One-stop solution for non-warranty challenges with network, security and software setup, performance tune-up and more.

### OPTIONS & ACCESSORIES



Lenovo 500  
Wireless Compact  
Precision Mouse



F310S USB 3.0  
External Backup  
Hard Drive



Lenovo 15.6" Laptop  
Casual Backpack  
B210

\* Example of Lenovo IdeaPad catalogue naming convention



#### Intel® platform codes

Apollo Lake: IAP, Broadwell: IBD, Braswell: IBR, Broadwell: IBW, Baytrail: IBY, Cannonlake: ICN, Haswell: IHH, Kabylake: IKB, Skylake H: ISH, Skylake: ISK, Skylake U: ISU, Skylake Y: ISY, Skylake Z: ISZ



WWW.LENOVO.COM

Lenovo reserves the right to alter product offerings and specifications at any time, without notice. Lenovo makes every effort to ensure accuracy of all information but is not liable or responsible for any editorial, photographic or typographic errors. All images are for illustration purposes only. For full Lenovo product, service and warranty specifications visit [www.lenovo.com](http://www.lenovo.com). Lenovo makes no representations or warranties regarding third party products or services. **Trademarks:** The following are trademarks or registered trademarks of Lenovo: Lenovo, the Lenovo logo, ideapad, IdeaCentre, yoga and yoga home. Microsoft, Windows and Vista are registered trademarks of Microsoft Corporation. Ultrabook, Celeron, Celeron Inside, Core Inside, Intel Logo, Intel Atom, Intel Atom Inside, Intel Core, Intel Inside, Intel Inside Logo, Intel vPro, Itanium, Itanium Inside, Pentium, Pentium Inside, vPro Inside, Xeon, Xeon Phi, and Xeon Inside are trademarks of Intel Corporation in the U.S. and/or other countries. Other company, product and service names may be trademarks or service marks of others. Visit [www.lenovo.com/lenovo/us/en/safecom/](http://www.lenovo.com/lenovo/us/en/safecom/) periodically for the latest information on safe and effective computing. ©2018 Lenovo. All rights reserved.



Lenovo™