



Philips
LCD monitor with USB-C
Dock

B Line

24 (23.8"/60.5 cm diag.)
1920 x 1080 (Full HD)



241B7QUBHEB

Simplify your connections with USB docking

This Philips monitor offers a simple, one-cable laptop docking solution. One USB dual-mesh cable with Type C and A connectors delivers video, Ethernet, power charge and DisplayLink functions. Windows Hello webcam offers greater security.

Single cable for USB docking

- Built-in USB docking simplifies your connections
- One USB dual-mesh cable further reduces cable clutter
- USB-C enables laptop power charging directly from a monitor
- USB-A with DisplayLink enables compatibility with existing laptops
- USB 3.2 high-speed data transfer
- Built-in RJ-45 Ethernet gives data security

Brilliant performance

- IPS technology for full colours and wide viewing angles
- LowBlue Mode for easy-on-the-eyes productivity
- Securely sign in with pop-up webcam with Windows Hello™
- DisplayPort-out for connecting additional displays

Sustainable Eco-design

- PowerSensor saves up to 80% energy costs
- 100% recyclable packaging

PHILIPS

Highlights

USB Docking

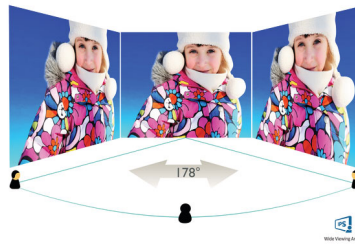
Philips USB-docking monitors deliver universal port replication for simple, clutter-free notebook connection. Securely connect to networks and transmit data, video and audio from a laptop using just a single USB cable. What's more, you can dock with a USB Type-C port for additional power charging. With docking monitors with built-in DisplayLink Technology, users can benefit from forwards and backwards USB compatibility with virtually any recent notebook. USB docking can boost business productivity and reduce costs.

USB Type-C connection



This Philips display features a built-in USB type-C docking station with power delivery. With intelligent and flexible power management, you can power charge your compatible* laptop directly. Its slim, reversible USB-C connector allows for easy, one-cable docking. Simplify by connecting all your peripherals like keyboard, mouse and your RJ-45 Ethernet cable to the monitor's docking station. You can watch high-resolution video and transfer data at super-speed, while powering up and re-charging your notebook at the same time.

IPS technology



IPS displays use advanced technology that gives you extra-wide viewing angles of 178/178 degrees, making it possible to view the display from almost any angle — even in 90-degree Pivot mode! Unlike standard TN panels, IPS displays gives you remarkably crisp images with vivid colours, making it ideal not only for Photos, films and web browsing, but also for professional applications that demand colour accuracy and consistent brightness at all times.

LowBlue Mode



Studies have shown that just as ultra-violet rays can cause eye damage, shortwave-length blue light rays from LED displays can cause eye damage and affect vision over time. Developed for wellbeing, the Philips LowBlue Mode setting uses a smart software technology to reduce harmful shortwave blue light.

Windows Hello™ pop-up webcam

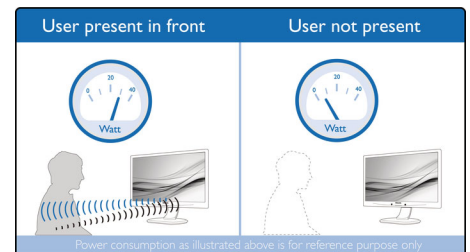


Philips' innovative and secure webcam pops up when you need it and securely tucks back into the monitor when you are not using it. The webcam is also equipped with advanced sensors for Windows Hello™ facial recognition, which conveniently logs you into your Windows devices in less than 2 seconds, 3 times faster than a password.

DisplayPort-out

With DisplayPort-out you can connect multiple high-resolution displays with just one cable from your first display to the PC. The ability to daisy chain multiple displays enables you to maintain a clean desktop without the hassle of too many wires.

PowerSensor



PowerSensor is a built-in 'people sensor' that transmits and receives harmless infrared signals to determine if the user is present and then automatically reduces monitor brightness when the user steps away from the desk, cutting energy costs by up to 80 percent and prolonging monitor life



USB Docking



USB-C



IPS
Wide Viewing
Angle



Windows Hello



PowerSensor



3-sided
Frameless



HDMI™
HIGH DEFINITION MULTIMEDIA INTERFACE



Flicker-free

Specifications

Picture/Display

- LCD panel type: IPS technology
- Backlight type: W-LED system
- Panel Size: 23.8 inch/60.5 cm
- Display Screen Coating: Anti-Glare, 3H, Haze 25%
- Effective viewing area: 527 (H) x 296.5 (V)
- Aspect ratio: 16:9
- Maximum resolution: 1920 x 1080 @ 75 Hz*
- Pixel Density: 93 PPI
- Response time (typical): 5 ms (Grey to Grey)*
- Brightness: 250 cd/m²
- Contrast ratio (typical): 1000:1
- SmartContrast: 50,000,000:1
- Pixel pitch: 0.275 x 0.275 mm
- Viewing angle: 178° (H)/178° (V), @ C/R > 10
- Flicker-free
- Picture enhancement: SmartImage
- Display colours: 16.7 M
- Colour gamut (typical): NTSC 85%*, sRGB 102%*
- Scanning Frequency: 30–85 kHz (H) / 48–75 Hz (V)
- sRGB
- LowBlue Mode
- EasyRead

Connectivity

- Signal Input: DisplayPort 1.2 x 1, HDMI 1.4 x 1, USB-C 3.2 Gen 2 x 1 (DP Alt mode, power delivery up to 65 W)
- Signal Output: DisplayPort out (DP, USB-C)*
- USB: USB-C 3.2 x 1 Gen 2 (upstream), USB 3.2 x 4 (downstream, w/ 1 fast charging)
- RJ45: Ethernet LAN up to 1G*
- Sync Input: Separate Sync, Sync on Green
- Audio (In/Out): Audio out
- DC power out: x 1 (support 19 V, max 65 W)*

USB

- USB-C to USB-C: Video (DP Alt mode), Data, Power delivery
- USB-C to USB-A: Video, Data
- Power delivery: USB PD version 3.0
- USB-C max. power delivery: Up to 65 watts (5 V/3 A, 9 V/3 A, 10 V/3 A, 12 V/3 A, 15 V/3 A, 20 V/3.25 A)

Convenience

- Built-in Speakers: 2 W x 2
- Built-in webcam: 2.0 megapixel FHD camera with microphone and LED indicator (for Windows 10 Hello)
- User convenience: SmartImage, Input, PowerSensor, Menu, Power On/Off
- Control software: SmartControl
- OSD Languages: Brazil Portuguese, Czech, Dutch, English, Finnish, French, German, Greek, Hungarian, Italian, Japanese, Korean, Polish, Portuguese, Russian, Simplified Chinese, Spanish,

- Swedish, Traditional Chinese, Turkish, Ukrainian
- Other convenience: Kensington lock, VESA mount (100 x 100 mm)
- Plug and Play Compatibility: DDC/CI, Mac OS X, sRGB, Windows 10 / 8.1 / 8 / 7

Stand

- Height adjustment: 150 mm
- Pivot: 90 degree
- Swivel: -175/175 degree
- Tilt: -5/30 degree

Power

- ECO mode: 13.7 W (typ.)
- On mode: 16.7 W (typ.) (EnergyStar 7.0 test method)
- Standby mode: < 0.5 W (typ.)
- Off mode: Zero watts with Zero switch
- Energy Label Class: E
- Power LED indicator: Operation - White, Standby mode - White (flashing)
- Power supply: Built-in, 100–240 VAC, 50–60 Hz

Dimensions

- Product with stand (max height): 541 x 527 x 257 mm
- Product without stand (mm): 541 x 332 x 57 mm
- Packaging in mm (W x H x D): 603 x 492 x 224 mm

Weight

- Product with stand (kg): 6.30 kg
- Product without stand (kg): 3.87 kg
- Product with packaging (kg): 8.99 kg

Operating conditions

- Temperature range (operation): 0°C to 40°C °C
- Temperature range (storage): -20°C to 60°C °C
- Relative humidity: 20%-80 %
- Altitude: Operation: +12,000 ft (3658 m), Non-operation: +40,000 ft (12,192 m)
- MTBF (demonstrated): 70,000 hrs (excluded backlight)

Sustainability

- Environmental and energy: PowerSensor, EnergyStar 7.0, EPEAT*, TCO Certified Edge, RoHS, WEEE
- Recyclable packaging material: 100 %
- Post-consumer recycled plastic: 85%
- Specific Substances: PVC/BFR free housing, Mercury free

Compliance and standards

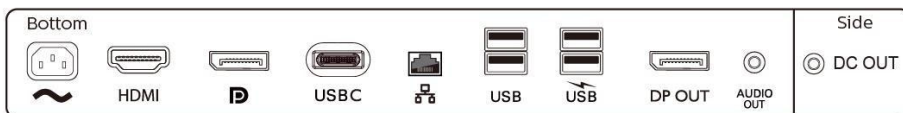
- Regulatory Approvals: CE Mark, FCC Class B, SEMKO, cETLus, CU-EAC, TUV Ergo, TUV/GS, EPA, UKRAINIAN, ICES-003, CB, KUCAS, SASO

Cabinet

- Front bezel: Black
- Rear cover: Black
- Foot: Black
- Finish: Texture

What's in the box?

- Monitor with stand
- Cables: HDMI cable, DP cable, USB-C to C/A cable, DC out cable, Power cable
- User Documentation



Issue date 2021-03-16

Version: 6.0.2

12 NC: 8670 001 57925
EAN: 87 12581 75672 7

© 2021 Koninklijke Philips N.V.
All Rights reserved.

Specifications are subject to change without notice.
Trademarks are the property of Koninklijke Philips N.V.
or their respective owners.

www.philips.com

* "IPS" word mark / trademark and related patents on technologies belong to their respective owners.
* The maximum resolution works for either HDMI, DP or USB-C input.
* Response time value equal to SmartResponse
* NTSC Area based on CIE 1976
* sRGB Area based on CIE1931
* For Video transmission via USB-C, your Notebook/device must support USB-C DP Alt mode
* For USB-C power and charging function, your Notebook/device must support USB-C standard Power Delivery specifications. Please check with your Notebook user manual or manufacturer for more details.
* Activities such as screen sharing and online streaming over the Internet can impact your network performance. Your hardware and network bandwidth will determine the overall audio and video quality.
* DisplayPort out works only under either DP in or USB-C in.
* DC power out function only supports Intel NUC with 19 V, max 65 W. Only one PC or notebook should be connected to either USB-C or DC out port for power passthrough function.
* If your Ethernet connection seems slow, please enter the OSD menu and select USB 3.0 or a higher version that can support the LAN speed up to 1G.
* EPEAT rating is valid only where Philips registers the product. Please visit <https://www.epeat.net/> for registration status in your country.
* The monitor may look different from feature images.