

Philips  
LCD monitor

### E Line

24 (23.8"/60.5 cm diag.)  
2560 x 1440 (QHD)

245E1S



## Simply stunning

The 24" E-Line monitor features stunning visuals and elegant design for a stylish enhancement to your workspace. Experience crystal-clear Quad HD visuals and smooth action with AMD FreeSync technology.

#### Superb Picture Quality

- IPS LED wide view technology for image and colour accuracy
- Crystal clear images with Quad HD 2560 x 1440 pixels
- Ultra Wide-Color wider range of colours for a vivid picture
- Effortlessly smooth gameplay with AMD FreeSync™ technology
- SmartContrast for rich black details
- SmartImage game mode optimised for gamers

#### Features designed for you

- Less eye fatigue with Flicker-Free technology
- LowBlue Mode for easy-on-the-eyes productivity
- HDMI ensures universal digital connectivity
- DisplayPort connection for maximum visuals

#### Greener every day

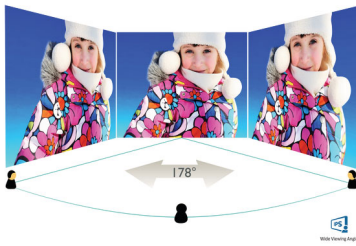
- Mercury Free eco-friendly display

# PHILIPS

LCD monitor  
E Line 24 (23.8"/60.5 cm diag.), 2560 x 1440 (QHD)

# Highlights

## IPS technology



IPS displays use an advanced technology that gives you extra-wide viewing angles of 178/178 degrees, making it possible to view the display from almost any angle. Unlike standard TN panels, IPS displays give you remarkably crisp images with vivid colours, making them ideal not only for Photos, movies and web browsing, but also for professional applications that demand colour accuracy and consistent brightness at all times.

## CrystalClear images



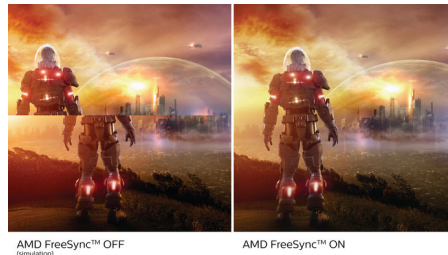
These Philips screens deliver Crystal Clear, Quad HD 2560 x 1440 or 2560 x 1080 pixel images. Utilising high-performance panels with high-density pixel count, enabled by high-bandwidth sources like Displayport, HDMI and Dual link DVI, these new displays will make your images and graphics come alive. Whether you are a demanding professional requiring extremely detailed information for CAD-CAM solutions, a user of 3D graphic applications or a financial wizard working on huge spreadsheets, Philips displays will give you Crystal Clear images.

## Ultra Wide-Color Technology



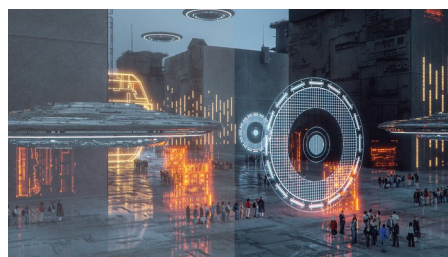
Ultra Wide-Color Technology delivers a wider spectrum of colours for a more brilliant picture. The Ultra Wide-Color wider "colour gamut" produces more natural-looking greens, vivid reds and deeper blues. Bring media entertainment, images and even productivity more alive with vivid colours from Ultra Wide-Color Technology.

## Ultra-smooth gaming



Gaming shouldn't be a choice between choppy gameplay or broken frames. With the new Philips monitor it doesn't have to be. Get fluid, artefact-free performance at virtually any frame rate with AMD FreeSync™ technology, smooth, quick refresh and ultra-fast response time.

## SmartImage Game mode



The new Philips gaming display has quick-access OSD fine-tuned for gamers, offering you

245E1S/00

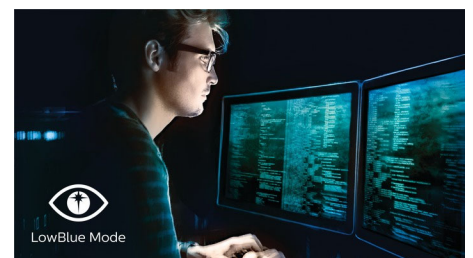
multiple options. "FPS" mode (First person shooting) improves dark themes in games, allowing you to see hidden objects in dark areas. "Racing" mode adapts the display with the fastest response time and high colour, along with image adjustments. "RTS" mode (Real-time strategy) has a special SmartFrame mode that enables highlighting of specific area and allows for size and image adjustments. Gamer 1 and Gamer 2 enable you to save personal customised settings based on different games, ensuring best performance.

## Flicker-Free technology



Due to the way brightness is controlled on LED-backlit screens, some users experience flicker on their screen which causes eye fatigue. Philips Flicker-Free technology applies a new solution to regulate brightness and reduce flicker for more comfortable viewing.

## LowBlue Mode



Studies have shown that just as ultra-violet rays can cause eye damage, shortwave-length blue light rays from LED displays can cause eye damage and affect vision over time. Developed for wellbeing, the Philips LowBlue Mode setting uses a smart software technology to reduce harmful shortwave blue light.



# Specifications

## Picture/Display

- LCD panel type: IPS technology
- AMD FreeSync™ technology
- Backlight type: W-LED system
- Panel Size: 23.8 inch/60.5 cm
- Display Screen Coating: Anti-Glare, 3H, Haze 25%
- Effective viewing area: 526.9 (H) x 296.4 (V)
- Aspect ratio: 16:9
- Maximum resolution: 2560 x 1440 @ 75 Hz\*
- Pixel Density: 123 PPI
- Response time (typical): 4 ms (Grey to Grey)\*
- Brightness: 250 cd/m<sup>2</sup>
- Contrast ratio (typical): 1000:1
- SmartContrast: Mega Infinity DCR
- Pixel pitch: 0.206 x 0.206 mm
- Viewing angle: 178° (H)/178° (V), @ C/R > 10
- Picture enhancement: SmartImage game
- Colour gamut (typical): NTSC 100%\*, sRGB 117%\*
- Display colours: 16.7 M
- Scanning Frequency: 54 - 84 kHz (H) / 49 - 75 Hz (V)
- sRGB
- Flicker-free
- LowBlue Mode

## Connectivity

- Signal Input: VGA (Analogue), DisplayPort 1.2, HDMI 1.4
- Sync Input: Separate Sync, Sync on Green
- Audio (In/Out): Audio out

## Convenience

- User convenience: Power On/Off, Menu, Brightness, Input, SmartImage Game
- OSD Languages: Brazil Portuguese, Czech, Dutch, English, Finnish, French, German, Greek, Hungarian, Italian, Japanese, Korean, Polish, Portuguese, Russian, Simplified Chinese, Spanish, Swedish, Traditional Chinese, Turkish, Ukrainian
- Other convenience: Kensington lock, VESA mount (100 x 100 mm)
- Plug and Play Compatibility: DDC/CI, Mac OS X, sRGB, Windows 10 / 8.1 / 8 / 7

## Stand

- Tilt: -5/20 degree

## Power

- On mode: 17.94 W (typ.) (EnergyStar 7.0 test method)
- Standby mode: < 0.5 W (typ.)
- Off mode: < 0.3 W (typ.)
- Energy Label Class: E
- Power LED indicator: Operation - White, Standby mode - White (flashing)
- Power supply: External, 100–240 VAC, 50–60 Hz

## Dimensions

- Product with stand (mm): 540 x 414 x 195 mm
- Product without stand (mm): 540 x 325 x 43 mm
- Packaging in mm (W x H x D): 586 x 462 x 127 mm

## Weight

- Product with stand (kg): 3.24 kg
- Product without stand (kg): 2.56 kg
- Product with packaging (kg): 4.68 kg

## Operating conditions

- Temperature range (operation): 0 to 40 °C
- Temperature range (storage): -20 to 60 °C
- Relative humidity: 20%-80 %
- Altitude: Operation: +12,000 ft (3658 m), Non-operation: +40,000 ft (12,192 m)
- MTBF: 50,000 hrs (excluding backlight) hour(s)

## Sustainability

- Environmental and energy: EnergyStar 7.0, RoHS, Mercury Free, WEEE
- Recyclable packaging material: 100 %

## Compliance and standards

- Regulatory Approvals: CU-EAC, EPA, CE Mark, FCC Class B, CB, UKRAINIAN

## Cabinet

- Colour: Black
- Finish: Textured

## What's in the box?

- Monitor with stand
- Cables: HDMI cable, Power cable
- User Documentation



Issue date 2021-06-16

Version: 8.0.1

12 NC: 8670 001 59229  
EAN: 87 12581 75853 0

© 2021 Koninklijke Philips N.V.  
All Rights reserved.

Specifications are subject to change without notice.  
Trademarks are the property of Koninklijke Philips N.V.  
or their respective owners.

[www.philips.com](http://www.philips.com)

\* "IPS" word mark / trademark and related patents on technologies belong to their respective owners.  
\* Response time value equal to SmartResponse  
\* The maximum resolution works for either HDMI input or DP input.  
\* NTSC Area based on CIE 1976  
\* sRGB Area based on CIE1931  
\* 2020 Advanced Micro Devices, Inc. All rights reserved. AMD, the AMD Arrow logo, AMD FreeSync™ and combinations thereof are trademarks of Advanced Micro Devices, Inc. Other product names used in this publication are for identification purposes only and may be trademarks of their respective companies.  
\* The monitor may look different from feature images.