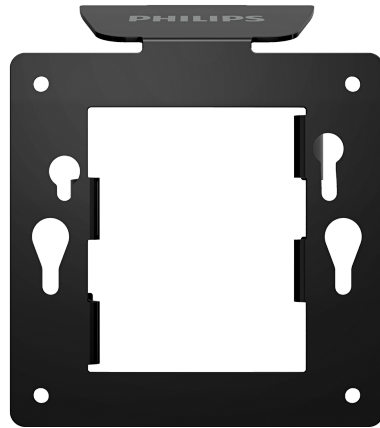


**PHILIPS**

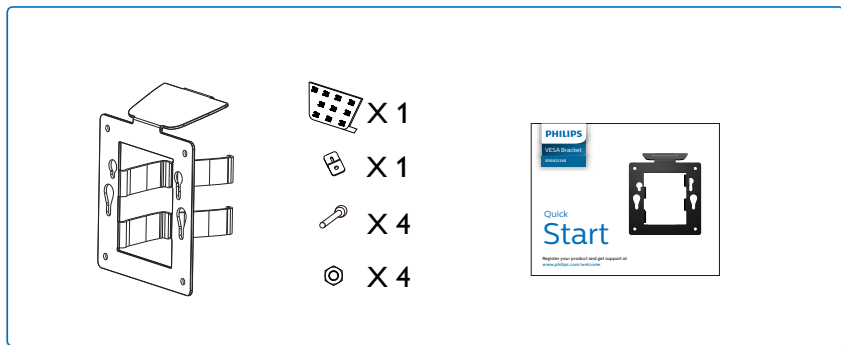
VEESA Bracket

BS6B3234B



# Quick Start

Register your product and get support at [www.philips.com/welcome](http://www.philips.com/welcome)



Version: M6BS6B3234Q1T



Q41G78D281376A

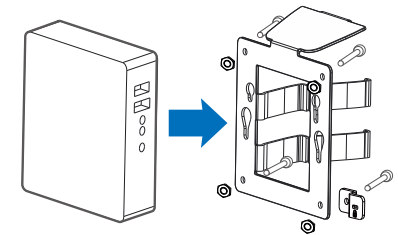
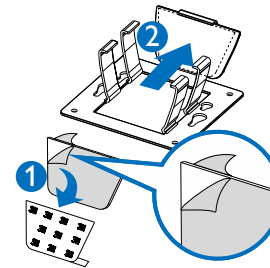
Compatible with Philips Height Adjustment Base of 328P6/328B6/BDM3275/BDM3270/BDM3470/349P7

### Option:

Paste the adhesive foam strip to the VESA bracket under the top side and attach it on the monitor stand. This is an optional step. If you don't want to stick VESA bracket to the monitor stand, go to next step.

1

Align holes of VESA compliant device with those of bracket and screw up with the screws provided.



2

Kensington Lock.

3

Slide down the bracket with mounted device into Philips Height Adjustment base.

