

Philips  
Curved UltraWide LCD  
Monitor with USB-C

## B Line

34" (86.36 cm)  
WQHD (3440 x 1440)

346B1C



# See more. Do more.

The Philips B line 34" curved UltraWide display gives wrap-around view of your work. All-in-one USB-C and ergonomic stand design make for optimal working conditions. Eye comfort features with TUV certified to reduce eye fatigue.

### Better view, better productivity

- CrystalClear images with UltraWide QHD 3440 x 1440 pixels
- VA display delivers awesome images with wide viewing angles
- MultiView enables simultaneous dual connect and view
- Built-in KVM switch to easily switch between sources
- Effortlessly smooth action with Adaptive-Sync technology

### Designed for the way you work

- Built-in USB-C docking station
- Less eye fatigue with Flicker-Free technology
- LowBlue Mode for easy-on-the-eyes productivity
- EasyRead mode for a paper-like reading experience
- Tilt, swivel and height-adjust for an ideal viewing position
- VESA mount allows for the perfect setup

### Designed for sustainability

- PowerSensor saves up to 80% energy costs

# PHILIPS

# Highlights

## UltraWide CrystalClear images



These Philips screens deliver Crystal Clear, UltraWide Quad HD 3440 x 1440 pixel images. Utilising high-performance panels with high-density pixel count and 178/178 wide viewing angles, these new displays will make your images and graphics come alive. The UltraWide 21:9 format enables more productivity with more room for side-by-side comparisons and more viewable spreadsheet columns. Whether you are a demanding professional requiring extremely detailed information for CAD-CAM solutions or a financial wizard working on huge spreadsheets, Philips displays deliver Crystal Clear images.

## MultiView technology

With the ultra-high resolution Philips MultiView display, you can now experience a world of connectivity. MultiView enables active dual connect and view so that you can work with multiple devices like a PC and notebook simultaneously, for complex multitasking.

## MultiClient Integrated KVM



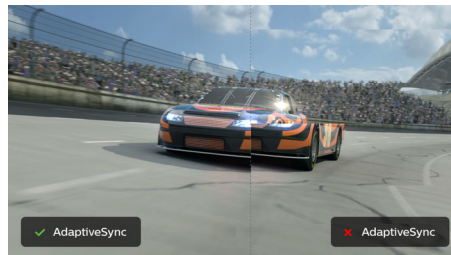
With the MultiClient Integrated KVM switch, you can control two separate PCs with one monitor-keyboard-mouse setup. A convenient button allows you to quickly switch between sources. Handy with setups that require dual PC computing power or sharing one large monitor to show two different PCs.

## Built-in USB-C docking station



This Philips display features a built-in USB type-C docking station with power delivery. Its slim, reversible USB-C connector allows for easy, one-cable docking. Keep it simple by connecting all your peripherals, like your keyboard, mouse and your RJ-45 Ethernet cable to the monitor's docking station. Simply connect your notebook to this monitor with a single USB-C cable to watch high-resolution video and transfer super-speed data while powering up and recharging your notebook at the same time.

## Adaptive-Sync technology



Gaming shouldn't be a choice between choppy gameplay or broken frames. Get fluid, artefact-free performance at virtually any frame rate with Adaptive-Sync technology, smooth quick refresh and ultra-fast response time.

## Flicker-Free technology



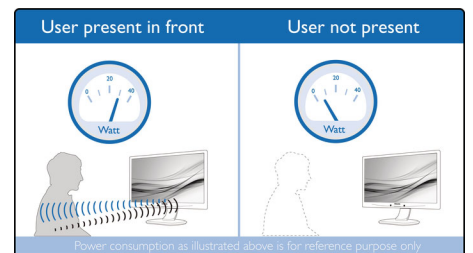
Due to the way brightness is controlled on LED-backlit screens, some users experience flicker on their screen which causes eye fatigue. Philips Flicker-Free technology applies a new solution to regulate brightness and reduce flicker for more comfortable viewing.

## LowBlue Mode



Studies have shown that just as ultra-violet rays can cause eye damage, shortwave-length blue light rays from LED displays can cause eye damage and affect vision over time. Developed for wellbeing, the Philips LowBlue Mode setting uses a smart software technology to reduce harmful shortwave blue light.

## PowerSensor



PowerSensor is a built-in 'people sensor' that transmits and receives harmless infrared signals to determine if the user is present and then automatically reduces monitor brightness when the user steps away from the desk, cutting energy costs by up to 80 percent and prolonging monitor life.



USB-C Docking



Curved UltraWide



WQHD



MultiView



MultiClient Integrated KVM



Adaptive-Sync



Flicker-free



LowBlue Mode



HDMI HIGH DEFINITION MULTIMEDIA INTERFACE

# Specifications

## Picture/Display

- LCD panel type: VA LCD
- Backlight type: W-LED system
- Panel Size: 34 inch / 86.36 cm
- Display Screen Coating: Anti-Glare, 2H, Haze 25%
- Effective viewing area: 797.2 (H) x 333.7 (V) — at a 1500 R curvature\*
- Aspect ratio: 21:9
- Maximum resolution: 3440 x 1440 @ 100 Hz\*
- Pixel Density: 110 PPI
- Response time (typical): 5 ms (Grey to Grey)\*
- Brightness: 300 cd/m<sup>2</sup>
- Contrast ratio (typical): 3000:1
- SmartContrast: 80,000,000 :1
- Pixel pitch: 0.232 x 0.232 mm
- Viewing angle: 178° (H)/178° (V), @ C/R > 10
- Flicker-free
- Picture enhancement: SmartImage
- Display colours: 16.7 M
- Colour gamut (typical): NTSC 100%\*, sRGB 119%\*, Adobe RGB 90%\*
- Scanning Frequency: 30–160 kHz (H)/48–100 Hz (V)
- SmartUniformity: 93 ~ 105%
- Delta E: < 2 (sRGB)
- sRGB
- LowBlue Mode
- EasyRead
- Adaptive sync

## Connectivity

- Signal Input: DisplayPort 1.2 x 1, HDMI 2.0 x 1, USB-C 3.2 Gen 1 x 1 (upstream, power delivery up to 90 W)
- HDCP: HDCP 1.4 (DP/USB-C), HDCP 2.2 (HDMI)
- USB: USB-C x 1, USB-B x 1 (upstream), USB 3.2 x 4 (downstream with 1 fast charge B.C 1.2)
- Audio (In/Out): Headphone out
- RJ45: Ethernet LAN (10 M/100 M/1 G)\*
- Sync Input: Separate Sync, Sync on Green

## USB docking

- USB-C: Reversible plug connector
- Super speed: Data and Video transfer
- DP: Built-in Display Port Alt mode
- USB-C power delivery: USB PD version 3.0
- USB-C max. power delivery: Up to 90 W (5 V/3 A; 7 V/3 A; 9 V/3 A; 10 V/3 A; 12 V/3 A; 15 V/3 A; 20 V/4.5 A)

## Convenience

- Built-in Speakers: 5 W x 2
- MultiView: PIP/PBP mode, 2 x devices
- User convenience: SmartImage, Input, User, Menu, Power On/Off
- Control software: SmartControl
- OSD Languages: Brazil Portuguese, Czech, Dutch, English, French, Finnish, German, Greek, Hungarian, Italian, Japanese, Korean, Portuguese, Polish, Russian, Simplified Chinese, Spanish, Swedish, Traditional Chinese, Turkish, Ukrainian
- Other convenience: Kensington lock, VESA mount (100 x 100 mm)
- Plug and Play Compatibility: DDC/CI, Mac OS X,

sRGB, Windows 10 / 8.1 / 8 / 7

## Stand

- Height adjustment: 180 mm
- Swivel: -180/180 degree
- Tilt: -5/30 degree

## Power

- ECO mode: 34 W (typ.)
- On mode: 46.8 W (typ.) (EnergyStar 7.0 test method)
- Standby mode: 0.3 W (typ.)
- Off mode: Zero watts with Zero switch
- Energy Label Class: B
- Power LED indicator: Operation - White, Standby mode - White (flashing)
- Power supply: Built-in, 100–240 VAC, 50–60 Hz

## Dimensions

- Product with stand (max height): 807 x 601 x 250 mm
- Product without stand (mm): 807 x 367 x 110 mm
- Packaging in mm (W x H x D): 930 x 525 x 282 mm

## Weight

- Product with stand (kg): 11.49 kg
- Product without stand (kg): 7.79 kg
- Product with packaging (kg): 15.32 kg

## Operating conditions

- Temperature range (operation): 0°C to 40°C °C
- Temperature range (storage): -20°C to 60°C °C
- Relative humidity: 20% to 80% %
- Altitude: Operation: +12,000 ft (3658 m), Non-operation: +40,000 ft (12,192 m)
- MTBF (demonstrated): 70,000 hrs (excluded backlight)

## Sustainability

- Environmental and energy: PowerSensor, LightSensor, EnergyStar 7.0, EPEAT\*, TCO Certified, RoHS
- Recyclable packaging material: 100 %
- Specific Substances: Mercury free, Lead free, PVC/BFR free housing

## Compliance and standards

- Regulatory Approvals: CE Mark, FCC Class B, EPA, cETLus, SEMKO, TUV-BAUART, TUV/ISO9241-307, UKRAINIAN, CU-EAC

## Cabinet

- Foot: Black
- Rear cover: Black
- Front bezel: Black
- Finish: Texture

## What's in the box?

- Monitor with stand
- Cables: HDMI cable, DP cable, USB-C/A Y cable, Power cable
- User Documentation



Issue date 2019-11-07

Version: 4.0.1

12 NC: 8670 001 60984  
EAN: 87 12581 76081 6

© 2019 Koninklijke Philips N.V.  
All Rights reserved.

Specifications are subject to change without notice.  
Trademarks are the property of Koninklijke Philips N.V.  
or their respective owners.

[www.philips.com](http://www.philips.com)

\* Radius of the arc of the display curvature in mm

\* The maximum resolution works for either HDMI, DP or USB-C input.

\* The USB hub default setting of USB C input for this monitor is "USB 3.2". The resolution supported by USB 3.2 is 3440 x 1440 @ 60 Hz. When user switches to USB 2.0, the resolution supported will be 3440 x 1440 @ 100 Hz.

\* Response time value equal to SmartResponse

\* NTSC Area based on CIE 1976

\* sRGB Area based on CIE 1931

\* Adobe RGB Coverage based on CIE 1976

\* For Video transmission via USB-C, your Notebook/device must support USB-C DP Alt mode

\* Activities such as screen sharing and online streaming over the Internet can impact your network performance. Your hardware and network bandwidth will determine the overall audio and video quality.

\* For USB-C power and charging function, your Notebook/device must support USB-C standard Power Delivery specifications. Please check with your Notebook user manual or manufacturer for more details.

\* If your Ethernet connection seems slow, please enter OSD menu and select USB 3.2 which supports the LAN speed to 1G.

\* Cannot support USB-C vs HDMI for PIP/PBP at the same time

\* EPEAT rating is valid only where Philips registers the product. Please visit <https://www.epeat.net/> for registration status in your country.

\* The monitor may look different from feature images.