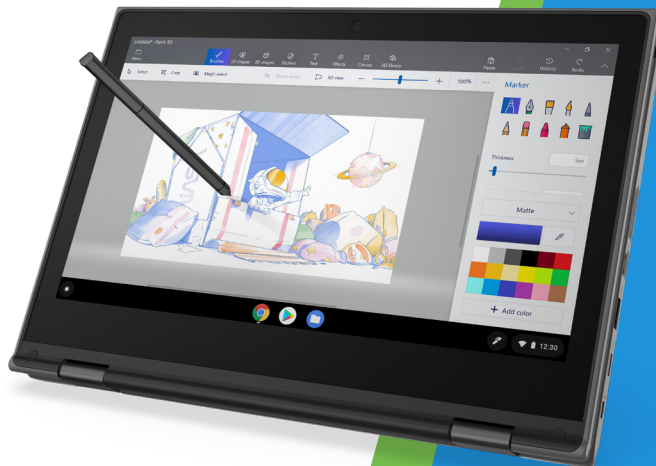


Brighter, lighter and built for better learning.

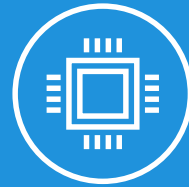
THE NEW 500e IS PREPPED AND READY FOR CLASS.

An educational powerhouse, the 500e was made for the love of learning. Its superior design and premium features were created to make classwork more effective and efficient for both teachers and students. The Gorilla-Glass HD touch screen and 360° Hinge make it easy for students to interact and excel in any classroom environment. While the highly accurate EMR pen is perfect for note-taking, graphic design and even the most complex math problem. In addition to its superior multi-touch experience, the 500e also features a world-facing camera that allows students to snap and share their work in real-time. Plus, with access to G Suite for Education, Google Classroom and thousands of popular education apps, the possibilities of creating a collaborative learning environment are infinite.



TOUCH TECH ON TOP

When it comes to multi-touch capabilities, the 500e's in a class of its own. The 11.6" HD durable display was built to withstand the wear and tear of even the most powerful fingers. And when fingers just won't do, the pressure-sensitive EMR pen is there to help. Stored in its own built-in compartment, its real pen-like design makes it easy to use. And since it never requires a charge, it can be shared amongst classmates and classrooms.



SIMPLE, SMART & STATE-OF-THE-ART

Thanks to an Intel GLK Performance Processor that moves faster than your fingertips, accessing your favorite education apps is quick and easy on the 500e. Plus with tools like G Suite for Education and Google Classroom, students and teachers can enjoy a secure, seamless interaction in class or at home, all under the watchful eye of school administrators. Add in a world-facing camera that can capture photos and videos from any direction, and you've got a next level learning tool.



SAFE & STURDY

Whether it's the rubber bumpers built to withstand drops, the flexibility of a 360° Hinge or the chemically-strengthened touch screen designed to resist damage, the 500e is durability done right. In addition to being built tough, it also includes a keyboard with mechanically anchored keys and a water-resistant design. When you combine all that with the safety and security of Chromebook, you've got a machine that will measure up to any challenge.



LIGHT ON WEIGHT, BIG ON BATTERY

Weighing in at 2.9 lbs and 20.35 mm thin, the 500e is thinner and lighter than most textbooks. But don't be fooled by its slim, sleek design; this efficient device comes equipped with up to 10 hours of battery life*, so it can last an entire school day on one charge.

*Based on Google Chrome Power_LoadTest, a battery run down test. For more information about Google Chrome Power_LoadTest, visit www.chromium.org. Test results should be used only to compare one product with another and are not a guarantee you will experience the same battery life. Battery life may be significantly less than the test results and varies depending on your product's configuration, software, usage, operating conditions, power management settings and other factors. Maximum battery life will decrease with time and use.

Lenovo 500e Chromebook

PERFORMANCE

Processor	Intel® Intel GLK Performance Processor
Operating System	Chrome OS™
Graphics	Intel® Integrated graphics
Memory	4 GB or 8 GB
Storage	32 GB or 64 GB eMMC
Audio	3.5mm Combo Audio
Battery	42 Whr, Up to 10 hrs*

DESIGN

Display	11.6" HD 10pt multi-touch display (1366x768) IPS 250
Camera	720p Front-Facing / 5p World-Facing
Pen	Garaged EMR Pen
Dimensions	290 x 204 x 20.35 mm / 11.41" x 8.03" x 0.8"
Weights	1.31kg, 2.9lbs
MIL-SPEC Standard	Yes
Keyboard	Water-resistant (330 ml) with touchpad & mechanically anchored keys
Durability Features	Reinforced ports & hinges, drop-resistant up to 29.5" (75cm)

CONNECTIVITY

Ports & Slots	2 x USB-C 3.1 Gen 1, 2 x USB 3.1 Gen 1, WiFi 802.11 AC (2 x 2), Bluetooth 4.2, Micro SD card reader Combo mic / audio jack, Kensington lock slot
---------------	--

lenovo.com/chromebook

Lenovo reserves the right to alter product offerings and specifications at any time, without notice. Lenovo makes every effort to ensure accuracy of all information but is not liable or responsible for any editorial, photographic or typographic errors. All images are for illustration purposes only. For full Lenovo product, service and warranty specifications visit www.lenovo.com. Lenovo makes no representations or warranties regarding third party products or services. Trademarks: The following are trademarks or registered trademarks of Lenovo: Lenovo, the Lenovo logo, ideapad, ideacentre, yoga and yoga home. Microsoft, Windows and Vista are registered trademarks of Microsoft Corporation. Ultrabook, Celeron, Celeron Inside, Core Inside, Intel, Intel Logo, Intel Atom, Intel Atom Inside, Intel Core, Intel Inside, Intel Inside Logo, Intel vPro, Itanium, Itanium Inside, Pentium, Pentium Inside, vPro Inside, Xeon, Xeon Phi, and Xeon Inside are trademarks of Intel Corporation in the U.S. and/or other countries. Chromebook is a registered trademark of Google Inc. Other company, product and service names may be trademarks or service marks of others. Battery life (and recharge times) will vary based on many factors including system settings and usage. Visit www.lenovo.com/lenovo/us/en/safecomp/ periodically for the latest information on safe and effective computing. ©2019 Lenovo. All rights reserved.

*Based on Google Chrome Power_LoadTest, a battery run down test. For more information about Google Chrome Power_LoadTest, visit www.chromium.org. Test results should be used only to compare one product with another and are not a guarantee you will experience the same battery life. Battery life may be significantly less than the test results and varies depending on your product's configuration, software, usage, operating conditions, power management settings and other factors. Maximum battery life will decrease with time and use.

LENOVO OFFERINGS & SERVICES

Chrome Education license

Chrome Education license enables IT administrators to manage a few or a fleet of Chrome devices within a centralized, easy and intuitive software interface. Lenovo makes it easy to acquire as an OEM authorized reseller of Chrome Education license.

Warranty upgrades - onsite and next business day

Maximize PC uptime and productivity by providing convenient, fast repair service at your organization.

Warranty extensions (1-3 years total duration)

This fixed-term, fixed-cost service helps accurately budget for Chromebook expenses, protects your valuable investment and lowers the cost of ownership over time.

Accidental damage protection

Avoid the hassles of unexpected repair costs. Provides coverage for non-warranted damage incurred under normal operating conditions, such as minor spills, drops or screen damage.

G Suite for Education

Easy access to Google's G Suite family of apps keeps everything under one roof and free of software licensing fees. Simple cloud management and 24/7 support make Chromebooks easily scalable to any size classrooms, big or small.

OPTIONS / ACCESSORIES



ThinkPad
USB-C Dock



Lenovo Wireless
Mouse Keyboard



Lenovo
On-Ear-Headphones



Lenovo
500e EMR Pen

Lenovo