



## Starter kit E27

### Hue White

Warm white light

Hue Bridge included

Control with app or voice\*



8718696785232



## Easy smart lighting

Get your smart lighting system started with this Starter kit, which includes three smart bulbs with soft white light, the Hue Bridge and a Switch. It's a complete kit for custom control over your home lighting and all its great features.



### Limitless possibilities

- Away-from-home smart light control
- Come home to a house filled with light
- Make it look like you're home with smart lights
- Control lights with your voice
- Mount the dimmer switch anywhere

# Highlights

## Control lights away from home



The Hue app gives you complete control over your lights, even if you're not home. Switch your lights off and on remotely using just the app to ensure your home is always lit the way you want it.

## Come home with light



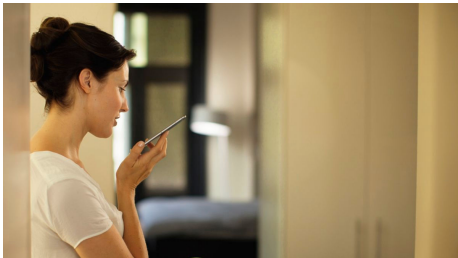
Set your Philips Hue app to recognise when you're almost home. Before you even step out of your car or walk up the path, your selected smart lights turn on automatically.

## Make it look like you're home



Use the Philips Hue app to schedule light routines whenever you're away. Your smart lights will turn on at the times you've selected, and sometimes a few minutes before or after, to truly mimic your presence in the house.

## Control with your voice



When connected to the Hue Bridge, you can pair your lights with Alexa, Apple HomeKit, and the Google Assistant and control your lights using just your voice. Simple voice commands let you turn your lights on and off, dim or brighten your lights, and even set a light scene.

## Mount anywhere



The Philips Hue Dimmer switch functions as a normal wall switch and dimmer – but better. In addition to mounting with screws or strong adhesive tape, you can remove the magnetic control and carry it with you anywhere.

# Specifications

### Lamp dimensions

- Dimensions (WxHxD): 61x110

### Design and finishing

- Colour: White

### Durability

- Number of switch cycles: 50,000
- Nominal lifetime: 25,000

### Environmental

- Operational humidity: 5% <H<95% (non-condensing)
- Operational temperature: -10 °C – 45 °C

**Extra feature/accessory incl.**

- Dimmable with the Hue app and switches: Yes

**Guarantee**

- 2 years: Yes

**Light characteristics**

- Colour rendering index (CRI): ≥80
- Colour temperature: 2700 K

**Packaging information**

- EAN: 8718696785232

**Power consumption**

- Standby power consumption: 0.5 W
- Energy efficiency label (EEL): F

**Service**

- Warranty: 2 year(s)

**Technical specifications**

- Diameter: 61 mm
- Weight: 67
- Bulb technology: LED
- Fitting/cap: E27
- IP code: IP20 | Finger-protected
- Lumen output at 2700K: 806
- EPREL Registration Number: 400273

**The Bridge**

- Frequency band: 2400-2483.5 MHz
- Height: 26 mm
- Length X Width: 88 x 88 mm
- Max. number of bulbs: 50
- Mounting options: Desktop, Wall
- Power adapter: 100–240 V AC / 50–60 Hz
- Power consumption: 250mA max

**The bulb**

- Form factor: A60
- Height: 110 mm
- Input voltage: 220V-240V
- Light output: Soft white light
- Lumen output: 806 lm
- Max. operation power: 9 W
- Power factor: >0.5
- Software upgradable: Yes
- Start up: Instant 100% light output
- Wattage: 9 W
- Wattage equivalent: 60 W
- Deep dimmable: No

**The switch**

- Batteries included: 1 x CR2450
- Frequency band: 2400-2483,5 MHz
- Lifetime: 50.000 clicks
- Max. lights per switch: 50 (with Hue Bridge)
- Minimal battery lifetime: 3 year(s)
- Mounting options: wall, freestanding
- Special features: Not applicable
- Switch depth: 11 mm
- Switch height: 92 mm
- Switch width: 35 mm
- Wall plate depth: 14 mm
- Wall plate height: 115 mm
- Wall plate width: 70 mm
- Weight including wall plate: 67 g
- Weight of switch: 37 g
- Zigbee Light link: IEEE 802.15.4 Protocol

**What's in the box**

- Bridge: 1
- Ethernet network cable: 1
- Hue bulbs: 3
- Hue dimmer switch: 1
- Power adapter: 1

**What's supported**

- Compatible with Effects feature: Yes
- HomeKit compatible: Yes
- Philips Hue App: Android 10.0 and above, iOS 16 or later
- Voice assistants (Hue Bridge required): Amazon Alexa, Google Assistant, Apple HomeKit, Microsoft Cortana
- WiFi: Works without Wi-Fi
- Defined support period: Minimum of 48 months after introduction date
- Max. number of accessories: 12 (with Hue Bridge)
- Communication protocol: Bluetooth, Zigbee

# Box specifications

## Packaging dimensions and weight

- EAN/UPC - product: 8718696785232
- Net weight: 0.55 kg
- Gross weight: 0.76 kg
- Height: 10.1 cm
- Length: 21 cm
- Width: 21 cm



© 2025 Signify Holding. All rights reserved. Signify does not give any representation or warranty as to the accuracy or completeness of the information included herein and shall not be liable for any action in reliance thereon. The information presented in this document is not intended as any commercial offer and does not form part of any quotation or contract, unless otherwise agreed by Signify. Philips and the Philips Shield Emblem are registered trademarks of Koninklijke Philips N.V.