

Sumo 270° Mounting Arm

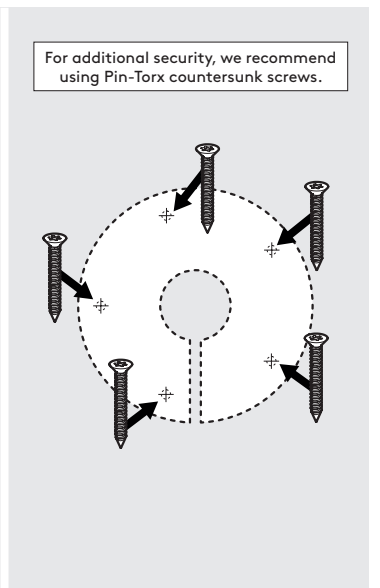
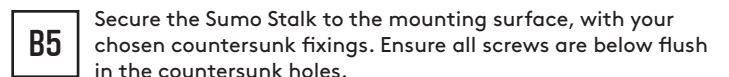
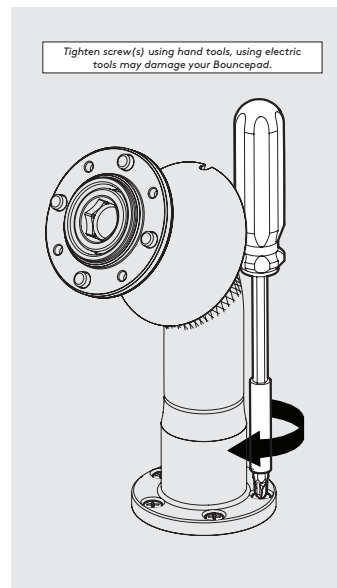
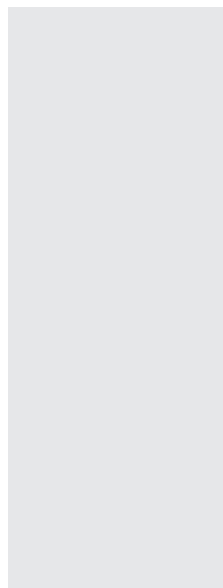
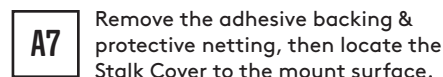
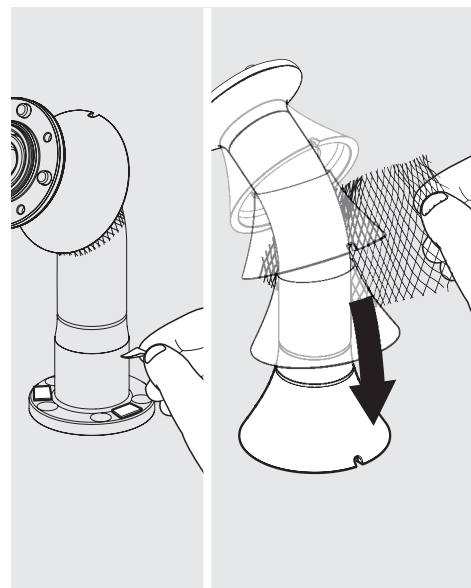
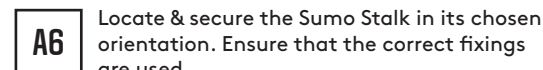
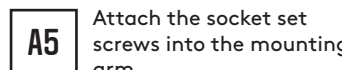
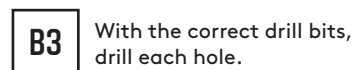
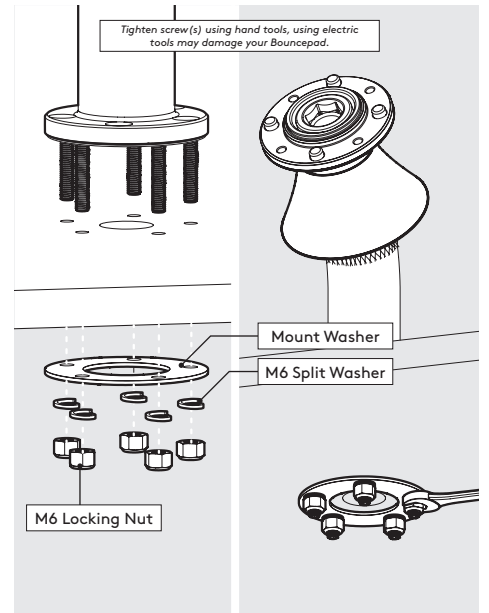
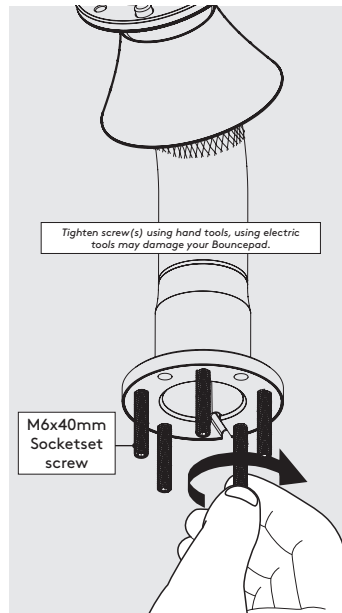
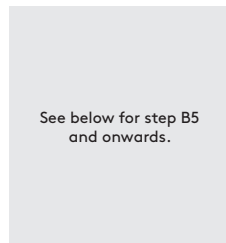
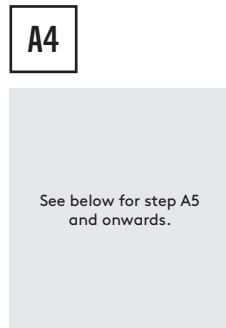
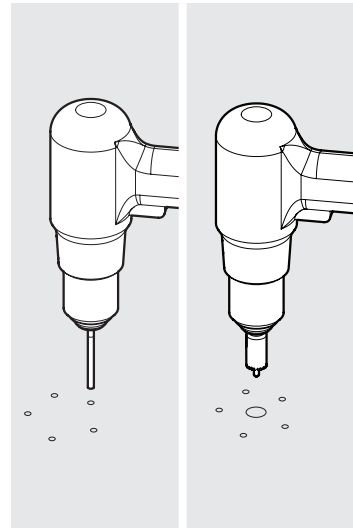
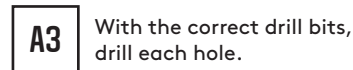
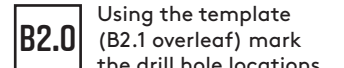
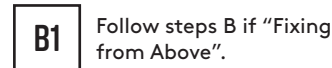
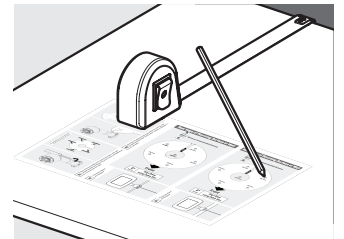
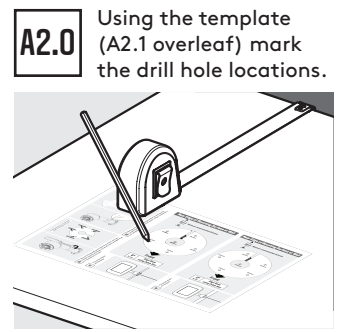
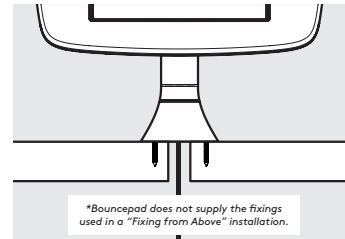
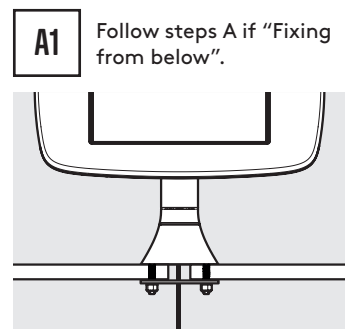
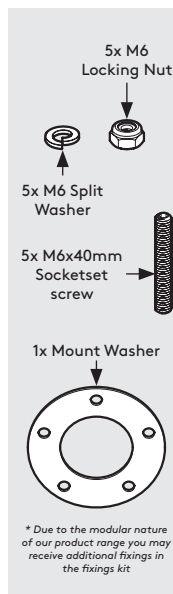
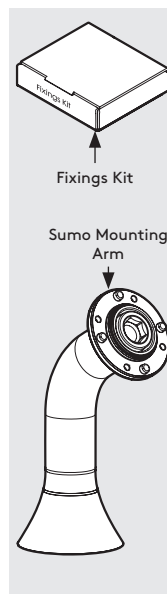
Assembly Instructions

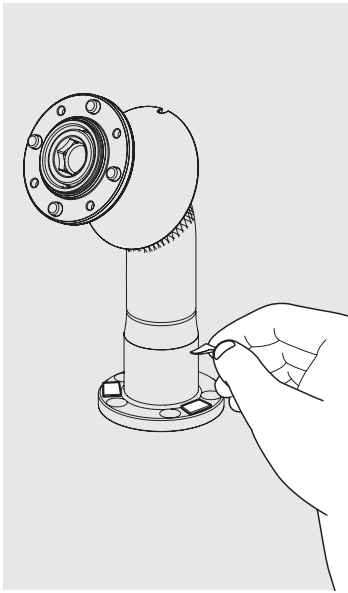
Tools Required:

- Pencil
- Drill
- Ø6.0mm Drillbit
- Ø2.5mm Drillbit
- Ø16.0mm Holesaw
- 10mm Spanner **or adjustable spanner*

Sheet Code: BP-IM-055_REV0
Release Date: 01/10/2019

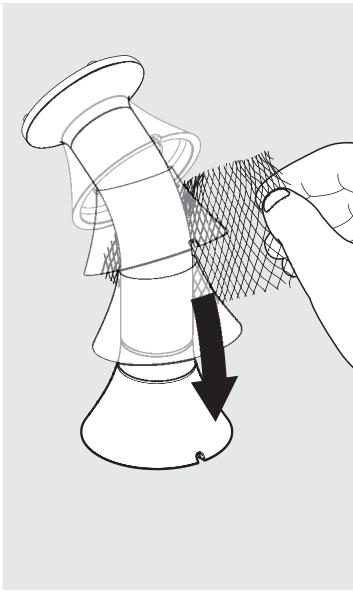
Copyright 2016 Spotspot Ltd. (T/A Bouncepad) all rights reserved. Confidential, no part of this publication may be reproduced or transmitted in any form without the written permission of the copyright holder.





B6

Remove the adhesive backing & protective netting, then locate the Stalk Cover to the mount surface. Installation is complete.

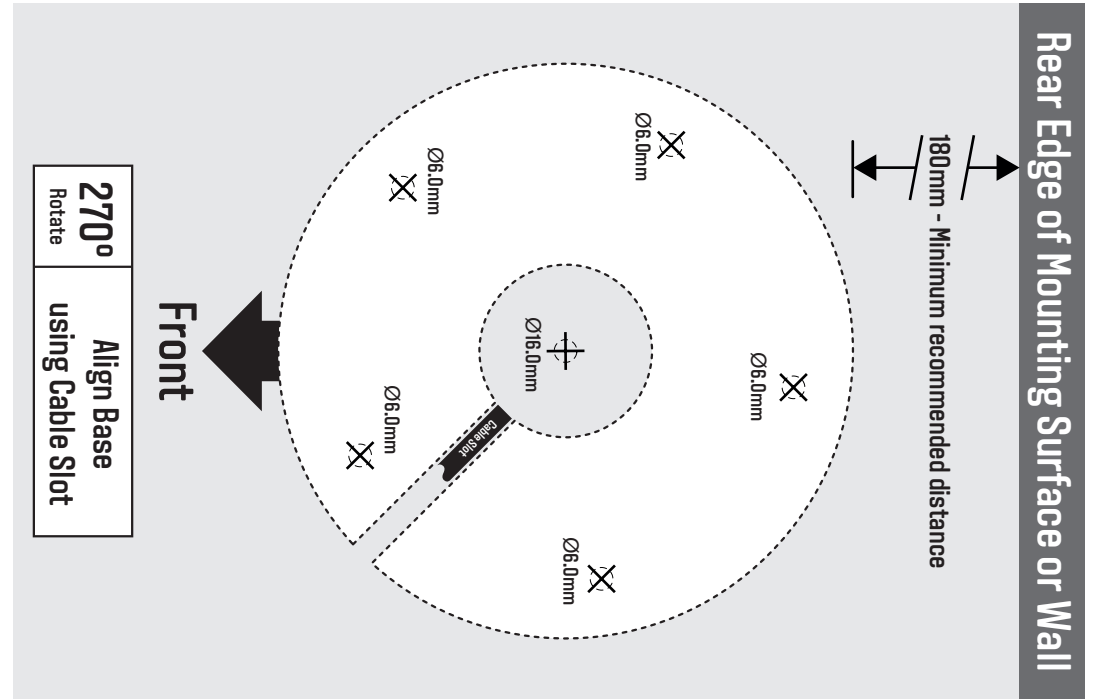
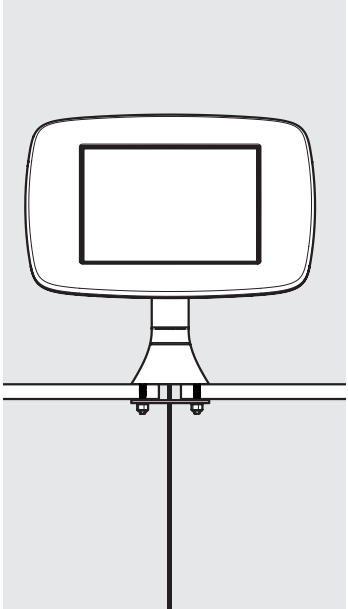


B7

Installation complete.

A2.1

"Fixing from Below"
drill template



B2.1

"Fixing from Above"
drill template

