

SIEMENS



Fully automatic espresso machine

TI351..., TI35A...

de Gebrauchsanleitung
en Instruction manual

fr Mode d'emploi
it Istruzioni per l'uso



Register your product on My Siemens
and discover exclusive services and offers.
siemens-home.bsh-group.com/welcome

The future moving in.

Siemens Home Appliances



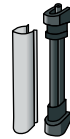
A



B

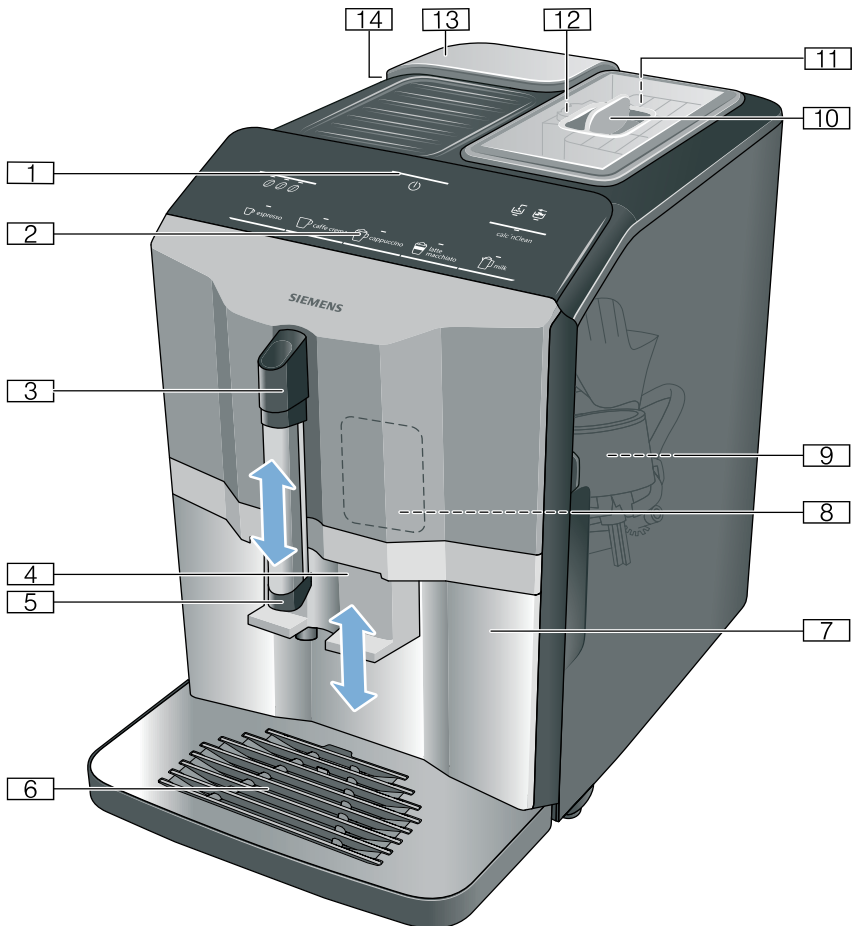


C

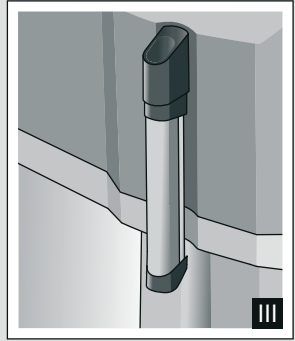
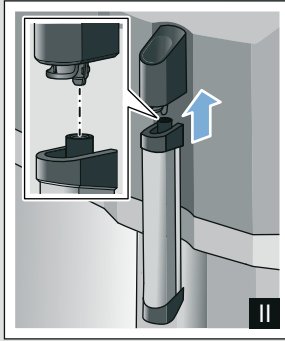
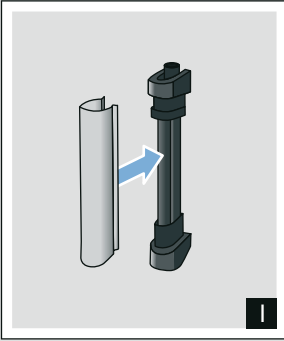


D

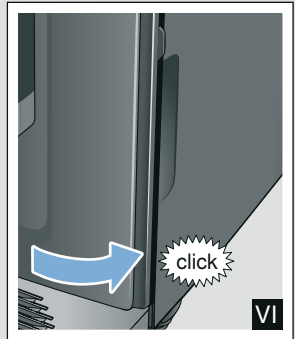
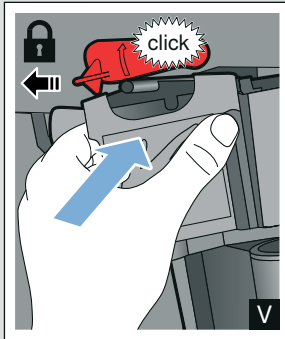
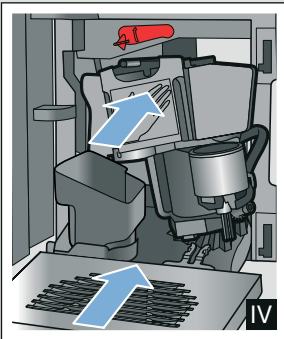
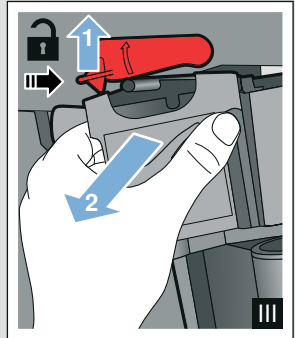
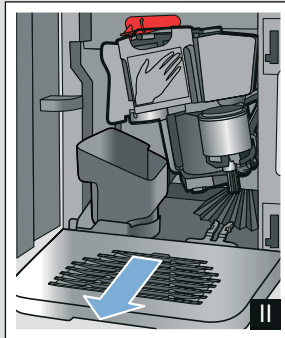
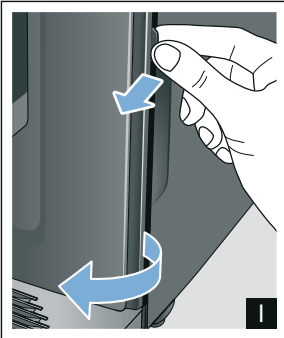
1



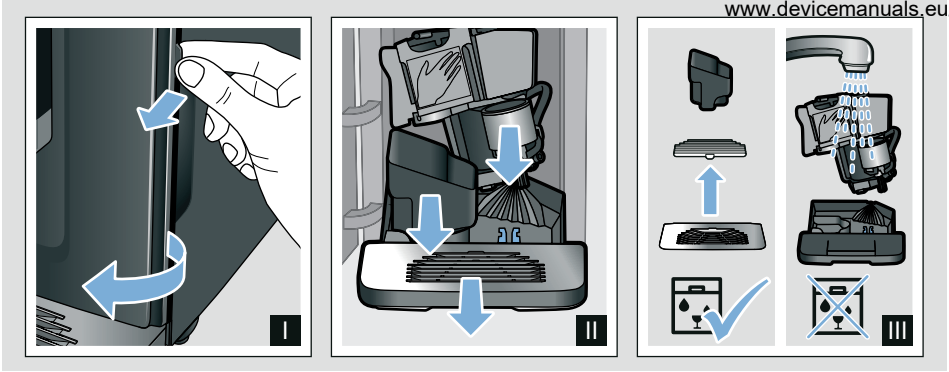
2



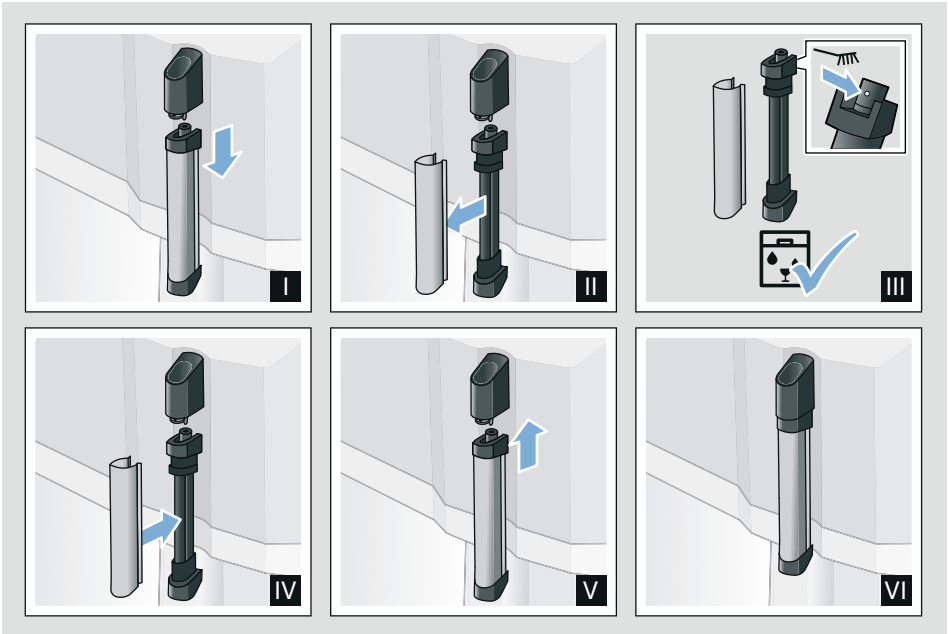
3



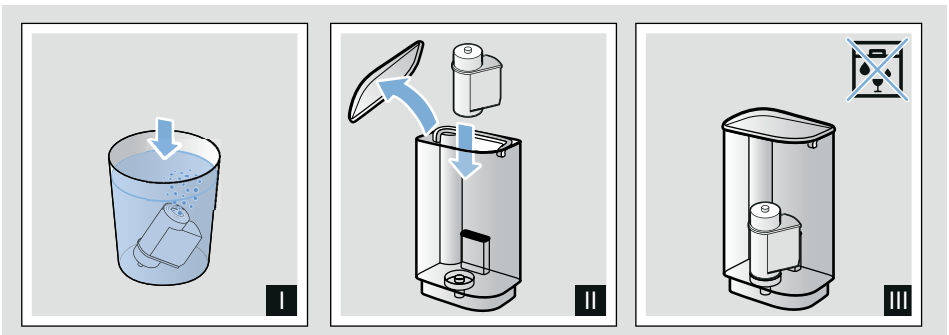
4



5










6



7

Table of contents

	Intended use	31
	Important safety information . .	31
	Environmental protection	33
	Saving energy	33
	Environmentally-friendly disposal . .	33
	Getting to know your appliance 34	
	Included in delivery	34
	Assembly and components	34
	Controls	35
	Accessories	36
	Before using for the first time .	36
	Installing and connecting the appliance	36
	Commissioning the appliance	36
	Operating the appliance	38
	Preparing coffee using freshly ground beans	38
	Preparing drinks with milk	38
	Adjusting beverage settings	39
	Water filter	41
	Frost protection	41
	Settings	42
	Automatic switch-off	42
	Switching the audible signal on/off . .	42
	Setting the water hardness	42
	Factory reset	43
	Daily care and cleaning	44
	Cleaning agent	44
	Cleaning the appliance	44
	Cleaning the drip tray and coffee grounds container	45
	Cleaning the milk system	45
	Cleaning the brewing unit	45
	Service programme	46
	Starting Calc'nClean	47
	Trouble shooting	48
	Customer service	52
	Technical data	52
	E number and FD number	52
	Guarantee	52



Intended use

Check the appliance for damage after unpacking it. Do not connect the appliance if it has been damaged in transport.

This appliance is intended for domestic use only.

Only use the appliance indoors at room temperature and up to 2000 m above sea level.



Important safety information

Please read carefully, follow and retain the operating instructions. When passing on the appliance, enclose these instructions.

This appliance can be used by children aged from 8 years and above and by persons with reduced physical, sensory or mental capabilities or lack of experience and knowledge if they have been given supervision or instruction concerning use of the appliance in a safe way and if they understand the hazards involved. Keep children under 8 years of age away from the appliance and connecting cable and do not allow them to use the appliance. Children shall not play with the appliance. Cleaning and user maintenance shall not be made by children unless they are older than 8 years and supervised.

⚠ Warning**Danger of electric shock!**

- The appliance may only be connected to a power supply with alternating current via a correctly installed socket with earthing. Ensure that the protective conductor system of the domestic electricity supply has been correctly installed.
- Connect and operate the appliance only in accordance with the specifications on the rating plate. If the power cord of this appliance is damaged, it must be replaced by customer service.
- Do not use if the power cable or appliance is damaged. If a fault occurs, pull the mains plug or switch off the mains voltage immediately.
- To prevent hazards, the appliance may be repaired by our customer service only.
- Never immerse the appliance or mains cord in water.
- The plug and socket connection of the appliance must not come into contact with liquids.
- Please note the special information on cleaning in the instructions.

⚠ Warning**Hazard due to magnetism!**

The appliance contains permanent magnets which may affect electronic implants, e.g. heart pacemakers or insulin pumps. Persons with electronic implants should keep a minimum distance of 10 cm from the appliance and the water tank when removed.

⚠ Warning**Risk of suffocation!**

Do not let children play with packaging material. Store small parts safely as they can be easily swallowed.

⚠ Warning**Risk of burns!**

- The milk system becomes very hot. After use, allow it to cool down first before touching it.
- After use, surfaces may still be hot for a certain period.
- Freshly prepared beverages are very hot. Leave to cool a little if necessary.

Warning **Risk of injury!**

- Improper use of this appliance may result in injury.
- Do not reach into the grinding unit.

Warning **Fire hazard!**

- The appliance will become hot.
- Never operate the appliance in a cupboard.



Environmental protection

Saving energy

- If the appliance is not being used, switch it off.
- Set the interval for automatic switch-off to the smallest value.
- If possible, do not interrupt coffee or milk froth dispensing. Stopping a process prematurely results in higher energy consumption and the drip tray fills up more quickly.
- Descale the appliance regularly to avoid a build-up of limescale. Limescale residue results in higher energy consumption.

Environmentally-friendly disposal

Dispose of packaging in an environmentally-friendly manner.



This appliance is labelled in accordance with European Directive 2012/19/EU concerning used electrical and electronic appliances (waste electrical and electronic equipment - WEEE). The guideline determines the framework for the return and recycling of used appliances as applicable throughout the EU.

Please ask your dealer about current disposal routes.

Getting to know your appliance

This section provides an overview of the scope of delivery, the assembly and the components of your appliance. It also introduces you to the different controls.

Note: Depending on the appliance model, individual details and colours may differ.

How to use these instructions:

The cover pages of the operating instructions can be folded out towards the front. The illustrations are identified using numbers that are referred to in the operating instructions.

Example: → Fig. **1**

Included in delivery

→ Fig. **1**


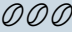
- A Fully automatic coffee machine
- B Water hardness testing strip
- C Instruction manual
- D Milk frother




Assembly and components

→ Fig. **2**

- 1 On / off button (stand-by mode)
- 2 Control panel
- 3 Handle of milk frother
- 4 Outlet system for coffee, height adjustable
- 5 Milk frother (holder, frother, cover), height adjustable
- 6 Drip tray (coffee grounds container, drip grate, drip plate, float)
- 7 Door of brewing chamber
- 8 Rating plate
- 9 Brewing unit
- 10 Aroma lid
- 11 Bean container
- 12 Rotary selector for setting grinding level
- 13 Cover for water tank
- 14 Water tank

Controls

Button	Meaning
	<p>Switch the appliance on and off The appliance rinses automatically when it is switched on and off. The appliance is not rinsed if:</p> <ul style="list-style-type: none"> ■ it is still warm when switched on, or ■ coffee was not dispensed before the appliance was switched off. <p>The appliance is ready for use when the LEDs of the buttons for selecting drinks light up in the control panel. The appliance has automatic switch-off. → <i>"Selecting automatic switch-off" on page 42</i></p>
espresso	Dispensing Espresso
caffe crema	Dispensing Caffe crema
cappuccino	Dispensing cappuccino
latte macchiato	Dispensing latte macchiato
milk	Frothing up milk
	<p>Coffee strength Adjusting the coffee strength → <i>"Adjusting beverage settings" on page 39</i></p>
calc'nClean	<p>Start the service programme Flashes when the service programme needs to be performed. → <i>"Calc'nClean service programme" on page 47</i></p>

Symbol	Meaning
	<p>Lights up when the water tank needs to be topped up with water or the water tank is not inserted. Flashes when the water filter needs to be replaced.</p>
	<p>Lights up when trays need to be emptied. Flashes when door of brewing chamber is open.</p>
	espresso
is continuously lit	Ready to use, selection possible
is pulsing	Dispensing underway
is flashing	Waiting for operation, e.g. with calc'nClean
off	Not available

Accessories

The following accessories are available from retailers or from customer service:

Accessory	Order number	
	Retail	Customer service
Cleaning tablets	TZ80001A	00312097
	TZ80001B	00312098
Descaling tablets	TZ80002A	00312094
	TZ80002B	00312095
Water filter	TZ70003	00575491
Care set	TZ80004A	00312105
	TZ80004B	00312106

The contact data for customer service in all countries can be found at the back of these instructions.

Before using for the first time

In this section, you will learn how to commission your appliance.

Note: Only use the appliance in frost-free areas. If the appliance was transported or stored at temperatures below 0 °C, you must wait for at least 3 hours before using it.

Installing and connecting the appliance

1. Remove any protective plastic film.
2. Place the appliance on a level, water-resistant surface which can bear the weight.
3. Using the mains plug, connect the appliance to an earthed socket that has been correctly installed.

Note: After plugging in, always wait (approx. 5 seconds).

Commissioning the appliance

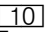
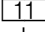
Attaching milk frother

→ Fig. **3**

1. Remove milk frother parts from the bag.
2. Assemble milk frother.
3. Attach the milk frother on the front of the appliance.

Filling the bean container

This appliance can be used to make coffee drinks from coffee beans.

1. Open the lid  of the bean container .
2. Add coffee beans.
3. Close the lid again.

Notes

- Coffee beans that have been glazed, caramelised or treated with other sugary additives will block the brewing unit. Only use pure, roasted bean mixes that are suitable for use in espresso or fully automatic coffee machines.
- The coffee beans are freshly ground for each brewing operation.
- Store coffee beans in a sealed container in a cool place to ensure optimum quality.
- Coffee beans can be stored in the bean container for a number of days without losing their aroma.

Filling the water tank

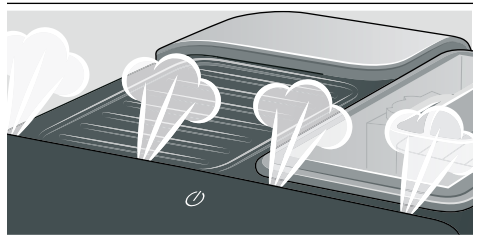
Important: Fill the water tank with fresh, cold, still water on a daily basis. Prior to operation, check whether the water tank has been sufficiently filled.

1. Carefully remove the cover of the water tank.
2. Use the handle to remove the water tank and then rinse out.
3. Fill the water tank with water up to the "max" marking.
4. Put the water tank back in the holder again, keeping it straight, and fit the cover of the water tank.

General information

The factory settings of the fully automatic coffee machine are programmed for optimal performance.

- The appliance switches off automatically after a specific time.
- When switched off, the appliance will emit steam into the tray for cleaning purposes.
- Whenever a button is pressed, a signal sounds. It can be switched off. → *"Settings" on page 42*
- When the appliance is used for the first time, after running a service programme or has not been operated for a long period, the first beverage will not have the full aroma and should not be consumed.
- After commissioning the appliance, you will only achieve a suitably thick and stable "crema" after the first few cups have been dispensed.
- If the appliance is in use for a long period of time, water droplets will form on the ventilation slots. This is normal.
- Escaping steam is not a fault but due to the design of the machine.



Before using your new appliance, you should check and select the water hardness. → *"Settings" on page 42*

Operating the appliance

In this section, you will learn how to make beverages with coffee and milk. It contains information about settings, water filters and adjustment of the grinding level, in addition to frost protection.

Note: Freshly prepared beverages may be very hot.

Preparing coffee using freshly ground beans

You can choose between Espresso and Caffè crema. → "Preparing drinks with milk" on page 38

The appliance is switched on. The water tank and bean container have been filled.

1. Place a cup under the outlet system.
2. Touch **000** repeatedly to select the required coffee strength.
3. Touch the **espresso** or **caffè crema** button.

The coffee is brewed and then dispensed into the cup.

Note: To stop dispensing the drink before the end, touch **espresso** or **caffè crema** again.

Preparing drinks with milk

This appliance has a milk frother. You can make drinks of coffee with milk or froth up milk.

Tip: You can also use plant-based alternatives to milk, e.g. soya milk.

Notes

- The quality of the milk froth depends on the type of milk or the plant-based alternative used.
- Dried milk residues are difficult to remove so always perform cleaning. → Fig. 6 III → "Daily care and cleaning" on page 44

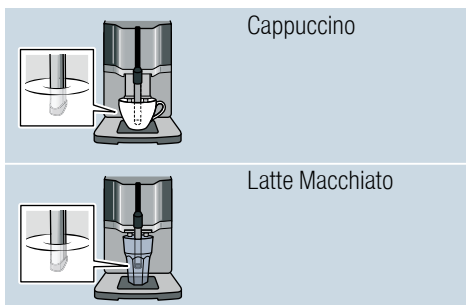
Warning

Risk of burns!

The milk frother gets very hot. Hold only by the handle. After use, let it cool down first before touching it.

Coffee drinks with milk

You can choose between cappuccino and latte macchiato. When doing so, please check the position of the coffee dispenser and milk frother.



The appliance is switched on. The water tank and bean container have been filled.

The milk frother is installed.

1. Fill a large cup or a large glass with approx. 100 ml milk for cappuccino and approx. 150 ml milk for latte macchiato.
2. Place a cup or a glass under the outlet system.
3. Push the coffee dispenser and milk frother right down.
4. Touch **000** repeatedly to select the required coffee strength.
5. Touch the **cappuccino** or **latte macchiato** button.

The milk is first frothed up in the cup or glass. The coffee is then brewed and dispensed into the cup or glass.

Note: To stop current dispensing of the drink before the end, touch **cappuccino** or **latte macchiato** again.

Frothing up milk

The appliance is switched on. The water tank has been filled.

The milk frother is installed.

1. Fill a large cup or a large glass with approx. 100 ml milk.
2. Place a cup or a glass under the outlet system.
3. Push the coffee dispenser and milk frother right down.
4. Touch the **milk** button.
The milk is frothed up.


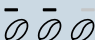
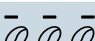
Note: To stop the process before the end, touch **milk** again.

Adjusting beverage settings

Coffee strength

Before making a drink, you can adjust the coffee strength:

To do so, touch **000** to select the strength you require.

	mild
	regular
	strong

Note: The coffee strength selected is then active for all drinks made with coffee.

Filling level

You can adjust the filling level of your drinks.

Press and hold **espresso** or **caffe crema** for 3 seconds.

Dispensing takes place, with the button selected flashing.

Once the required filling level is reached in the cup, touch the button selected to stop. The new filling level is only apparent after the next drink is dispensed.

Note: The filling level can be selected either for Espresso (25 - 60 ml) or Caffe crema (80 - 200 ml). A minimum quantity is always brewed: Espresso approx. 25 ml and Caffe crema approx. 80 ml.

Frothing time

You can adjust the frothing time of your drinks.

Press and hold **cappuccino**, **latte macchiato** or **milk** for 3 seconds.

The milk is frothed up, and the button selected flashes.

Once the required frothing time is reached, touch the button selected to stop.

Note: Setting the frothing time has no impact on the amount of coffee.

Setting the grinding level

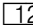
This appliance features an adjustable grinder. This enables the grinding level of the coffee to be individually changed.

Warning **Risk of injury!**

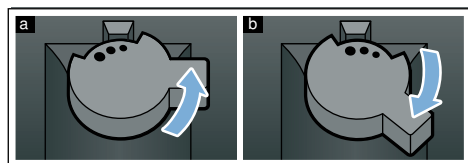
Do not reach into the grinding unit.

Caution!

The appliance may be damaged! Only adjust the grinding level when the grinder is running!

When the grinder is in operation, use the rotary selector  to set the grinding level.

- Finer grinding level: turn anticlockwise. (Fig. a)
- Coarser grinding level: turn clockwise. (Fig. b)




Notes

- The new setting will not become apparent until after the second cup of coffee.
- Set a finer grinding level with dark-roasted coffee beans and a coarser grinding level with lighter coffee beans.

Water filter

→ Fig. 7

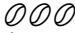
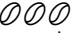
A water filter lessens limescale deposits and reduces impurities in the water. The appliance also does not need to be descaled so often. Water filters are available from retailers or from customer service.

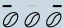
If a water filter is inserted, the appliance will show when this needs to be changed. The  symbol is flashing.

Inserting or replacing a water filter

A new water filter must be rinsed before it can be used.

The appliance is switched on. The water tank has been filled.

1. Simultaneously hold down  and **calc'nClean** for at least 3 seconds.
2. Touch **espresso** button, and "W. hardness" will be activated.
3. Touch  button and make the following selection:

 with water filter

4. Immerse the water filter (opening facing up) in a container filled with water until no more air bubbles rise to the surface.
→ Fig. 7
5. Then press the water filter firmly into the empty water tank.
6. Fill the water tank with water up to the "max" marking.
7. Place a container with a capacity of 1.0 litre under the outlet.
8. Touch **espresso** button to save the setting and activate rinsing.
9. Insert water tank.
10. Touch **espresso** button to save the setting and start rinsing. Water will now flow through the filter.
11. Touch **calc'nClean** button to exit the menu.
12. Then empty the container. The appliance is ready for use again.



Removing the water filter

If the water filter has been removed and no new one inserted, please select the appropriate water hardness. → "Setting the water hardness" on page 42

Frost protection

To prevent frost damage during transportation and storage, the appliance must be completely emptied beforehand.

Info: The appliance must be ready for use and the water tank filled.

1. Place a large container under the outlet of the milk frother and push the frother down.
2. Press and hold **milk** button for at least 5 seconds.
The LED in the button flashes, and the appliance now heats up.
3. As soon as steam escapes from the milk frother, remove the water tank.
4. Allow the appliance to cool down.
Wait until  symbol and all LEDs are flashing.
5. Use  button to switch the appliance off.
6. Empty the water tank and the drip tray and thoroughly clean the appliance.

The appliance can now be transported or stored.

Note: The brewing unit is now secured and cannot be removed.

Settings

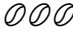

This appliance has different factory settings. You can customise the settings on the appliance.

Note: If no button is pressed within 90 seconds, the appliance switches to "Choose beverage" without saving. The previous setting remains unchanged.

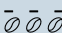
You can select the following settings:

Automatic switch-off

The appliance switches off automatically at a specific time after the last button was pressed. This time can be selected, with settings from 15 minutes to 4 hours possible here.

1. Simultaneously hold down  and **calc'nClean** for at least 3 seconds.
2. Touch **caffè crema** button and "Automatic switch-off" will be activated.
3. Touch  button and select the required time.

The following settings are possible:

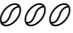
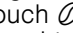
	15 minutes
	30 minutes (factory setting)
	1 hour
	2 hours
	4 hours

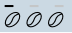
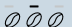
4. Touch **caffè crema** button to save the setting.
5. Touch **calc'nClean** button to exit the menu.

Switching the audible signal on/off

Whenever a button is pressed, an audible signal sounds.

This can be switched on or off.

1. Simultaneously hold down  and **calc'nClean** for at least 3 seconds.
2. Touch **cappuccino** button, and "Signal tone" menu will be activated.
3. Touch  button and switch signal tone on or off.

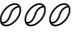
	On (factory setting)
	Off

4. Touch **cappuccino** button to save the setting.
5. Touch **calc'nClean** button to exit the menu.

Setting the water hardness

It is important to set the water hardness correctly so that the appliance indicates in good time when the descaling programme should be run. The preset water hardness is level 4.

You can check the water hardness using the enclosed test strip or by asking your local water supplier.

1. Briefly immerse the enclosed test strip in fresh tap water, leave it to drip and read off the result after 1 minute.
2. Simultaneously hold down  and **calc'nClean** for at least 3 seconds.
3. Touch **espresso** button, and "W. hardness" menu will be activated.

4. Touch **000** button and select the water hardness.
The following settings are possible:

000	W. hardness 1
000	W. hardness 2
000	W. hardness 3
000	W. hardness 4 (factory setting)
000	Water filter (when used)
000	H2O-softener (if available)

5. Touch **espresso** button to save the setting.
6. Touch **calc'nClean** button to exit the menu.

The table shows the allocation of the levels to the different degrees of water hardness:

Setting	Degree of water hardness	
	German (°dH)	French (°fH)
1	1-7	1-13
2	8-14	14-25
3	15-21	26-38
4	22-30	39-54

Subsequent changes to the water hardness can be made at any time.

Note: When using the water filter (see section "Accessories"), proceed as follows. → *"Water filter" on page 41*

Factory reset

If you set the appliance back to the factory settings, you will lose your own settings.

1. Simultaneously hold down **000** and **calc'nClean** for at least 3 seconds.
2. Touch **latte macchiato** button. The factory settings are reactivated.
3. Touch **calc'nClean** button to exit the menu.

Daily care and cleaning

With good care and cleaning, your appliance will remain fully functioning for a long time to come. In this section, you will learn how to correctly clean and care for your appliance.

Warning

Risk of electric shock!

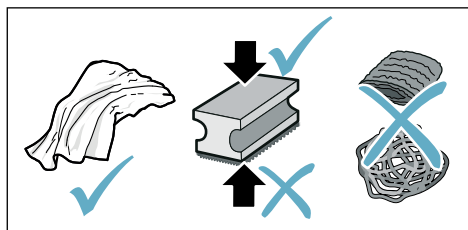
Before cleaning the appliance, pull out the mains plug. Never immerse the appliance in water. Do not use a steam cleaner.

Cleaning agent

Please observe the following information to ensure that the different surfaces are not damaged by using the wrong type of cleaning agent.

Do not use:

- Harsh or abrasive cleaning agents.
- Any cleaning agents containing alcohol or spirits.
- Hard scouring pads or sponges.



Notes

- New sponge cloths may contain salts. Salts can cause rust film on stainless steel. Wash new sponge cloths thoroughly before use.
- Always remove any limescale, residues of coffee or milk, cleaning or descaling solution immediately. This residue may cause corrosion.

Caution!

Not all of the appliance's components can be cleaned in the dishwasher.

→ Fig. 5 - 7

Not dishwasher-safe:



Water tank
Cover for water tank
Aroma lid
Brewing unit
Drip tray

Dishwasher-safe:



max.
60°C

Drip plate
Drip grate
Coffee grounds container
Float
Milk frother
Cover for milk frother

Cleaning the appliance

1. Wipe down the outside of the appliance with a soft, damp cloth.
2. Clean the control panel using a micro-fibre cloth.
3. Wipe down the coffee dispenser if required after dispensing each beverage.

Notes

- If the appliance is cold when switched on or if it is switched off after dispensing coffee, it rinses automatically. The system is therefore self-cleaning.
- If the appliance has not been used for a long period of time (e.g. while you are on holiday), clean the entire appliance thoroughly, including the milk frother, trays and brewing unit.

Cleaning the drip tray and coffee grounds container

→ Fig. 5

Note: The drip tray and coffee grounds container should be emptied and cleaned every day in order to prevent deposits. With frequent use also empty from time to time as soon as the float is clearly visible if or the relevant symbol lights up.

1. Open the door.
2. Pull the drip tray with the coffee grounds container forwards and out.
3. Remove the drip plate with grate.
4. Empty and clean the drip tray and coffee grounds container.
5. Wipe out the inside of the appliance (area of drip tray).

Cleaning the milk system

Clean the milk system after each use to remove residues and ensure the function.

Warning

Risk of burns!

The milk frother gets very hot. Hold only by the handle. After use, let it cool down first before touching it.

1. Fill a glass half-full with water and place under the outlet system.
2. Push the milk frother right down.
3. Touch the **milk** button to clean the milk system.
4. Push the milk frother right up and allow it to cool down.
5. Dismantle the milk frother into its individual parts and clean thoroughly.
→ Fig. 6
6. Dry the individual parts, reassemble and fit back onto the appliance.

Notes

- To stop the process before the end, touch **milk** again.
- All parts of the milk system should be cleaned in the dishwasher. Detergent residues in the milk system must be thoroughly removed following the rinsing process.

Cleaning the brewing unit

→ Fig. 4, → Fig. 5

In addition to automatic cleaning, the brewing unit should be removed regularly for cleaning.

Caution!

Clean the brewing unit without detergent or products containing vinegar or acid and do not place in the dishwasher.

Remove the brewing unit:

1. Switch off the appliance.
2. Open the door to the brewing chamber.
3. Remove the coffee grounds container.
4. Push the red lever up, grasp the brewing unit by the handle and pull forwards carefully.
5. Rinse the brewing unit thoroughly under warm, running water.
6. Clean the interior of the appliance thoroughly with a damp cloth, removing any coffee residues.
7. Allow the brewing unit and the interior of the appliance to dry.

Insert the brewing unit:

1. Hold the brewing unit only by the handle.
2. Push the red lever up, position the brewing unit underneath and slide back as far as it will go. The lever must snap into place.
3. Insert the coffee grounds container again and close the door.

Important: If the brewing unit has not been inserted, or the brewing unit or drip tray not inserted correctly, it will not be possible to close the door.


Service programme

The **calc'nClean** button will light up every so often, with the exact frequency depending on the water hardness and usage of the appliance.

The appliance should be immediately cleaned and descaled using the programme.

Notes

- **Important:** If the appliance is not cleaned and descaled in good time, it may be damaged.
- **Caution!** For each of the service programmes, use Calc'nClean descaling and cleaning agents as described in the instructions and observe the (relevant) safety information.
- Do not drink the liquids.
- Never use citric acid, vinegar or any vinegar-based agents to descale the appliance.
- For cleaning and descaling, only use the tablets intended for such purposes. They have been specially developed for this appliance, and new stocks can be ordered through customer service. → "Accessories" on page 36
- Do not use descaling agent with phosphoric acid.
- Never insert descaling tablets or other products into the brewing unit.
- Never interrupt the service programme.
- Prior to starting a service programme, remove, clean and re-insert the brewing unit. Clean the milk frother.
- At the end of a service programme, wipe down the appliance using a soft, damp cloth to immediately remove any descaler residue. This residue may cause corrosion.

- New sponge cloths may contain salts. Salts can cause rust film on stainless steel, so cloths must always be washed out thoroughly before use.
- Using a water filter increases the intervals until a service programme needs to be performed.
- If the service programme is interrupted, e.g. by a power failure,  and **calc'nClean** will light up.

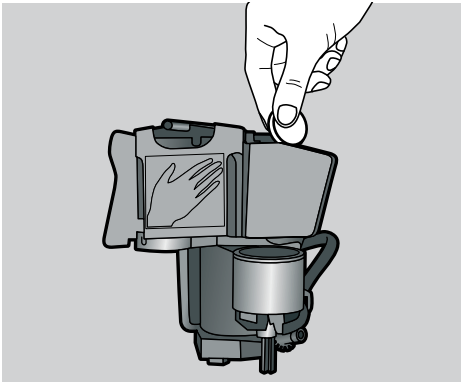
Then proceed as follows:

1. Rinse out the water tank.
2. Pour in fresh, still water up to the "max" marking.
3. Touch the **calc'nClean** button. The programme starts and rinses the appliance. Duration: approx. 2 minutes.
4. Empty, clean and re-insert the drip tray. Close the door. The programme has finished. The appliance is ready for use again.

Starting Calc'nClean

Duration: approx. 40 minutes

1. Press and hold the **calc'nClean** button for approx. 5 seconds.
☞ symbol lights up.
2. Open the door, remove the drip tray and coffee grounds container and empty.
3. Remove and clean the brewing unit.
4. Place a Siemens cleaning tablet in the brewing unit and re-insert the unit.



5. Re-insert the drip tray and coffee grounds container and close the door.
☞ symbol lights up.
6. Remove the water filter (if there is one).
7. Pour 0.5 litres of lukewarm water into the empty water tank up to the mark and dissolve a Siemens descaling tablet in it.
8. Re-insert the water tank and place a large container (approx. 1 litre) under the outlet system.
9. **calc'nClean** flashes, touch **calc'nClean**.

The programme starts, cleans and descales the appliance. **calc'nClean** pulses. Duration approx. 20 minutes.

- ☞ symbol lights up.
10. Empty the container, open the door, empty the drip tray and re-insert.

11. Close the door and place a container under the outlet system.
☞ symbol lights up.
12. Clean the water tank and replace the water filter (if removed).
→ Fig. 7
13. Fill with fresh, still water up to the "max" mark. Place the container under the outlet system again.
14. **calc'nClean** flashes, touch **calc'nClean**.

The programme starts and then cleans and rinses the appliance. **calc'nClean** pulses.

- ☞ symbol lights up.
15. Empty, clean and re-insert the drip tray and coffee grounds container.
The programme has finished. The appliance is ready for use again.

Trouble shooting




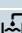

Faults often have simple explanations. Before calling the customer service, please refer to the fault table and attempt to correct the fault yourself.




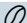


Please read through the safety information at the beginning of these instructions.

Fault table

Problem	Cause	Solution
The appliance no longer responds.	Fault in the appliance.	Pull out the mains plug, wait 10 seconds, plug back in.
Coffee or milk froth quality varies considerably.	Build-up of limescale in the appliance.	Descale the appliance in accordance with the instructions.
The individually selected per-cup quantity is not reached. Coffee dispensing slows to a trickle or stops completely	The grinding level is too fine.	Set a coarser grinding level.
	Heavy build-up of limescale in the appliance.	Descale the appliance as described in the instructions.
	Air in the water filter.	Immerse the water filter in water until no more air bubbles escape; insert the filter again.
	The appliance is soiled.	Clean the brewing unit or run the "Calc'nClean" service programme.
No milk froth is produced. / The quality of the milk froth varies.	Residues of descaling agent are blocking the water tank.	Clean the water tank thoroughly.
	The coffee strength is set too high.	Reduce the coffee strength.
	The quality of the milk froth depends on the type of milk or the plant-based alternative used.	Optimise the result by selecting your milk or plant-based alternative as appropriate.
	The milk frother is soiled. The milk frother is not inserted in the milk.	Clean the milk frother in the dishwasher. Use more milk, check whether the milk frother is inserted in the milk. Slide the outlet system right down.
	Heavy build-up of limescale in the appliance.	Descale the appliance as described in the instructions.

No coffee dispensed, only water.	An empty bean container is not detected by the appliance.	Add coffee beans Note: The appliance will adjust to the coffee beans on the next dispensing process.
	The coffee shaft on the brewing unit is blocked.	Clean the brewing unit. → <i>"Cleaning the brewing unit" on page 45</i>
	Beans are not falling into the grinding unit (beans too oily).	Gently tap the bean container. Possibly change the type of coffee. When the bean container is empty, wipe it with a dry cloth.
	The brewing unit is not inserted properly.	Slide the brewing unit right back.
Coffee has no "crema".	Unsuitable type of coffee.	Use a type of coffee with a higher proportion of robusta beans.
	The beans are no longer freshly roasted.	Use fresh beans.
	The grinding level is not suitable for the coffee beans.	Set a finer grinding level.
The coffee is too "acidic".	Grinding level set too coarse.	Set a finer grinding level.
	Unsuitable type of coffee.	Use a darker roast.
The coffee is too "bitter".	Coffee is ground too fine.	Set a coarser grinding level.
	Unsuitable type of coffee.	Change the type of coffee.
The coffee tastes "burnt".	Coffee is ground too fine.	Set a coarser grinding level.
	Unsuitable type of coffee.	Change the type of coffee.
Milk/blended milk drinks too hot. Milk froth too thin, loud sucking noise.	Too little milk in glass or cup.	Use more milk or adjust frothing time.
	Too much milk in glass or cup.	Use less milk or adjust frothing time.
Milk/blended milk drinks too cold.	Milk in the glass or cup is too cold.	Use lukewarm milk.
	Air in the water filter.	Immerse the water filter in water until no more air bubbles escape; insert the filter again. Firmly press the water filter straight down into the tank connection.
The appliance is not dispensing drinks.	Air in the water filter.	Immerse the water filter in water until no more air bubbles escape; insert the filter again. Firmly press the water filter straight down into the tank connection.
Several buttons flashing, a loud noise can be heard.	Water tank missing or wrongly inserted.	Insert water tank correctly.
Water dripped onto the inner floor of the appliance when the drip tray was removed.	Drip tray removed too early.	Wait a few seconds after the last drink was dispensed before removing the drip tray.

The brewing unit cannot be removed.	The brewing unit is not in the removal position (e.g. frost protection activated).	Switch the appliance on again.
The appliance cannot be operated, LEDs lit up or flashing.	The appliance is in demo mode.	Hold  button for at least 5 seconds to deactivate demo mode. Remove the water tank, fill with fresh water and re-insert.
The grinder will not start.	The appliance is too hot.	Disconnect the appliance from the mains and leave to cool down for 1 hour.
 LED flashes.	The door is not closed properly.	Press the door firmly closed.
	The appliance is too hot.	Disconnect the appliance from the mains and leave to cool down for 1 hour.
 LED lit up despite empty drip tray - what to do?	Emptying is not detected when the appliance is off.	When the appliance is switched on, remove and re-insert the drip tray.
 LED lit up despite water tank being full.	Water tank wrongly inserted.	Insert water tank correctly.
	Carbonated water in the water tank.	Fill the water tank with fresh tap water.
	Floater is stuck in the water tank.	Remove the water tank and clean thoroughly.
	New water filter not rinsed according to the instructions.	Rinse the water filter according to the instructions and then switch on.
	Air in the water filter.	Immerse the water filter (opening up) in water until no more air bubbles escape; insert the filter again. → <i>"Inserting or replacing a water filter" on page 41</i>
	Water filter is old.	Insert a new water filter.
	Limescale deposits in the water tank can block up the system.	Thoroughly clean the water tank and start calc'nClean. → <i>"Calc'nClean service programme" on page 47</i>
 LED flashes and all beverage LEDs flashing.	Water tank is missing or not inserted correctly.	Insert water tank correctly.
	The pipe system in the appliance is dry.	Insert water tank correctly. Fill the water tank with fresh tap water. Do not fill with carbonated water.
	Air in the water filter.	Immerse the water filter (opening up) in water until no more air bubbles escape; insert the filter again. → <i>"Inserting or replacing a water filter" on page 41</i>

All LEDs flashing.	Incorrect voltage in building.	Only operate the appliance at 220V-240V.
 ,  and calc'nClean LEDs flashing.	The ambient temperature is too cold.	Operate the appliance at temperatures > 5 °C.
 and  LEDs flashing.	Brewing unit very heavily soiled or brewing unit cannot be removed.	Clean brewing unit if possible and switch appliance off and back on again.
 LEDs flashing.	Fault in the appliance.	Restart appliance.
calc'nClean and  light up.	The descaling process has been interrupted.	Continue the descaling process. → "Service programme" on page 46
Display "calc'nClean" keeps on appearing.	The water is too hard.	Insert water filter and activate according to the instructions. → "Water filter" on page 41

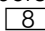

If you are unable to solve the problem, always call the hotline.
 You will find the telephone numbers at the back of these instructions

Customer service

Technical data

Electrical connection (voltage – frequency)	220–240 V ~, 50/60 Hz
Power rating	1300 W
Maximum static pump pressure	15 bar
Maximum capacity of water tank (without filter)	1.3 l
Maximum capacity of bean container	≈ 250 g
Length of power cable	100 cm
Dimensions (H x W x D)	38.3 x 25.1 x 43.3 cm
Weight, empty	approx. 8–9 kg
Type of grinding unit	Ceramic/steel


E number and FD number

When calling us, please give the full product number (E no.) and the production number (FD no.) so that we can provide you with the correct advice. These numbers can be found on the rating plate . (→ Fig. )

To save time, you can make a note of the data for your appliance and the telephone number for customer service here, should this be required.

E no.

**FD
Number**

Customer service 

The contact data for customer service in all countries can be found at the back of these instructions.

Guarantee

The guarantee conditions for this appliance are as defined by our representative in the country in which it is sold. Details regarding these conditions can be obtained from the dealer from whom the appliance was purchased. The bill of sale or receipt must be produced when making any claim under the terms of this guarantee. Changes reserved.

Beratung bei Störungen • Advice on troubleshooting • Conseils sur les problèmes •
 Consejos sobre problemas de • Consulenza su problemi

Service-Hotlines

www.siemens-home.bsh-group.com

AE 04 803 0501	LI 05 274 1788
AL 066 206 47 94	LU 26 349 300
AT 0810 550 522	LV 067 425 232
AU 1300 368 339	ME 050 432 575
BA 033 213 513	MK 02 2454 600
BE 070 222 142	NL 088 424 4020
BG 02 931 50 62	NO 22 66 06 00
CH 043 455 4095	PL 801 191 534
CN 400 889 9999 Call rates depend on the network used	PT 21 4250 720
CZ 0251 095 546	RO 021 203 9748
DE 0911 70 440 044	RU 8 800 200 29 62
DK 44 89 89 85	SE 0771 11 22 77 (local rate)
EE 0627 8730	SK 02 444 520 41
ES 902 11 88 21	SL 01 200 70 17
FI 020 7510 700 Lankapuhelimesta 8,28 snt/puhelu + 7 snt/min (alv 24%) Matkapuhelimesta 8,28 snt/puhelu + 17 snt/min (alv 24%)	TR 444 6688 Çağrı merkezini sabit hatlardan aramanın bedeli şehir içi ücretlendirime, Cep telefonlarından ise kullanılan tarifeye göre değişkenlik göstermektedir
FR 0140 10 1200	US 866 447 4363 (toll free)
GB 0344 892 8999 Calls charged at local or mobile rate	XK 044 172 309
GR 18 182 (Αστική χρέωση)	XS 011 21 39 552
HR 01 3028 226	
HU 0036 1 489 5461	
IE 01450 2655 0.03 € per minute at peak. Off peak 0.0088 € per minute.	
IL 08 9777 222	
IS 0520 3000	
IT 800 018 346 (Line Verde)	

BSH group is a Trademark Licensee of Siemens AG. Manufacturer´s Service for Siemens Home Appliances.

DE Deutschland, Germany
 BSH Hausgeräte Service GmbH
 Zentralwerkstatt für kleine Hausgeräte
 Trautskirchener Strasse 6-8
 90431 Nürnberg
 Online Auftragsstatus, Pickup Service
 für Kaffeevollautomaten und viele
 weitere Infos unter:
www.siemens-home.bsh-group.de
 Reparaturservice, Ersatzteile &
 Zubehör, Produkt-Informationen:
 Tel.: 0911 70 440 044
<mailto:cp-servicecenter@bshg.com>

AE United Arab Emirates,
 الإمارات العربية المتحدة
 BSH Home Appliances FZE
 Round About 13, Plot Nr MO-0532A
 Jebel Ali Free Zone - Dubai
 Tel.: 04 881 44 01*
<mailto:service.uae@bshg.com>
www.siemens-home.bsh-group.com/me
 * Sun-Thu: 8.00 am to 5.00 pm
 (exclude public holidays)

AT Österreich, Austria
 BSH Hausgeräte Gesellschaft mbH
 Werkskundendienst für Hausgeräte
 Quellenstrasse 2a
 1100 Wien
 Online Reparaturannahme,
 Ersatzteile und Zubehör und
 viele weitere Infos unter:
www.siemens-home.bsh-group.at
 Reparaturservice, Ersatzteile &
 Zubehör, Produktinformationen
 Tel.: 0810 550 522
<mailto:vie-stoerungsannahme@bshg.com>
 Wir sind an 365 Tagen rund um die Uhr für
 Sie erreichbar.

AU Australia
 BSH Home Appliances Pty. Ltd.
 Gate 1, 1555 Centre Road
 Clayton, Victoria 3168
 Tel.: 1300 167 425*
mailto:customersupport.au@bshg.com
www.siemens-home.bsh-group.com/au
 * Mo-Fr: 24 hours

BE Belgique, België, Belgium
 BSH Home Appliances S.A. – N.V.
 Avenue du Laerbeek 74
 Laarbeeklaan 74
 1090 Bruxelles – Brussel
 Tel.: 02 475 70 02
mailto:bru-repairs@bshg.com
www.siemens-home.bsh-group.com/be

BH Bahrain, البحرين
 Bahrain Gas WLL
 Bldg 725 / Road 117 / Block 701
 Sheikh Salman Highway,
 Tubli-701; Bahrain
 Manama
 Tel.: 01 753 11 11
mailto:info@bahraingas.bh
 * Sun-Thu: 8.00 am to 6.00 pm
 (exclude public holidays)

BY Belarus, Беларусь
 ООО "БСХ Бытовая техника"
 тел.: 495 737 2962
mailto:mok-kdhl@bshg.com

**CH Schweiz, Suisse,
 Svizzera, Switzerland**
 BSH Hausgeräte AG
 Siemens Hausgeräte Service
 Fahrweidstrasse 80
 8954 Geroldswil
 Reparaturservice, Ersatzteile &
 Zubehör, Produktinformationen
 Tel.: 0848 888 500
mailto:ch-service@bshg.com
mailto:ch-spareparts@bshg.com
www.siemens-home.bsh-group.com/ch

CY Cyprus, Κύπρος
 BSH Ikiakes Syskeves-Service
 39, Arh. Makaanriou III Str.
 2407 Egomi/Nikosia (Lefkosia)
 Tel.: 777 78 007
 Fax: 022 65 8128
mailto:EGO-CYCustomerService@bshg.com

**CZ Česká Republika,
 Czech Republic**
 Více informací (např. záruční
 podmínky, prodloužená záruka aj.)
 naleznete na webových stránkách
www.siemens-home.bsh-group.com/cz/
 nebo nás kontaktujte na +420 251 095 511
 BSH domácí spotřebiče s.r.o.
 Radlická 350/107c
 158 00 Praha 5
 Přijem oprav
 Tel.: +420 251 095 042
mailto:opravy@bshg.com

DK Danmark, Denmark
 BSH Hvidevarer A/S
 Telegrafvej 4
 2750 Ballerup
 Tel.: 44 89 80 28
[BSH-Service.dk@bshg.com](mailto:mailto:BSH-Service.dk@bshg.com)
www.siemens-home.bsh-group.com/dk


ES España, Spain
 En caso de avería puede ponerse
 en contacto con nosotros, su aparato
 será trasladado a nuestro taller
 especializado de cafeteras.
 Electrodomésticos España S.A.
 Servicio Oficial del Fabricante
 Parque Empresarial PLAZA,
 C/ Manfredonia, 6
 50197 Zaragoza
 Tel.: 976 305 714
mailto:CAU-Siemens@bshg.com
www.siemens-home.bsh-group.es

FI Suomi, Finland


BSH Kodinkoneet Oy
Itälähdenkatu 18 A
PL 123
00201 Helsinki
Tel.: 0207 510 715
mailto:Siemens-Service-FI@bshg.com
www.siemens-home.bsh-group.com/fi
Soittajahinta on kiinteästä verkosta ja
matkapuhelimesta 8,35 snt/puh + 16,69 snt/min.

FR France

BSH Electroménager S.A.S.
50 rue Ardoin – CS 50037
93406 SAINT-OUEN cedex
Service interventions à domicile:
01 40 10 12 00
Service Consommateurs:

0 892 698 110 

mailto:serviceconsommateur.fr@
siemens-home.bsh-group.com
Service Pièces Détachées et
Accessoires:

0 892 698 009 

www.siemens-home.bsh-group.fr

GB Great Britain

BSH Home Appliances Ltd.
Grand Union House
Old Wolverton Road
Wolverton
Milton Keynes MK12 5PT
To arrange an engineer visit, to order
spare parts or accessories or for
product advice please visit
www.siemens-home.bsh-group.com/uk
Or call

Tel.: 0344 892 8999*

* Calls are charged at the basic rate,
please check with your telephone service
provider for exact charges.

GR Greece, Ελλάς

BSH Ikiakes Siskeves A.B.E.
Central Branch Service
17 km E. O. Athinon-Lamias &
Potamou 20
14564 Kifisia
Τηλέφωνο: 210 4277 600
Τηλέφωνο: 210 4277 701
mailto:nkf-CustomerService@bshg.com
www.siemens-home.bsh-group.com/gr

HK Hong Kong, 香港

BSH Home Appliances Limited
Unit 1 & 2, 3rd Floor
North Block, Skyway House
3 Sham Mong Road
Tai Kok Tsui, Kowloon,
Hong Kong
Tel.: 2565 6151 (HK)
Toll free 0800 030 (Maccao)
Fax: 2565 6681
mailto:siemens.hk.service@bshg.com
www.siemens-home.bsh-group.com/hk

IE Republic of Ireland

BSH Home Appliances Ltd.
M50 Business Park
Ballymount Road Upper
Walkestown
Dublin 12
To arrange an engineer visit, to order
spare parts and accessories or for
product advice please call
Tel.: 01450 2655*
www.siemens-home.bsh-group.ie
* Calls are charged at the basic rate, please
check with your telephone service provider
for exact charges.

IL Israel

C/S/B/ Home Appliance Ltd.
1, Hamasger St.
North Industrial Park
Lod, 7129801
Tel.: 08 9777 222
Fax: 08 9777 245
mailto:csb-serv@csb-ltd.co.il
www.siemens-home.bsh-group.com/il

IN India, Bhārat, भारत

BSH Household Appliances
Mfg. Pvt. Ltd.
Arena House,
Main Bldg, 2nd Floor,
Plot No. 103, Road No. 12,
MIDC, Andheri East
Mumbai 400 093
Toll Free 1800 209 1850*
www.siemens-home.bsh-group.com/in
* Mo-Sa: 8.00am to 8.00pm
(exclude public holidays)

IS Iceland

Smith & Norland hf.
Noatuni 4
105 Reykjavik
Tel.: 0520 3000
Fax: 0520 3011
www.sminor.is

IT Italia, Italy

BSH Elettrodomestici S.p.A.
Via. M. Nizzoli 1
20147 Milano (MI)
Tel.: 02 412 678 200
mailto:info.it@siemens-home.
bsh-group.com
www.siemens-home.bsh-group.com/it

LB Lebanon, لبنان

Tehaco s.a.r.l.
Boulevard Dora 4043 Beyrouth
P.O. Box 90449
Jdeideh, 1202 2040
Tel.: 01 255 211
mailto:Info@Teheni-Hana.com

LU Luxembourg

BSH électroménagers S.A.
13-15, ZI Breedeweues
1259 Senningerberg
Tel.: 26 349 821
Fax: 26 349 315
Reparaturen: lux-repair@bshg.com
Ersatzteile: lux-spare@bshg.com
www.siemens-home.bsh-group.com/lu

**BSH group is a Trademark Licensee of Siemens AG.
Manufacturer's Service for Siemens Home Appliances.**

MT Malta

Aplan Limited
The Atrium
Mrieħel by Pass
BKR3000 Birkirkara
Tel.: 025 495 122
Fax: 021 480 598
mailto:lapap@aplan.com.mt

NL Nederlande, Netherlands

BSH Huishoudapparaten B.V.
Taurusavenue 36
2132 LS Hoofddorp
Storingsmelding:
Tel.: 088 424 4020
mailto:siemens-contactcenter@
bshg.com
Onderdelenverkoop:
Tel.: 088 424 4020
Fax: 088 424 4801
mailto:siemens-onderdelen@bshg.com
www.siemens-home.bsh-group.nl

NO Norge, Norway

BSH Husholdningsapparater A/S
Grensesvingen 9
0661 Oslo
Tel.: 22 66 05 73
Fax: 22 66 06 00
mailto:Siemens-Service-NO@bshg.com
www.siemens-home.bsh-group.com/no

PL Polska, Poland

BSH Sprżet Gospodarswa
Domowego sp. z o.o.
Al. Jerozolimskie 183
02-222 Warszawa
Tel.: 801 191 534
Fax: 022 572 7709
mailto:Serwis.Fabryczny@bshg.com
www.siemens-home.bsh-group.pl

PT Portugal

BSHP Electrodomésticos,
Sociedade Unipessoal, Lda.
Rua Alto do Montijo, nº 15
2790-012 Carnaxide
Tel.: 214 250 720
Fax: 214 250 701
mailto:siemens.electrodomesticos.pt@
bshg.com
www.siemens-home.bsh-group.com/pt

RO România, Romania

BSH Electrocasnice srl.
Sos. Bucuresti-Ploiesti,
nr. 19-21, sect.1
13682 Bucuresti
Tel.: 021 203 9748
Fax: 021 203 9733
mailto:service.romania@bshg.com
www.siemens-home.bsh-group.com/ro

RU Russia, Россия

ООО "БСХ Бытовые Приборы"
Сервис от производителя
Малая Калужская, 15
119071 Москва
тел.: 8 (800) 200 29 62
mailto:mok-kdhl@bshg.com
www.siemens-home.bsh-group.ru

SE Sverige, Sweden

BSH Home Appliances AB
Landsvägen 32
169 29 Solna
Tel.: 0771 19 55 00 local rate
Tel.: 0771 11 22 77 local rate
mailto:Siemens-Service-SE@bshg.com
www.siemens-home.bsh-group.com/se

SK Slovensko, Slovakia

Viac informácií (napr. záručné
podmienky, predĺžená záruka a i.)
nájdete na webových stránkach
www.siemens-home.bsh-group.com/sk/
alebo nás kontaktujte na +420 251 095 511
BSH domácí spotřebiče s.r.o.
organizačná zložka Bratislava
Trnavská cesta 50
821 02 Bratislava
Príjem opráv
Tel.: +421 238 111 139
mailto:opravy@bshg.com

TR Türkiye, Turkey

BSH Ev Aletleri Sanayi
ve Ticaret A.Ş.
Fatih Sultan Mehmet Mahallesi
Balkan Caddesi No: 51
34771 Ümraniye, İstanbul
Tel.: 0 216 444 6688*
Fax: 0 216 528 9188*
mailto:careline.turkey@bshg.com
www.siemens-home.bsh-group.com/tr

* Çağrı merkezini sabit hatlardan
aramanın bedeli şehir içi ücretlendirmede,
Çep telefonlarından ise kullanılan
tarifeye göre değişiklik göstermektedir

UA Ukraine, Україна

ТОВ "БСХ Побутова Техніка"
tel.: 044 490 2095
mailto:bsh-service.ua@bshg.com
www.siemens-home.bsh-group.com/ua

XK Kosovo

Service-General SH.P.K.
rr. Magjistralja Ferizaj Prishtine
70000 Ferizaj
Tel.: 00381 (0) 290 330 723
Tel.: 00377 44 172 309
mailto:servicegeneral527@gmail.com

ZA South Africa

BSH Home Appliances (Pty) Ltd.
15th Road Randjespark
Private Bag X36, Randjespark
1685 Midrand – Johannesburg
Tel.: 086 002 6724
Fax: 086 617 1780
mailto:appliance-service-za@bshg.com
www.siemens-home.bsh-group.com/za

BSH Hausgeräte GmbH

Carl-Wery-Straße 34
81739 München

GERMANY

siemens-home.bsh-group.com



8001179091 (9912)

- de** © Hergestellt von BSH Hausgeräte GmbH unter Markenlizenz der Siemens AG.
- en** © Manufactured by BSH Hausgeräte GmbH under Trademark License of Siemens AG.
- fr** © Fabriqué par BSH Hausgeräte GmbH titulaire des droits d'utilisation de la marque Siemens AG.
- it** © Prodotto da BSH Hausgeräte GmbH in quanto licenziatario del marchio di Siemens AG.