

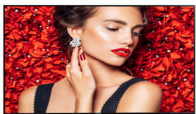


Philips Signage Solutions  
D-Line Display

55"

Edge-lit LED  
Full HD  
450cd/m<sup>2</sup>

**Signage**Solutions



55BDL4031D

## Inform. Effortlessly.

Smart, powerful 24/7 display.

Make it clear with a powerful Philips D-Line Professional Full HD Display. This responsive solution offers brilliant picture quality, simple control, and reliable connectivity.

### **Brilliant picture. Blazing processor speed.**

- Full HD. Clear images. Crisp contrast
- IPS panel: rich color consistency from every angle
- Place in landscape or portrait orientation

### **Effortless setup. Total control.**

- CMND & Control. Operate, monitor, maintain

### **Cost-effective system solution**

- Energy-saving automatic backlight control
- FailOver. Ensure your display never goes blank

**PHILIPS**

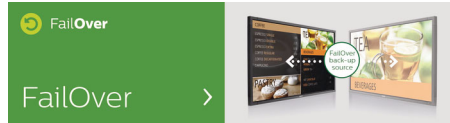
# Highlights

## CMND & Control



Run your display network over a local (LAN) connection. CMND & Control allows you to perform vital functions like controlling inputs and monitoring display status. Whether you're in charge of one screen or 100.

## FailOver



From waiting room to meeting room, never show a blank screen. FailOver lets your Philips Professional Display switch automatically between primary and secondary inputs

ensuring content keeps playing even if the primary source goes down. Simply set a list of alternate inputs to be sure your business is always on.

# Specifications

## Picture/Display

- Diagonal screen size: 54.6 inch / 139 cm
- Panel resolution: 1920x1080p
- Optimum resolution: 1920 x 1080 @ 60 Hz
- Brightness: 450 cd/m<sup>2</sup>
- Contrast ratio (typical): 1100:1
- Dynamic contrast ratio: 500,000:1
- Aspect ratio: 16:9
- Response time (typical): 12 ms
- Pixel pitch: 0.630 x 0.630 mm
- Display colors: 16.7 Million
- Viewing angle (H / V): 178 / 178 degree
- Picture enhancement: 3/2 - 2/2 motion pull down, 3D Combfilter, Motion compens. deinterlacing, Progressive scan, 3D MA deinterlacing
- Panel technology: IPS
- Placement: Landscape (24/7), Portrait (24/7)

## Connectivity

- Video input: DisplayPort (1.2), Display Port1.2x1, DVI-I x 1, HDMI (x2)
- Video output: DisplayPort1.2x1, DVI-I x1
- Audio input: 3.5 mm jack
- Audio output: 3.5mm jack
- External control: RJ45, RS232C (in/out) 2.5 mm jack, IR (in/out) 3.5 mm jack

## Supported Display Resolution

### Computer formats

Resolution	Refresh rate
1920 x 1200	60Hz
1920 x 1080	60Hz
1600 x 1200	60Hz
1440 x 900	60Hz
1366 x 768	60Hz
1360 x 768	60Hz
1280 x 800	60Hz
1280 x 768	60Hz
1024 x 768	60Hz
800 x 600	56, 60, 72, 75Hz
640 x 480	60, 67, 72, 75Hz

### Video formats

Resolution	Refresh rate
1080p	50, 60Hz
1080i	50, 60Hz
720p	50, 60Hz
576i	50Hz
576p	50Hz

480p	60Hz
480i	60Hz

## Dimensions

- Set dimensions in inch (W x H x D): 48.56 x 27.96 x 1.79 inch
- Set dimensions (W x H x D): 1233.4 x 710.3 x 45.5 mm
- Bezel width: 9.6 mm (T/L/R), 15.7 mm (B)
- Product weight (lb): 39.68 lb
- Product weight: 18.0 kg
- VESA Mount: 400 x 400 mm, M6

## Convenience

- Tiled Matrix: Up to 15 x 15
- Keyboard control: Hidden, Lockable
- Signal Loop Through: IR Loopthrough
- Network controllable: RJ45, RS232
- Screen saving functions: Pixel Shift
- Picture in picture: PIP

## Power

- Consumption (On mode): 150W( max)
- Standby power consumption: <0.5 W
- Mains power: AC (100 ~ 240 V) , 2.5A
- Consumption (Typical): 85 W

## Operating conditions

- Temperature range (operation): 0 ~ 40 °C
- Temperature range (storage): -10 ~ 50 °C
- Altitude: 0 ~ 3000 m
- MTBF: 50,000 hour(s)
- Humidity range (operation)[RH]: 10 ~ 90% (without condensation)
- Humidity range (storage) [RH]: 0 ~ 100% (without condensation)

## Sound

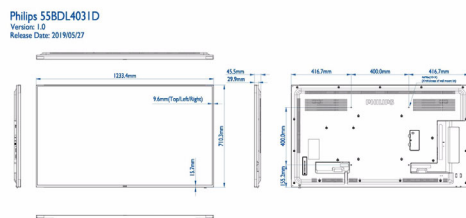
- Built-in speakers: 2 x 10 W RMS

## Accessories

- Included accessories: Remote Control, Batteries for remote control, AC Power Cord, Quick start guide, RS232 cable
- Included Accessories: Edge Alignment Kit (1)-2pcs, Edge Alignment Kit (2)-1pcs, M3 screw x 1, RS232 daisy-chain cable, SD card cover x 1, Thumb Screw x8
- Stand: BM05922 (Universal Stand-L)(Option)

## Miscellaneous

- On-Screen Display Languages: English, French, German, Italian, Polish, Turkish, Russian, Spanish, Simplified Chinese, Traditional Chinese, Arabic, Japanese
- Regulatory approvals: CE, BSMI, CB, EAC, EnergyStar 7.0, FCC, Class A, PSB, UL/cUL
- Warranty: 3 year warranty



Issue date 2019-10-08

Version: 3.0.1

12 NC: 8670 001 57457  
EAN: 87 12581 75600 0

© 2019 Koninklijke Philips N.V.  
All Rights reserved.

Specifications are subject to change without notice.  
Trademarks are the property of Koninklijke Philips N.V.  
or their respective owners.

[www.philips.com](http://www.philips.com)