

ICY BOX®

VGA Adapter Series

IB-AC504 Mini DP (DisplayPort) to VGA

IB-AC507 USB 3.0 to VGA

1. How to install a VGA adapter?

- Step 1: Connect a VGA adapter to your computer. (Notebook or Tablets)



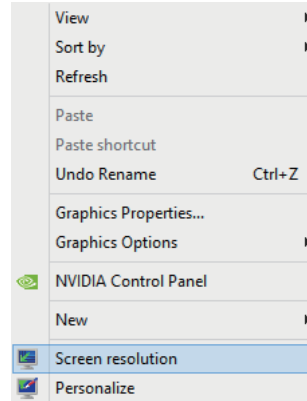
- Step 2: Connect a VGA adapter to a Monitor (TV or Projector)



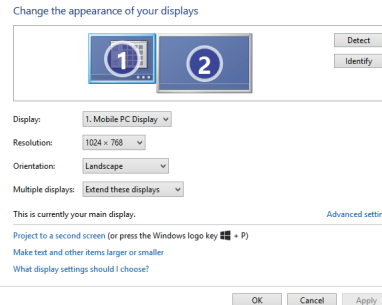
Your display will be back to the normal status
Right now, VGA adapter is able to be use.

2. How to use a VGA adapter?

- Adjust functions: Put your mouse cursor on the desktop of your computer and click right button on your mouse. Then, the following will be shown on the display.

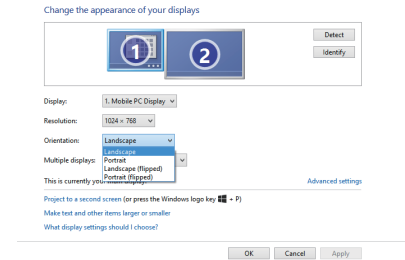


- Choose "Screen resolution"
The following will be shown on the display and you could adjust the function which you wish to use.



3. Functions:

- Display
- Resolution
- Orientation: 1. Landscape → Normal Status
- 2. Portrait → Right vertical
- 3. Landscape (Flipped) → Upside down
- 4. Portrait (Flipped) → Left vertical



- Multiple displays:

1. Duplicate these displays
2. Extend these displays →
Extend your desktop across multiple displays.
3. Show desktop only on 1
4. Show desktop only on 2

