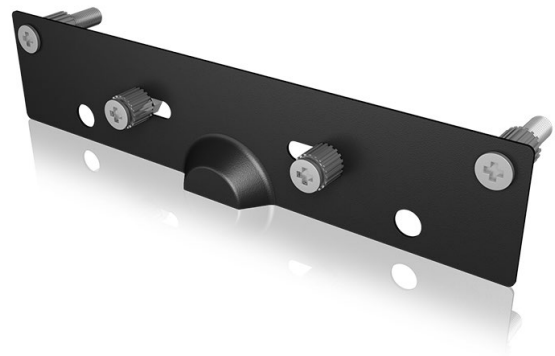


ICY BOX IB-RPA100

VESA® mount for Raspberry Pi®

Key features

- For VESA® standards 75x75 mm and 100x100 mm
- Ideal for mounting on monitor or TV
- Saves space and cleverly hides the Pi® behind the monitor
- Robust mount made of 1.5 mm steel
- Adjustable spacer



Packing content
1x IB-RPA100

Creates space in the smallest hut

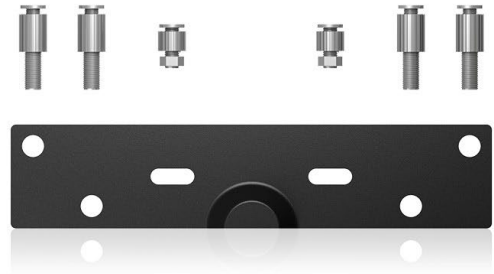
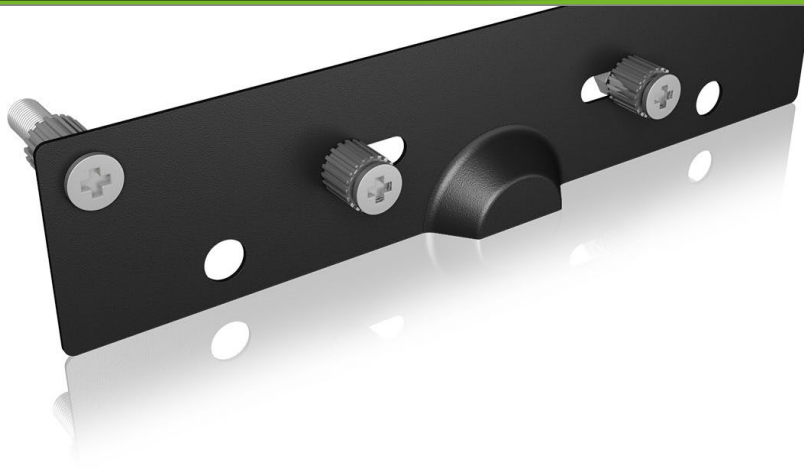
The VESA® mount helps keep your Raspberry cleverly hidden behind your monitor or TV. With the established VESA® standards 75x75 mm and 100x100 mm, you can find room for your Pi® on nearly any display.

Technical data

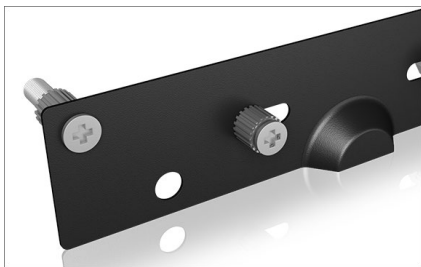
Model	IB-RPA100
Article no.	60521
EAN code	4250078169024
Brand	ICY BOX
Colour	Black
Material	Metal
Raspberry Pi® version	Independent

Systemvoraussetzungen und Informationen

A monitor or TV with VESA® 75x75 mm or 100x100 mm standard.

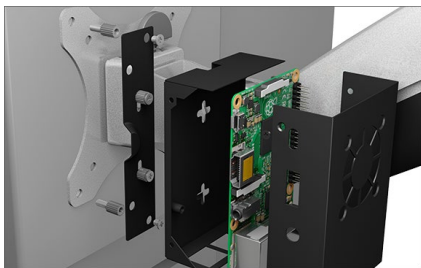


ICY BOX **IB-RPA100** VESA® mount for Raspberry Pi®



Goes deep

You can vary the distance between your enclosure and the monitor or TV using the supplied set of screws. Depending on the space you need for your Pi®.



Space for creativity

Easy to assemble and very useful. The cabling with a Raspberry Pi® is cleaned up - so there is room for new projects!



Solid hold

The VESA® mount not only ensures that your Pi® is well hidden, the Pi® is also safely attached to your monitor or TV.

Logistical data

Packing unit: 200 pcs. / carton
Total weight: 10.6 kg / Karton
Gross weight (with packing): 0.053 kg
Net weight: 0.03 kg

Dimension / carton: 500x220x220 mm
Dimension (with packing): 10x80x180 mm
Dimension of article: 5x24x110 mm
Country of origin: China