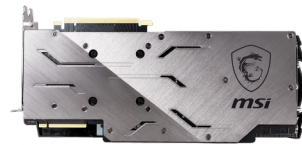




msi

GRAPHICS CARD

GeForce RTX 2070 SUPER™ GAMING X TRIO



SPECIFICATION

Model Name	GeForce RTX 2070 SUPER™ GAMING X TRIO
Graphics Processing Unit	NVIDIA® GeForce® RTX 2070 SUPER™
Interface	PCI Express x16 3.0
Cores	2560 Units
Core Clocks	Boost: 1800 MHz
Memory Speed	14 Gbps
Memory	8GB GDDR6
Memory Bus	256-bit
Output	DisplayPort x 3 (v1.4) / HDMI 2.0b x 1
HDCP Support	2.2
Power consumption	215 W
Power connectors	8-pin x 2
Recommended PSU	650 W
Card Dimension(mm)	328 x 140 x 56.5 mm
Weight (Card / Package)	1522 g / 2336 g
DirectX Version Support	12 API
OpenGL Version Support	4.5
Multi-GPU Technology	NVIDIA® NVLink™ (SLI-Ready), 2-way
Maximum Displays	4
VR Ready	Y
G-SYNC® technology	Y
Adaptive Vertical Sync	Y
Digital Maximum Resolution	7680x4320

CONNECTIONS



1. DisplayPort
2. HDMI

FEATURE



TORX FAN 3.0

Award-winning fan design combining two different fin designs for cool & quiet gaming.



TRI-FROZR THERMAL DESIGN

Using three of the award-winning TORX Fans 2.0 with Double Ball Bearings, Tri-Frozr is the pinnacle of air cooling.



ZERO FROZR

Eliminates fan noise by stopping the fans in low-load situations so you can focus on your game.



RGB Mystic Light

Customize colors and LED effects with exclusive MSI software and synchronize the look & feel with other components.



Mastery of Aerodynamics

Using groundbreaking aerodynamic techniques, the heatsink is optimized for efficient heat dissipation.



OC PERFORMANCE

MSI OC graphics cards are equipped with higher clock speeds out of the box for increased performance.



MSI Afterburner

The ultimate overclocking software with advanced control options and real-time hardware monitor.