

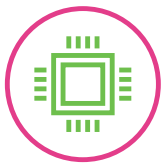
ideapad D330

LAPTOP MEETS TABLET, THE REST IS YOUR STORY.

100% LAPTOP, 100% TABLET.

A powerful Intel® processor in your 2-in-1 computer means you get the best of both worlds – the full performance of a laptop plus the fun of a tablet in one device. Edit photos in one minute, watch movies the next. Go from spreadsheets to gaming in a flash.

WHY YOU SHOULD BUY THE LENOVO IDEAPAD D330



Computer power, tablet fun

Thanks to Intel® Pentium® Silver and Celeron® processing, you have all the computing power you need—and all the fun and mobility of a lightweight tablet. From multitasking to connecting with friends online and streaming shows or movies, everything's a breeze wherever life takes you.



Enjoy life in the fast lane

In today's always-on digital world, it pays to choose a 2-in-1 with 4G LTE. This lightning-quick mobile communication technology delivers a steadier, more stable connection—resulting in faster on-the-go web browsing experience every time.

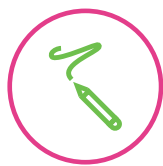


Lenovo™



It's a laptop, a tablet, and more

Fully-fledged laptop or feature-rich tablet? Switch seamlessly between the two by detaching the keyboard. This truly versatile 2-in-1 boasts a convenient trackpad, a Lenovo Active Pen, Dolby Audio™ Premium, and a beautiful 10" screen with up to Full-HD display.



Goodbye notepad, hello Lenovo Active Pen

Now, you can sketch, take notes, write, sign, or doodle away—straight onto the screen. With its pin-point accuracy and pressure-sensitive nib, the Lenovo Active Pen delivers a real pen-on-paper experience. Anytime, anywhere.



WWW.LENOVO.COM



ideapad D330

SPECIFICATIONS

Lenovo IdeaPad D330-10IGM*

PERFORMANCE

Processor

Intel® Pentium® N5000 Processor
Intel® Celeron® N4000 Processor

Operating System

Windows 10 S
Windows 10 Pro
Windows 10 Home

Graphics

Intel® Integrated Graphics

Camera

Front : 2M
Rear : 5M¹

Memory

2 GB/4 GB/8 GB LPDDR4

Storage

32 GB/64 GB/128 GB eMMC

Audio

Dolby Audio™ Premium
Single Microphone, Stereo Speaker

Battery²

Up to 13 Hours

DESIGN

Display

10.1" HD (1280 x 800) Touchscreen
10.1" FHD (1920 x 1200) Touchscreen

Dimensions (W x D x H)

Tablet

(mm) : 249 x 178 x 9.5
(inches) : 9.8" x 7.01" x 0.37"

Dock

(mm) : 249 x 186 x 8.5
(inches) : 9.8" x 7.32" x 0.33"

Weight

Tablet (WiFi SKU)
Starting at 1.32 lbs (600 g)

Tablet (LTE SKU)

Starting at 1.34 lbs (610 g)

Dock

Starting at 1.18 lbs (535 g)

Unique Features

LTE¹
Lenovo Active Pen 2 Ready¹⁰
Tablet Inverted Plugged-in

Colors

Mineral Gray
Bronze

CONNECTIVITY

WLAN

1 x 1 WiFi 802.11 ac
2 x 2 WiFi 802.11 ac

Bluetooth®

Bluetooth® 4.2

Connectors

1 x USB 3.1 Type-C™³
2 x USB 2.0 Type-A (on dock)
microSD™
Nano SIM
Combo Audio

PRELOADED SOFTWARE

Lenovo PC Manager⁴
Garantia Estendida⁵
Lenovo App Explorer⁶
McAfee LiveSafe™⁶
Tangram⁶
LinkedIn⁷
Microsoft Office Centennial⁷
Microsoft Office Centennial JP SKU⁸
Microsoft Office Mobile⁷
Lenovo Antivirus Plus⁴
Windows 10 Mobile Broadband⁴

¹ Optional.

² All battery life claims are approximate and based on test results using the MobileMark® 2014 ver 1.5 battery life benchmark test. Actual results will vary, and depend on numerous factors including product configuration and usage, software, operating conditions, wireless functionality, power management settings, screen brightness and other factors. The maximum capacity of the battery will naturally decrease with time and usage. See <https://bapoccom/products/mobilemark-2014/> for additional details.

³ PD as optional.

⁴ China only.

⁵ For BR service.

⁶ ROW.

⁷ Worldwide (WW).

⁸ Japan only.

¹⁰ Active Pen supports only tablets shipped with the pen



LENOVO SERVICES

Warranty Upgrades - On-site / In-Home Service

Maximizes PC uptime and productivity by providing convenient, fast repair services in your own home.

Accidental Damage Protection

Avoid the hassles of unexpected repair costs. Provides coverage for non-warranted damage incurred under normal operating conditions, such as minor spills, drops or damage to the integrated screen.

Warranty Extensions (1-to-3 Years Total Duration)

This fixed-term, fixed-cost service helps accurately budget for PC expenses, protect your valuable investment and potentially lower the cost of ownership over time.

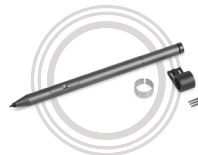
* Example of Lenovo IdeaPad catalogue naming convention



Intel® platform codes

Apollo Lake: IAP, Broadwell: IBD, Braswell: IBR, Broadwell: IBW, Baytrail: IBY, Cannonlake: ICN, Haswell: IHH, Kabylake: IKB, Skylake H: ISH, Skylake: ISK, Skylake U: ISU, Skylake Y: ISY, Skylake Z: ISZ, Gemini Lake: IGM

OPTIONS & ACCESSORIES



Lenovo Active Pen 2



USB-C SSD
256 GB/512 GB/1 TB



Lenovo Ultra Slim Sleeve



WWW.LENOVO.COM

Lenovo reserves the right to alter product offerings and specifications at any time, without notice. Lenovo makes every effort to ensure accuracy of all information but is not liable or responsible for any editorial, photographic or typographic errors. All images are for illustration purposes only. For full Lenovo product, service and warranty specifications visit www.lenovo.com. Lenovo makes no representations or warranties regarding third party products or services. **Trademarks:** The following are trademarks or registered trademarks of Lenovo: Lenovo, the Lenovo logo, IdeaCentre, yoga and yoga logo. Microsoft, Windows and Vista are registered trademarks of Microsoft Corporation. Ultrabook, Celeron, Celeron Inside, Core Inside, Intel, Intel Logo, Intel Atom, Intel Atom Inside, Intel Core, Intel Inside, Intel Inside Logo, Intel vPro, Itanium, Itanium Inside, Pentium, Pentium Inside, vPro Inside, Xeon, Xeon Phi, and Xeon Inside are trademarks of Intel Corporation in the U.S. and/or other countries. Other company, product and service names may be trademarks or service marks of others. Visit www.lenovo.com/lenovo/us/en/safecomp/ periodically for the latest information on safe and effective computing. ©2018 Lenovo. All rights reserved.



Lenovo™