

Refurbished Wet and
dry electric shaver

Shaver series 5000

Refurbished product

ComfortCut Blade System

5-direction Flex Heads



S5240

Wet or Dry, Protective shave

The Shaver Series 5000 adds speed to your morning routine with a fast, ComfortCut Blade System and fully washable heads. The shaver head is always replaced with a new head.

Easy to use

- 2 year guarantee, worldwide voltage and replaceable blades
- 40 minutes of cordless shaving
- 1 hour charging time
- 1 level battery and travel lock indicators

A comfortable and close end result

- Rounded profile of heads designed to protect skin
- Get a comfortable dry or refreshing wet shave with Aquatec
- Rounded edges move smoothly over skin for a protective shave
- Heads flex in 5 directions for a fast, close shave

Get the most out of your shaver

- Click-on trimmer for perfect moustache and sideburn trimming

Shaver series 5000

Refurbished Wet and dry electric shaver

S5240/06R1

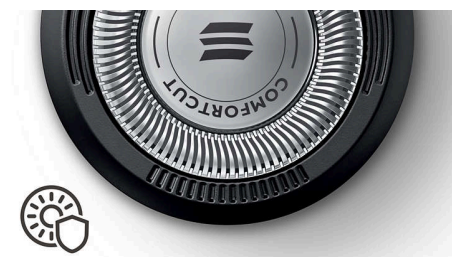
Highlights

40 minutes of cordless shaving



You'll have 40+ minutes of running time – that's about 13 shaves – on a one-hour charge. This shaver only operates in cordless mode.

ComfortCut Blade System

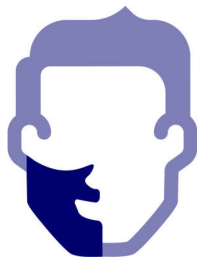


Get a comfortable shave, wet or dry. Our ComfortCut blades with rounded profile heads glide smoothly across your skin while protecting it from nicks and cuts.

LED display

The intuitive display shows relevant information, enabling you to get the best performance out of your shaver: - 1-level Battery Indicator - Cleaning Indicator - Battery Low Indicator - Replacement Head Indicator - Travel Lock Indicator

Aquatec Wet & Dry



Choose how you prefer to shave. With the Aquatec Wet and Dry seal, you can opt for a quick yet comfortable dry shave. Or you can shave wet—with gel or foam—even under the shower.

Skin Protection System

Shave closely without nicks and cuts. Our ComfortCut Blade System with rounded head profile glides smoothly across, while protecting your skin.

SmartClick precision trimmer

Click on our skin-friendly precision trimmer to finish your look. It's ideal for maintaining your moustache and trimming your sideburns.

5 direction Flex Heads



5 direction Flex Heads with 5 independent movements ensure close skin contact for a fast and close shave even on the neck and jaw line.

1 hour charging time



Shave longer with every charge, thanks to our powerful energy-efficient, long-lasting lithium-ion battery. Do a quick charge for 5 minutes and you'll have enough power for one shave.

Built to last



All of our shavers come with a 2 year worldwide guarantee and can adapt to any voltage. The long-lasting blades only need to be replaced after 2 years.

Shaver series 5000

Refurbished Wet and dry electric shaver

S5240/06R1

Specifications

Accessories

SmartClick: Precision trimmer

Maintenance: Protective cap

Power

Charging: 1 hour full charge, Quick charge 5 min for 1 shave

Battery type: Lithium-ion

Run time: 40 min/13 shaves

Automatic voltage: 100-240 V

Stand-by power: 0.1 W

Max power consumption: 9 W

Design

Handle: Ergonomic grip and handling

Colour: Bright Juicy Red - Charcoal

Service

Replacement head: Replace every 2 yrs with SH50

2 year guarantee

Shaving Performance

Shaving system: ComfortCut Blade System

SkinComfort: SkinProtection System, Aquatec Wet and Dry

Contour following: 5 direction Flex Heads

Ease of use

Cleaning: Fully washable

Display: Battery low indicator, Charging indicator, Cleaning indicator, Replace shaving heads indicator, Travel lock indicator, 1 level battery indicator

Operation: Unplug before use

