

PHILIPS

hue

## Daylo Outdoor wall light

Hue White and Colour Ambiance

LED integrated

White and coloured light

Mains powered

Smart control with Hue Bridge\*



1746530P7



## Limitless possibilities

Bring a ring of light to your outdoors with the Daylo wall light in black, a round outdoor fixture offering 16 million colours. Get a soft, diffused outward light effect, as well as a subtle backlight behind the fixture.

### Limitless possibilities

- Paint your outdoors with 16 million colours
- Unwind with warm to cool white light
- Decorate for the holidays with light
- Come home to a house filled with light

### Easy control and comfort

- Control it your way

### Full control from a smart device with the Hue bridge

- Requires a Philips Hue bridge

### Specially designed for your outdoor spaces

- Weather-proof (IP44)
- High-quality aluminium and superior synthetics

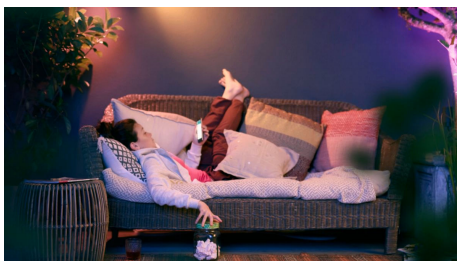
# Highlights

## Paint your outdoors



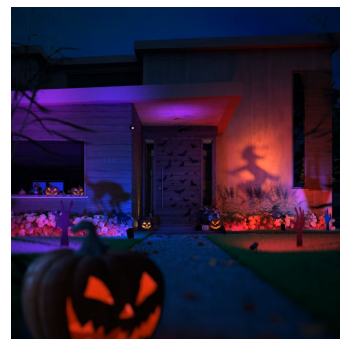
With Philips Hue outdoor lighting, there's no limit to the magic you can add. Play with 16 million colours and all shades of white light to create the effect you want. Highlight objects, trees or pathways to make your space stand out. Use the Hue app to save your favourite light settings and recall them whenever you want with the tap of a finger.

## Warm to cool white light



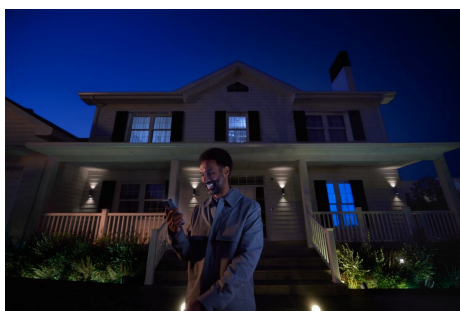
Extend your evenings with Philips Hue outdoor lighting. Set the right ambience on your patio, balcony or porch and relax. From the warm white light of a summer sun, to the ice cool daylight of winter: you can enjoy any shade of white light to fit your mood throughout the year.

## Decorate for the holidays with light



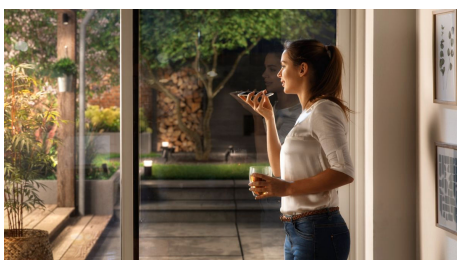
Holiday cheer starts here – with smart light! Use your Philips Hue lights to transform your home into a festive experience: bright reds and greens for Christmas, subtle pastels for spring or even an eerie purple glow to create the most haunted house on the street at Halloween.

## Come home with light



Set your Philips Hue app to recognise when you're almost home. Before you even step out of your car or walk up the path, your selected smart lights turn on automatically.

## Control it your way



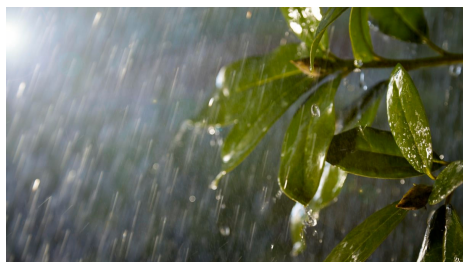
Connect your Philips Hue lights with the Bridge and start discovering the endless possibilities. Control your lights from your smartphone or tablet via the Philips Hue app, or add the indoor switches to your system to change your lights. Set timers, notifications, alarms and more for the full Philips Hue experience. Philips Hue even works with Amazon Alexa, Apple Homekit and the Google Assistant to allow you to control your lights with your voice.

## Requires a Philips Hue bridge



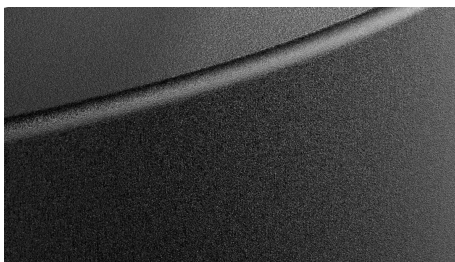
Connect your Philips Hue lights with the Bridge to control your lights from your smart phone or tablet via the Philips Hue app. Or control your Philips Hue lights with the Philips Hue dimmer indoor switch for on/off and dimming functionalities.

## Weather-proof (IP44)



This Philips Hue outdoor fixture is specially designed for use in outdoor environments and has undergone rigorous tests to ensure its performance. The IP level is described by two figures: the first one refers to the protection level against dust, the second against water. This lamp is designed with IP44: it is protected against water splashed from any direction. This product is ideal for general outdoor use.

## High-quality



The products are made specifically for outdoor use. We use the highest-quality materials to ensure the best performance in outdoor conditions, as well as smart use of materials to optimise radio frequency.

# Specifications

### Design and finishing

- Colour: Black
- Material: Metal

### Durability

- Nominal lifetime: 25,000

### Extra feature/accessory incl.

- Dimmable with the Hue app and switches: Yes
- LED integrated: Yes

### Light characteristics

- Colour rendering index (CRI):  $\geq 80$
- Colour temperature: 2000-6500 K

### Miscellaneous

- Especially designed for: Garden, Patio
- Type: Wall Lights

### Product dimensions and weight

- Net weight: 0.778 kg
- Overall height: 76 mm
- Overall length: 220 mm
- Overall width: 220 mm

### Service

- Warranty: 2 year(s)

### Technical specifications

- Lumen output at 4000K: 1,060 lm
- Light colour: Coloured and white light (RGBW)
- Mains power: 50-60 Hz, Range 220 V-240 V
- Wattage bulb included: 15 W
- Maximum wattage replacement bulb: 15
- IP code: IP44 | Wire-protected and splash-proof
- Class of protection: Class II – Double Insulated
- Lumen output at 2700K: 950 lm
- Number of light sources: 1

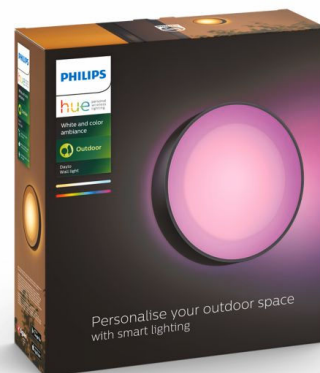
### What's supported

- Compatible with Effects feature: Yes
- Philips Hue App: Android 10.0 and above, iOS 16 or later
- WiFi: Works without Wi-Fi
- Defined support period: Minimum of 48 months after introduction date
- Max. number of accessories: 12 (with Hue Bridge)
- Communication protocol: Bluetooth, Zigbee
- Compatibility with third-party systems: Alexa, Google Home, Apple HomeKit, IFTTT, Klikaanklikuit, Matter, Samsung SmartThings, Sonos

# Box specifications

## Packaging dimensions and weight

- EAN/UPC - product: 8718696174401
- Net weight: 0.78 kg
- Gross weight: 1.07 kg
- Height: 284 mm
- Length: 95 mm
- Width: 268 mm



© 2026 Signify Holding. All rights reserved. Signify does not give any representation or warranty as to the accuracy or completeness of the information included herein and shall not be liable for any action in reliance thereon. The information presented in this document is not intended as any commercial offer and does not form part of any quotation or contract, unless otherwise agreed by Signify. Philips and the Philips Shield Emblem are registered trademarks of Koninklijke Philips N.V.