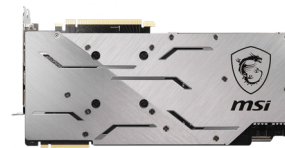




msi

GRAPHICS CARD

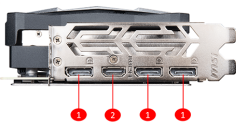
GeForce RTX 2070 SUPER™ GAMING X



SPECIFICATION

Model Name	GeForce RTX 2070 SUPER™ GAMING X
Graphics Processing Unit	NVIDIA® GeForce® RTX 2070 SUPER™
Interface	PCI Express x16 3.0
Cores	2560 Units
Core Clocks	Boost: 1800 MHz
Memory Speed	14 Gbps
Memory	8GB GDDR6
Memory Bus	256-bit
Output	DisplayPort x 3 (v1.4) / HDMI 2.0b x 1
HDCP Support	2.2
Power consumption	215W
Power connectors	6-pin x 1 / 8-pin x 1
Recommended PSU	650W
Card Dimension(mm)	297 x 143 x 56 mm
Weight (Card / Package)	1421g / 1969g
DirectX Version Support	12 API
OpenGL Version Support	4.5
Multi-GPU Technology	NVIDIA® NVLink™ (SLI-Ready), 2-way
Maximum Displays	4
VR Ready	Y
G-SYNC® technology	Y
Adaptive Vertical Sync	Y
Digital Maximum Resolution	7680 x 4320

CONNECTIONS



1. DisplayPort
2. HDMI

FEATURE



TORX FAN 3.0

Award-winning fan design combining two different fin designs for cool & quiet gaming.



Mastery of Aerodynamics

Using groundbreaking aerodynamic techniques, the heatsink is optimized for efficient heat dissipation.



ZERO FROZR

Eliminates fan noise by stopping the fans in low-load situations so you can focus on your game.



CUSTOM PCB

An optimized PCB design with enhanced power delivery provides a solid base for high performance gaming.



SOLID BACKPLATE

Increases toughness of the card to prevent bending while complementing the design.



RGB Mystic Light

Customize colors and LED effects with exclusive MSI software and synchronize the look & feel with other components.



MSI Afterburner

The ultimate overclocking software with advanced control options and real-time hardware monitor.