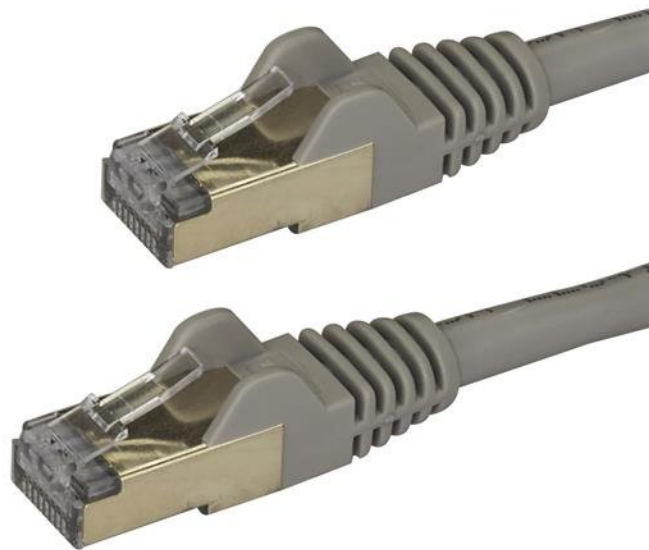


## 7.5 m CAT6a Patch Cable - Shielded (STP) - 100% Copper Wire - Snagless Connector - Gray

Product ID: 6ASPAT750CMGR



This CAT6a cable meets all Category 6a cable specifications. It ensures reliable 10Gb connections between your network devices.

### Shield Your Network

Rated for up to 500MHz frequency, each CAT6a cable is more than suitable for 10GBase-T Ethernet networks.

Built for quality performance, the cable features 100% copper and foil-shielded, twisted-pair wiring. The cable is designed to keep the data signals travelling through your network free from noise and interference. It's perfect in environments that are prone to large amounts of electromagnetic interference (EMI/RFI).

## **Protect Your Equipment**

This CAT6a patch cable is built using 100% copper wire and is tested to comply with ANSI/TIA 568 C.2 Category 6a requirements. We don't use copper-clad aluminum (CCA) wire which is subject to problems like weak power delivery, heat buildup, equipment damage and possibly fire.

The 50-micron gold connectors deliver optimum conductivity and eliminate signal loss due to oxidation or corrosion.

## **Easily Install Your Network Cables**

For trouble-free cable runs, this durable cable features snagless connectors that protect the RJ45 clips during installation, making them less likely to snag or break.

The CAT6a Ethernet cable also features moulded boots that offer strain relief by stopping the RJ45 connectors from bending at sharp angles. This reduces the risk of cable damage, which could decrease network connectivity and performance.

6ASPAT750CMGR is backed by StarTech.com's lifetime warranty for guaranteed reliability.

### Certifications, Reports and Compatibility



### Applications

- Connect PoE-enabled devices to 10Gb networks
- Connect servers to a Storage Area Network (SAN)
- Deliver data, voice and video over 10 Gigabit networks
- Connect between computers, hubs, routers and patch panels

### Features

- Shield your data against noise and EMI/RFI interference using this CAT6a Ethernet cable
- Supports 10GBase-T Ethernet networks
- Protect your network and equipment with 100% copper wire CAT6a cables
- Tested to comply with ANSI/TIA 568 C.2 CAT6a requirements
- RJ45 connector-clip protectors prevent cable snags and breaks during installation

<b>Hardware</b>	Warranty	Lifetime
	Cable Jacket Type	PVC - Polyvinyl Chloride
	Cable Shield Type	Aluminum-polyester foil
	Cable Type	Shielded Snag-less
	Fire Rating	CMG Rated (General Purpose)
	Number of Conductors	4 Pair STP
<b>Performance</b>	Cable Rating	CAT6a - 10Gbit/s
<b>Connector(s)</b>	Connector A	1 - RJ-45 Male
	Connector B	1 - RJ-45 Male
<b>Physical Characteristics</b>	Cable Length	7.5 m [24.6 ft]
	Color	Gray
	Conductor Type	Stranded Copper
	Product Height	8.200
	Product Length	750 cm [295.3 in]
	Product Width	11.600
	Weight of Product	290.000
	Wire Gauge	26 AWG
<b>Packaging Information</b>	Package Height	0.100
	Package Length	200.000
	Package Width	220.000
	Shipping (Package) Weight	300.000
<b>What's in the Box</b>	Included in Package	1 - CAT6a Cable

Product appearance and specifications are subject to change without notice.