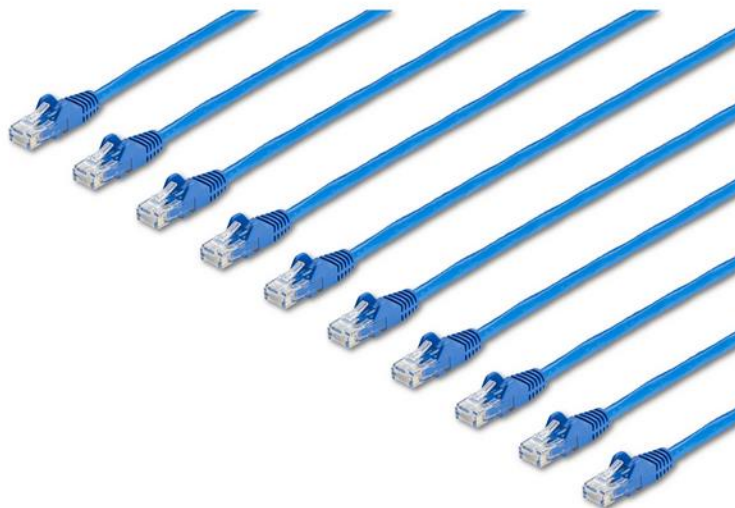


25 ft. CAT6 Ethernet Cable – 10-Pack

Product ID: N6PATCH25BL10PK



This CAT6 Ethernet cable bulk pack meets all Category 6 cable specifications, to deliver a reliable Gigabit network connection.

Protect Your Equipment

These CAT6 patch cables are built using 100% copper wire and are tested to comply with ANSI/TIA 568 C.2 Category 6 requirements. We don't use copper-clad aluminum (CCA) wire, which is subject to problems like weak power delivery, heat buildup, equipment damage and possibly fire.

The 50-micron gold connectors deliver optimum conductivity and eliminate signal loss due to oxidation or corrosion.

High-Quality Construction

Each CAT6 cable is manufactured using high-quality copper conductors and carefully constructed and tested to keep Near-End Crosstalk (NEXT) well within acceptable limits. The patch cables are constructed with 24 AWG copper wire, to ensure peak performance for demanding Ethernet applications such as Power-over-Ethernet and 4K or 1080p video streaming.

Easily Install Your Network Cables

For trouble-free cable runs, these durable cables feature snagless connectors that protect the RJ45 clips during installation, making them less likely to snag or break.

The CAT6 Ethernet cables also feature molded boots which offer strain relief by stopping the RJ45 connectors from bending at sharp angles. This reduces the risk of cable damage, which could decrease network connectivity and performance.

N6PATCH25BL10PK is backed by a StarTech.com lifetime warranty for guaranteed reliability.

Certifications, Reports and Compatibility



Features

- Protect your network and equipment with 100% copper wire CAT6 cables
- Each patch CAT6 cable is tested to comply with ANSI/TIA 568 C.2 CAT6 requirements
- RJ45 connector-clip protectors eliminate cable snags and breaks during installation
- 50-micron gold-plated connectors for a clear signal
- Convenient solution for businesses in need of multiple CAT6 networking cables

Hardware	Warranty	Lifetime
	Cable Jacket Type	PVC - Polyvinyl Chloride
	Cable Type	Snagless
	Fire Rating	CMG Rated (General Purpose)
	Number of Conductors	4 pair UTP
	Wiring Standard	TIA/EIA-568-B.1-2001 T568B
Performance	Cable Rating	CAT6 - 650 MHz
Connector(s)	Connector A	1 - RJ-45 Male
	Connector B	1 - RJ-45 Male
Physical Characteristics	Cable Length	25 ft [7.6 m]
	Color	Blue
	Conductor Type	Stranded Copper
	Product Height	8.200
	Product Length	300.2 in [762.5 cm]
	Product Width	11.600
	Weight of Product	33.000
	Wire Gauge	24 AWG
Packaging Information	Package Height	0.100
	Package Length	200.000
	Package Width	220.000
	Shipping (Package) Weight	34.000
What's in the Box	Included in Package	10 - 25 ft. CAT6 Cables

Product appearance and specifications are subject to change without notice.