

# PHILIPS

## Nyro Outdoor wall light

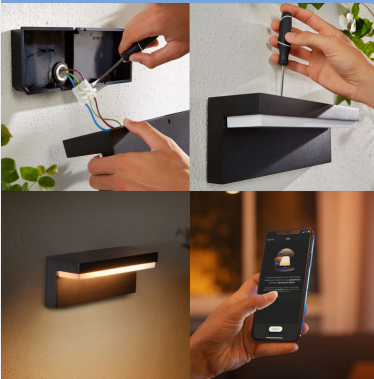
Hue White and Colour Ambiance

LED integrated

White and coloured light

Mains powered

Smart control with Hue Bridge\*



17456/30/P7



## Limitless possibilities

Complete your outdoor collection with the Nyro wall light, which casts light downwards to create a subtle light effect, whether you're shining white light or one of 16 million colours.

### Limitless possibilities

- Special light for special occasions
- Decorate for the holidays with light
- Come home to a house filled with light

### Easy control and comfort

- Set timers for your convenience
- Control it your way

### Full control from a smart device with the Hue bridge

- Requires a Philips Hue bridge

### Specially designed for your outdoor spaces

- Weather-proof (IP44)
- High-quality aluminium and superior synthetics

# Highlights

## Special light for special occasions



Holiday cheer starts here – with smart light! Use your Philips Hue lights to transform your home into a festive experience: bright reds and greens for Christmas, subtle pastels for spring or even an eerie purple glow to create the most haunted house on the street at Halloween.

## Decorate for the holidays with light



Holiday cheer starts here – with smart light! Use your Philips Hue lights to transform your home into a festive experience: bright reds and greens for Christmas, subtle pastels for spring or even an eerie purple glow to create the most haunted house on the street at Halloween.

## Come home with light



Set your Philips Hue app to recognise when you're almost home. Before you even step out of your car or walk up the path, your selected smart lights turn on automatically.

## Set timers for convenience



Enjoy longer evenings outside, finish the gardening or just take the rubbish out after sunset. Have your Philips Hue lights turn on automatically by setting schedules or using the sunset/sunrise routine. And of course, you can also turn off or dim your lights this way. You'll never have to worry whether you've left any lights on.

## Control it your way



Connect your Philips Hue lights with the Bridge and start discovering the endless possibilities. Control your lights from your smartphone or tablet via the Philips Hue app, or add the indoor switches to your system to change your lights. Set timers, notifications, alarms and more for the full Philips Hue experience. Philips Hue even works with Amazon Alexa, Apple Homekit and the Google Assistant to allow you to control your lights with your voice.

## Requires a Philips Hue bridge

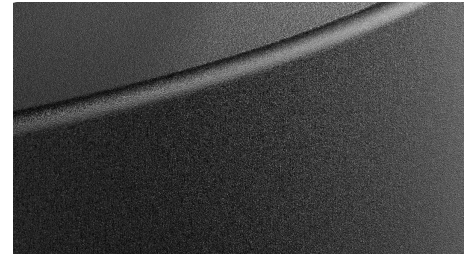


Connect your Philips Hue lights with the Bridge to control your lights from your smart phone or tablet via the Philips Hue app. Or control your Philips Hue lights with the Philips Hue dimmer indoor switch for on/off and dimming functionalities.

**Weather-proof (IP44)**

This Philips Hue outdoor fixture is specially designed for use in outdoor environments and has undergone

rigorous tests to ensure its performance. The IP level is described by two figures: the first one refers to the protection level against dust, the second against water. This lamp is designed with IP44: it is protected against water splashed from any direction. This product is ideal for general outdoor use.

**High-quality**

The products are made specifically for outdoor use. We use the highest-quality materials to ensure the best performance in outdoor conditions, as well as smart use of materials to optimise radio frequency.

## Specifications

**Design and finishing**

- Colour: Black
- Material: Metal

**Extra feature/accessory incl.**

- Dimmable with the Hue app and switches: Yes

**Light characteristics**

- Colour rendering index (CRI): 80

**Miscellaneous**

- Especially designed for: Garden and Patio
- Type: Wall Lights

**Product dimensions and weight**

- Net weight: 0.747 kg
- Height: 10.1 cm
- Length: 25.4 cm
- Width: 8.8 cm

**Service**

- Warranty: 2 year(s)

**Technical specifications**

- Lumen output at 4000K: 1,020 lm
- Lifetime up to: 25,000 h
- Light colour: 2000–6500 Hue White Colour Ambiance
- Mains power: Range 220 V–240 V, 50–60 Hz
- LED: Yes
- Built-in LED: Yes
- Number of bulbs: 1
- Wattage bulb included: 13.5 W
- IP code: IP44, protection from splashed water
- Class of protection: I – earthed
- Lumen output at 2700K: 710 lm

**What's supported**

- Compatible with Effects feature: Yes
- Philips Hue App: Android 10.0 and above, iOS 16 or later
- Defined support period: 5 years, except 3 years for Hue Bridge (see “End of Support Policy”)

**Packaging dimensions and weight**

- EAN/UPC – product: 8718696174302
- Net weight: 0.75 kg
- Gross weight: 0.97 kg
- Height: 327 mm
- Length: 105 mm
- Width: 118 mm



Issue date: 2025-03-20  
Version: 0.205

© 2025 Signify Holding. All rights reserved. Signify does not give any representation or warranty as to the accuracy or completeness of the information included herein and shall not be liable for any action in reliance thereon. The information presented in this document is not intended as any commercial offer and does not form part of any quotation or contract, unless otherwise agreed by Signify. Philips and the Philips Shield Emblem are registered trademarks of Koninklijke Philips N.V.

[www.lighting.philips.com](http://www.lighting.philips.com)