

Super high-yield print performance



The benefits of Heat-Free Technology

Epson inkjet printers use Heat-Free Technology to deliver advanced customer benefits.



Save time with consistent high-speed printing

Epson Heat-Free Technology requires no heat to warm up when it is switched on or awoken from sleep. This means it starts printing immediately compared to laser printers, which need to preheat the fuser to print. Also, there are no delays caused by accumulated heat in the printhead, and consistent high-speed printing is ensured, even for documents with high-printing density.



Less power consumption saves energy and money

Epson Heat-Free Technology uses less power than laser technology because it does not use heat to warm up. As inkjets have no fuser unit to heat, this results in significantly less energy consumption. Also, printer operating time and electricity consumption can be optimised because there are no delays caused by accumulated heat in the printhead.



Fewer replacement parts, lower environmental impact

Laser printers typically have more consumables and require periodic replacement of the drum, transfer belt and fuser in many cases. Thanks to Heat-Free Technology, our inkjet printers use fewer parts that need replacing than in a laser printer, and our printheads are not a consumable. This reduces the environmental burden of manufacturing and recycling the additional resources.



Less intervention increases productivity

The Heat-Free structure of Epson inkjet printers means that there are fewer parts that can fail, which reduces the amount of intervention required. The Heat-Free ink ejection process means that there is no heat damage to the printheads, so they last longer. As a result, Epson inkjet printers offer improved reliability and significantly reduced downtime.



Eco-responsible, uninterrupted printing

Eliminate traditional printer frustrations with the latest WorkForce Pro RIPS business printers. The Replaceable Ink Pack System (RIPS) technology uses super-high yield ink supply bags so there is less need for user intervention. With fewer consumables than comparable lasers, waste is also lower, and service interruptions are kept to a minimum.

Print up to
86,000
in mono and
up to **50,000** in colour
without changing
supplies on A3 devices¹

Print up to
50,000
in mono and
up to **20,000** in colour
without changing
supplies on A4 devices²

Epson inkjet versus competitor laser waste

This is the amount of consumables waste produced by a typical laser versus the amount of consumables required by an equivalent Epson inkjet device over 5 years³ (assuming 2,100 monthly print volume: 1,500 mono, 600 colour).



Business inkjet



Laser



Business imaging solutions



Fleet management



Epson Device Admin (EDA)

Control, analyse and manage your printer fleet centrally from one intuitive interface, designed to increase productivity, reduce costs and ensure maximum security.

Remote Service and Support



Epson Remote Services (ERS)

Epson's cloud-based device monitoring and management system helps your service provider to perform accurate remote diagnosis without compromising on the security. Arm service technicians with the information they need to achieve higher first fix rates and increase your device uptime.



ERS embedded agent

Benefit from the added value of ERS in combination with the embedded agent on the WF-C878R and WF-C879R for a seamless setup and use.

Mobile and cloud printing



Mobile and Cloud printing

Turn your tablet or smartphone into a powerful office assistant. Epson's mobile and cloud printing services allow you to print and scan from your smartphone and tablet - in the office and on the go.

Workflow and security



Epson Print Admin (EPA)

Boost productivity and monitor print usage via a server-based solution that creates a secure printing, scanning and copying environment through user-authentication.



Epson Print Admin Serverless (EPA Serverless)

Seamlessly integrate the WF-C879R into your security, compliance rules and regulations, without the burden of maintaining a server system.



Document Capture Pro (DCP)

Scan, save and share information easily. Advanced features for naming, separating and routing documents makes scanning simple and logical.



Document Capture Pro Server 2.0 (DCPS)

For our multi-function devices, with Document Capture Pro Server 2.0 administrators can manage push scan functions without installing software on individual computers.

Third party integration



Epson Open Platform (EOP)

Gain complete control of your printing operations via a web-based application that enables you to adapt your printer to meet specific and changing business requirements with solutions that help you better manage your printing.

More information about Epson and third-party solutions

Discover how Epson and its partner solutions take advantage of our printers to meet the needs of businesses from SMBs to large enterprises, and can be adapted to suit vertical market needs.

For more information please visit www.epson.eu/bis

A3+ RIPS colour

Benefit from super high ink yields for hassle-free, low maintenance printing, that boosts productivity.

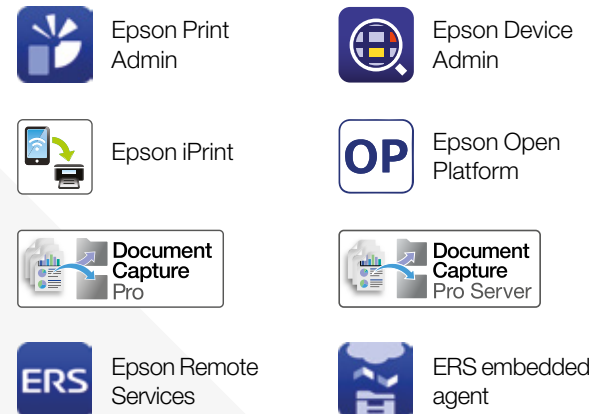


WorkForce Pro WF-C878RD3TWFC Multifunction printer

Key features:

- A3+ 4-in-1 colour with SRA3 support
- Print up to 20,000 in mono and colour without changing supplies⁴
- Fast first out time (FPOT) of 5.5 seconds
- ISO print speed of 25 ppm⁵
- Flexible media handling – up to 300 gsm
- 12.7 cm colour touch-screen
- Postscript & PCL Printer Control
- Language Emulation

Solutions



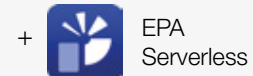
WorkForce Pro WF-C879RD3TWFC Multifunction printer

In addition to the above key features of WF-C878RD3TWFC:

- + Print up to 86,000 pages in mono and 50,000 pages in colour without changing supplies¹
- + ISO print speed of 26 ppm⁵
- + 150 sheet ADF paper capacity
- + Faster and improved scanning quality
- + Better connectivity – up to two Ethernet/fax port options
- + Optional integrated manual stapler
- + Scan on lighter stock – as little as 38 gsm

Solutions

As WF-C878RD3TWFC



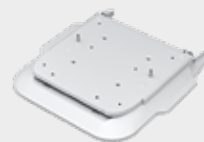
Options available for A3+ RIPS colour printers



500-sheet paper cassette



High cabinet



Printer stand



Ethernet/Fax port options (WF-C879R only)



Stapler (WF-C879R only)

A4 RIPS colour

Offering high ink yields, our A4 range offers vibrant and long lasting prints.

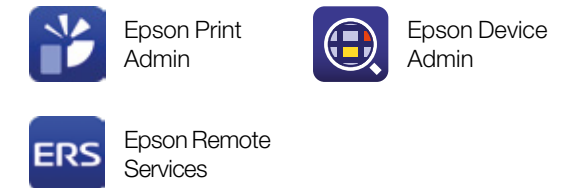


WorkForce Pro WF-C529RDTW Single function printer

Key features:

- A4 colour
- Print up to 50,000 pages in mono and up to 20,000 pages in colour without changing supplies²
- ISO print speed of 24 ppm⁵
- Fast first page out time of 4.8 seconds from ready mode
- Up to 1,330 sheet capacity
- 6.1 cm colour LCD
- Postscript & PCL Printer Control
- Language Emulation

Solutions



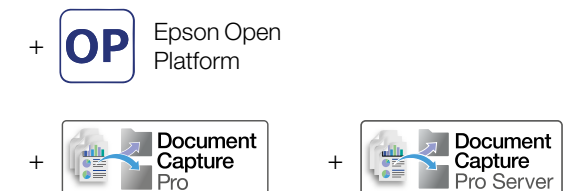
WorkForce Pro WF-C579RDTWF Multifunction printer

In addition to the above key features of WF-C529RDTW:

- + A4 4-in-1 colour
- + Duplex scan speed of 60 ipm⁵
- + 10.9 cm colour touch-screen

Solutions

As WF-C529RDTW



Options available for A4 mono and A4 RIPS colour printers



500-sheet paper cassette

A4 mono

With an ultra-fast first page out time versus comparable lasers⁶, while using up to 90% less power⁶, this range also offers one of the lowest total cost of ownership (TCO) in its class.



WorkForce Pro WF-M5298DWF Single function printer

Key features:

- A4 mono
- Print up to 40,000 pages in mono without changing supplies⁷
- ISO print speed of 24 ppm⁵
- Fast first page out time of 4.8 seconds from ready mode
- Up to 251-sheet capacity
- Automatic duplex
- 6.1 cm colour LCD
- Postscript & PCL Printer Control
- Language Emulation

Solutions



Epson Print Admin



Epson Device Admin



Epson iPrint



Epson Remote Services



WorkForce Pro WF-M5299DWF Single function printer

In addition to the above key features of WF-M5298DWF:

- + Up to 830-sheet capacity

Solutions

As WF-M5298DWF



WorkForce Pro WF-M5799DWF Multifunction printer

In addition to the above key features of WF-M5299DWF:

- + A4 4-in-1 mono
- + 10.9 cm colour touch-screen

Solutions

As WF-M5298DWF



Epson Open Platform



Document Capture Pro



Document Capture Pro Server

High quality, low cost inks

Epson's DURABrite Ultra and DURABrite Pro inks are ISO 11798 certified, producing longer lasting prints in any business environment.



Perfect prints

Enhance your printed materials with high-quality graphics. By doubling the nozzle density, the new PrecisionCore print head produces 600 dpi high-quality printing on plain paper.

Business quality documents

Increased pigment concentration in DURABrite Pro Ink produces brighter colours. As the pigment sits on the surface of the paper, the prints are hardly visible on the reverse side.

More choice

As ink is directly ejected, you can print on a wide range of paper, and because the ink partially penetrates the paper fibres, the ink doesn't fade over time.

Amazingly durable

As the pigment is infused with resin and also insoluble, you can benefit from durable prints resistant to water, smudging and highlighter pens.



	A3+ RIPS		A4 RIPS
Model	WF-C879RD3TWFC	WF-C878RD3TWFC	WF-C579RDTWF
Functions	SRA3, multifunction up to 4-in-1 device	SRA3, multifunction up to 4-in-1 device	A4 multifunction 4-in-1
First page out print	5.5 sec	5.5 sec	4.8 sec Mono / 5.3 sec Colour
Print speed (ISO)	26 ppm Mono / 25 ppm Colour	25 ppm Mono / 24 ppm Colour	24 ppm Mono / Colour
Print resolution	Up to 4800 x 1200 dpi	Up to 4800 x 1200 dpi	Up to 4800 x 1200 dpi
Monthly duty cycle (Maximum)**	75,000 pages	75,000 pages	50,000 pages
Printing emulations	PCL5c, PCL5e, PCL6, ESC/P-R, PostScript 3, PDF 1.7	PCL5c, PCL5e, PCL6, ESC/P-R, PostScript 3, PDF 1.7	PCL5c, PCL6, ESC/P-R, PostScript 3, PDF 1.7
Print from USB	Yes (PDF / TIFF / JPEG)	Yes (PDF / TIFF / JPEG)	Yes (PDF / TIFF / JPEG)
Scan speed (ISO)	50 ipm Mono (simplex) 100 ipm Colour (duplex)	25 ipm Mono (simplex) 45 ipm Colour (duplex)	30 ipm Mono (simplex) 60 ipm Colour (duplex)
Scan optical resolution (W x H)	600 x 600 dpi	600 x 600 dpi	1200 x 2400 dpi
Copy speed (ISO)	22 ipm Mono / 21 ipm Colour	22 ipm Mono / 21 ipm Colour	22 ipm Mono / Colour
Zoom ratio	25 - 400%	25 - 400%	25 - 400%
Copy resolution	Up to 600 x 600 dpi (optical) 600 x 1200 dpi (maximum)	Up to 600 x 600 dpi (optical) 600 x 1200 dpi (maximum)	Up to 600 x 600 dpi (optical) 600 x 1200 dpi (maximum)
Fax transmission speed	Up to 33.6 Kbps	Up to 33.6 Kbps	Up to 33.6 Kbps
Fax memory	6MB / 550 pages	6MB / 550 pages	6MB / 550 pages
Mobile and cloud printing	Epson iPrint, Email Print, Remote Print Driver, Scan-to-Cloud, Apple AirPrint, Google Cloud Print	Epson iPrint, Email Print, Remote Print Driver, Scan-to-Cloud, Apple AirPrint, Google Cloud Print	Epson iPrint, Email Print, Remote Print Driver, Scan-to-Cloud, Apple AirPrint, Google Cloud Print
Interfaces	Wired Network (1000 Base-T, 100 Base-TX, 10 BaseT), Wireless Network, USB: High Speed USB 2.0, USB 3.0, USB 2.0 Type A (2x), Wi-Fi Direct	Wired Network (1000 Base-T/ 100 Base TX/ 10 Base-T), Hi-Speed USB - compatible with USB 2.0 specification, USB host, Wi-Fi Direct, USB 2.0 Type A (2x), Wireless LAN IEEE 802.11a/b/g/n, USB 3.0 Type B	Bluetooth, USB: High Speed USB 2.0, Wi-Fi Direct, Wired Network (1000 Base-T, 100 Base-TX, 10 BaseT), Wireless Network
Plain paper size	A3+, A3, A4, A5, A6, B5, C4 (Envelope), C6 (Envelope), No. 10 (Envelope), Letter, Legal, 10 x 15 cm, 13 x 18 cm, 20 x 25 cm, A3, B4, B6, C5 (Envelope), DL (Envelope), HLT, EXE, Tabloid	A3+, A3, A4, A5, A6, B5, C4 (Envelope), C6 (Envelope), No. 10 (Envelope), Letter, 10 x 15 cm, 13 x 18 cm, 20 x 25 cm, Legal, A3, B4, B6, C5 (Envelope), DL (Envelope), HLT, EXE, Tabloid	A4, A5, A6, B5, B6, C4 (Envelope), C6 (Envelope), DL (Envelope), No. 10 (Envelope), Letter, Legal, 9 x 13 cm, 10 x 15 cm, 13 x 18 cm, 16:9, HLT, EXE, User defined
Paper capacity	Front: 250 sheets Rear: 150 sheets Option: 500 sheets x3	Front: 250 sheets Rear: 85 sheets Option: 500 sheets x3	Standard: 830 sheets Max: 1,330 sheets
Automatic Document Feeder (ADF)	150 sheets	50 sheets	50 sheets
LCD display	12.7 cm colour touch-screen	12.7 cm colour touch-screen	10.9 cm colour touch-screen
Power consumption Operating / Ready / Sleep / Power Off	54 Watt (standalone copying, ISO/IEC 24712 pattern), TEC 0.27 kWh/week	42 Watt (standalone copying, ISO/IEC 24712 pattern), TEC 0.21 kWh/week	29/14/1.3/0.2 W
Dimensions (W x D x H)	621 x 751 x 1177 mm	621 x 652 x 1107 mm	425 x 535 x 513 mm
Weight	-	-	25.8 kg

Product information is subject to change without prior notice.

A4 RIPS	A4 Mono		
WF-C529RDTW	WF-M5799DWF	WF-M5299DW	WF-M5298DW
A4 single function	A4 multifunction 4-in-1	A4 single function	A4 single function
4.8 sec Mono / 5.3 sec Colour	4.8 sec Mono	4.8 sec Mono	4.8 sec Mono
24 ppm Mono / Colour	24 ppm Mono	24 ppm Mono	24 ppm Mono
Up to 4800 x 1200 dpi	Up to 1200 x 2400 dpi	Up to 1200 x 2400 dpi	Up to 1200 x 2400 dpi
50,000 pages	45,000 pages	45,000 pages	45,000 pages
PCL5c, PCL6, ESC/P-R, PostScript 3, PDF 1.7	PCL5c, PCL6, Compatible with PostScript Level 3/ PDF (ver1.7), ESC/P-R	PCL5c, PCL6, Compatible with PostScript Level 3/ PDF (ver1.7), ESC/P-R	PCL5e, PCL6, Compatible with PostScript Level 3/ PDF (ver1.7), ESC/P-R
-	Yes (PDF / TIFF / JPEG)	Yes (PDF / TIFF / JPEG)	Yes (PDF / TIFF / JPEG)
-	24 ipm Mono (simplex) 24 ipm Colour (duplex)	-	-
-	1200 x 2400 dpi	-	-
-	22 ipm Mono	-	-
-	25 - 400%, auto fit function	-	-
-	Up to 600 x 600 dpi (optical) 600 x 1200 dpi (maximum)	-	-
-	Up to 33.6 Kbps	-	-
-	6MB / 550 pages	-	-
Epson iPrint, Email Print, Remote Print Driver, Apple AirPrint, Google Cloud Print	Epson iPrint, Email Print, Remote Print Driver, Apple AirPrint, Google Cloud Print	Epson iPrint, Email Print, Remote Print Driver, Apple AirPrint, Google Cloud Print	Epson iPrint, Email Print, Remote Print Driver, Apple AirPrint, Google Cloud Print
Bluetooth, USB: High Speed USB 2.0, Wi-Fi Direct, Wired Network (1000 Base-T, 100 Base-TX, 10 BaseT), Wireless Network	Near Field Communication (NFC), USB: High Speed USB 2.0, USB 1.1 type A, Wi-Fi Direct, Wired Network (1000 Base-T, 100 Base-TX, 10 BaseT), Wireless Network	Near Field Communication (NFC), USB: High Speed USB 2.0, USB 1.1 type A, Wi-Fi Direct, Wired Network (1000 Base-T, 100 Base-TX, 10 BaseT), Wireless Network	Near Field Communication (NFC), USB: High Speed USB 2.0, USB 1.1 type A, Wi-Fi Direct, Wired Network (1000 Base-T, 100 Base-TX, 10 BaseT), Wireless Network
A4, A5, A6, B5, B6, C4 (Envelope), C6 (Envelope), DL (Envelope), No. 10 (Envelope), Letter, Legal, 9 x 13 cm, 10 x 15 cm, 13 x 18 cm, 16:9, HLT, EXE, User defined	A4, A5, A6, B5, Letter, Legal, Envelope #10, DL, C6, C4, Photo 13 x 18 cm, 10 x 15 cm, 16:19 wide, user defined 55 x 127 - 215.9 x 6000 mm	A4, A5, A6, B5, Letter, Legal, Envelope #10, DL, C6, C4, Photo 9 x 13 cm, 13 x 18 cm, 10 x 15 cm, 20 x 25 cm, 16:19 wide, user defined 64 x 127 - 215.9 x 6000 mm	C4 (Envelope), Legal, A6, A5, B5, Letter, 9 x 13 cm, 10 x 15 cm, 13 x 18 cm, A4, B6, C5 (Envelope), No. 10 (Envelope), User defined, C6 (Envelope), DL (Envelope)
Standard: 830 sheets Max: 1,330 sheets	Standard 330 sheets / Max: 830 sheets (250 sheet cassette x1 / 80 sheets MP tray) 500 sheets x1	Standard 330 sheets / Max: 830 sheets (250 sheet cassette x1 / 80 sheets MP tray) 500 sheets x1	Standard: 250 sheets Max: 251 sheets
-	50 sheets	-	-
6.1 cm colour LCD	10.9 cm colour touch-screen	6.1 cm colour LCD	6.1 cm colour LCD
24/8/1.2/0.2 W	23/10/1.4/0.2 W	23/7/1.1/0.2 W	22/8/1.2/0.2 W
425 x 535 x 513 mm	425 x 535 x 357 mm	425 x 535 x 357 mm	425 x 508 x 290 mm
22.1 kg	18.3 kg	14.9 kg	14 kg

Advantage Inkjet



Be more productive and reduce your environmental impact by switching to an Epson inkjet printer.

Up to
3.5
times faster speed⁸

Up to
98%
less user intervention⁹

Up to
95%
less energy use¹⁰

Committed to corporate and social responsibility

Epson is committed to developing environmentally conscious products, which means that sustainability is considered from conception to completion. We help customers recognise the environmental gains brought on by technology, whether it is redefining manufacturing through innovative robotics, saving energy with our office printing technology or revolutionising textile printing with digital solutions.

We are committed to all 17 United Nations' sustainable development goals and to the aims of the circular economy. We offer sustainable innovations because we recognise that the choices we make as organisations, individuals or a society will be essential to our shared success.

The content of this publication has not been approved by the United Nations and does not reflect the views of the United Nations or its officials or Member States www.un.org/sustainabledevelopment



- 1 Approx. page yield for the WF-C879R. Actual yield will vary depending on images printed and usage conditions. For more information visit www.epson.eu/pageyield
- 2 Approx. page yield for the WF-C529R and WF-C579R. Actual yield will vary depending on images printed and usage conditions. For more information visit www.epson.eu/pageyield
- 3 A comparison of the HP Colour LaserJet Pro M477dw and the WF-C579R based on manufacturer's published ink yield data.
- 4 Approx. page yield with the WF-C878R series. Actual yield will vary depending on images printed and usage conditions. For more information visit www.epson.eu/pageyield
- 5 Determined in accordance with ISO/IEC 24734 showing the average of ESAT from the Office Category Test for default A4 simplex and duplex. For more information, please visit www.epson.eu/testing
- 6 Comparison made against the top 10 best selling mono laser printers in Western Europe and Central and Eastern Europe, with a print speed between 21 and 45 pages per minute, as defined by IDC in the 12 months up to December 2017. Data taken from BLI where possible, or as stated by manufacturers' websites.
- 7 Approx. page yield with the WF-M5298DWF. Actual yield will vary depending on images printed and usage conditions. For more information visit www.epson.eu/pageyield
- 8 As tested by BLI, over two months to Feb 2015, FPOT (First Page Out Time) from overnight sleep, against all competitive machines tested at time of publication. For more information visit www.epson.eu/inkjetsaving.
- 9 In independent tests, Epson's WorkForce Pro RIPS models cut time spent on interventions by up to 98% compared to lasers and laser copiers. As tested by BLI, over two months to Feb 2015, against a selection of competing machines, as commissioned by Epson. For more information visit www.epson.eu/inkjetsaving.
- 10 WorkForce Pro WF-C8190DW uses 95% less energy than the HP Color LaserJet Enterprise M750dn, the highest-selling model in the A3 colour single-function 21-30ppm printer segment as reported by IDC Q3 2015 to Q2 2019. Methodology verified by TÜV Rheinland, based on 'Typical Energy Consumption', defined under the Energy Star test procedure and presented in kWh per year.

For further information please contact your local Epson office or visit www.epson-europe.com

Algeria (+2213) 770 938 617 Austria 01 253 49 78 333 Belgium +32 (0)2 792 04 47 Czech 800/142 052 Denmark 44 50 85 85 East Africa (+254) 734 354 075
Finland 0201 552 091 France 09 74 75 04 04 (Cost of local call, operator charges may apply) Germany +49 (0) 2159/92 79 500 Greece (0030) 211 198 62 12
Hungary 06800 147 83 Ireland 01 436 7742 Israel (+972)-3-5751833 Italy 02-660321 10 (0,12 €/min) Luxembourg +352 27860692 Middle East +9714 2677638
Morocco (+212) 661 31 11 18 Netherlands +31 (0)20 708 5099 Norway +47 67 11 37 00 Poland 0-0-800 4911299 (0,16 zł/min) Portugal 707 222 111
Romania 0040 214025024 Russia (095) 777-03-55 Slovakia 0850 111 429 Southern Africa (+2711) 465-9621 Spain 93 582 15 00 Sweden 0771-400135
(Mobilsamtal – 0,99 kr/min, Lokala samtal – 0,30 kr/min, Utlandssamtal – 0,89 kr/min) Switzerland 022 592 7923 Tunisia (+216) 9833 3571 Turkey (0212) 3360303
United Kingdom 0871 42 37766 (+10p per minute plus network extras) West Africa (+234)8020727843

Trademarks and registered trademarks are the property of Seiko Epson Corporation or their respective owners.
Product information is subject to change without prior notice.

EPSON®