

**Lenovo**

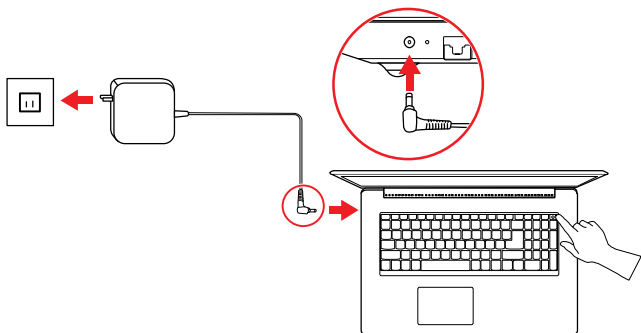
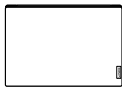
**V340-17IWL**

**SETUP GUIDE**

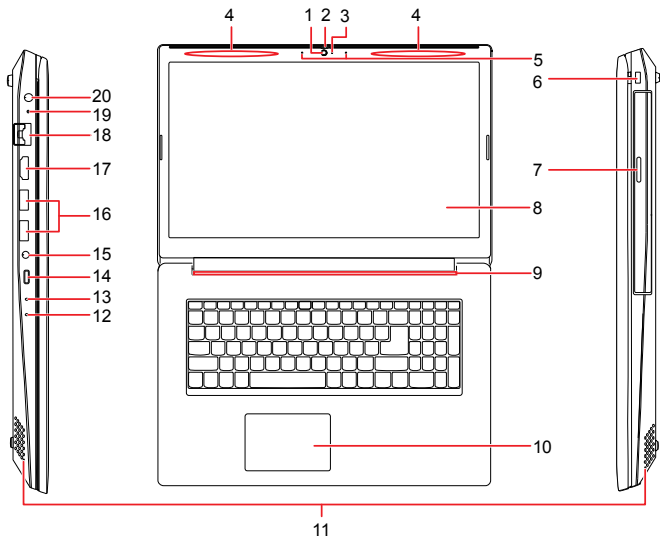
**Lenovo**

# Initial Setup

---



# Overview



- |                                    |                                       |
|------------------------------------|---------------------------------------|
| 1. Camera                          | 11. Speakers                          |
| 2. Shutter                         | 12. Power LED                         |
| 3. Camera indicator                | 13. Novo button                       |
| 4. Wireless LAN/Bluetooth antennas | 14. USB-C™ connector                  |
| 5. Microphones                     | 15. Audio connector                   |
| 6. Mini security-lock slot         | 16. USB 3.0 connector                 |
| 7. CD/DVD drive                    | 17. HDMI™ connector                   |
| 8. Screen                          | 18. Ethernet connector                |
| 9. Ventilation slots               | 19. Battery/Charging status indicator |
| 10. Touchpad                       | 20. ac power connector                |

## Note:

Read the statement on USB transfer rate in the *User Guide*. Refer to the *Safety and Warranty Guide* for accessing the *User Guide*.

# Additional information

---

## European Union — compliance with the Radio Equipment Directive

Hereby, Lenovo (Singapore) Pte. Ltd., declares that the radio equipment type V340-17IWL is in compliance with Directive 2014/53/EU.

The full text of the system EU declaration of conformity and the EU wireless module declarations are available at the following Internet addresses:

- For notebook computers:  
<https://www.lenovo.com/eu-doc-notebooks>
- For tablets:  
<https://www.lenovo.com/eu-doc-tablets>

This radio equipment operates with the following frequency bands and maximum radio-frequency power:

Technology	Frequency band [MHz]	Maximum transmit power
WLAN 802.11b/g/n	2400 - 2483.5	< 20 dBm
WLAN 802.11a/n/ac	5150 - 5725	< 23 dBm
WLAN 802.11a/n/ac	5725 - 5875	< 13.98 dBm
Bluetooth BR/EDR/LE	2400 - 2483.5	< 20 dBm

---

**First Edition (February 2019)**

**© Copyright Lenovo 2019.**

LIMITED AND RESTRICTED RIGHTS NOTICE: If data or software is delivered pursuant to a General Services Administration "GSA" contract, use, reproduction, or disclosure is subject to restrictions set forth in Contract No. GS-35F-05925.

**Reduce | Reuse | Recycle**

