

# Canon

## PIXMA TR150

Getting Started  
Démarrage  
Inbetriebnahme  
Aan de Slag-gids  
Guida Rapida  
Para Começar  
Guía de inicio  
ΞΕΚΙΝΩΝΤΑΣ  
Uppstartsguide  
Komme i gang  
Før du begynder  
Aloitusopas



<https://ij.start.canon>



Read **Safety and Important Information** (addendum) first.

Commencez par lire **Sécurité et informations importantes** (addendum).

Lesen Sie **Sicherheitsinformationen und wichtige Hinweise** (Anhang) zuerst.

Lees eerst **Veiligheidsinformatie en belangrijke informatie** (addendum).

Leggere innanzitutto **Informazioni importanti e sulla sicurezza** (addendum).

Leia **Informações Importantes e Sobre Segurança** (adendo) primeiro.

Lea primero **Información de seguridad e información importante** (apéndice).

Διαβάστε πρώτα τις **Πληροφορίες για την ασφάλεια και σημαντικές πληροφορίες** (συμπλήρωμα).

Läs **Information om säkerhet och annan viktig information** (bilaga) först.

Les **Sikkerhetsinformasjon og viktig informasjon** (tillegg) først.

Læs **Sikkerhedsoplysninger og vigtige oplysninger** (tillæg) først.

Lue **Turvallisuus ja tärkeitä tietoja** (lisähuomautus) ensin.



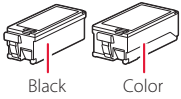
Q T 6 3 5 6 6 V 0 1



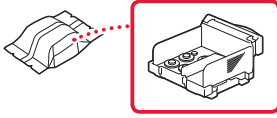
# Setting Up the Printer

## 1. Box Contents

### ● Ink Tanks



### ● Print Head



### ● AC Adapter

### ● Power Cord

### ● USB Cable

### ● Setup CD-ROM for Windows

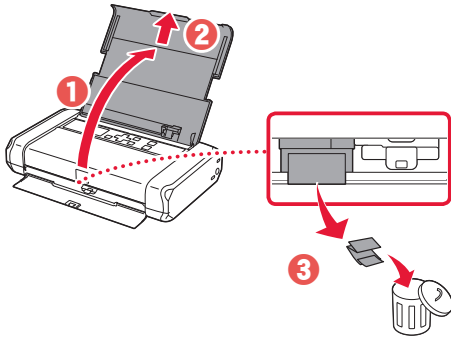
### ● Safety and Important Information

### ● Getting Started (this manual)

## 2. Removing Packing Materials



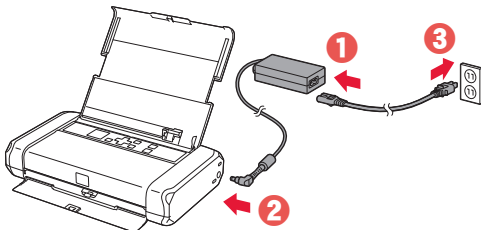
- 1 Remove and dispose of any packing materials and orange tape.
- 2 Open and extend the rear tray cover, and then remove and dispose of the protective material.
  - The paper output slot cover opens automatically.



## 3. Turning on the Printer



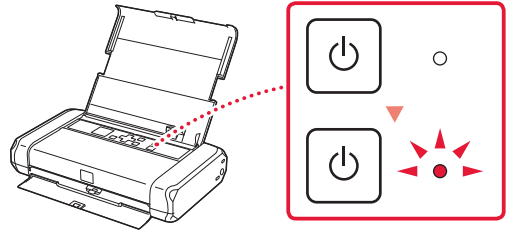
- 1 Connect the power cord.



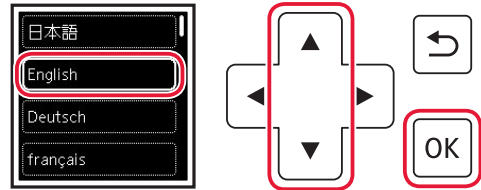
### ▶▶▶ Important

At this time, do not connect any other cables.

- 2 Press and hold the **ON** button until the **ON** lamp lights up.



- 3 Use the **▲**, **▼** and **OK** buttons to select a language.



- 4 Press the **OK** button.



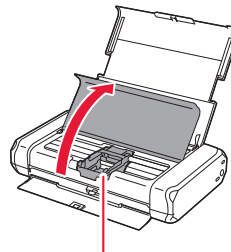
### ▶▶▶ Important

Scan the QR code for a video tutorial of the setup procedure.

## 4. Installing the Print Head



- 1 Open the print head cover.

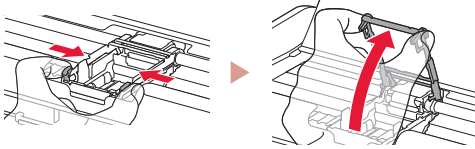


### ⚠ Caution

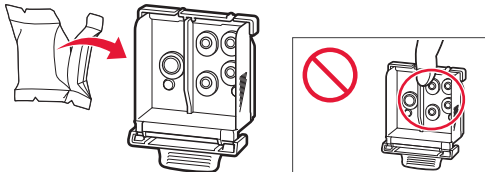
Do not touch the print head holder until it stops moving.

## Setting Up the Printer

- 2 Press inward on both tabs on the print head lock lever to release the lock, and then raise it firmly until it stops.



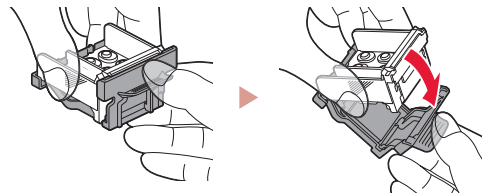
- 3 Remove the print head from its package.



### Important

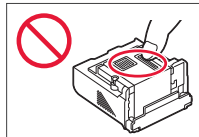
There may be some transparent or light color ink on the inside of the bag the print head comes in - this has no effect on print quality. Be careful not to get ink on yourself when handling these items.

- 4 Remove the protective cap.

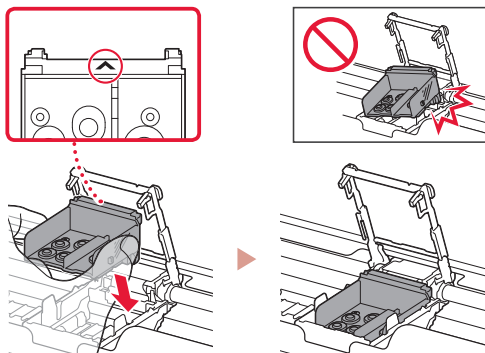


### Important

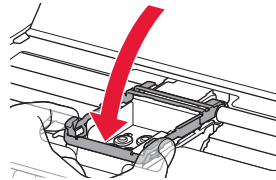
Do not touch the areas shown in the figure. Otherwise, the printer may not print correctly.



- 5 Set the print head in the print head holder so the ▲ mark faces inward.



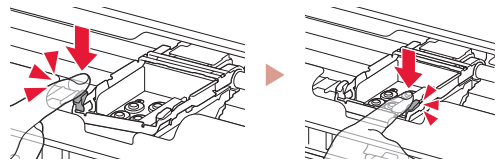
- 6 Hold both tabs on the print head lock lever, and then lower it.



### Important

Once you have installed the print head, do not remove it unnecessarily.

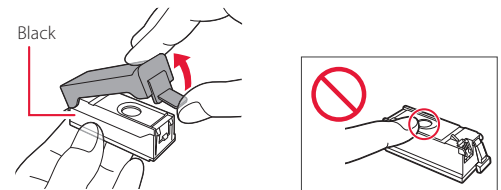
- 7 To lock the print head lock lever, push the left and then the right tabs until they snap into place.



## 5. Installing the Ink Tanks

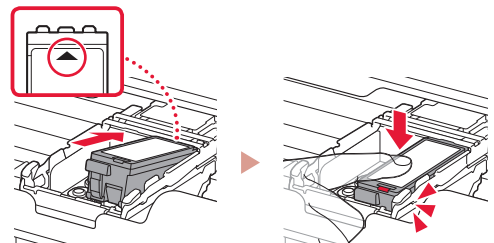


- 1 Remove the orange cap from the Black ink tank.

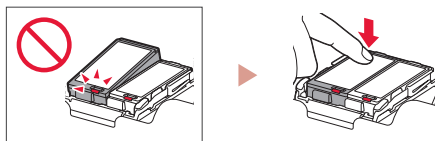
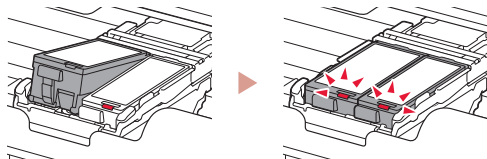


- 2 Install the ink tank.

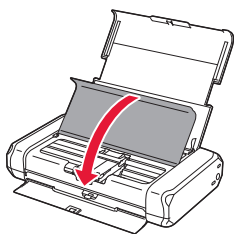
- Insert the ink tank into the right-hand side of the print head so the ▲ mark faces inward, and then press down until it clicks.
- Check that the lamp on the ink tank is lit. If the lamp is not lit, press down on the back of the ink tank.



- 3 Repeat steps 1 to 2 and install the Color ink tank as well, on the left-hand side.



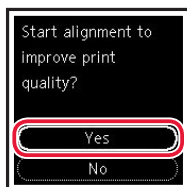
- 4 Close the print head cover.



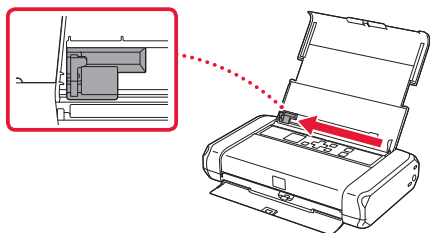
## 6. Loading Paper



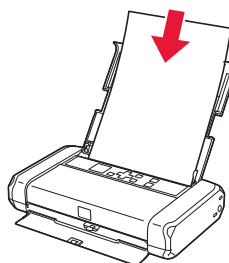
- 1 Press the **OK** button.



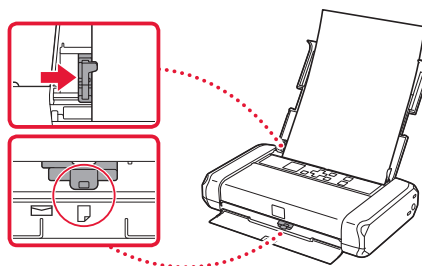
- 2 Slide the paper guide to the left.



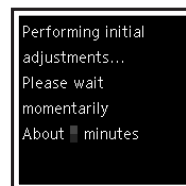
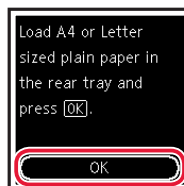
- 3 Load Letter or A4 sized plain paper against the right edge with the print side facing up.



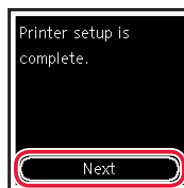
- 4 Align the paper guide to the width of the paper, and then check that the paper thickness lever is set to the right.



- 5 Press the **OK** button.



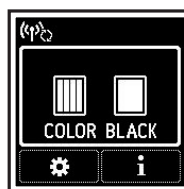
- 6 Press the **OK** button.



### »»» Important

Scan the QR code for a video tutorial of the setup procedure.

- 7 Check that the following screen appears.



## Setting Up the Printer

### What device are you connecting?



Computer



Computer and  
smartphone






Smartphone

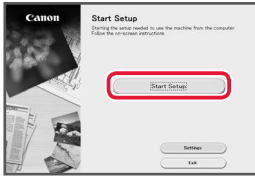
## 7-a

### Connecting to a Computer

If you are using multiple computers, perform these steps on each computer.



- 1 Access the Canon website from a computer.  
  
`https://ij.start.canon`
- 2 Select  **Set Up**.
- 3 Enter your printer's model name and click **Go**.
  - If prompted, select your country or region.
- 4 Click **Start**.
- 5 Click **If you have already prepared your printer, go to Connect**.  
 **Note**  
The following steps are for Windows users.

- 6 Click **Download**.
- 7 Run the downloaded file.
- 8 Click **Start Setup**.  

- 9 Follow the on-screen instructions.
  - These operations may take some time.
  - To connect to a smartphone as well, see "7-b. Connecting to a Smartphone" on page 5.



#### Using the Setup CD-ROM for Windows

Double click **EasySetup.exe** in the CD-ROM, and then continue from step 3. If you do not have an internet connection, open the **win** folder in the CD-ROM and double click **SETUP.exe**. This will install the printer driver.

## 7-b Connecting to a Smartphone

If you are using multiple smartphones, perform these steps on each smartphone.



Prepare the following before starting.

- 1 Enable the Wi-Fi setting on your smartphone.
- 2 Connect your smartphone to the wireless router (if you have a wireless router).

Refer to your smartphone and wireless router manuals for more details.

### 1 Install the "Canon PRINT Inkjet/SELPHY" app on your smartphone.

- Scan the QR code shown on the right to access the Canon website, and then download the app.



### 3 Open the installed app.

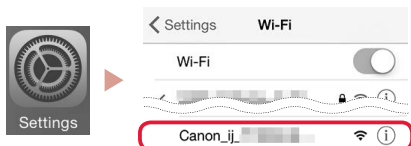


### 4 Follow the on-screen instructions in the app to add your printer.

### 2 Open your smartphone's Wi-Fi settings. Tap the network name (SSID) that starts with "Canon\_ij\_".

If "Canon\_ij\_" does not appear, proceed to step 3.

(Example of iOS screen)



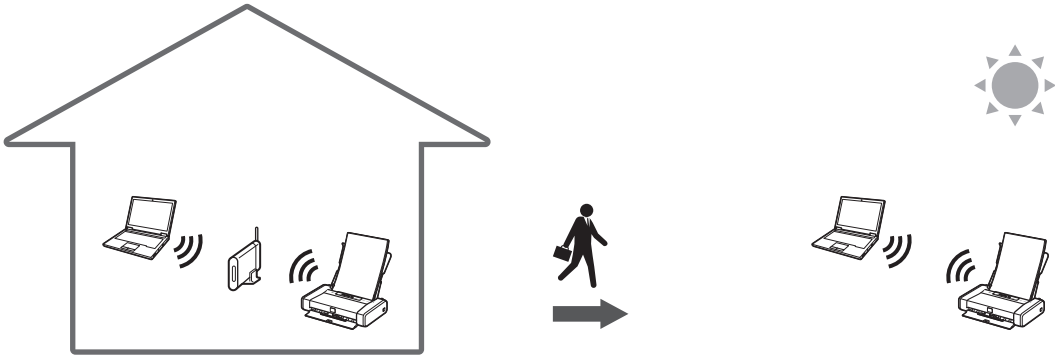
Once you have added your printer, you can print from your smartphone.

# Using your Printer Without a Wireless Router



Refer to **Print While Away from Home** in the **Online Manual**.

In order to use the printer in an area where you do not have access to Wi-Fi, you must change the settings on your computer or smartphone.



Normally you will use a wireless router to connect your printer to your computer or smartphone.

When a wireless router is not available, you can connect your printer directly to your computer or smartphone (**Wireless Direct**).



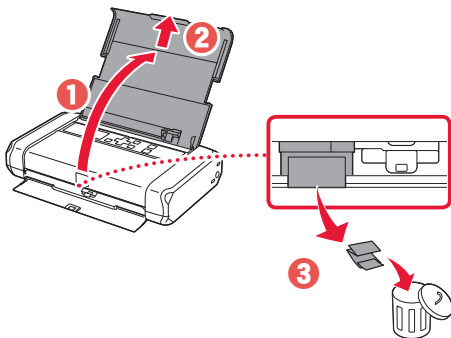
# Configuration de l'imprimante

## 1. Contenu de la boîte

- Cartouches d'encre
  - Noir
  - Couleur
- Tête d'impression
- Adaptateur secteur
- Cordon d'alimentation
- Câble USB
- CD-ROM d'installation pour Windows
- Sécurité et informations importantes
- Démarrage (ce manuel)

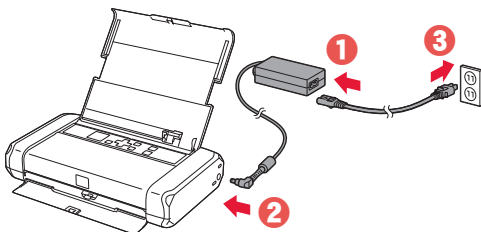
## 2. Retrait du matériel d'emballage

- 1 Enlevez et jetez tout matériel d'emballage et bande orange.
- 2 Ouvrez et déployez le couvercle du réceptacle arrière, puis enlevez et jetez le matériau protecteur.
  - Le capot de la fente d'éjection papier s'ouvre automatiquement.



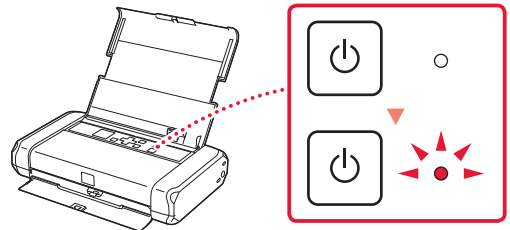
## 3. Mise sous tension de l'imprimante

- 1 Branchez le cordon d'alimentation.

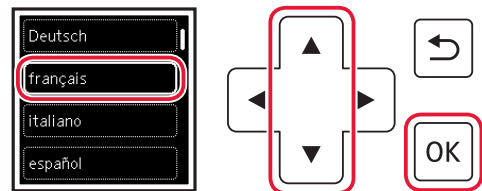


**Important**  
À ce stade, ne branchez aucun autre câble.

- 2 Appuyez sur le bouton **MARCHE (ON)** de l'imprimante et maintenez-le enfoncé jusqu'à ce que le voyant **MARCHE (ON)** s'allume.



- 3 Utilisez les boutons ▲, ▼ et OK pour sélectionner une langue.



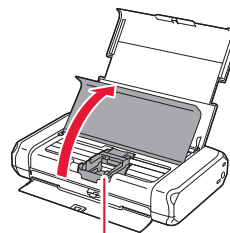
- 4 Appuyez sur le bouton OK.



**Important**  
Numériser le code QR pour obtenir un didacticiel vidéo de la procédure de configuration.

## 4. Installation de la tête d'impression

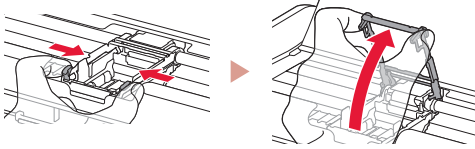
- 1 Ouvrez le capot des têtes d'impression.



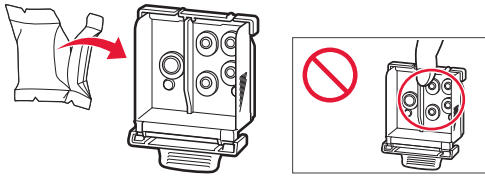
**Attention**  
Évitez tout contact avec le support de tête d'impression tant que celui-ci n'est pas arrêté.

## Configuration de l'imprimante

- 2 Appuyez vers l'intérieur sur les deux onglets du levier de verrouillage de tête d'impression pour libérer le verrou, puis soulevez-le fermement jusqu'à ce qu'il s'arrête.



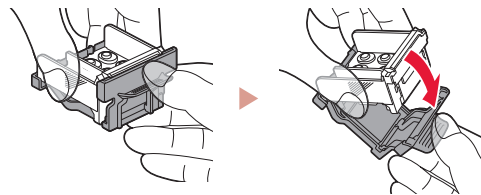
- 3 Sortez la tête d'impression de son paquet.



### Important

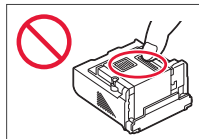
Il peut y avoir de l'encre transparente ou de couleur claire à l'intérieur du sac contenant la tête d'impression ; ceci n'a aucune incidence sur la qualité de l'impression. Veillez à ne pas vous tacher avec l'encre lorsque vous manipulez ces éléments.

- 4 Retirez la capsule de protection.

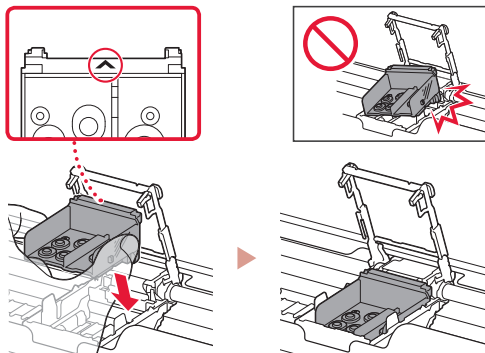


### Important

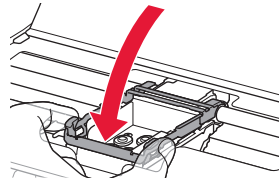
Ne touchez pas les zones présentées dans la figure. Sinon, l'imprimante pourrait ne pas imprimer correctement.



- 5 Insérez la tête d'impression dans le support de tête d'impression de sorte que la marque ▲ soit orientée vers l'intérieur.



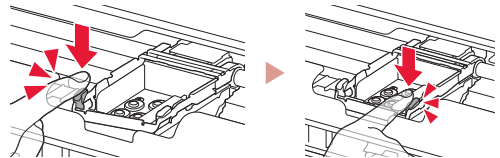
- 6 Tenez les deux onglets du levier de verrouillage de tête d'impression et abaissez celui-ci.



### Important

Une fois que vous avez installé la tête d'impression, ne la retirez pas inutilement.

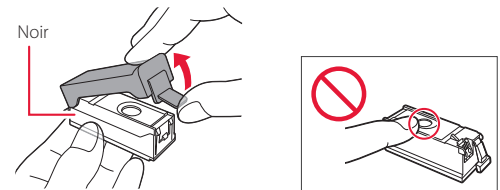
- 7 Pour verrouiller le levier de verrouillage de tête d'impression, appuyez sur l'onglet gauche puis sur l'onglet droit jusqu'à ce qu'ils s'enclenchent.



## 5. Installation des cartouches d'encre

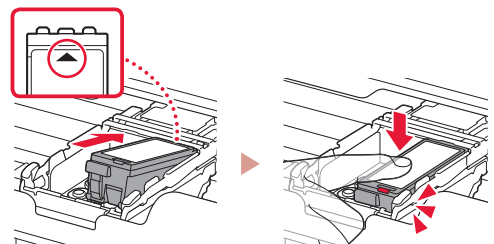


- 1 Retirez le capuchon orange de la cartouche d'encre Noir.

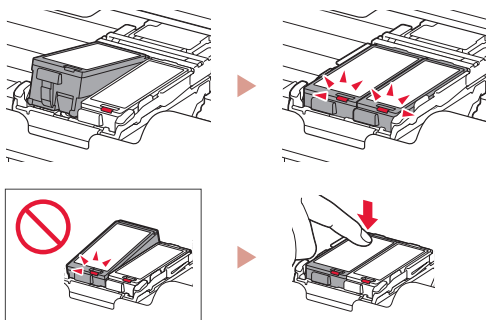


- 2 Installez la cartouche d'encre.

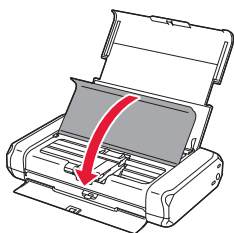
- Insérez la cartouche d'encre dans la partie droite de la tête d'impression de sorte que la marque ▲ soit orientée vers l'intérieur et appuyez dessus jusqu'à ce qu'un clic se produise.
- Vérifiez que le voyant de la cartouche d'encre est allumé. Si ce n'est pas le cas, appuyez sur la partie arrière de la cartouche d'encre.



- 3 Répétez les étapes 1 et 2 et installez également la cartouche d'encre Couleur dans la partie gauche.



- 4 Fermez le capot des têtes d'impression.



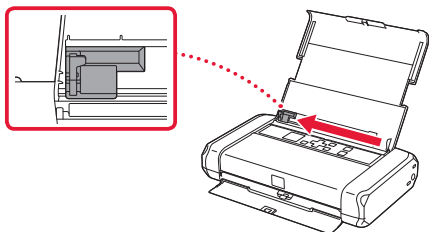
## 6. Chargement du papier



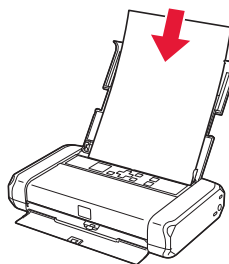
- 1 Appuyez sur le bouton **OK**.



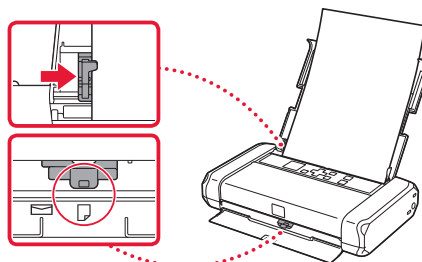
- 2 Faites glisser le guide papier vers la gauche.



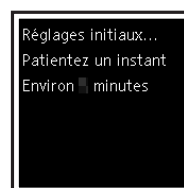
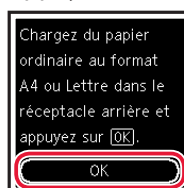
- 3 Chargez du papier ordinaire au format A4 ou Lettre le long du bord droit face à imprimer vers le haut.



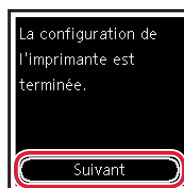
- 4 Alignez le guide papier sur la largeur du papier, puis vérifiez que le levier de sélection d'épaisseur du papier est réglé sur la droite.



- 5 Appuyez sur le bouton **OK**.



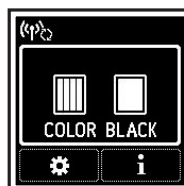
- 6 Appuyez sur le bouton **OK**.



### »»» Important

Numérisez le code QR pour obtenir un didacticiel vidéo de la procédure de configuration.

- 7 Assurez-vous que l'écran suivant s'affiche.



## Configuration de l'imprimante

### Quel périphérique connectez-vous ?



Ordinateur



Ordinateur et  
smartphone



Smartphone

## 7-a

### Connexion à un ordinateur

Si vous utilisez plusieurs ordinateurs, effectuez ces étapes sur chaque ordinateur.



- 1 Accès au site Web Canon à partir d'un ordinateur.

<https://ij.start.canon>



- 2 Sélectionnez  **Configuration**.

- 3 Entrez le nom de modèle de votre imprimante et cliquez sur **Accéder**.

- Si vous y êtes invité, sélectionnez votre pays ou votre région.

- 4 Cliquez sur **Démarrer**.

- 5 Cliquez sur **Si vous avez déjà préparé votre imprimante, allez à Connecter**.

#### »»» Remarque

Les étapes suivantes concernent les utilisateurs Windows.

- 6 Cliquez sur **Télécharger**.

- 7 Exécutez le fichier téléchargé.

- 8 Cliquez sur **Commencer la configuration**.



- 9 Suivez les instructions à l'écran.

- Ces opérations peuvent prendre du temps.
- Pour vous connecter aussi à un smartphone, voir « 7-b. Connexion à un smartphone » à la page 5.



#### Utilisation du CD-ROM d'installation pour Windows

Cliquez deux fois sur **EasySetup.exe** à partir du CD-ROM, puis continuez à partir de l'étape 3. Si vous ne disposez pas d'une connexion Internet, ouvrez le dossier **win** à partir du CD-ROM et cliquez deux fois sur **SETUP.exe**. Cette procédure permet d'installer le pilote d'imprimante.

## 7-b Connexion à un smartphone

Si vous utilisez plusieurs smartphones, effectuez ces étapes sur chaque smartphone.



Préparez les éléments suivants avant de démarrer.

- 1 Activez le paramètre Wi-Fi sur votre smartphone.
  - 2 Connectez votre smartphone au routeur sans fil (si vous disposez d'un routeur sans fil).
- Pour plus d'informations, consultez la documentation de votre smartphone et du routeur sans fil.

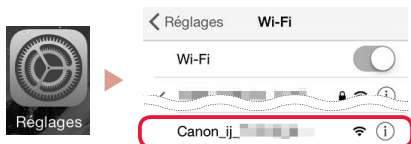
### 1 Installez l'application « Canon PRINT Inkjet/SELPHY » sur votre smartphone.

- Scannez le code QR qui apparaît à droite pour accéder au site Web Canon, puis téléchargez l'application.



### 2 Ouvrez les paramètres Wi-Fi de votre smartphone. Touchez le nom du réseau (SSID) qui commence par « Canon\_ij\_ ». Si « Canon\_ij\_ » n'apparaît pas, passez à l'étape 3.

(Exemple d'écran iOS)



### 3 Ouvrez l'application installée.



### 4 Suivez les instructions à l'écran fournies par l'application pour ajouter votre imprimante.

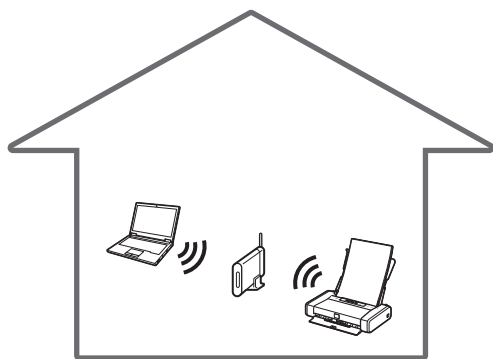
Une fois que vous avez ajouté votre imprimante, vous pouvez imprimer depuis votre smartphone.

# Utilisation de votre imprimante sans routeur sans fil



Reportez-vous à **Impression lorsque vous n'êtes pas à votre domicile** dans le **Manuel en ligne**.

Pour utiliser l'imprimante dans un lieu où vous n'avez pas d'accès au Wi-Fi, vous devez modifier les paramètres sur votre ordinateur ou votre smartphone.



Normalement, vous utiliserez un routeur sans fil pour connecter votre imprimante à votre ordinateur ou à votre smartphone.

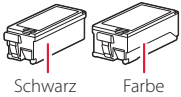


Si aucun routeur sans fil n'est disponible, vous pouvez connecter votre imprimante directement à votre ordinateur ou à votre smartphone (**Connexion directe sans fil**).

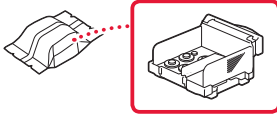
# Einrichten des Druckers

## 1. Inhalt der Box

- Tintenbehälter



- Druckkopf

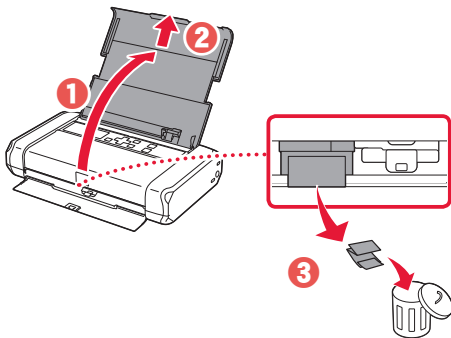


- Netzteil
- Netz Kabel
- USB-Kabel
- Installations-CD-ROM für Windows
- Sicherheitsinformationen und wichtige Hinweise
- Inbetriebnahme (dieses Handbuch)

## 2. Entfernen des Verpackungsmaterials



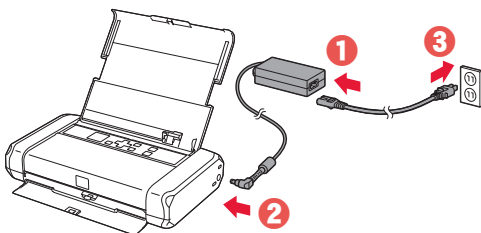
- 1 Entfernen und entsorgen Sie das gesamte Verpackungsmaterial sowie das orangefarbene Kleband.
- 2 Öffnen Sie die Abdeckung des hinteren Fachs, ziehen Sie sie heraus und entfernen und entsorgen Sie dann das Schutzmaterial.
  - Die Abdeckung für den Papierausgabeschacht öffnet sich automatisch.



## 3. Einschalten des Druckers



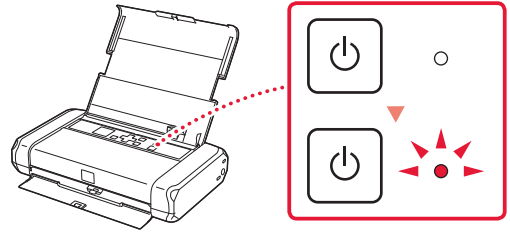
- 1 Schließen Sie das Netzkabel an.



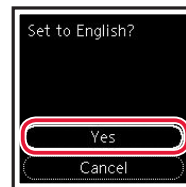
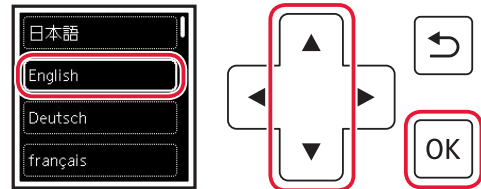
### Wichtig

Schließen Sie zum jetzigen Zeitpunkt keine weiteren Kabel an.

- 2 Halten Sie die Taste **EIN (ON)** gedrückt, bis die **EIN (ON)**-Anzeige leuchtet.



- 3 Verwenden Sie die Tasten **▲**, **▼** und **OK**, um eine Sprache auszuwählen.



- 4 Drücken Sie die Taste **OK**.



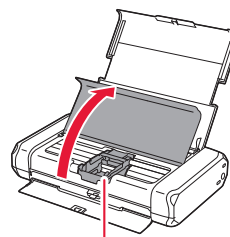
### Wichtig

Scannen Sie den QR-Code für ein Videolernprogramm zum Einrichtungsverfahren.

## 4. Installation des Druckkopfs



- 1 Öffnen Sie die Abdeckung für den Druckkopf.

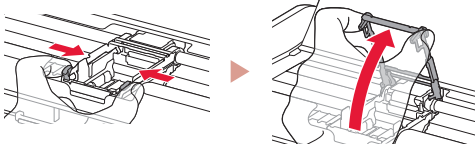


### Vorsicht

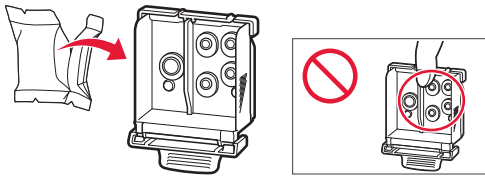
Berühren Sie den Druckkopfhalter nicht, solange er sich bewegt.

## Einrichten des Druckers

- 2 Drücken Sie beide Laschen am Sperrhebel für den Druckkopf nach innen, um die Sperre aufzuheben, und heben Sie ihn dann langsam bis zum Anschlag an.



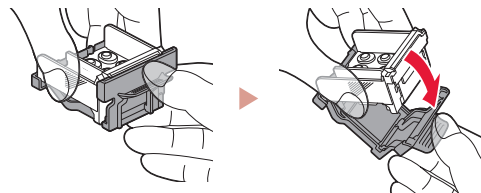
- 3 Entnehmen Sie den Druckkopf aus seiner Verpackung.



### Wichtig

Möglicherweise befindet sich etwas transparente oder helle Tinte auf der Innenseite der Tüte, in der der Druckkopf geliefert wird – dies hat keine Auswirkungen auf die Druckqualität. Achten Sie darauf, sich beim Umgang mit diesen Objekten nicht mit Tinte zu beschmutzen.

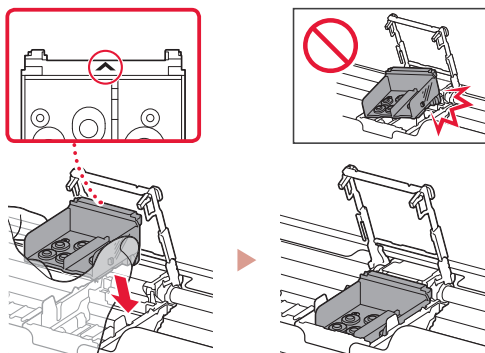
- 4 Entfernen Sie die Schutzkappe.



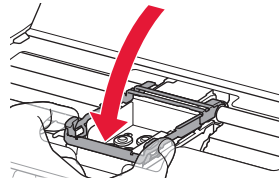
### Wichtig

Berühren Sie nicht die in der Abbildung gezeigten Bereiche. Andernfalls druckt der Drucker möglicherweise nicht richtig.

- 5 Setzen Sie den Druckkopf so in den Druckkopfhalter ein, dass das Zeichen ▲ nach innen zeigt.



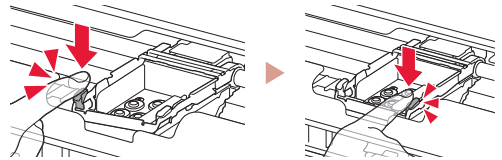
- 6 Fassen Sie den Sperrhebel für den Druckkopf an beiden Laschen an und senken Sie ihn.



### Wichtig

Entfernen Sie den Druckkopf nach dem Einsetzen nicht unnötigerweise.

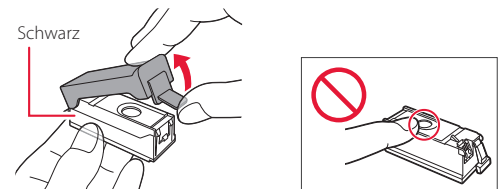
- 7 Um den Sperrhebel für den Druckkopf zu arretieren, drücken Sie die linke und dann die rechte Lasche, bis sie einrasten.



## 5. Installation der Tintenbehälter

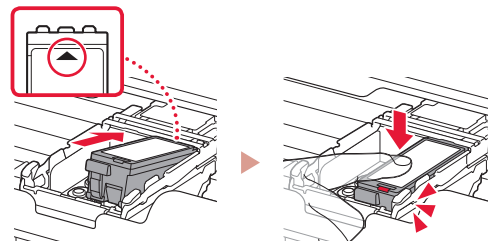


- 1 Nehmen Sie die orangefarbene Kappe vom Tintenbehälter mit schwarzer Tinte ab.



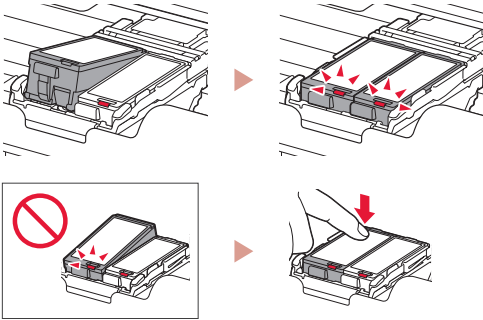
- 2 Setzen Sie den Tintenbehälter ein.

- Setzen Sie den Tintenbehälter so in die rechte Seite des Druckkopfs ein, dass das Zeichen ▲ nach innen zeigt, und drücken Sie ihn dann nach unten, bis er einrastet.
- Vergewissern Sie sich, dass die Anzeige am Tintenbehälter leuchtet. Wenn die Anzeige nicht leuchtet, drücken Sie den hinteren Teil des Tintenbehälters nach unten.

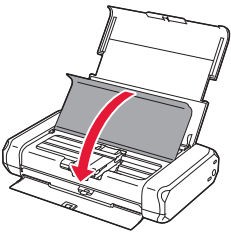




- 3 Wiederholen Sie die Schritte 1 bis 2 und setzen Sie auch den Tintenbehälter mit farbiger Tinte auf der linken Seite ein.



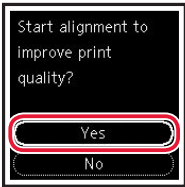
- 4 Schließen Sie die Abdeckung für den Druckkopf.



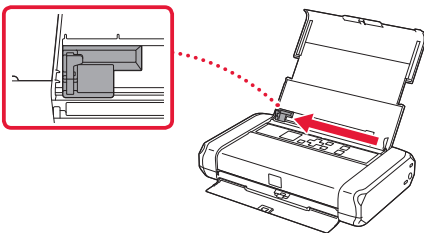
## 6. Einlegen von Papier



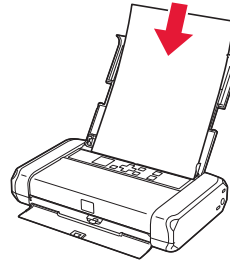
- 1 Drücken Sie die Taste **OK**.



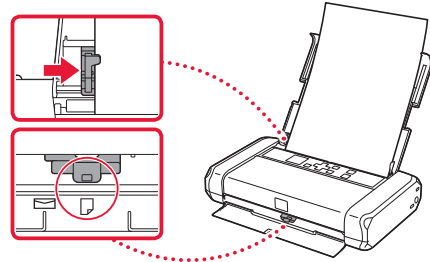
- 2 Schieben Sie die Papierführung nach links.



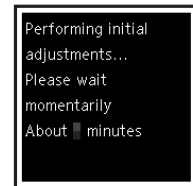
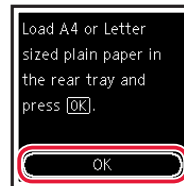
- 3 Legen Sie Normalpapier des Formats Letter oder A4 an der rechten Kante mit der bedruckbaren Seite nach oben ein.



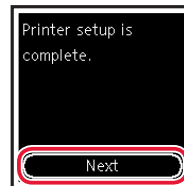
- 4 Richten Sie die Papierführung an der Breite des Papiers aus und vergewissern Sie sich, dass der Papierstärkehebel nach rechts ausgerichtet ist.



- 5 Drücken Sie die Taste **OK**.



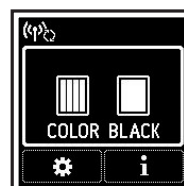
- 6 Drücken Sie die Taste **OK**.



### »»» Wichtig

Scannen Sie den QR-Code für ein Videolehrprogramm zum Einrichtungsverfahren.

- 7 Überprüfen Sie, ob der folgende Bildschirm angezeigt wird.



### Mit welchem Gerät stellen Sie eine Verbindung her?



Computer



Computer und  
Smartphone



Smartphone

## 7-a

### Herstellen einer Verbindung mit einem Computer


Wenn Sie mehrere Computer verwenden, führen Sie diese Schritte auf jedem Computer aus.



- 1 Greifen Sie von einem Computer aus auf die Canon-Website zu.

<https://ij.start.canon>

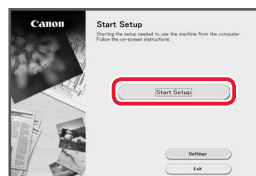


- 2 Wählen Sie  **Einrichten** aus.
- 3 Geben Sie den Modellnamen Ihres Druckers ein und klicken Sie auf **Los**.
  - Wählen Sie Ihr Land oder Ihre Region aus, wenn Sie dazu aufgefordert werden.
- 4 Klicken Sie auf **Start**.
- 5 Klicken Sie auf **Wenn Sie Ihren Drucker bereits vorbereitet haben, wechseln Sie zu Verbindung herstellen**.

#### »»» Hinweis

Die folgenden Schritte gelten für Benutzer von Windows.

- 6 Klicken Sie auf **Herunterladen**.
- 7 Führen Sie die heruntergeladene Datei aus.
- 8 Klicken Sie auf **Setup starten (Start Setup)**.



- 9 Befolgen Sie die Anweisungen auf dem Bildschirm.
  - Diese Verfahren können einige Zeit dauern.
  - Um auch eine Verbindung mit einem Smartphone herzustellen, lesen Sie „7-b. Herstellen einer Verbindung mit einem Smartphone“ auf Seite 5.



Verwenden der Installations-CD-ROM für Windows

Doppelklicken Sie auf **EasySetup.exe** auf der CD-ROM und fahren Sie dann bei Schritt 3 fort. Wenn Sie keinen Internetzugang haben, öffnen Sie den Ordner **win** auf der CD-ROM und doppelklicken Sie auf **SETUP.exe**. Dadurch wird der Druckertreiber installiert.

## 7-b

## Herstellen einer Verbindung mit einem Smartphone

Wenn Sie mehrere Smartphones verwenden, führen Sie diese Schritte auf jedem Smartphone aus.



Bereiten Sie Folgendes vor, bevor Sie beginnen.

- 1 Aktivieren Sie die Wi-Fi-Einstellung auf Ihrem Smartphone.
  - 2 Stellen Sie eine Verbindung zwischen Ihrem Smartphone und dem Wireless Router her (wenn Sie über einen Wireless Router verfügen).
- Weitere Informationen finden Sie in den Handbüchern zu Ihrem Smartphone und dem Wireless Router.

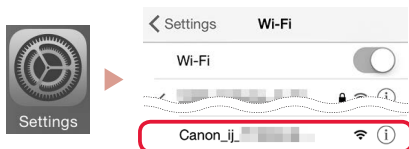
### 1 Installieren Sie die App „Canon PRINT Inkjet/SELPHY“ auf Ihrem Smartphone.

- Scannen Sie den QR-Code auf der rechten Seite, um die Canon-Website aufzurufen, und laden Sie dann die App herunter.



### 2 Öffnen Sie die Wi-Fi-Einstellungen auf Ihrem Smartphone. Tippen Sie auf den Namen des Netzwerks (SSID), das mit „Canon\_ij\_“ beginnt. Wenn „Canon\_ij\_“ nicht angezeigt wird, fahren Sie mit Schritt 3 fort.

(Beispiel für iOS-Bildschirm)



### 3 Öffnen Sie die installierte App.



### 4 Befolgen Sie die Anweisungen auf dem App-Bildschirm, um Ihren Drucker hinzuzufügen.

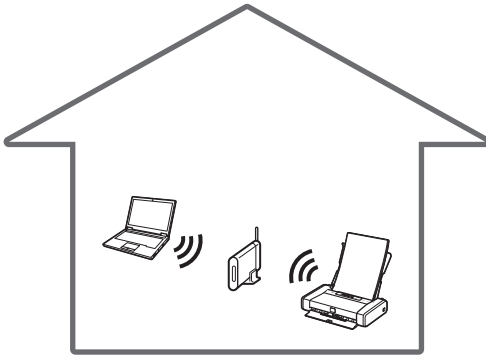
Sobald Sie Ihren Drucker hinzugefügt haben, können Sie über Ihr Smartphone drucken.

# Verwenden des Druckers ohne Wireless Router



Weitere Informationen finden Sie unter **Drucken von unterwegs** im **Online-Handbuch**.

Wenn Sie den Drucker in einem Bereich verwenden möchten, in dem Sie keinen Zugriff auf Wi-Fi haben, müssen Sie die Einstellungen auf Ihrem Computer oder Smartphone ändern.



Normalerweise verwenden Sie einen Wireless Router, um Ihren Drucker mit Ihrem Computer oder Smartphone zu verbinden.

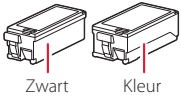


Wenn kein Wireless Router verfügbar ist, können Sie Ihren Drucker direkt mit Ihrem Computer oder Smartphone verbinden (**Drahtlos Direkt**).

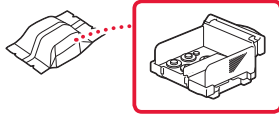
# De printer instellen

## 1. Inhoud van de doos

● Inkt tanks



● Printkop



● Netspanningsadapter

● Installatie-cd-rom voor Windows

● Netsnoer

● Veiligheidsinformatie en belangrijke informatie

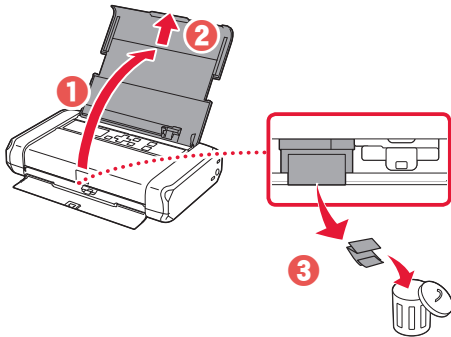
● USB-kabel

● Aan de Slag-gids (deze handleiding)

## 2. Verpakkingsmateriaal verwijderen



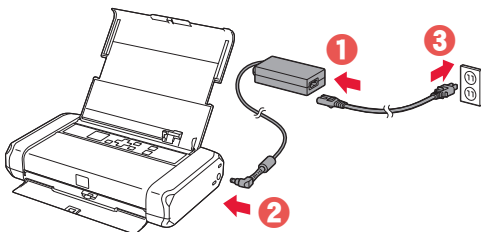
- 1 Verwijder het verpakkingsmateriaal en de oranje tape en gooi het weg.
- 2 Open de klep van de achterste lade, trek hem uit, verwijder het beschermende materiaal en gooi het weg.
  - De klep van de papieruitvoersleuf wordt automatisch geopend.



## 3. De printer inschakelen



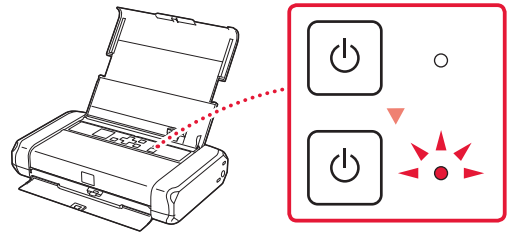
- 1 Sluit het netsnoer aan.



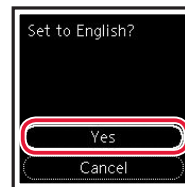
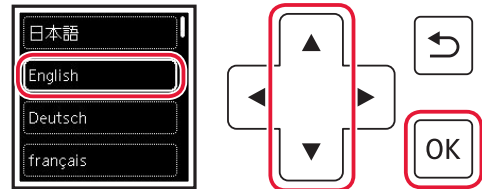
►►► **Belangrijk**

Sluit op dit moment nog geen andere kabels aan.

- 2 Houd de knop **AAN (ON)** op de printer ingedrukt totdat het **AAN (ON)**-lampje brandt.



- 3 Gebruik de knoppen ▲, ▼ en OK om een taal te selecteren.



- 4 Druk op de knop **OK**.



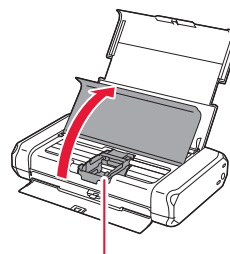
►►► **Belangrijk**

Scan de QR-code voor een videozelfstudie van de installatieprocedure.

## 4. De printkop installeren



- 1 Open het klepje over de printkop.

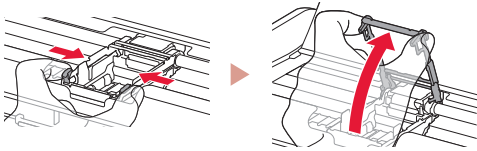


▲ **Let op**

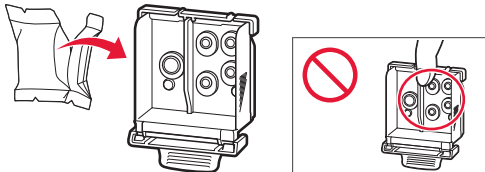
Raak de printkophouder niet aan totdat deze stopt met bewegen.

## De printer instellen

- 2 Druk beide lipjes op de printkopvergrendeling naar binnen om de vergrendeling te openen en trek deze omhoog totdat hij stopt.



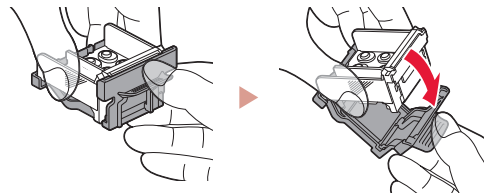
- 3 Haal de printkop uit de verpakking.



### Belangrijk

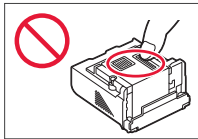
Er zit mogelijk wat transparante of lichte inkt op de binnenkant van de zak waarin de printkop wordt geleverd, maar dit is niet van invloed op de afdrukkwaliteit. Wees voorzichtig dat u geen inkt op u krijgt wanneer u deze items vastpakt.

- 4 Verwijder het beschermkapje.

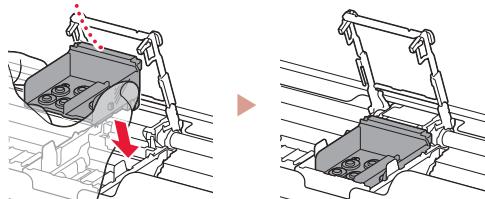


### Belangrijk

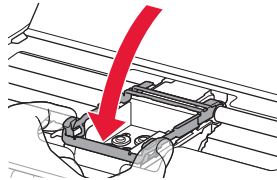
Raak de aangegeven gebieden in de afbeelding niet aan. De printer kan anders mogelijk niet correct afdrukken.



- 5 Plaats de printkop in de printkophouder, waarbij de markering ▲ naar binnen is gericht.



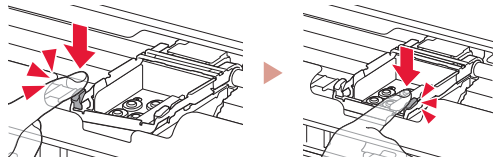
- 6 Pak beide lipjes op de printkopvergrendeling vast en duw deze omlaag.



### Belangrijk

Nadat u de printkop hebt geïnstalleerd, mag u deze niet onnodig verwijderen.

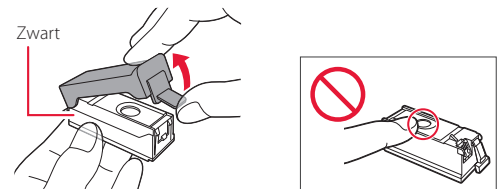
- 7 U vergrendelt de printkopvergrendeling door op het linkerlipje en daarna op het rechterlipje te duwen totdat ze vastklikken.



## 5. De inkt tanks installeren

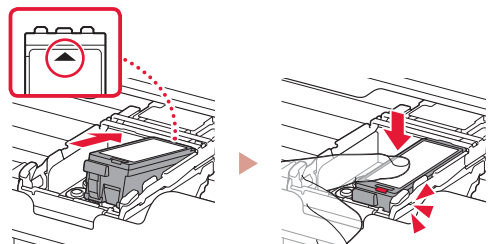


- 1 Verwijder het oranje kapje van de zwarte inkttank.

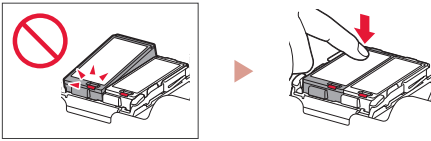
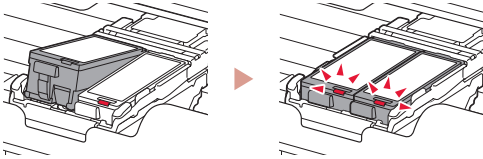


- 2 Installeer de inkttank.

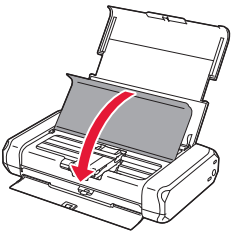
- Plaats de inkttank rechts in de printkop, waarbij de markering ▲ naar binnen is gericht, en druk hem omlaag totdat hij klikt.
- Controleer of het lampje op de inkttank brandt. Als het lampje niet brandt, drukt u de achterkant van de inkttank omlaag.



- 3 Herhaal stap 1 tot en met 2 om ook de kleureninkt tank aan de linkerkant te plaatsen.



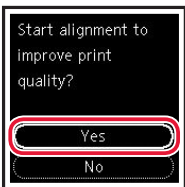
- 4 Sluit het klepje over de printkop.



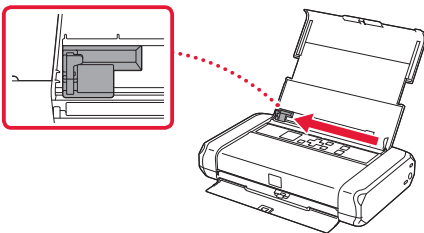
## 6. Papier plaatsen



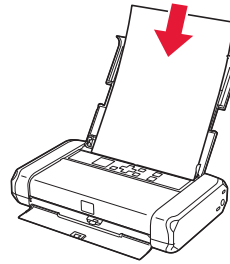
- 1 Druk op de knop **OK**.



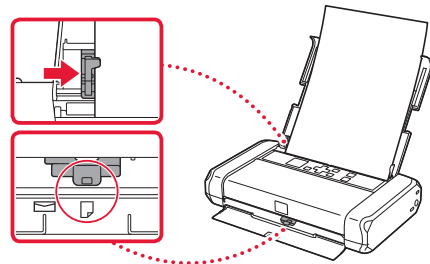
- 2 Schuif de papiergeleider naar links.



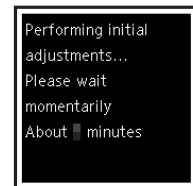
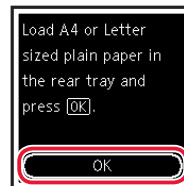
- 3 Plaats normaal papier van Letter- of A4-formaat tegen de rechterraand met de afdrukkzijde omhoog.



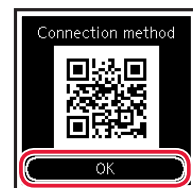
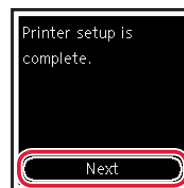
- 4 Lijn de papiergeleider uit met de breedte van het papier en controleer of de hendel voor papierdikte naar rechts is geschoven.



- 5 Druk op de knop **OK**.



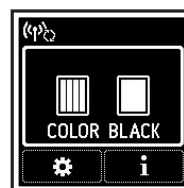
- 6 Druk op de knop **OK**.



### »»» Belangrijk

Scan de QR-code voor een videozelfstudie van de installatieprocedure.

- 7 Controleer of het volgende scherm verschijnt.



### Met welk apparaat maakt u verbinding?



Computer



Computer en  
smartphone



Smartphone

## 7-a

### Verbinden met een computer

Als u meerdere computers gebruikt, voert u deze stappen uit op elke computer.



- 1 Ga naar de Canon-website op een computer.

<https://ij.start.canon>



- 2 Selecteer  **Installatie**.

- 3 Voer de modelnaam van de printer in en klik op **Ga**.

- Selecteer uw land of regio wanneer u daarom wordt gevraagd.

- 4 Klik op **Start**.

- 5 Klik op **Als u uw printer al hebt voorbereid, gaat u naar Verbinden**.

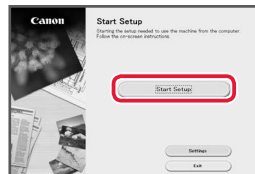
#### ▶▶▶ Opmerking

De volgende stappen zijn bedoeld voor Windows-gebruikers.

- 6 Klik op **Downloaden**.

- 7 Voer het gedownloadde bestand uit.

- 8 Klik op **Beginnen met instellen (Start Setup)**.



- 9 Volg de instructies op het scherm.

- Deze handelingen kunnen enige tijd duren.
- Als u ook verbinding wilt maken met een smartphone, raadpleegt u "7-b. Verbinden met een smartphone" op pagina 5.



De installatie-cd-rom gebruiken voor Windows

Dubbelklik op **EasySetup.exe** vanaf de cd-rom en ga verder vanaf stap 3. Als u geen internetverbinding hebt, opent u de map **win** van de cd-rom en dubbelklikt u op **SETUP.exe**. Hiermee wordt het printerstuurprogramma geïnstalleerd.



## 7-b

### Verbinden met een smartphone

Als u meerdere smartphones gebruikt, voert u deze stappen uit op elke smartphone.



Bereid het volgende voor voordat u begint.

- 1 Schakel de Wi-Fi-instelling op uw smartphone in.
- 2 Verbind uw smartphone met de draadloze router (als u een draadloze router gebruikt). Raadpleeg de handleiding van uw smartphone en draadloze router voor meer informatie.

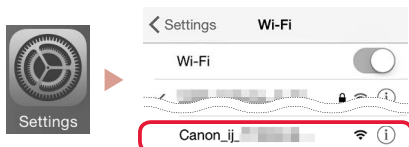
#### 1 Installeer de app "Canon PRINT Inkjet/SELPHY" op uw smartphone.

- Scan de QR-code rechts om naar de Canon-website te gaan en de app te downloaden.



#### 2 Open de Wi-Fi-instellingen op uw smartphone. Tik op de netwerknaam (SSID) die met "Canon\_ij\_" begint. Als "Canon\_ij\_" niet wordt weergegeven, gaat u verder met stap 3.

(Voorbeeld van iOS-scherm)



#### 3 Open de geïnstalleerde app.



#### 4 Volg de instructies op het scherm in de app om de printer toe te voegen.

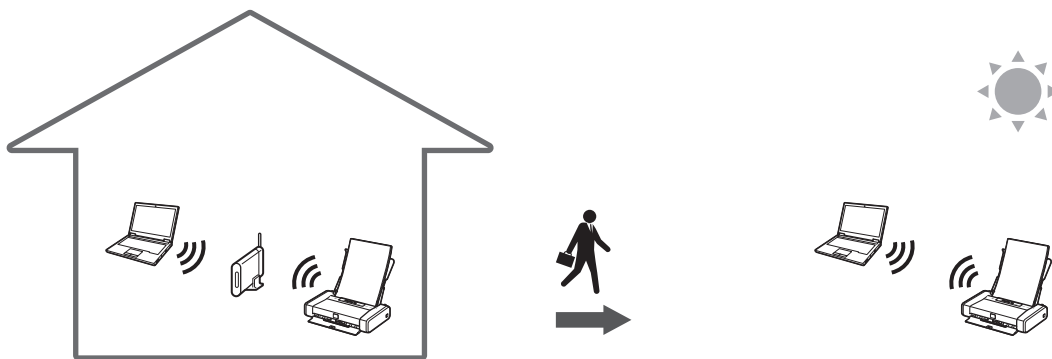
Nadat u de printer hebt toegevoegd, kunt u afdrukken vanaf uw smartphone.

## De printer gebruiken zonder een draadloze router



Raadpleeg **Afdrukken op afstand** in de **Online handleiding**.

Als u de printer wilt gebruiken op een locatie waar u geen toegang hebt tot Wi-Fi, moet u de instellingen op uw computer of smartphone wijzigen.



Gewoonlijk gebruikt u een draadloze router om de printer te verbinden met uw computer of smartphone.

Als er geen draadloze router beschikbaar is, kunt u de printer rechtstreeks verbinden met uw computer of smartphone (**Draadloos direct**).

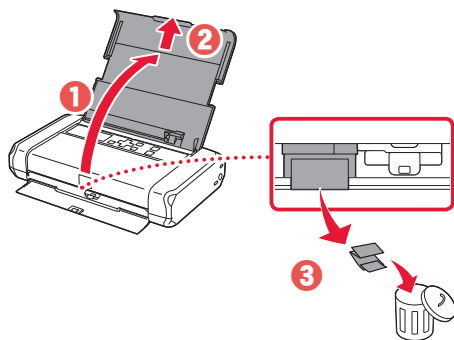
# Impostazione della stampante

## 1. Contenuto della scatola

- Serbatoi d'inchiostro
- Testina di stampa
- Adattatore CA
- CD-ROM di installazione per Windows
- Cavo di alimentazione
- Informazioni importanti e sulla sicurezza
- Cavo USB
- Guida Rapida (questo manuale)

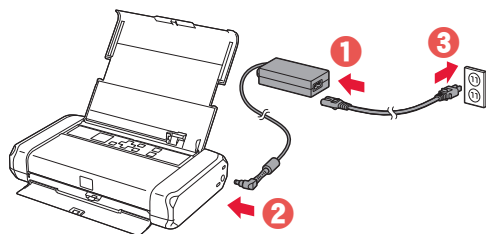
## 2. Rimozione del materiale da imballaggio

- 1 Rimuovere e disfarsi di eventuale materiale da imballaggio e del nastro arancione.
- 2 Aprire ed estendere il coperchio del vassoio posteriore, quindi rimuovere il materiale di protezione e disfarsene.
  - Il coperchio dello slot di uscita della carta si apre automaticamente.



## 3. Accensione della stampante

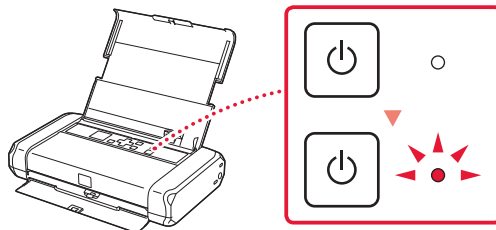
- 1 Collegare il cavo di alimentazione.



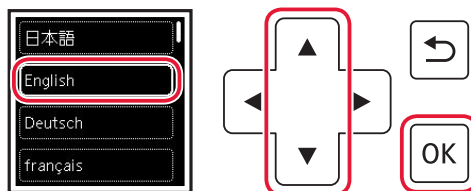
### Importante

In questa fase, non collegare altri cavi.

- 2 Tenere premuto il pulsante **ON** finché non si accende la spia **ON**.



- 3 Utilizzare i pulsanti **▲**, **▼** e **OK** per selezionare una lingua.



- 4 Premere il pulsante **OK**.

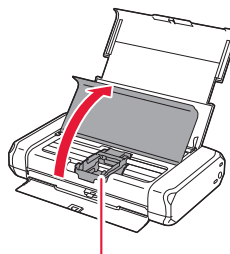


### Importante

Eseguire la scansione del codice QR per un video tutorial della procedura di impostazione.

## 4. Installazione della testina di stampa

- 1 Aprire il coperchio della testina di stampa.

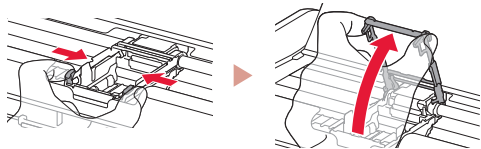


### Attenzione

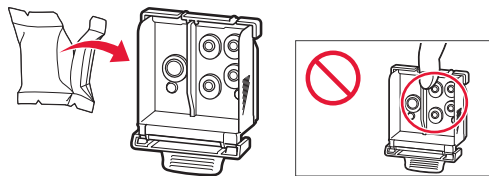
Non toccare il supporto della testina di stampa fino a quando non si ferma.

## Impostazione della stampante

- 2 Premere entrambe le linguette sulla leva di bloccaggio della testina di stampa verso l'interno per rilasciare il bloccaggio, quindi sollevare la leva con fermezza finché non scatta in posizione.



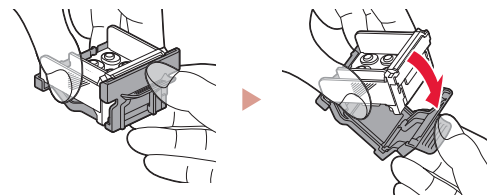
- 3 Rimuovere la testina di stampa dal pacchetto.



### Importante

Potrebbe esserci dell'inchiostro trasparente o dell'inchiostro colore chiaro sulla busta della testina di stampa - ciò non ha alcun effetto sulla qualità di stampa. Fare attenzione a non sporcarsi di inchiostro quando si maneggiano questi elementi.

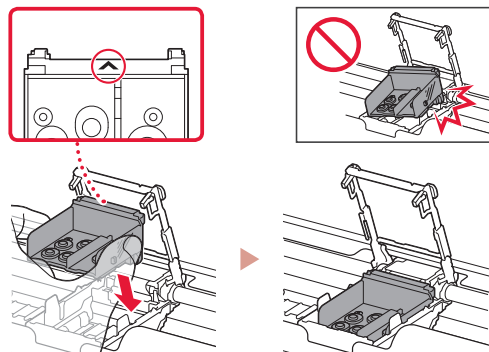
- 4 Rimuovere il cappuccio protettivo.



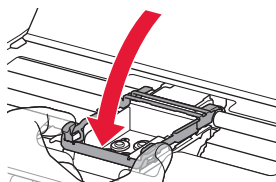
### Importante

Non toccare le aree mostrate nella figura. Altrimenti, la stampante potrebbe non stampare correttamente.

- 5 Inserire la testina di stampa nel supporto della testina di stampa in modo che il segno ▲ sia rivolto verso l'interno.



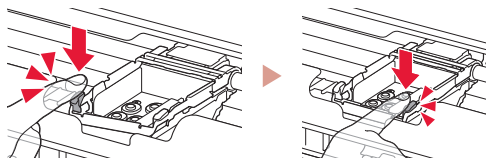
- 6 Tenere entrambe le linguette sulla leva di bloccaggio della testina di stampa, quindi abbassare la leva.



### Importante

Una volta installata la testina di stampa, non rimuoverla inutilmente.

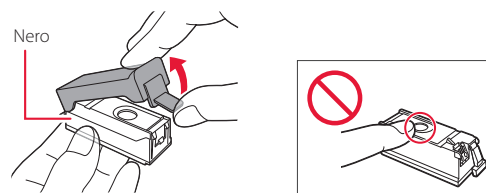
- 7 Per bloccare la leva di bloccaggio della testina di stampa, spingere la linguetta sinistra e poi quella destra finché non scattano in posizione.



## 5. Installazione dei serbatoi d'inchiostro

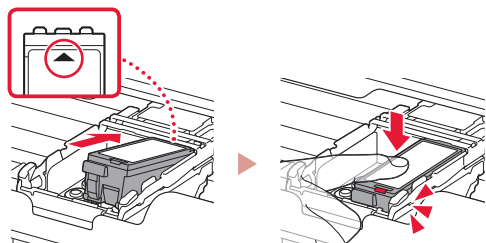


- 1 Rimuovere il coperchietto arancione dal serbatoio d'inchiostro del nero.

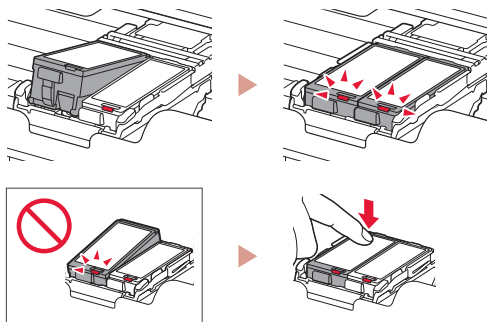


- 2 Installare il serbatoio d'inchiostro.

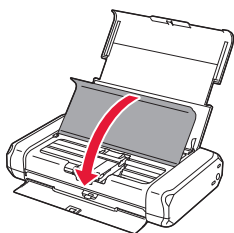
- Inserire il serbatoio d'inchiostro sul lato destro della testina di stampa in modo che il segno ▲ sia rivolto verso l'interno, quindi premere finché non si sente un clic.
- Controllare che la spia sul serbatoio d'inchiostro sia accesa. Se la spia non è accesa, premere il retro del serbatoio d'inchiostro.



- 3 Ripetere i passi da 1 a 2 e installare anche il serbatoio d'inchiostro del colore sul lato sinistro.



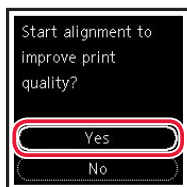
- 4 Chiudere il coperchio della testina di stampa.



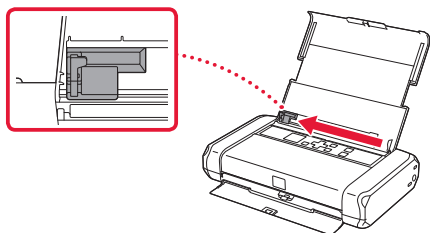
## 6. Caricamento della carta



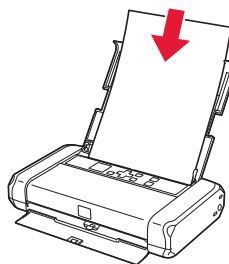
- 1 Premere il pulsante **OK**.



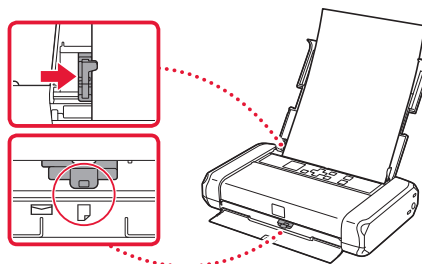
- 2 Far scorrere la guida della carta verso sinistra.



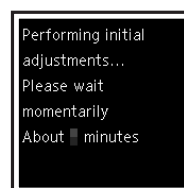
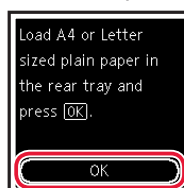
- 3 Caricare carta comune in formato Letter o A4 contro il margine destro con il lato di stampa rivolto verso l'alto.



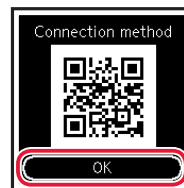
- 4 Allineare la guida della carta alla larghezza della carta, quindi controllare che la leva spessore carta sia rivolta verso destra.



- 5 Premere il pulsante **OK**.



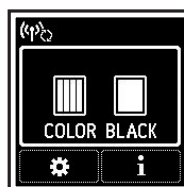
- 6 Premere il pulsante **OK**.



### »»» Importante

Eseguire la scansione del codice QR per un video tutorial della procedura di impostazione.

- 7 Verificare che venga visualizzata la schermata seguente.



### Quale periferica si sta connettendo?



Computer



Computer e  
smartphone



Smartphone

## 7-a

### Connessione a un computer

Se si utilizzano più computer, eseguire questi passaggi su ciascun computer.



- 1 Accedere al sito Web di Canon da un computer.

<https://ij.start.canon>



- 2 Selezionare  **Impostazione**.

- 3 Immettere il nome del modello della stampante e fare clic su **Vai**.

- Se richiesto, selezionare il paese o la regione.

- 4 Fare clic su **Avvio**.

- 5 Fare clic su **Se la stampante è già preparata, connettersi**.

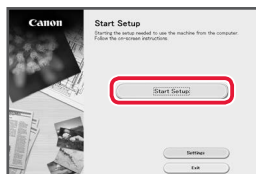
#### »»» Nota

Le seguenti procedure sono destinate agli utenti Windows.

- 6 Fare clic su **Scarica**.

- 7 Eseguire il file scaricato.

- 8 Fare clic su **Avvia impostazione (Start Setup)**.



- 9 Seguire le istruzioni visualizzate sullo schermo.

- Queste operazioni possono richiedere del tempo.
- Per connettersi anche a uno smartphone, vedere "7-b. Connessione a uno smartphone" a pagina 5.



#### Utilizzo del CD-ROM di installazione per Windows

Fare doppio clic su **EasySetup.exe** nel CD-ROM, quindi continuare dal passo 3. Se non si dispone di una connessione Internet, aprire la cartella **win** nel CD-ROM e fare doppio clic su **SETUP.exe**. Verrà installato il driver della stampante.

## 7-b

### Connessione a uno smartphone

Se si utilizzano più smartphone, eseguire questi passaggi su ciascuno smartphone.



Prima di iniziare, effettuare quanto segue.

- 1 Abilitare l'impostazione Wi-Fi sullo smartphone.
- 2 Connettere lo smartphone al router wireless (se si dispone di un router wireless).

Per ulteriori informazioni, fare riferimento ai manuali dello smartphone e del router wireless.

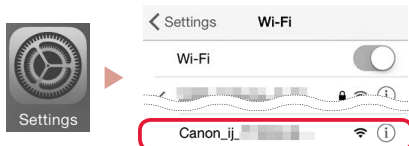
#### 1 Installare l'app "Canon PRINT Inkjet/SELPHY" sullo smartphone.

- Eseguire la scansione del codice QR sulla destra per accedere al sito Web di Canon e scaricare l'app.



#### 2 Aprire le impostazioni Wi-Fi dello smartphone. Toccare il nome di rete (SSID) che inizia con "Canon\_ij\_". Se "Canon\_ij\_" non appare, procedere al passo 3.

(Esempio di schermata iOS)



#### 3 Aprire l'app installata.



#### 4 Per aggiungere la stampante, attenersi alle istruzioni visualizzate nell'app.

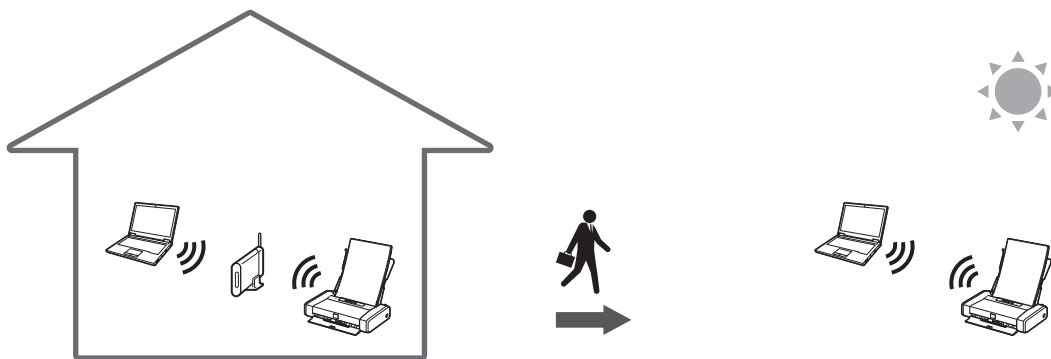
Una volta aggiunta la stampante, è possibile stampare dallo smartphone.

## Utilizzo della stampante senza un router wireless



Fare riferimento a **Stampa mentre sei fuori casa** in **Manuale online**.

Per utilizzare la stampante in un'area in cui non si ha accesso a Wi-Fi, è necessario modificare le impostazioni del computer o dello smartphone.



Di solito si utilizza un router wireless per connettere la stampante al computer o allo smartphone.

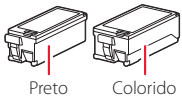
Quando non è disponibile un router wireless, è possibile connettere la stampante direttamente al computer o allo smartphone (**Wireless diretto**).



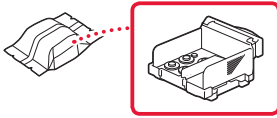
# Configurando a impressora

## 1. Conteúdo da Caixa

- Cartuchos de tinta



- Cabeça de impressão



- Adaptador CA

- CD-ROM de instalação para Windows

- Cabo de alimentação

- Informações Importantes e Sobre Segurança

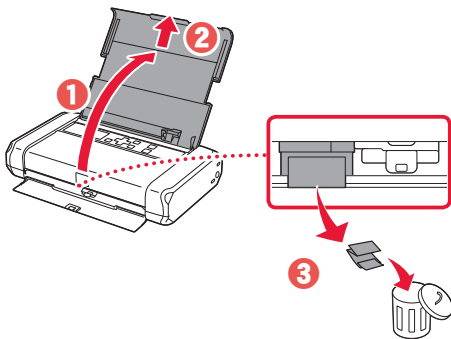
- Cabo USB

- Para Começar (este manual)

## 2. Removendo os materiais da embalagem



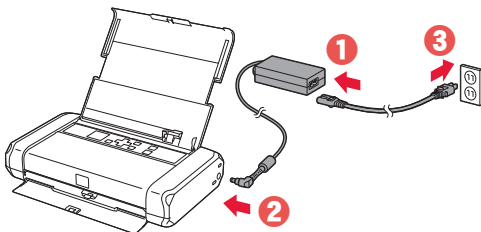
- 1 Remova e descarte quaisquer materiais de embalagem e a fita laranja.
- 2 Abra e estenda a tampa da bandeja traseira e, em seguida, remova e descarte o material de proteção.
  - A tampa do slot de saída do papel se abre automaticamente.



## 3. Ligando a Impressora



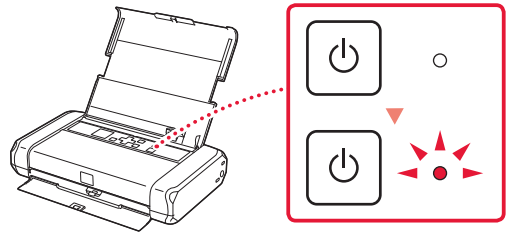
- 1 Conecte o cabo de alimentação.



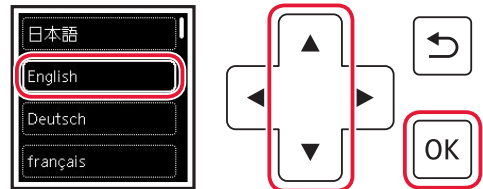
### ►►► Importante

Não conecte quaisquer outros cabos ainda.

- 2 Mantenha pressionado o botão **ATIVADO (ON)** até o indicador luminoso **ATIVADO (ON)** acender.



- 3 Use os botões ▲, ▼ e **OK** para selecionar um idioma.



- 4 Pressione o botão **OK**.



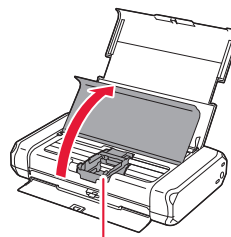
### ►►► Importante

Leia o Código QR para um tutorial em vídeo do procedimento de configuração.

## 4. Instalando a Cabeça de Impressão



- 1 Abra a tampa da cabeça de impressão.

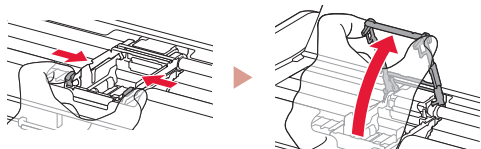


### ▲ Cuidado

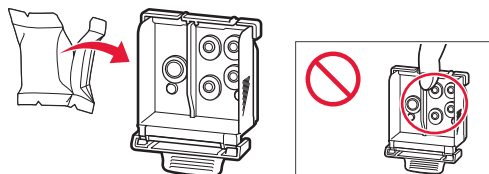
Não toque no suporte da cabeça de impressão antes de ele parar de se mover.

## Configurando a impressora

- 2 Pressione para dentro as duas linguetas da alavanca de bloqueio da cabeça de impressão para soltar a trava e, em seguida, eleve-a firmemente até que ela pare.



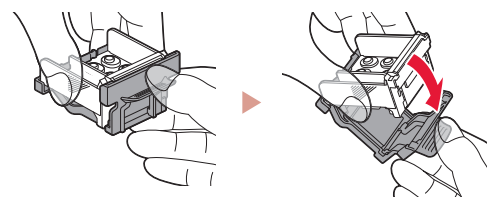
- 3 Remova a cabeça de impressão de seu pacote.



### ►►► Importante

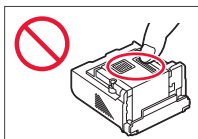
Pode ser que haja tinta transparente ou de cor clara no interior da embalagem em que a cabeça de impressão veio; isso não tem nenhum efeito na qualidade de impressão. Tenha cuidado para não se manchar com a tinta ao manusear esses itens.

- 4 Remova a tampa de proteção.

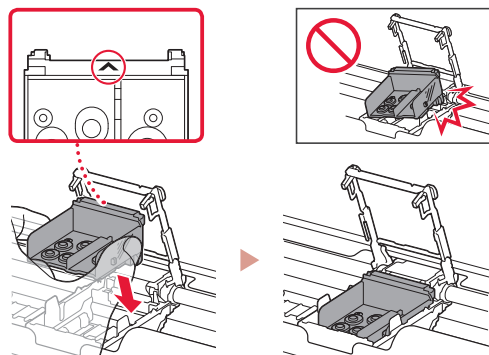


### ►►► Importante

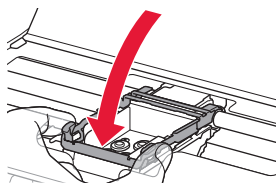
Não toque nas áreas mostradas na figura. Caso contrário, a impressora pode não imprimir corretamente.



- 5 Instale a cabeça de impressão no suporte da cabeça de impressão de modo que a marca ▲ esteja virada para dentro.



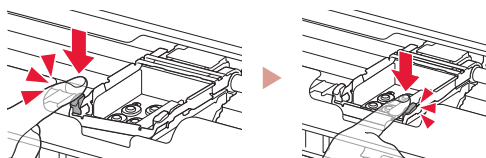
- 6 Segure as duas linguetas da alavanca de bloqueio da cabeça de impressão e, em seguida, abaixe-a.



### ►►► Importante

Depois que tiver instalado a cabeça de impressão, não remova-a desnecessariamente.

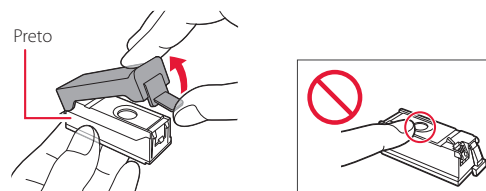
- 7 Para travar a alavanca de bloqueio da cabeça de impressão, empurre as linguetas da esquerda e da direita até que elas se encaixem no lugar.



## 5. Instalando os cartuchos de tinta

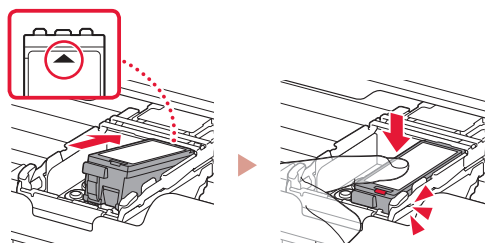


- 1 Retire a tampa laranja do cartucho de tinta preta.

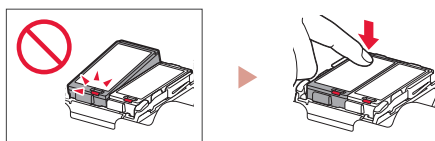
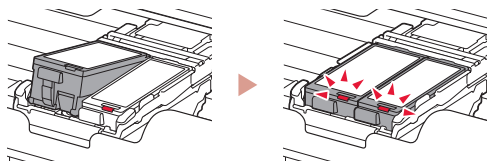


- 2 Instale o cartucho de tinta.

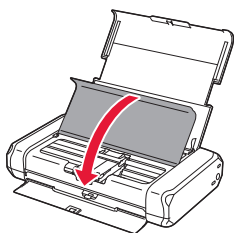
- Insira o cartucho de tinta no lado direito da cabeça de impressão de modo que a marca ▲ esteja virada para dentro e, em seguida, pressione-o até ouvir um clique.
- Verifique se o indicador luminoso no cartucho de tinta está aceso. Se o indicador não estiver aceso, pressione a parte traseira do cartucho de tinta.



- 3 Repita as etapas 1 a 2 e instale o cartucho de tinta colorido também, no lado esquerdo.



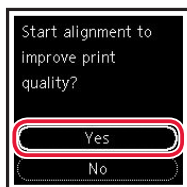
- 4 Feche a tampa da cabeça de impressão.



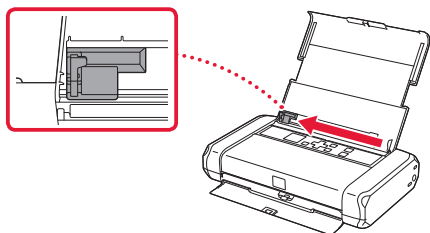
## 6. Colocando papel



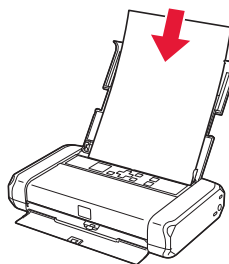
- 1 Pressione o botão **OK**.



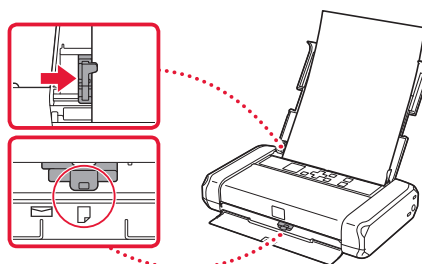
- 2 Deslize a guia do papel para a esquerda.



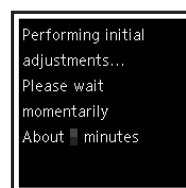
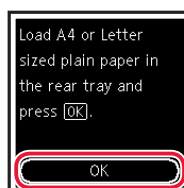
- 3 Coloque o papel Letter comum ou tamanho A4 contra a borda direita com o lado a ser impresso voltado para cima.



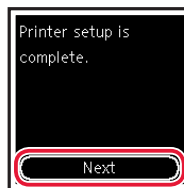
- 4 Alinhe a guia do papel para a largura do papel e verifique se o alavanca de espessura do papel está virada para a direita.



- 5 Pressione o botão **OK**.



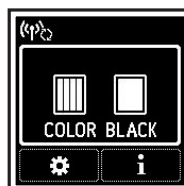
- 6 Pressione o botão **OK**.



### »»» Importante

Leia o Código QR para um tutorial em vídeo do procedimento de configuração.

- 7 Verifique se a tela a seguir aparece.



## Configurando a impressora

### Qual dispositivo você está conectando?



Computador



Computador e  
smartphone



Smartphone

## 7-a

### Conectando a um Computador

Se você estiver usando vários computadores, execute estas etapas em cada computador.



- 1 Acesse o site Canon de um computador.

<https://ij.start.canon>



- 2 Selecione  **Configurar**.

- 3 Insira o nome do modelo da sua impressora e clique em **Ir**.

- Se solicitado, selecione seu país ou região.

- 4 Clique em **Iniciar**.

- 5 Clique em **Se você já tiver preparado a sua impressora, vá para Conectar**.

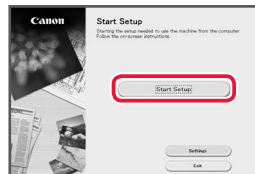
#### ▶▶▶ Nota

As etapas a seguir são para usuários do Windows.

- 6 Clique em **Download**.

- 7 Execute o arquivo baixado.

- 8 Clique em **Iniciar configuração (Start Setup)**.



- 9 Siga as instruções na tela.

- Estas operações podem levar algum tempo.
- Para conectar a um smartphone também, consulte "7-b. Conectando a um smartphone" na página 5.



Usando o CD-ROM de instalação para Windows

Clique duas vezes em **EasySetup.exe** no CD-ROM e, em seguida, continue a partir da etapa 3. Se você não tiver uma conexão com a internet, abra a pasta **win** no CD-ROM clique duas vezes em **SETUP.exe**. Isso instalará o driver da impressora.

## 7-b

### Conectando a um smartphone

Se você estiver usando vários smartphones, execute estas etapas em cada smartphone.



Prepare o seguinte antes de iniciar.

- 1 Ative a configuração Wi-Fi no seu smartphone.
- 2 Conecte seu smartphone ao roteador sem fio (se você tiver um roteador sem fio).

Consulte os manuais do seu smartphone e do seu roteador sem fio para obter mais detalhes.

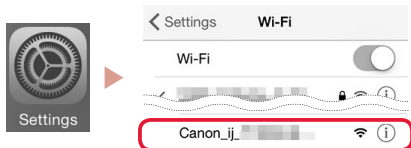
#### 1 Instale o aplicativo "Canon PRINT Inkjet/SELPHY" no seu smartphone.

- Leia o código QR exibido à direita para acessar o site da Canon e fazer download do aplicativo.



#### 2 Abra as configurações do seu Wi-Fi smartphone. Toque no nome da rede (SSID) que começa com "Canon\_ij\_". Se "Canon\_ij\_" não aparecer, prossiga para a etapa 3.

(Exemplo da tela do iOS)



#### 3 Abra o aplicativo instalado.



#### 4 Siga as instruções na tela do aplicativo para adicionar sua impressora.

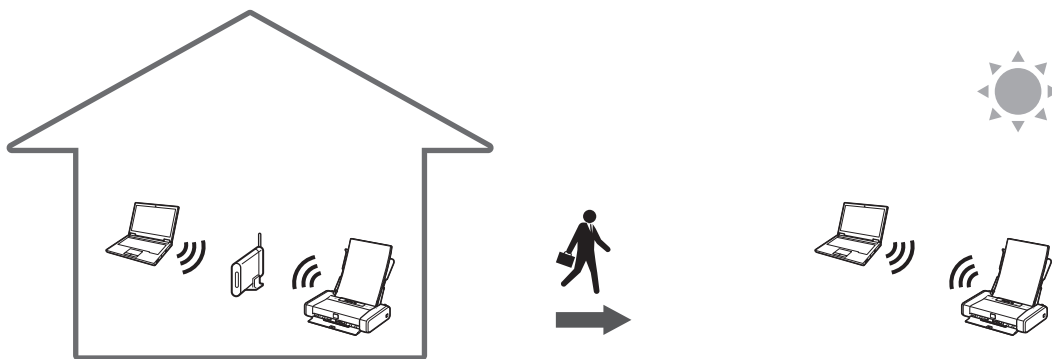
Depois que você adicionar a impressora, poderá imprimir do seu smartphone.

## Usando a impressora sem um roteador sem fio



Consulte **Imprimir quando não estiver em casa** no **Manual On-line**.

Para usar a impressora em uma área na qual você não tem acesso a Wi-Fi, é necessário alterar as configurações do seu computador ou smartphone.



Você, normalmente, usará um roteador sem fio para conectar sua impressora ao computador ou smartphone.

Quando não houver disponibilidade de um roteador sem fio, você poderá conectar sua impressora diretamente ao computador ou smartphone (**Conexão direta sem fio**).

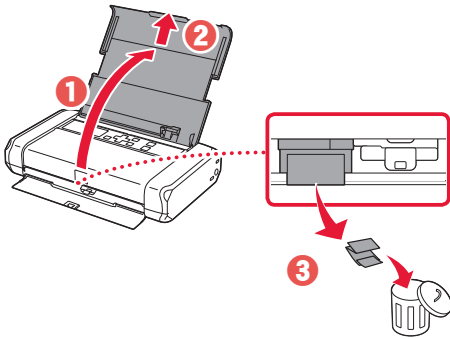
# Instalación de la impresora

## 1. Contenido de la caja

- Depósitos de tinta
  - Negro
  - Color
- Cabezal de impresión
- Adaptador de CA
- Cable de alimentación
- Cable USB
- CD-ROM de instalación para Windows
- Información de seguridad e información importante
- Guía de inicio (este manual)

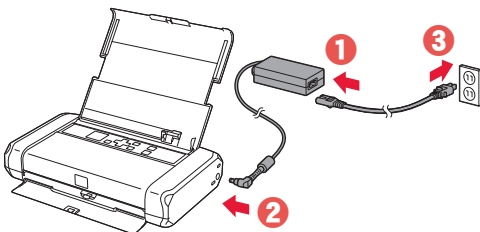
## 2. Retirar los materiales de protección

- 1 Retire y tire los materiales de protección y la cinta naranja.
- 2 Abra y extienda la cubierta de la bandeja posterior y, a continuación retire y deseche el material de protección.
  - La cubierta de la ranura de salida del papel se abre automáticamente.



## 3. Encender la impresora

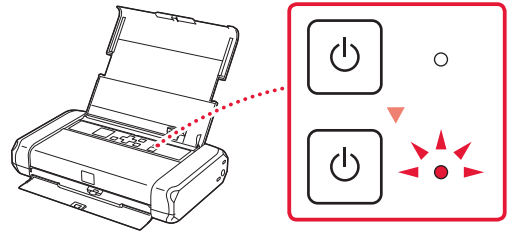
- 1 Conecte el cable de alimentación.



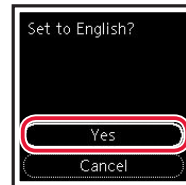
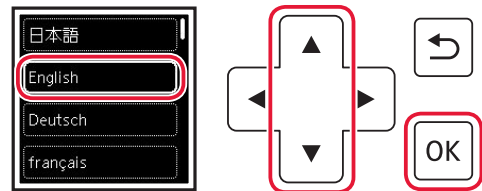
### Importante

En este momento, no conecte ningún otro cable.

- 2 Pulse el botón **ACTIVADO (ON)** y manténgalo pulsado hasta que se encienda la luz **ACTIVADO (ON)**.



- 3 Utilice los botones **▲**, **▼** y **OK** para seleccionar un idioma.



- 4 Pulse el botón **OK**.

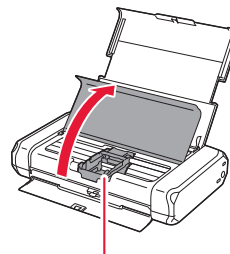


### Importante

Escanee el código QR para ver un tutorial en vídeo sobre el procedimiento de configuración.

## 4. Instalar el cabezal de impresión

- 1 Abra la cubierta del cabezal de impresión.

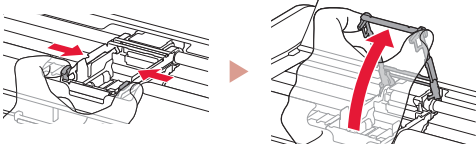


### Precaución

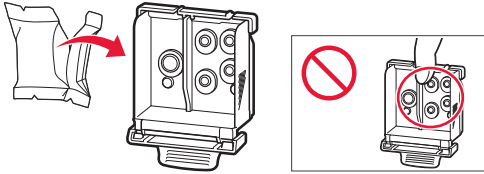
No toque el soporte del cabezal de impresión hasta que deje de moverse.

## Instalación de la impresora

- 2 Presione hacia dentro ambas lengüetas de la palanca de bloqueo del cabezal de impresión para liberar el bloqueo y, a continuación, levántela con firmeza hasta que se detenga.



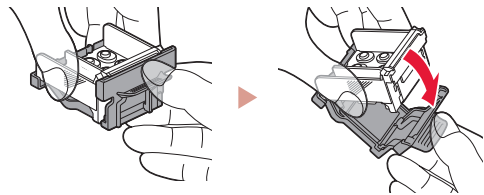
- 3 Saque el cabezal de impresión de su paquete.



### Importante

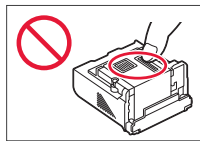
Puede haber algo de tinta transparente o de color claro en el interior de la bolsa en la que viene el cabezal de impresión; esto no tiene ningún efecto en la calidad de impresión. Tenga cuidado de no mancharse de tinta al manipular estos elementos.

- 4 Retire la tapa protectora.

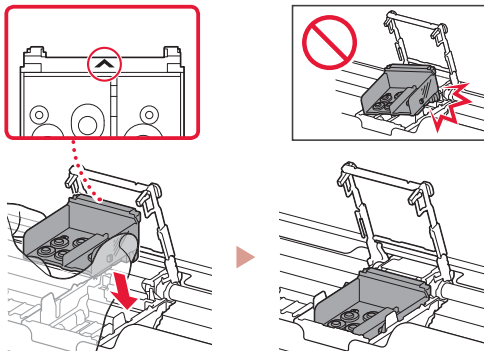


### Importante

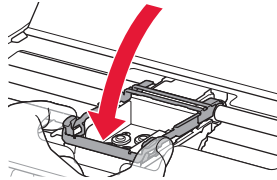
No toque las áreas que se muestran en la imagen. Si lo hace, puede que la impresora no imprima correctamente.



- 5 Coloque el cabezal de impresión en el soporte del cabezal de impresión de forma que la marca ▲ mire hacia dentro.



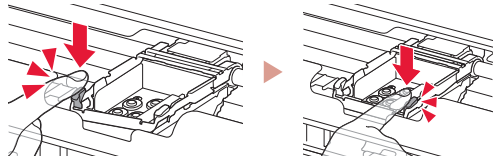
- 6 Sujete ambas lengüetas en la palanca de bloqueo del cabezal de impresión y, a continuación, bájela.



### Importante

Cuando haya instalado el cabezal de impresión, no lo retire innecesariamente.

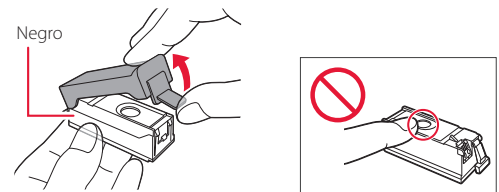
- 7 Para bloquear la palanca de bloqueo del cabezal de impresión, presione la lengüeta izquierda y después la derecha hasta que encajen en su sitio.



## 5. Instalación de los depósitos de tinta

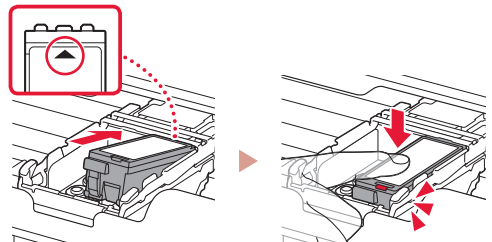


- 1 Retire la tapa naranja del depósito de tinta negro.



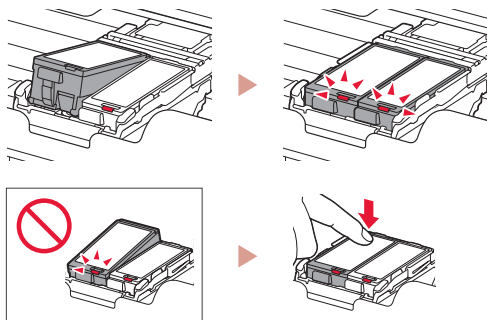
- 2 Instale el depósito de tinta.

- Inserte el depósito de tinta en el lado derecho del cabezal de impresión de forma que la marca ▲ mire hacia dentro y, a continuación, presiónelo hasta que encaje.
- Compruebe que la luz del depósito de tinta está encendida. Si la luz no está encendida, presione la parte posterior del depósito de tinta.

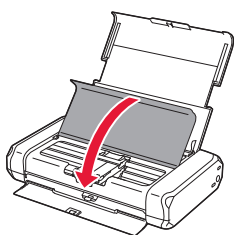




- 3 Repita los pasos del 1 al 2 e instale el depósito de tinta de color también en el lado izquierdo.



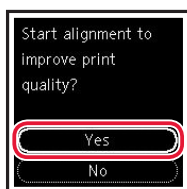
- 4 Cierre la cubierta del cabezal de impresión.



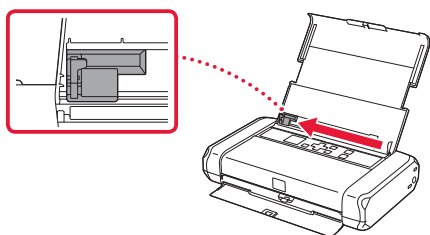
## 6. Carga del papel



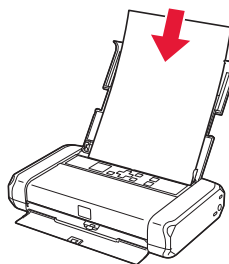
- 1 Pulse el botón **OK**.



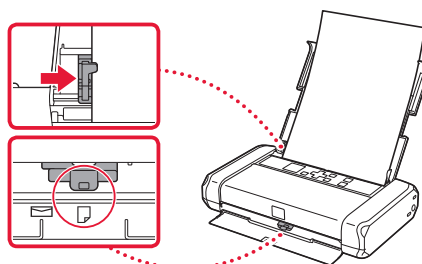
- 2 Deslice la guía del papel hacia la izquierda.



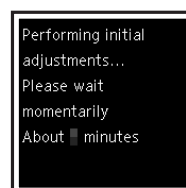
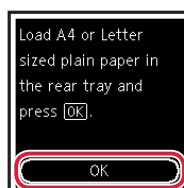
- 3 Cargue papel normal de tamaño Carta o A4 contra el borde derecho con el lado de impresión hacia arriba.



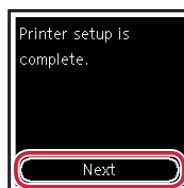
- 4 Alinee la guía del papel con el ancho del papel y, a continuación, compruebe que la palanca de grosor del papel esté colocada a la derecha.



- 5 Pulse el botón **OK**.



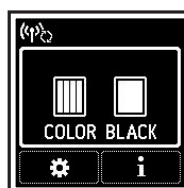
- 6 Pulse el botón **OK**.



### »»» Importante

Escanee el código QR para ver un tutorial en vídeo sobre el procedimiento de configuración.

- 7 Compruebe que aparezca la siguiente pantalla.



## ¿Qué dispositivo va a conectar?



Ordenador



Ordenador y  
teléfono inteligente



Teléfono inteligente

## 7-a

### Conectar al ordenador

Si utiliza varios ordenadores, realice estos pasos en cada ordenador.



- 1 Acceda al sitio web de Canon desde un ordenador.

<https://ij.start.canon>



- 2 Seleccione  **Configurar**.

- 3 Escriba el nombre del modelo de su impresora y haga clic en **Ir**.
  - Si se le solicita, seleccione su país o región.

- 4 Haga clic en **Iniciar**.

- 5 Haga clic en **Si ya ha preparado la impresora, vaya a Conectar**.

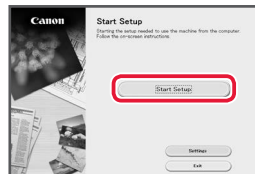
#### »»» Nota

Los siguientes pasos son para usuarios de Windows.

- 6 Haga clic en **Descargar**.

- 7 Ejecute el archivo descargado.

- 8 Haga clic en **Iniciar configuración (Start Setup)**.



- 9 Siga las instrucciones que aparezcan en pantalla.

- Estas operaciones pueden llevar algún tiempo.
- Para conectar con un teléfono inteligente también, consulte "7-b. Conexión con un teléfono inteligente" en la página 5.



#### Uso del CD-ROM de instalación para Windows

Haga doble clic en **EasySetup.exe** en el CD-ROM y después continúe desde el paso 3. Si no tiene una conexión a Internet, abra la carpeta **win** en el CD-ROM y haga doble clic en **SETUP.exe**. Esto instalará el controlador de la impresora.

## 7-b

### Conexión con un teléfono inteligente

Si utiliza varios teléfonos inteligentes, realice estos pasos en cada teléfono inteligente.



Prepare lo siguiente antes de empezar.

- 1 Active la configuración de Wi-Fi en su teléfono inteligente.
  - 2 Conecte su teléfono inteligente al router inalámbrico (si tiene un router inalámbrico).
- Consulte los manuales de su teléfono inteligente y del router inalámbrico para obtener más detalles.

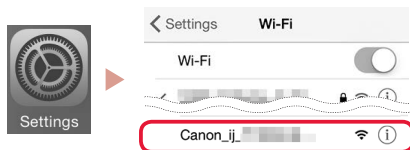
#### 1 Instale la aplicación "Canon PRINT Inkjet/SELPHY" en su teléfono inteligente.

- Escanee el código QR que se muestra a la derecha para acceder al sitio web de Canon y, a continuación, descargue la aplicación.



#### 2 Abra la configuración de Wi-Fi de su teléfono inteligente. Toque el nombre de red (SSID) que empieza con "Canon\_ij\_". Si no aparece "Canon\_ij\_", vaya al paso 3.

(Ejemplo de la pantalla de iOS)



#### 3 Abra la aplicación instalada.



#### 4 Siga las instrucciones en pantalla de la aplicación para agregar su impresora.

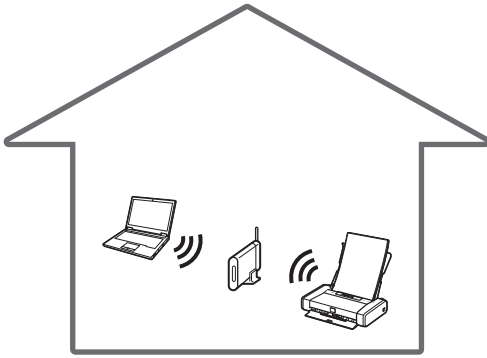
Cuando haya agregado la impresora, podrá imprimir desde su teléfono inteligente.

# Uso de la impresora sin un router inalámbrico

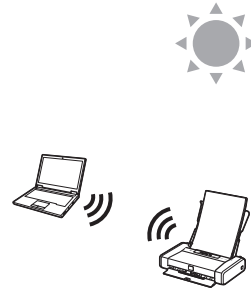


Consulte **Imprimir fuera de casa** en el **Manual en línea**.

Para usar la impresora en un área donde no tiene acceso a Wi-Fi, debe cambiar la configuración de su ordenador o teléfono inteligente.



Normalmente se utiliza un router inalámbrico para conectar la impresora al ordenador o al teléfono inteligente.

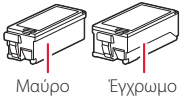


Cuando un router inalámbrico no está disponible, puede conectar la impresora directamente al ordenador o al teléfono inteligente (**Conexión directa inalám.**).

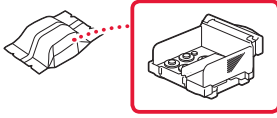
# Ρύθμιση του εκτυπωτή

## 1. Περιεχόμενα συσκευασίας

- Δοχεία μελάνης



- Κεφαλή εκτύπωσης

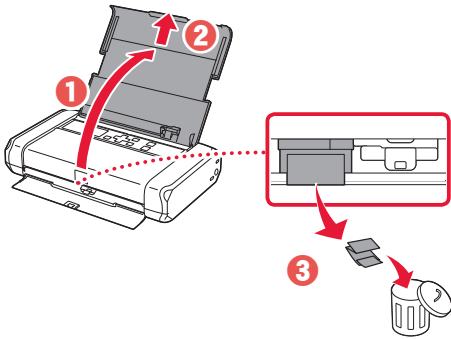


- Προσαρμογέας AC
- CD-ROM εγκατάστασης για Windows
- Καλώδιο τροφοδοσίας
- Πληροφορίες για την ασφάλεια και σημαντικές πληροφορίες
- Καλώδιο USB
- Ξεκινώντας (αυτό το εγχειρίδιο)

## 2. Αφαίρεση υλικών συσκευασίας



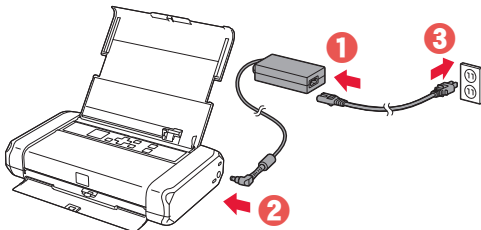
- 1 Αφαιρέστε και απορρίψτε τυχόν υλικά συσκευασίας και πορτοκαλί ταινία.
- 2 Ανοίξτε και εκτείnete το κάλυμμα πίσω θήκης και στη συνέχεια αφαιρέστε και απορρίψτε το προστατευτικό υλικό.
  - Το κάλυμμα υποδοχής εξόδου χαρτιού ανοίγει αυτόματα.



## 3. Ενεργοποίηση του εκτυπωτή



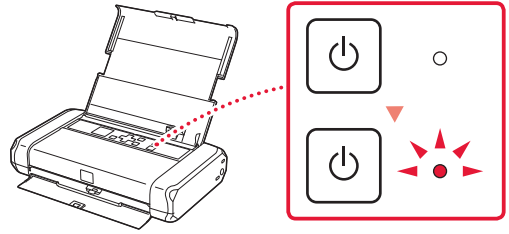
- 1 Συνδέστε το καλώδιο τροφοδοσίας.



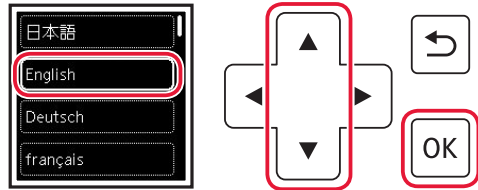
### ▶▶▶ Σημαντικό

Προς το παρόν, μη συνδέσετε άλλα καλώδια.

- 2 Πατήστε παρατεταμένα το κουμπί **ON** μέχρι να ανάψει η λυχνία **ON**.



- 3 Χρησιμοποιήστε τα κουμπιά **▲**, **▼** και **OK** για να επιλέξετε μια γλώσσα.



- 4 Πατήστε το κουμπί **OK**.



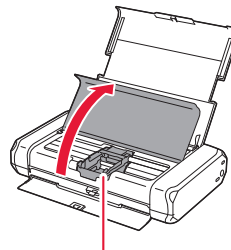
### ▶▶▶ Σημαντικό

Σαρώστε τον κωδικό QR για να δείτε ένα βίντεο με οδηγίες σχετικά με τη διαδικασία ρύθμισης.

## 4. Εγκατάσταση της κεφαλής εκτύπωσης



- 1 Ανοίξτε το κάλυμμα κεφαλής εκτύπωσης.

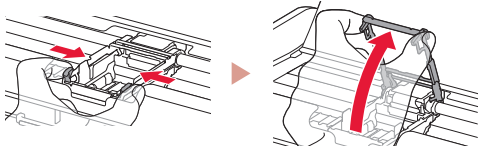


### ⚠ Προσοχή

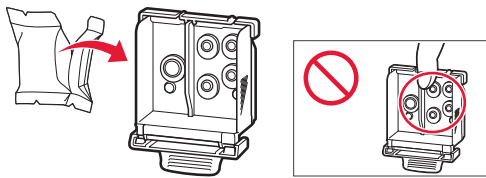
Μην αγγίζετε τη θήκη κεφαλής εκτύπωσης μέχρι να σταματήσει να μετακινείται.

## Ρύθμιση του εκτυπωτή

- 2 Πατήστε προς τα μέσα και τις δύο πλευρές του μοχλού ασφάλισης κεφαλής εκτύπωσης για να ελευθερώσετε την ασφάλιση και στη συνέχεια συνεχίστε να σπρώχνετε τον σταθερά μέχρι να σταματήσει.



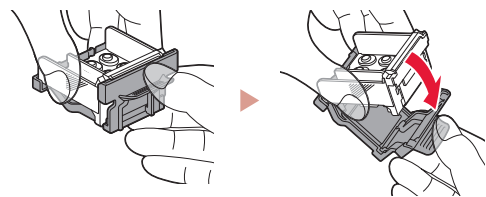
- 3 Βγάλτε την κεφαλή εκτύπωσης από τη συσκευασία της.



### Σημαντικό

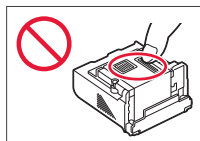
Ενδέχεται να υπάρχει διάφανο ή απαλό έγχρωμο μελάνι στο εσωτερικό της σακούλας μέσα στην οποία έρχεται η κεφαλή εκτύπωσης - αυτό δεν επηρεάζει την ποιότητα εκτύπωσης. Προσέχετε να μη λερωθείτε με μελάνη όταν χειρίζεστε αυτά τα αντικείμενα.

- 4 Αφαιρέστε το προστατευτικό κάλυμμα.

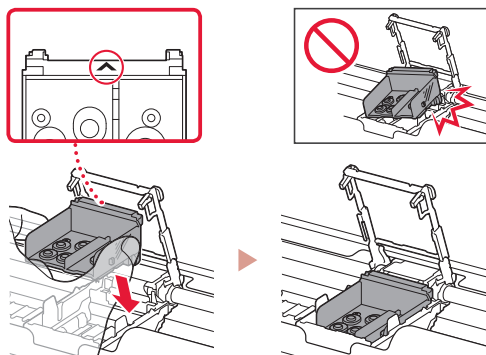


### Σημαντικό

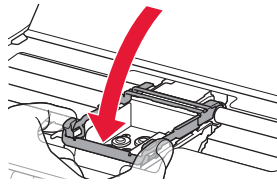
Μην αγγίζετε τις περιοχές που υποδεικνύονται στην εικόνα. Διαφορετικά, ο εκτυπωτής ενδέχεται να μην εκτυπώνει σωστά.



- 5 Τοποθετήστε την κεφαλή εκτύπωσης στη θήκη κεφαλής εκτύπωσης ώστε το σημάδι ▲ να κοιτάζει προς τα μέσα.



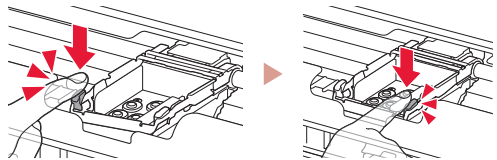
- 6 Κρατήστε και τις δύο πλευρές του μοχλού ασφάλισης κεφαλής εκτύπωσης και στη συνέχεια κατεβάστε τον.



### Σημαντικό

Αφού τοποθετήσετε την κεφαλή εκτύπωσης, μην την αφαιρέσετε χωρίς λόγο.

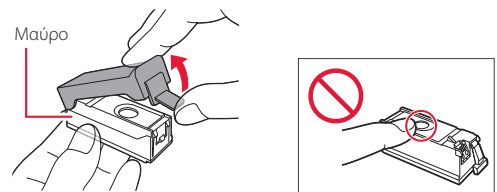
- 7 Για να ασφαλίσετε τον μοχλό ασφάλισης κεφαλής εκτύπωσης, πιέστε την αριστερή και έπειτα τη δεξιά πλευρά μέχρι να ασφαλισουν στη θέση τους.



## 5. Εγκατάσταση των δοχείων μελάνης

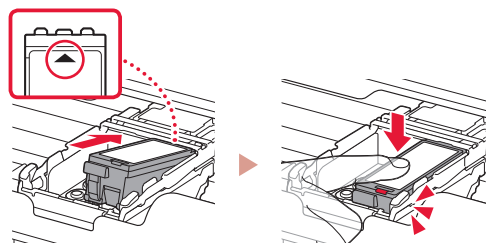


- 1 Αφαιρέστε το πορτοκαλί κάλυμμα από το μαύρο δοχείο μελάνης.

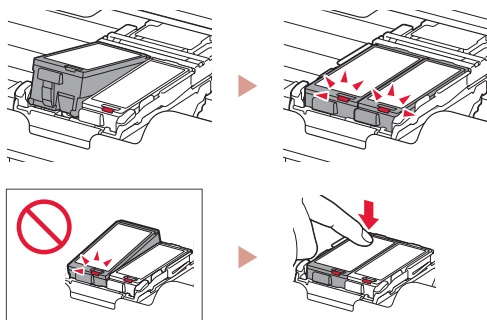


- 2 Εγκαταστήστε το δοχείο μελάνης.

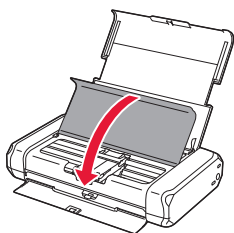
- Τοποθετήστε το δοχείο μελάνης στη δεξιά πλευρά της κεφαλής εκτύπωσης ώστε το σημάδι ▲ να κοιτάζει προς τα μέσα και στη συνέχεια πιέστε το προς τα κάτω μέχρι να κάνει κλικ.
- Ελέγξτε ότι η λυχνία στο δοχείο μελάνης είναι αναμμένη. Αν η λυχνία δεν είναι αναμμένη, πιέστε προς τα κάτω στην πίσω πλευρά του δοχείου μελάνης.



- 3 Επαναλάβετε τα βήματα 1 έως 2 και τοποθετήστε και το έγχρωμο δοχείο μελάνης στην αριστερή πλευρά.



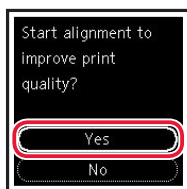
- 4 Κλείστε το κάλυμμα κεφαλής εκτύπωσης.



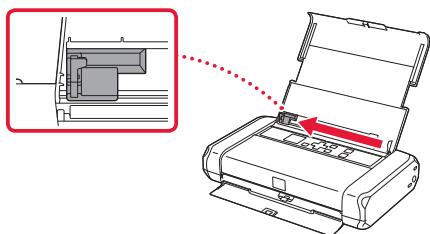
## 6. Τοποθέτηση χαρτιού



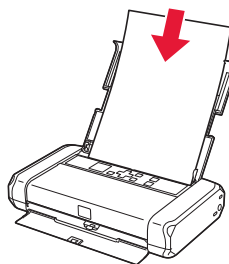
- 1 Πατήστε το κουμπί **OK**.



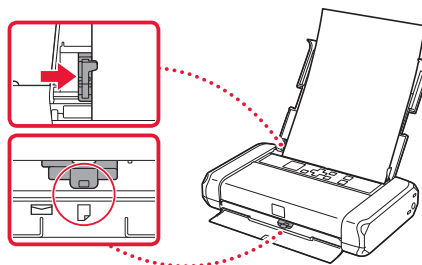
- 2 Σύρετε τον οδηγό χαρτιού προς τα αριστερά.



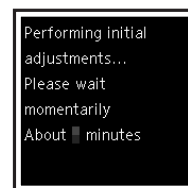
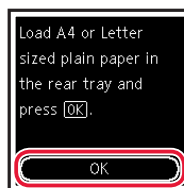
- 3 Τοποθετήστε απλό χαρτί μεγέθους Letter ή A4 έτσι ώστε να ακουμπά στη δεξιά πλευρά και με την πλευρά εκτύπωσης στραμμένη προς τα επάνω.



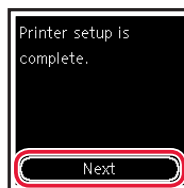
- 4 Ευθυγραμμίστε τον οδηγό χαρτιού με το πλάτος του χαρτιού και στη συνέχεια ελέγξτε ότι ο μοχλός πάχους χαρτιού είναι τοποθετημένος στα δεξιά.



- 5 Πατήστε το κουμπί **OK**.



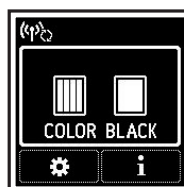
- 6 Πατήστε το κουμπί **OK**.



### »»» Σημαντικό

Σαρώστε τον κωδικό QR για να δείτε ένα βίντεο με οδηγίες σχετικά με τη διαδικασία ρύθμισης.

- 7 Βεβαιωθείτε ότι εμφανίζεται η ακόλουθη οθόνη.



## Τι συσκευή σκοπεύετε να συνδέσετε;



Υπολογιστής



Υπολογιστής και  
smartphone



Smartphone

## 7-a

### Σύνδεση με υπολογιστή

Εάν χρησιμοποιείτε πολλούς υπολογιστές, εκτελέστε αυτά τα βήματα σε κάθε υπολογιστή.



- 1 Μεταβείτε στη διαδικτυακή τοποθεσία της Canon από έναν υπολογιστή.

<https://ij.start.canon>



- 2 Επιλέξτε  **Εγκατάσταση**.

- 3 Καταχωρίστε το όνομα μοντέλου του εκτυπωτή σας και κάντε κλικ στην επιλογή **Μετάβαση**.

- Αν ζητηθεί, επιλέξτε τη χώρα ή την περιοχή σας.

- 4 Κάντε κλικ στο **Έναρξη**.

- 5 Κάντε κλικ στο **Αν έχετε ήδη προετοιμάσει τον εκτυπωτή σας, μεταβείτε στη Σύνδεση**.

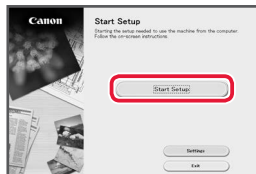
#### »»» Σημείωση

Τα παρακάτω βήματα αφορούν τους χρήστες Windows.

- 6 Κάντε κλικ στο **Λήψη**.

- 7 Εκτελέστε το ληφθέν αρχείο.

- 8 Κάντε κλικ στο **Εκκίνηση ρύθμισης (Start Setup)**.



- 9 Ακολουθήστε τις οδηγίες στην οθόνη.

- Αυτές οι λειτουργίες ενδέχεται να χρειαστούν κάποιο χρόνο.
- Για να συνδέσετε και σε smartphone, ανατρέξτε στην ενότητα «7-b. Σύνδεση με Smartphone» στη σελίδα 5.



#### Χρήση του CD-ROM εγκατάστασης για Windows

Κάντε διπλό κλικ στο αρχείο **EasySetup.exe** που υπάρχει στο CD-ROM και, έπειτα, συνεχίστε από το βήμα 3. Αν δεν έχετε σύνδεση internet, ανοίξτε το φάκελο **win** στο CD-ROM και κάντε διπλό κλικ στο αρχείο **SETUP.exe**. Αυτή η ενέργεια θα εγκαταστήσει το πρόγραμμα οδήγησης του εκτυπωτή.



## 7-b Σύνδεση με Smartphone

Εάν χρησιμοποιείτε πολλά smartphone, εκτελέστε αυτά τα βήματα σε κάθε smartphone.



Προετοιμάστε τα εξής προτού ξεκινήσετε.

- 1 Ενεργοποιήστε τη ρύθμιση Wi-Fi στο smartphone σας.
  - 2 Συνδέστε το smartphone σας στον ασύρματο δρομολογητή (εάν έχετε ασύρματο δρομολογητή).
- Για περισσότερες λεπτομέρειες, ανατρέξτε στα εγχειρίδια του smartphone και του ασύρματου δρομολογητή.

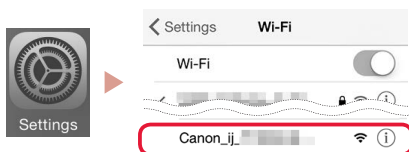
### 1 Εγκαταστήστε την εφαρμογή «Canon PRINT Inkjet/SELPHY» στο smartphone σας.

- Για πρόσβαση στην τοποθεσία web της Canon, σαρώστε τον κωδικό QR που εμφανίζεται στα δεξιά και, έπειτα, πραγματοποιήστε λήψη της εφαρμογής.



### 2 Ανοίξτε τις ρυθμίσεις Wi-Fi του smartphone σας. Πατήστε το όνομα δικτύου (SSID) που ξεκινά με «Canon\_ij\_». Αν το όνομα «Canon\_ij\_» δεν εμφανίζεται, συνεχίστε στο βήμα 3.

(Παράδειγμα της οθόνης iOS)



### 3 Ανοίξτε την εγκατεστημένη εφαρμογή.



### 4 Ακολουθήστε τις οδηγίες που εμφανίζονται στην οθόνη της εφαρμογής για να προσθέσετε τον εκτυπωτή σας.

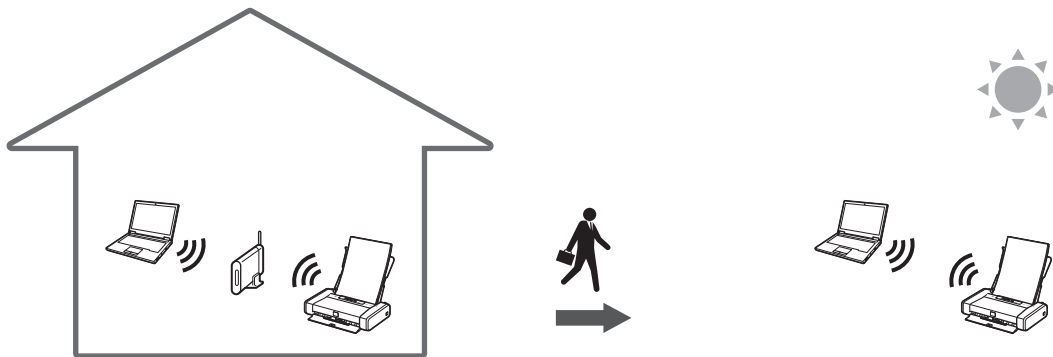
Αφού προσθέσετε τον εκτυπωτή σας, μπορείτε πλέον να εκτυπώνετε από το smartphone σας.

# Χρήση του εκτυπωτή σας χωρίς ασύρματο δρομολογητή



Ανατρέξτε στο **Εκτυπώστε όταν δε βρίσκεστε σπίτι** στο **Εγχειρίδιο Online**.

Για να χρησιμοποιήσετε τον εκτυπωτή σε περιοχή που δεν έχετε πρόσβαση σε Wi-Fi, πρέπει να αλλάξετε τις ρυθμίσεις στον υπολογιστή ή το smartphone σας.



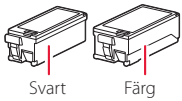
Συνήθως θα χρησιμοποιείτε έναν ασύρματο δρομολογητή για να συνδέσετε τον εκτυπωτή σας στον υπολογιστή ή το smartphone σας.

Όταν δεν υπάρχει διαθέσιμος ασύρματος δρομολογητής, μπορείτε να συνδέσετε τον εκτυπωτή σας άμεσα στον υπολογιστή ή το smartphone σας (**Ασύρματη άμεση σύνδεση**).

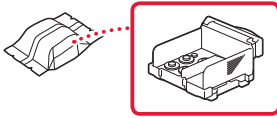
# Ställa in skrivaren

## 1. Boxens innehåll

- Bläckbehållare



- Skrivhuvud



- Nätdapter

- Installations-CD för Windows

- Strömkabel

- Information om säkerhet och annan viktig information

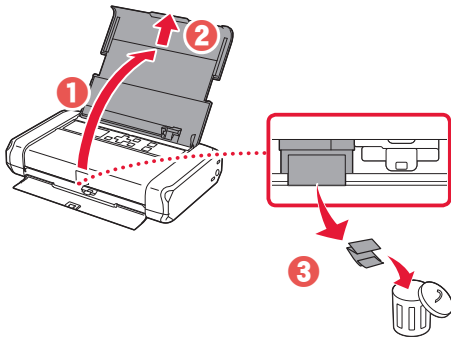
- USB-kabel

- Uppstartsguide (denna handbok)

## 2. Ta bort förpackningsmaterial



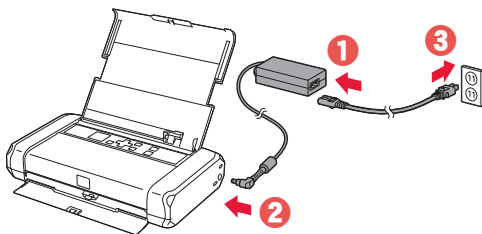
- 1 Ta bort och kassera eventuellt förpackningsmaterial och orange tejp.
- 2 Öppna och dra ut det bakre fackets lock och ta sedan bort och kassera skyddsmaterialet.
  - Pappersutmatningsfackets lock öppnas automatiskt.



## 3. Slå på skrivaren



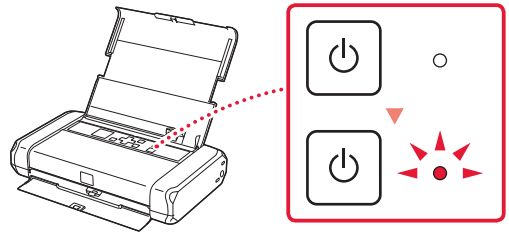
- 1 Anslut strömkabeln.



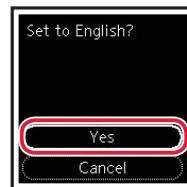
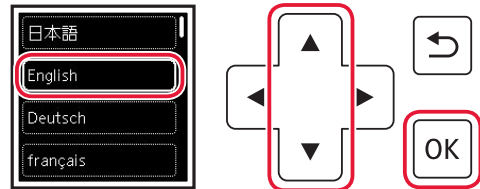
►►► **Viktigt!**

Anslut inga andra kablar än strömkabeln ännu.

- 2 Tryck och håll in **PÅ (ON)**-knappen tills **PÅ (ON)**-lampan tänds.



- 3 Använd knapparna ▲, ▼ och **OK** för att välja ett språk.



- 4 Tryck på **OK**.



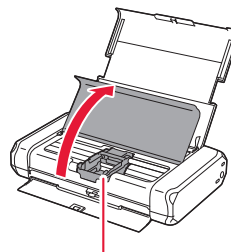
►►► **Viktigt!**

Skanna QR-koden för videoinstruktioner för installationsproceduren.

## 4. Installera skrivhuvudet



- 1 Öppna locket för skrivhuvudet.

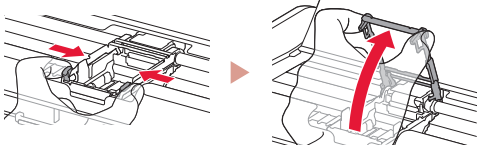


▲ **Försiktighet**

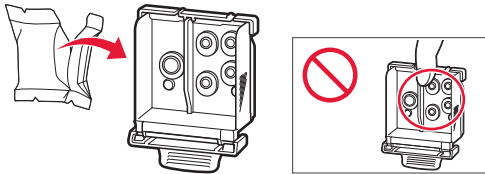
Rör inte hållaren för skrivhuvudet förrän den slutar röra sig.

## Ställa in skrivaren

- 2 Tryck in båda flikarna på låsspaken för skrivhuvudet för att låsa upp, och lyft den sedan tills det tar stopp.



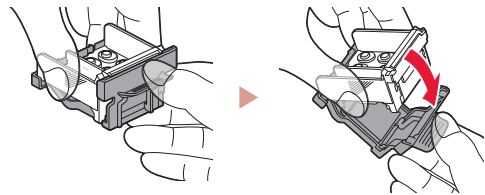
- 3 Ta ut skrivhuvudet ur förpackningen.



### Viktigt!

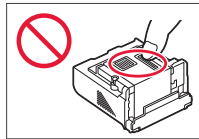
Det kan finnas genomskinligt eller ljusst färgat bläck på insidan av påsen som skrivhuvudet levereras i. Det påverkar inte utskriftskvaliteten. Var försiktig så att du inte får bläck på dig när du hanterar dessa delar.

- 4 Ta bort skyddslocket.

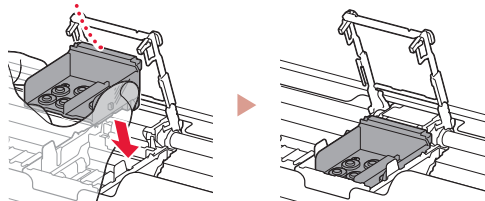


### Viktigt!

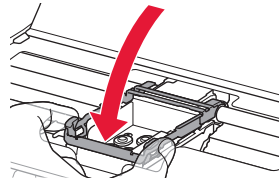
Rör inte områdena som visas på bilden. Annars kanske inte skrivaren fungerar korrekt.



- 5 Sätt i skrivhuvudet i hållaren för skrivhuvudet med ▲-markeringen inåt.



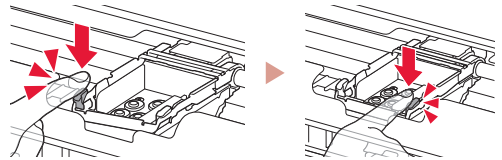
- 6 Håll in båda flikarna på låsspaken för skrivhuvudet och tryck sedan ner den.



### Viktigt!

När du har installerat skrivhuvudet ska du inte ta bort det i onödan.

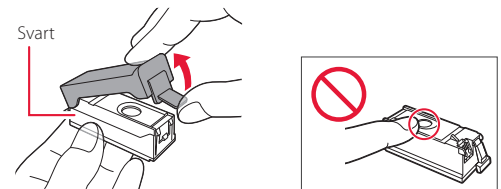
- 7 För att låsa låsspaken för skrivhuvudet trycker du på vänster och sedan på höger flik tills de klickar på plats.



## 5. Installera bläckbehållarna

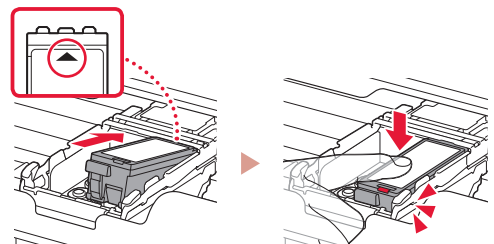


- 1 Ta bort det orange locket från den svarta bläckbehållaren.

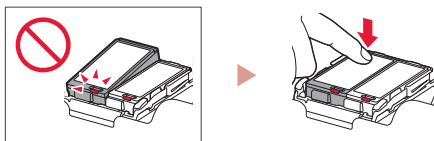
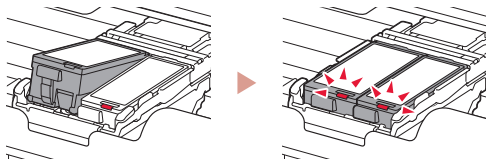


- 2 Installera bläckbehållaren.

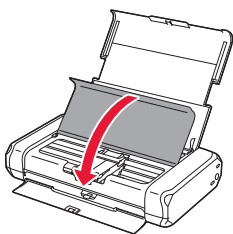
- Sätt i bläckbehållaren på höger sida om skrivhuvudet med ▲-markeringen inåt och tryck sedan nedåt tills den klickar på plats.
- Kontrollera att lampan på bläckbehållaren lyser. Om lampan inte lyser trycker du baktill på bläckbehållaren.



- 3 Upprepa steg 1 till 2 och installera även färgbläckbehållaren på vänster sida.



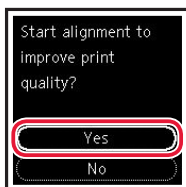
- 4 Stäng locket för skrivhuvudet.



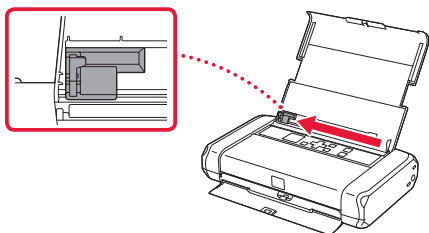
## 6. Fylla på papper



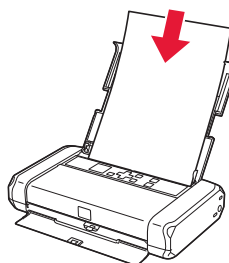
- 1 Tryck på **OK**.



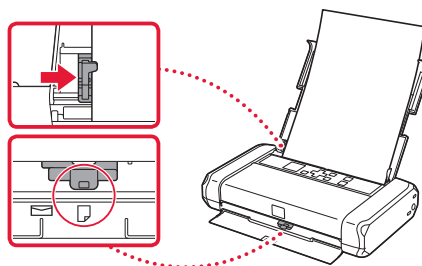
- 2 Skjut pappersledaren åt vänster.



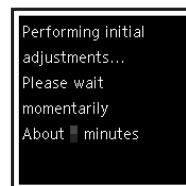
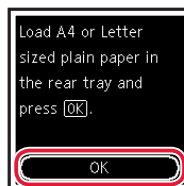
- 3 Lägg i vanligt Letter- eller A4-papper mot höger kant med utskriftssidan vänd uppåt.



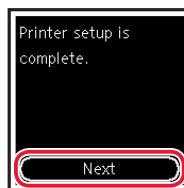
- 4 Justera pappersledaren till papperets bredd och kontrollera sedan att spaken för papperstjocklek är inställd till höger.



- 5 Tryck på **OK**.



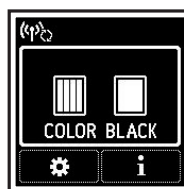
- 6 Tryck på **OK**.



### »»» Viktigt!

Skanna QR-koden för videoinstruktioner för installationsproceduren.

- 7 Kontrollera att följande skärm visas.



## Vilken enhet ansluter du?



Dator



Dator och  
smarttelefon



Smarttelefon

## 7-a

### Ansluta till dator

Om du använder flera datorer utför du dessa steg på varje dator.



- 1 Gå till Canons webbplats på en dator.

<https://ij.start.canon>



- 2 Välj  **Konfigurera**.

- 3 Mata in skrivarens modellnamn och klicka på **Kör**.

- Välj land eller region om du blir ombedd att göra det.

- 4 Klicka på **Starta**.

- 5 Klicka på **Om du redan har förberett skrivaren går du till Anslut**.

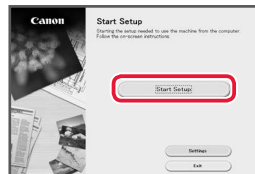
►►► **Obs!**

Följande steg gäller för Windows-användare.

- 6 Klicka på **Hämta**.

- 7 Starta den hämtade filen.

- 8 Klicka på **Starta inställningar (Start Setup)**.



- 9 Följ instruktionerna på skärmen.

- Dessa åtgärder kan ta en stund.
- Om du vill ansluta till en smarttelefon också, läs "7-b. Ansluta till en smarttelefon" på sida 5.



Använda installations-CD:n för Windows

Dubbelklicka på **EasySetup.exe** på CD:n och fortsätt sedan från steg 3. Om du inte har någon internetanslutning öppnar du **win**-mappen på CD:n och dubbelklickar på **SETUP.exe**. Då installeras skrivardrivrutinen.

## 7-b

## Ansluta till en smarttelefon

Om du använder flera smarttelefoner utför du dessa steg på varje smarttelefon.



Förbered följande innan du börjar.

- 1 Aktivera inställningen Wi-Fi på smarttelefonen.
- 2 Anslut smarttelefonen till den trådlösa routern (om du har en trådlös router).

Läs smarttelefonens och den trådlösa routerns handböcker för mer detaljer.

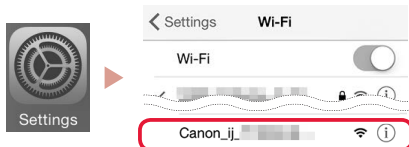
### 1 Installera appen "Canon PRINT Inkjet/SELPHY" på smarttelefonen.

- Skanna QR-koden som visas till höger för att komma till Canons webbplats och ladda sedan ner appen.



### 2 Öppna Wi-Fi-inställningarna på smarttelefonen. Tryck på nätverksnamnet (SSID) som börjar med "Canon\_ij\_". Om "Canon\_ij\_" inte visas går du vidare till steg 3.

(Exempel på iOS-skärm)



### 3 Öppna den installerade appen.



### 4 Följ instruktionerna på skärmen i appen för att lägga till skrivaren.

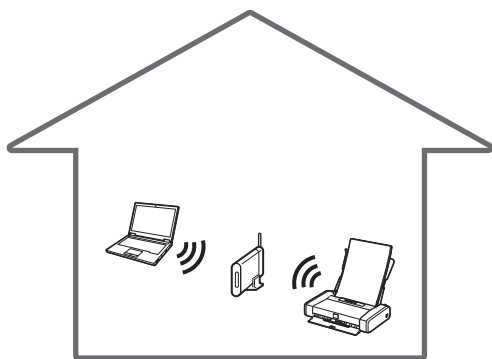
När du har lagt till skrivaren kan du skriva ut från din smarttelefon.

## Använda skrivaren utan en trådlös router



Läs **Skriva ut från andra ställen än hemma** i **Onlinehandbok**.

För att använda skrivaren i ett område där du inte har tillgång till Wi-Fi måste du ändra inställningarna på din dator eller smarttelefon.



I vanliga fall använder du en trådlös router för att ansluta skrivaren till din dator eller smarttelefon.



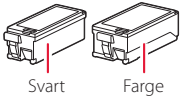
När du inte har tillgång till en trådlös router kan du ansluta skrivaren direkt till datorn eller smarttelefonen (**Trådlöst direkt**).



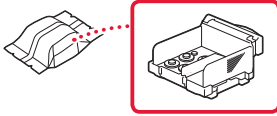
# Konfigurere skriveren

## 1. Innhold i esken

- Blekktanker



- Skrivehode



- Strømadapter

- Strømledning

- USB-kabel

- Installerings-CD-ROM for Windows

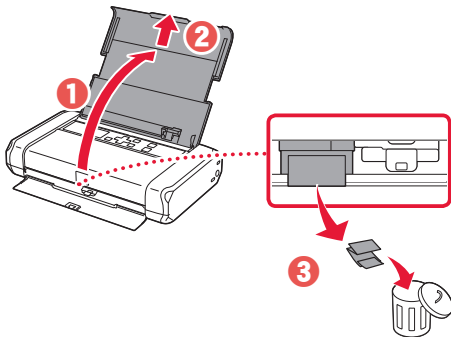
- Sikkerhetsinformasjon og viktig informasjon

- Komme i gang (denne manualen)

## 2. Fjerne beskyttelsesmateriale



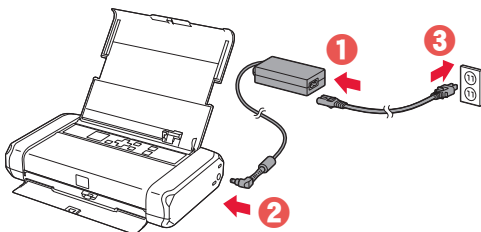
- 1 Fjern og kast eventuelt beskyttelsesmateriale og oransje tape.
- 2 Åpne og forleng baksuffdekelet, og fjern og kast deretter beskyttelsesmateriale.
  - Dekelet for papirleveringssporet åpnes automatisk.



## 3. Slå på skriveren



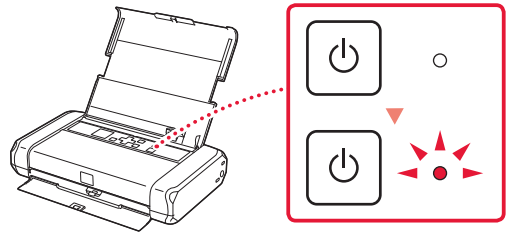
- 1 Koble til strømledningen.



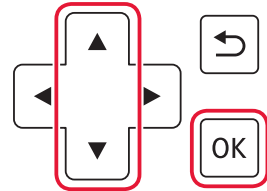
### »»» Viktig!

Ikke koble til andre kabler på dette tidspunktet.

- 2 Trykk og hold inne **PÅ (ON)**-knappen inntil **PÅ (ON)**-lampen begynner å lyse.



- 3 Bruk knappene **▲**, **▼** og **OK** for å velge et språk.



- 4 Trykk på **OK**-knappen.



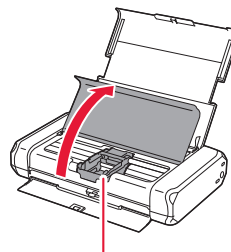
### »»» Viktig!

Skann QR-koden for en videoveiledning om oppsettsprosedyren.

## 4. Installere skrivehode



- 1 Åpne dekelet for skrivehodet.

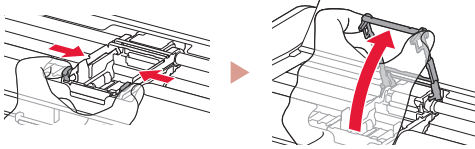


### ⚠ Forsiktig!

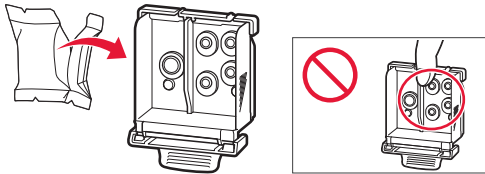
Ikke rør skrivehodeholderen før den har sluttet å bevege seg.

## Konfigurere skriveren

- 2 Trykk begge tappene på låsehendelen for skrivehodet innover for å frigi låsen, og løft den deretter opp til den stopper.



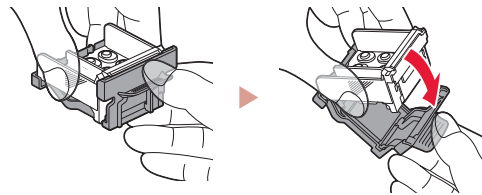
- 3 Fjern skrivehodet fra innpakningen.



### Viktig!

Det kan være litt transparent eller lyst fargeblekk på innsiden av posen som skrivehodet leveres i – dette påvirker ikke utskriftskvaliteten. Vær forsiktig så du ikke får blekk på deg når du håndterer disse elementene.

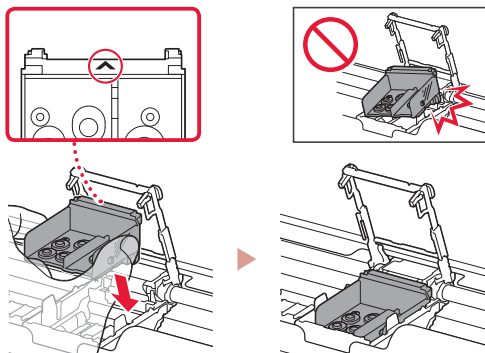
- 4 Fjern den beskyttende korken.



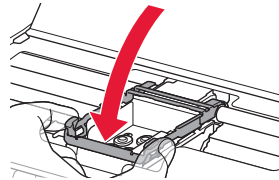
### Viktig!

Ikke berør områdene som er vist på figuren. Skriveren vil ellers ikke kunne skrive ut riktig.

- 5 Sett skrivehodet i skrivehodeholderen slik at merkene ▲ vender innover.



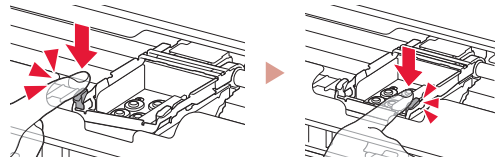
- 6 Hold i begge tappene på låsehendelen for skrivehodet, og senk den.



### Viktig!

Når du har installert skrivehodet, bør du ikke fjerne det igjen unødvendig.

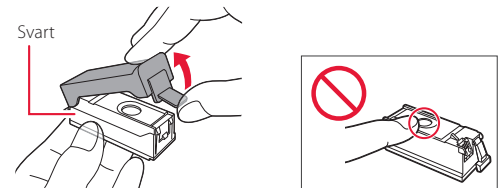
- 7 For å låse låsehendelen for skrivehodet trykker du på venstre og deretter høyre tapp til de klikker på plass.



## 5. Installere blekktankene

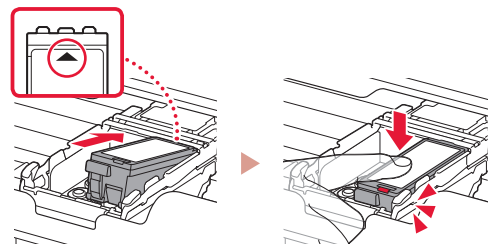


- 1 Ta av den oransje korken på den svarte blekktanken.

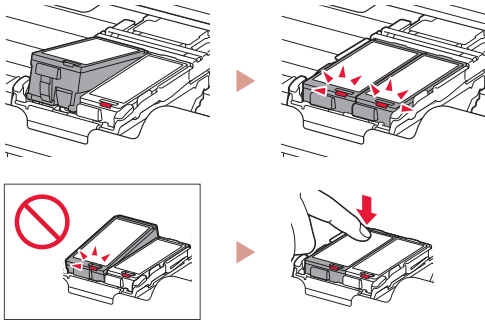


- 2 Installer blekktanken.

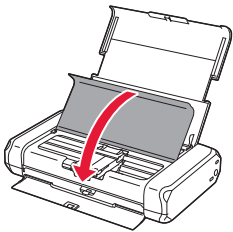
- Sett inn blekktanken på høyre side av skrivehodet, slik at merket ▲ vender innover, og trykk den ned til den klikker.
- Kontroller at lampen på blekktanken lyser. Hvis lampen fortsatt ikke lyser, trykker du ned på baksiden av blekktanken.



- 3 Gjenta trinn 1 til 2 og installer fargeblekktanken også, på venstre side.



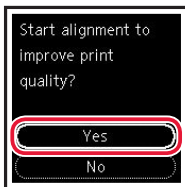
- 4 Lukk dekelet for skrivehodet.



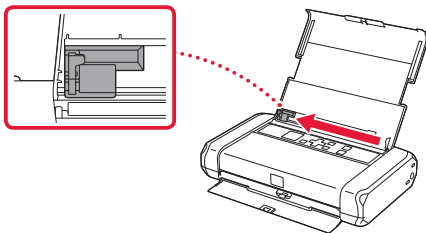
## 6. Legge i papir



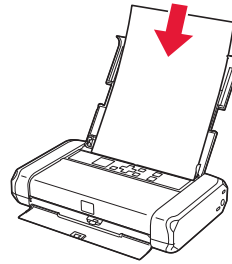
- 1 Trykk på **OK**-knappen.



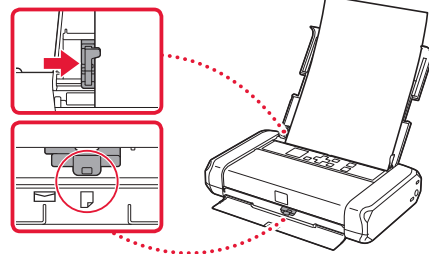
- 2 Dra papirføreren til venstre.



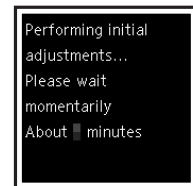
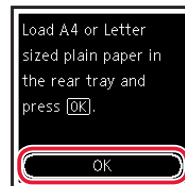
- 3 Legg inn vanlig papir i Letter- eller A4-størrelse inntil den høyre kanten med utskriftssiden opp.



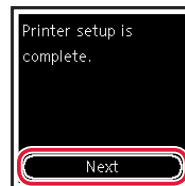
- 4 Juster papirføreren ut fra bredden på papiret, og kontroller deretter at håndtaket for papirtykkelse er stilt til høyre.



- 5 Trykk på **OK**-knappen.



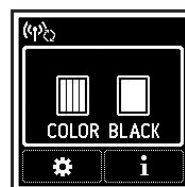
- 6 Trykk på **OK**-knappen.



### »»» Viktig!

Skann QR-koden for en videoveiledning om oppsettsprosedyren.

- 7 Sjekk at følgende skjermbilde vises.



### Hvilken enhet kobler du til?



Datamaskin



Datamaskin og smarttelefon



Smarttelefon

## 7-a

### Koble til en datamaskin

Hvis du bruker flere datamaskiner, utfører du disse trinnene på hver datamaskin.



- 1 Åpne Canon-nettstedet fra en datamaskin.

<https://ij.start.canon>



- 2 Velg  **Oppsett.**

- 3 Angi skriverens modellnavn og klikk på **Gå.**

- Hvis du blir bedt om det, velger du land eller region.

- 4 Klikk på **Start.**

- 5 Klikk på **Hvis du allerede har gjort klar skriveren, går du til Koble til.**

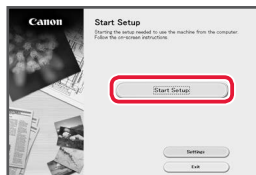
»»» **Merk**

Følgende trinn gjelder Windows-brukere.

- 6 Klikk på **Last ned.**

- 7 Kjør den nedlastede filen.

- 8 Klikk på **Start oppsett (Start Setup).**



- 9 Følg instruksjonene på skjermen.

- Disse operasjonene kan ta litt tid.
- Se "7-b. Koble til en smarttelefon" på side 5 hvis du i tillegg vil koble til en smarttelefon.



Bruke installerings-CD-ROM for Windows

Dobbeltklikk på **EasySetup.exe** på CD-en, og fortsett deretter fra trinn 3. Hvis du ikke har internettforbindelse, kan du åpne **win**-mappen på CD-en og dobbeltklikke på **SETUP.exe**. Dette installerer skriverdriveren.

## 7-b Koble til en smarttelefon

Hvis du bruker flere smarttelefoner, utfører du disse trinnene på hver smarttelefon.



Klargjør følgende før du starter.

- 1 Aktiver Wi-Fi-innstillingen på smarttelefonen.
- 2 Koble smarttelefonen til den trådløse ruterens (hvis du har en trådløs ruter).  
Se manualene for smarttelefonen og den trådløse ruterens for å få flere detaljer.

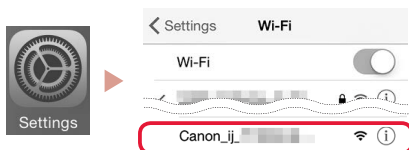
### 1 Installer "Canon PRINT Inkjet/SELPHY"-appen på smarttelefonen.

- Skann QR-koden til høyre for å få tilgang til Canon-nettstedet, og last deretter ned appen.



### 2 Åpne Wi-Fi-innstillingen på smarttelefonen. Trykk på nettverksnavnet (SSID) som begynner med "Canon\_ij\_". Hvis "Canon\_ij\_" ikke vises, fortsetter du til trinn 3.

(Eksempel på iOS skjermbilde)



### 3 Åpne den installerte appen.



### 4 Følg instruksjonene på skjermen i appen for å legge til skriveren.

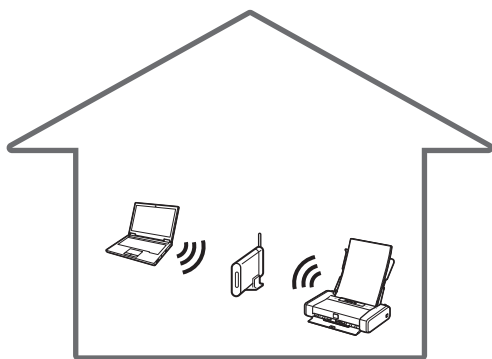
Når du har lagt til skriveren din, kan du skrive ut fra smarttelefonen.

## Bruke skriveren uten en trådløs ruter



Se **Skrive ut når du er hjemmefra** i **Nettbasert manual** hvis du ønsker mer informasjon.

For å kunne bruke skriveren på et sted der du ikke har tilgang til Wi-Fi, må du endre innstillingene på datamaskinen eller smarttelefonen.



Normalt sett bruker du en trådløs ruter for å koble skriveren til datamaskin eller smarttelefon.

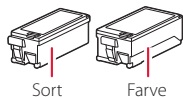


Når en trådløs ruter ikke er tilgjengelig, kan du koble skriveren direkte til datamaskinen eller smarttelefonen (**Direkte trådløs tilkobling**).

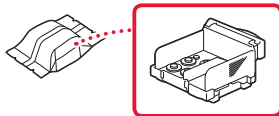
# Konfigurere printeren

## 1. Æskens indhold

● Blækbeholdere



● Printhead



● Lysnetadapter

● Netledning

● USB-kabel

● Installations-cd-rom til Windows

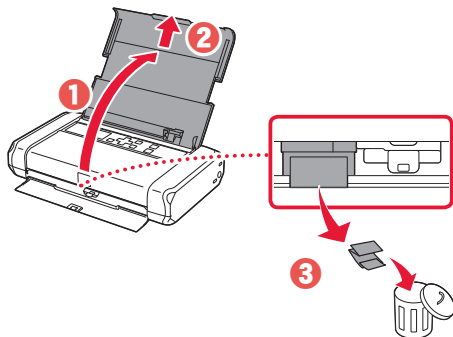
● Sikkerhedsoplysninger og vigtige oplysninger

● Før du begynder (denne vejledning)

## 2. Fjern emballage



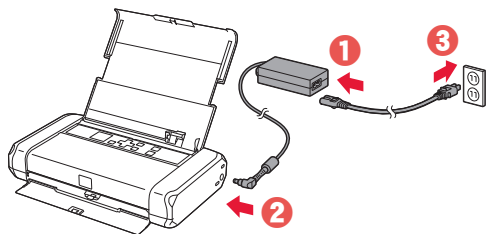
- 1 Fjern og bortskaf al emballage og orange tape.
- 2 Åbn dækslet til bagerste bakke, og træk det ud. Fjern derefter det beskyttende materiale, og smid det væk.
  - Dækslet til udgangen til udbakken åbnes automatisk.



## 3. Tænd printeren



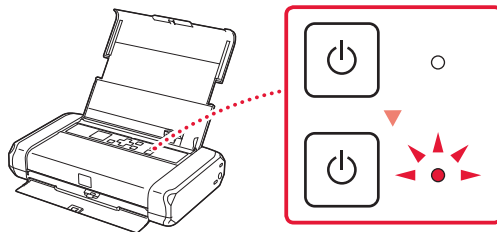
- 1 Tilslut netledningen.



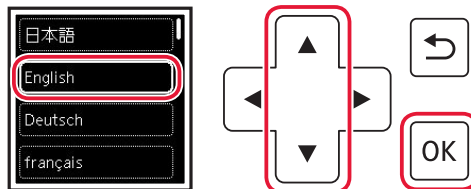
►►► **Vigtigt**

På dette tidspunkt må du ikke tilslutte nogen andre kabler.

- 2 Tryk på knappen **TIL (ON)**, og hold den inde, indtil lampen **TIL (ON)** lyser.



- 3 Brug knapperne ▲, ▼ og OK til at vælge et sprog.



- 4 Tryk på knappen **OK**.



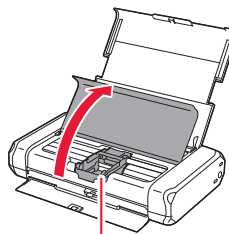
►►► **Vigtigt**

Scan QR-koden for at se en videovejledning til opsætningen.

## 4. Installation af printheadet



- 1 Åbn printheaddækslet.

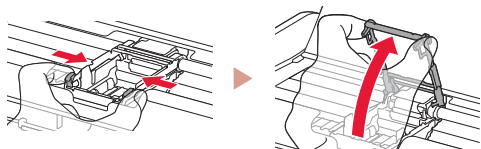


▲ **Forsigtig**

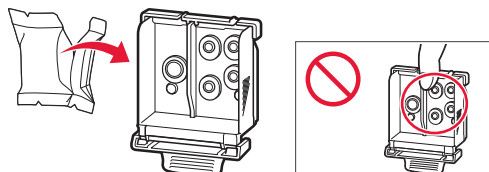
Undgå at røre ved printheadholderen, før den stopper.

## Konfigurere printeren

- 2 Tryk indad på begge tapper på printhovedets låsehåndtag for at frigøre låsen, og løft den derefter, indtil den stopper.



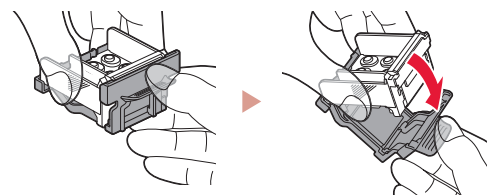
- 3 Tag printhovedet ud af pakken.



### Vigtigt

Der kan være noget gennemsigtigt eller lyst farveblæk på indersiden af den pose, som printhovedet leveres i – det har ingen betydning for udskriftskvaliteten. Pas på, at du ikke får blæk på dig, når du håndterer disse elementer.

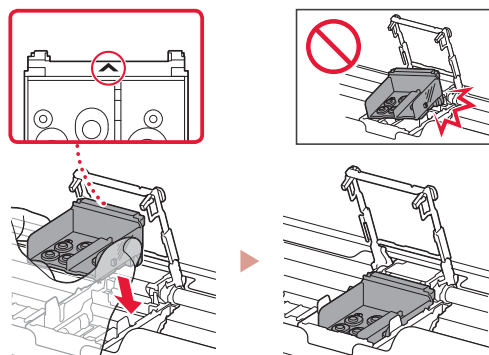
- 4 Fjern beskyttelseshætten.



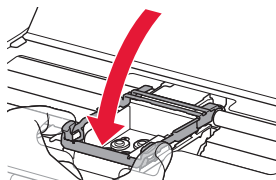
### Vigtigt

Rør ikke de områder, der vises på figuren. Hvis du gør det, kan printeren muligvis ikke udskrive korrekt.

- 5 Indsæt printhovedet i printhovedholderen, så mærket ▲ vender indad.



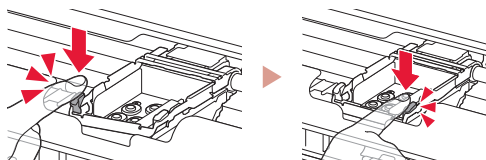
- 6 Hold på begge tapper på printhovedets låsehåndtag, og sænk det.



### Vigtigt

Når du har installeret printhovedet, skal du ikke fjerne det, medmindre det er nødvendigt.

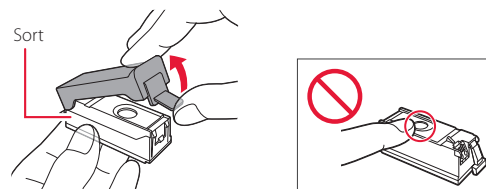
- 7 For at låse printhovedets låsehåndtag skal du skubbe venstre tap og derefter højre tap, indtil de klikker på plads.



## 5. Installation af blækbeholdere

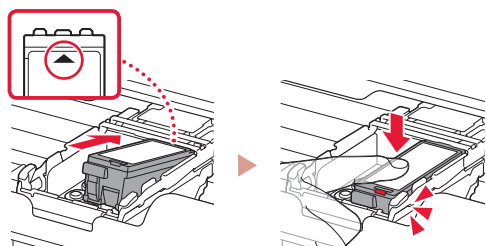


- 1 Fjern den orange hætte fra den sorte blækbeholder.



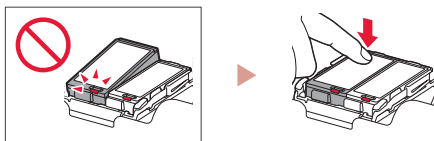
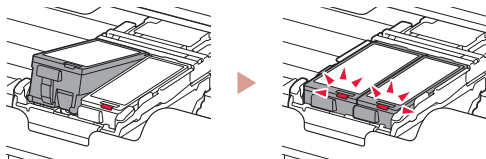
- 2 Installer blækbeholderen.

- Indsæt blækbeholderen i højre siden af printhovedet, så mærket ▲ vender indad. Tryk derefter nedad, indtil den klikker.
- Tjek, at lampen på blækbeholderen lyser. Hvis lampen ikke lyser, skal du trykke nedad på bagsiden af blækbeholderen.

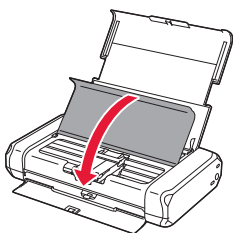




- 3 Gentag trin 1 til 2, og installer blækbeholderen med farve til venstre.



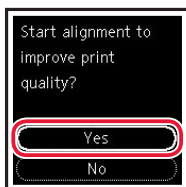
- 4 Luk printhoveddækslet.



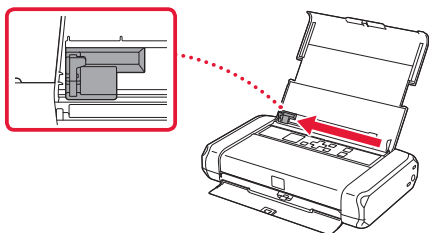
## 6. Ilægning af papir



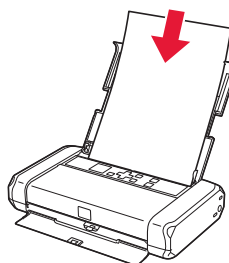
- 1 Tryk på knappen **OK**.



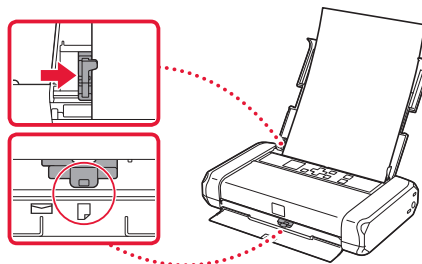
- 2 Skub papirstyret til venstre.



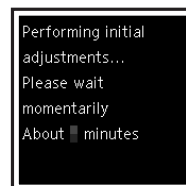
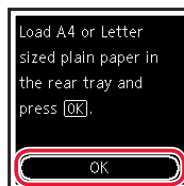
- 3 Ilæg almindeligt papir i Letter- eller A4-størrelse mod den højre kant med udskriftssiden opad.



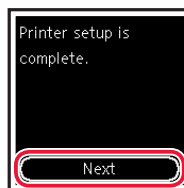
- 4 Juster papirstyret med bredden af papiret, og tjek derefter, at grebet til justering af papirtykkelse er placeret til højre.



- 5 Tryk på knappen **OK**.



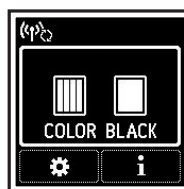
- 6 Tryk på knappen **OK**.



### »»» Vigtigt

Scan QR-koden for at se en videovejledning til opsætningen.

- 7 Tjek, at følgende skærbillede vises.



### Hvilken enhed tilslutter du?



Computer



Computer og  
smartphone



Smartphone

## 7-a

### Tilslutning til en computer

Hvis du bruger flere computere, skal du udføre disse trin på hver computer.



- 1 Gå til Canon-webstedet fra en computer.

<https://ij.start.canon>



- 2 Vælg  **Konfiguration**.

- 3 Skriv printerens modelnavn, og klik på **Ok**.

- Vælg land eller område, hvis du bliver bedt om det.

- 4 Klik på **Start**.

- 5 Klik på **Hvis du allerede har forberedt din, skal du gå til Tilslut**.

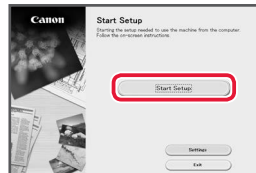
▶▶▶ **Bemærk**

Følgende trin gælder for Windows-brugere.

- 6 Klik på **Hent**.

- 7 Kør den downloadede fil.

- 8 Klik på **Start opsætning (Start Setup)**.



- 9 Følg instruktionerne på skærmen.

- Disse handlinger kan tage lidt tid.
- Hvis du også vil tilslutte en smartphone, skal du se "7-b. Tilslutning til en smartphone" på side 5.



Brug installations-cd-rom'en til Windows

Dobbeltklik på **EasySetup.exe** på cd-rom'en, og fortsæt derefter fra trin 3. Hvis du ikke har en internetforbindelse, skal du åbne mappen **win** på cd-rom'en og dobbeltklikke på **SETUP.exe**. Herefter installeres printerdriveren.

## 7-b Tilslutning til en smartphone

Hvis du bruger flere smartphones, skal du udføre disse trin på hver smartphone.



Forbered følgende inden start.

- 1 Aktivér indstillingen Wi-Fi på din smartphone.
- 2 Slut din smartphone til den trådløse router (hvis du har en trådløs router).

Se brugervejledningerne til din smartphone og trådløse router for at få flere oplysninger.

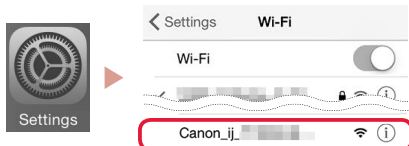
### 1 Installer appen "Canon PRINT Inkjet/SELPHY" på din smartphone.

- Scan den QR-kode, der vises til højre, for at få adgang til Canon-webstedet, og download derefter appen.



### 2 Åbn Wi-Fi-indstillingerne på din smartphone. Tryk på det netværksnavn (SSID), der starter med "Canon\_ij\_". Hvis "Canon\_ij\_" ikke vises, skal du fortsætte til trin 3.

(Et eksempel på en iOS-skærm)



### 3 Åbn den installerede app.



### 4 Følg instruktionerne på skærmen i appen for at tilføje din printer.

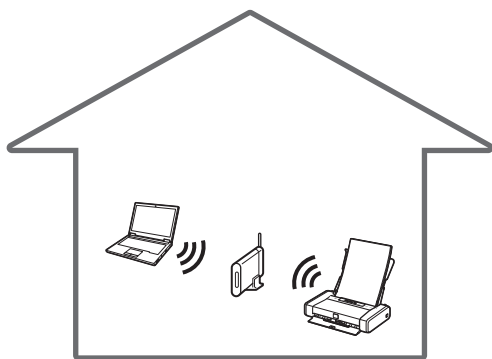
Når du har tilføjet din printer, kan du udskrive fra din smartphone.

## Brug af printeren uden en trådløs router



Se **Udskriv, når du ikke er hjemme** i **Online vejledning**.

Hvis du vil bruge printeren i et område, hvor du ikke har adgang til Wi-Fi, skal du ændre indstillingerne på din computer eller smartphone.



Normalt bruger du en trådløs router til at tilslutte din printer til din computer eller smartphone.

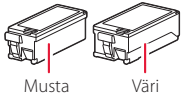


Hvis der ikke er en tilgængelig trådløs router, kan du tilslutte din printer direkte til din computer eller smartphone (**Trådløs direkte**).

# Tulostimen asennus

## 1. Paketin sisällys

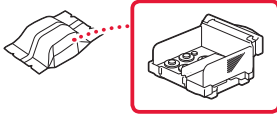
• Mustesäiliöt



Musta

Väri

• Tulostuspää



• Verkkolaite

• Virtajohto

• USB-kaapeli

• Asennus-CD Windows-tietokoneelle

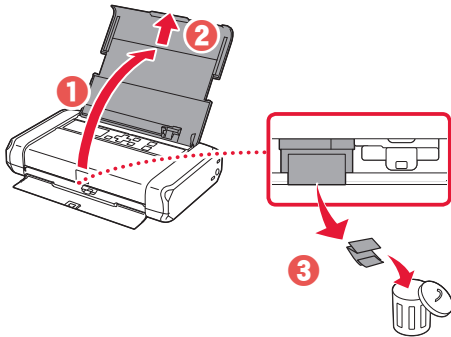
• Turvallisuus ja tärkeitä tietoja

• Aloitusopas (tämä käyttöopas)

## 2. Pakkausmateriaalien poistaminen



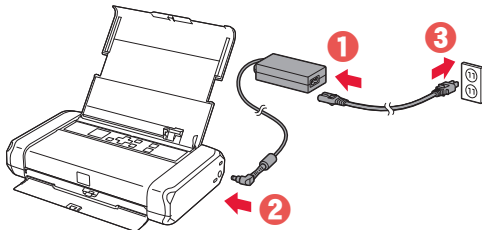
- 1 Poista kaikki pakkausmateriaalit ja oranssi teippi.
- 2 Avaa ja laajenna takalokeron kansi, ja poista ja hävitä sitten suojamateriaali.
  - Paperin luovutustason kansi avautuu automaattisesti.



## 3. Virran kytkeminen tulostimeen



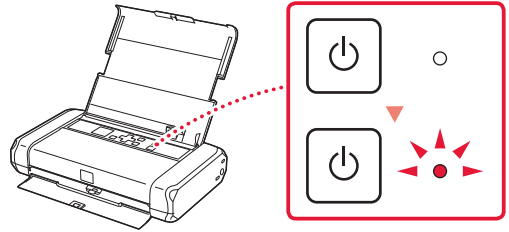
- 1 Kytke virtajohto.



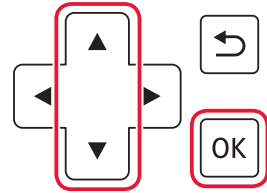
»»» Tärkeää

Älä tässä vaiheessa kytke mitään muuta johtoa.

- 2 Pidä painettuna **KÄYTTÖSSÄ (ON)** -painiketta, kunnes **KÄYTTÖSSÄ (ON)** -merkkivalo syttyy.



- 3 Valitse kieli ▲-, ▼- ja OK-painikkeilla.



- 4 Paina OK-painiketta.



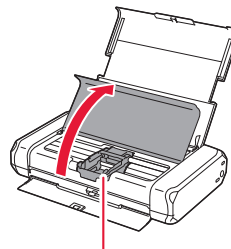
»»» Tärkeää

Skannaa QR-koodi, jos haluat katsoa asetuksen video-ohjeet.

## 4. Tulostuspään asentaminen



- 1 Avaa tulostuspään pidikkeen kansi.

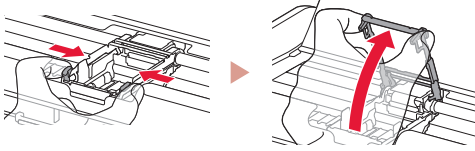


▲ Huomio

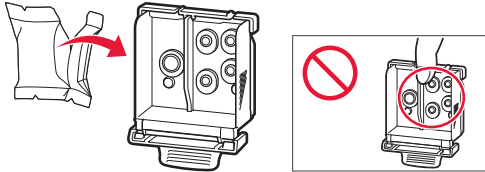
Älä koske tulostuspään pidikkeeseen, ennen kuin sen liike pysähtyy.

## Tulostimen asennus

- 2 Paina sisäänpäin molempia tulostuspään lukitusvivun kielekkeitä lukon vapauttamiseksi, ja sitten nosta sitä varovasti, kunnes se pysähtyy.



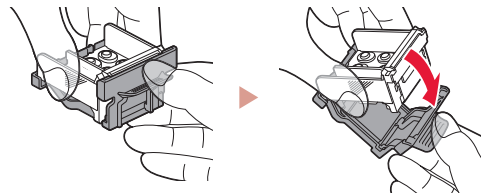
- 3 Poista tulostuspää paketista.



### »»» Tärkeää

Tulostuspään sisältävässä pussissa voi olla hieman läpinäkyvää tai vaaleaa mustetta - tämä ei vaikuta tulostuslaatuun. Varo, ettet tahraa itseäsi musteeseen, kun käsittelet näitä kohteita.

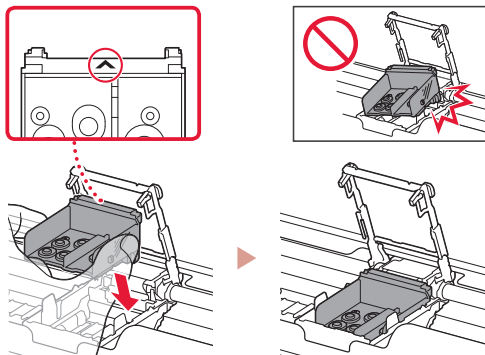
- 4 Poista suojus.



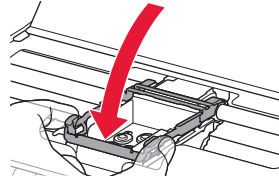
### »»» Tärkeää

Älä koske kuvassa merkittyihin alueisiin. Tulostin välttämättä tulosta muussa tapauksessa oikein.

- 5 Aseta tulostuspää tulostuspään pidikkeeseen niin, että ▲-merkki osoittaa sisäänpäin.



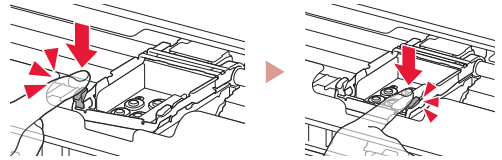
- 6 Pitele tulostuspään lukitusvivun molempia kielekkeitä ja laske se alas.



### »»» Tärkeää

Kun olet asentanut tulostuspään, älä poista sitä tarpeettomasti.

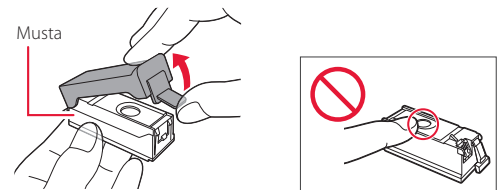
- 7 Voit lukita tulostuspään lukitusvivun painamalla ensin vasenta ja sitten oikeaa kielekettä, kunnes ne napsahtavat paikoilleen.



## 5. Mustesäiliöiden asennus

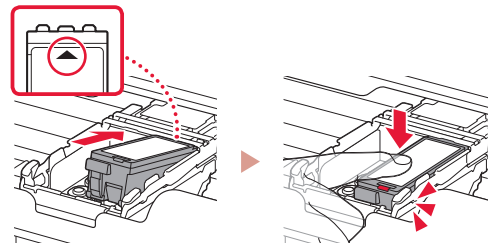


- 1 Poista oranssi suojus mustasta mustesäiliöstä.

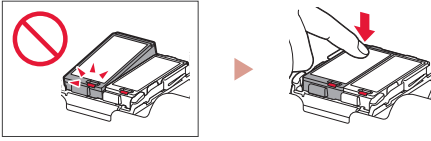
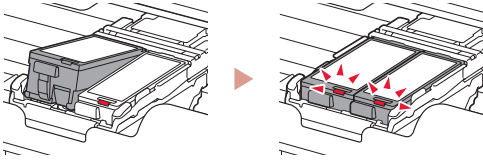


- 2 Asenna mustesäiliö.

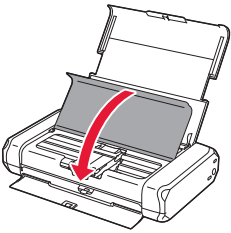
- Aseta mustesäiliö tulostuspään oikealle puolelle niin, että ▲-merkki osoittaa sisäänpäin, ja paina sitten alas, kunnes se naksahdaa.
- Tarkista, että mustesäiliön merkkivalo palaa. Jos merkkivalo ei pala, paina mustesäiliön takaosaa.



- 3 Toista vaiheet 1–2 ja asenna myös värillinen mustesäiliö vasemmalle.



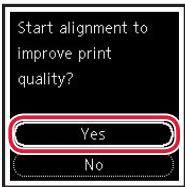
- 4 Sulje tulostuspään kansi.



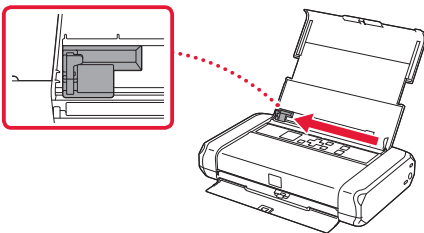
## 6. Paperin asettaminen



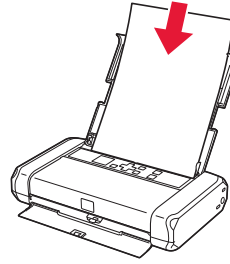
- 1 Paina **OK**-painiketta.



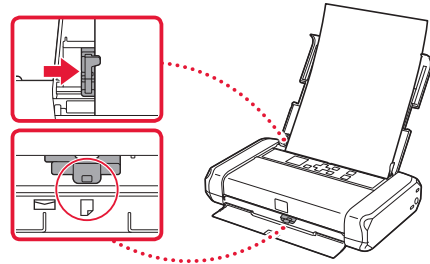
- 2 Liu'uta paperiohjain vasemmalle.



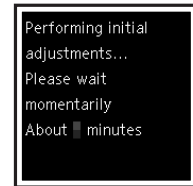
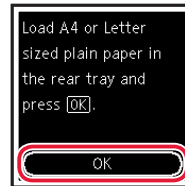
- 3 Aseta tavallinen Letter- tai A4-kokoinen paperi oikeaa reunaa vasten tulostuspuoli ylöspäin.



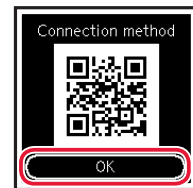
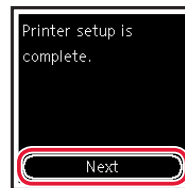
- 4 Kohdista paperiohjain paperin leveyteen ja tarkista sitten, että paperin paksuudensäätövipu on asetettu oikealle.



- 5 Paina **OK**-painiketta.



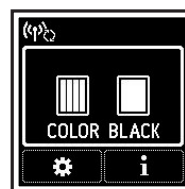
- 6 Paina **OK**-painiketta.



### »»» Tärkeää

Skannaa QR-koodi, jos haluat katsoa asetuksen video-ohjeet.

- 7 Tarkista, että seuraava näyttö tulee näkyviin.



## Mitä laitetta olet yhdistämässä?



Tietokone



Tietokone ja  
älypuhelin



Älypuhelin

## 7-a

### Yhdistäminen tietokoneeseen

Jos käytät useita tietokoneita, suorita nämä vaiheet jokaiselle tietokoneelle.



- 1 Avaa tietokoneesta Canon-  
verkkosivusto.

<https://ij.start.canon>



- 2 Valitse  **Määrittys**.

- 3 Anna tulostinmallin nimi ja valitse  
**Siirry**.

- Voit valita oman maan tai alueen, mikäli sitä pyydetään.

- 4 Valitse **Aloita**.

- 5 Valitse **Jos olet jo valmistellut  
tulostimen, siirry kohtaan Yhdistä**.

»»» **Huomautus**

Seuraavat vaiheet ovat Windows-käyttäjille.

- 6 Valitse **Lataa**.

- 7 Suorita ladattu tiedosto.

- 8 Valitse **Aloita asetukset (Start Setup)**.



- 9 Noudata näytön ohjeita.

- Näissä toiminnoissa voi kestää hetken.
- Jos haluat liittää myös älypuhelimien, katso kohtaa "7-b. Yhdistäminen älypuhelimien" sivulla 5.



#### Asennus-CD-levyn käyttö Windows-järjestelmässä

Kaksoinapsauta CD-levyn **EasySetup.exe**-tiedostoa, ja jatka sitten vaiheesta 3. Jos sinulla ei ole internet-yhteyttä, avaa CD-levyn **win**-kansio ja kaksoinapsauta **SETUP.exe**. Tämä asentaa tulostinajurin.



## 7-b

### Yhdistäminen älypuhelimien

Jos käytät useita älypuhelimia, suorita nämä vaiheet jokaiselle älypuhelimelle.



Valmistele seuraavat, ennen kuin aloitat.

- 1 Ota Wi-Fi-asetus käyttöön älypuhelimessa.
- 2 Yhdistä älypuhelin langattomaan reitittimeen (jos käytössäsi on langaton reititin).

Katso lisätietoja älypuhelimien ja langattoman reitittimen käyttöoppaista.

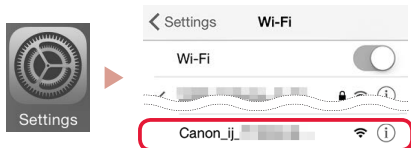
#### 1 Asenna "Canon PRINT Inkjet/SELPHY" -sovellus älypuhelimien.

- Skannaa QR-koodi, joka näkyy oikealla, niin pääset Canon-sivustoon, ja lataa sitten sovellus.



#### 2 Avaa älypuhelimien Wi-Fi-asetukset. Napauta verkkonimeä (SSID), joka alkaa tekstillä "Canon\_ij\_". Jos "Canon\_ij\_" ei ole näkyvässä, jatka vaiheesta 3.

(Esimerkki iOS-näytöstä)



#### 3 Avaa asennettu sovellus.



#### 4 Noudata tulostimen lisäämisessä sovelluksen näytön ohjeita.

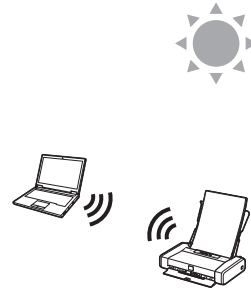
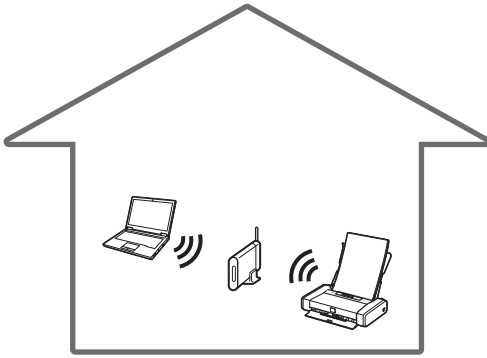
Kun olet lisännyt tulostimen, voit tulostaa älypuhelimestasi.

# Tulostimen käyttö ilman langatonta reititintä



Katso lisätietoja **Online-käyttöopas**-oppaan kohdasta **Tulostaminen ollessasi poissa kotoa**.

Jos haluat tulostaa sellaisella alueella, jossa ei ole Wi-Fi-yhteyttä, muuta tietokoneen tai älypuhelimien asetuksia.



Tavallisesti käytät langatonta reititintä tulostimen yhdistämiseen tietokoneen tai älypuhelimien kanssa.

Kun langatonta reititintä ei ole käytettävissä, voit yhdistää tulostimen suoraan tietokoneeseen tai älypuhelimien (**Langaton suora**).





Access Online Manual  
Zugriff auf das Online-Handbuch  
Accedere al Manuale online  
Acceso al Manual en línea  
Läs Onlinehandbok  
Åbn Online vejledning

Accès au Manuel en ligne  
Online handleiding openen  
Acesse o Manual On-line  
Αποκτήστε πρόσβαση στο Εγχειρίδιο Online  
Gå til Nettbasert manual  
Online-käyttöopas-oppaan käyttö

From your browser

À partir de votre navigateur

Über Ihren Browser

Via de browser

Dal browser

Do seu navegador

Desde su navegador

Από το πρόγραμμα περιήγησής σας

Från webbläsaren

Fra nettleseren din

Fra din browser

Selaimesta

