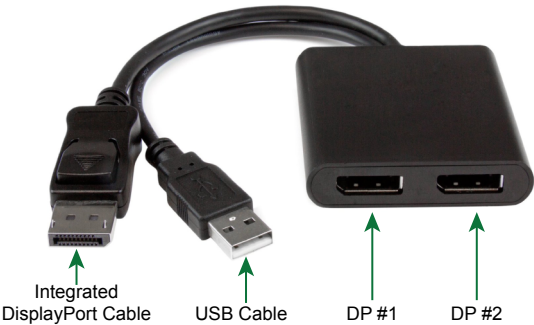


2 Ports DisplayPort Splitter

Quick Installation Guide Ver. 1.0

All brand names and trademarks are properties of their respective owners

PANEL DESCRIPTIONS:



PACKAGE CONTENTS:

- 1 x Main unit
- 1 x User Manual

INTRODUCTION:

1. Ensure your computer system and DisplayPort Displays are powered off.
2. Connect the integrated DisplayPort cable into the DisplayPort connector on the host computer system/video card.
3. Connect the DisplayPort monitor/display device(s) into the DisplayPort #1/#2 connectors on the MST Hub
4. Power on the monitor/display device(s).
5. Turn on the computer system.
6. The system will now detect the MST Hub, and add the attached displays to the Display Settings of the System.

FEATURES:

- Maximize your productivity by connecting up to two independent displays to your computer using the MST Hub
- Connect to almost any television, monitor or projector with the support of low-cost adapters
- Increase external video performance with support for resolutions up to 4K
- VESA and DisplayPort certified
- Compatible with DP1.2 Graphics cards such as AMD Eyefinity Technology & AMD Radeon
- Plug-and-play installation
- Newly engineered chipset for increased compatibility

SYSTEM REQUIREMENTS

- DisplayPort 1.2 enabled computer system/video card
- Up to 2 DisplayPort enabled display devices (e.g. monitor) with cabling

SPECIFICATIONS:

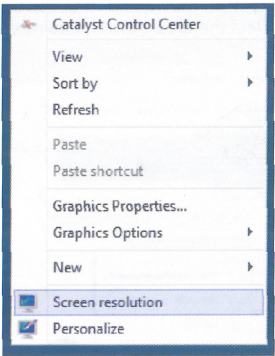
Video Signal	DisplayPort
Number of Ports	2
External Connectors	1x DisplayPort Male 2x DP Female
Maximum Display Resolution	4K at 30 Hz

Microsoft® Windows® Operation

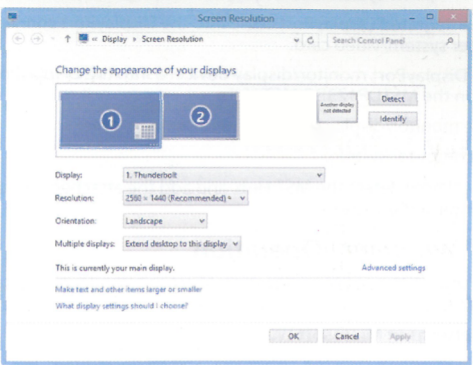
With a DisplayPort 1.2 compatible video card, Microsoft Windows® will recognize the individual Displays (up to 2) and can either Extend or Duplicate the main Monitor.

Adjust video settings in Microsoft Windows®

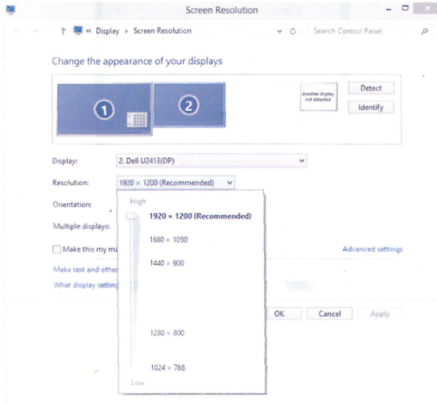
1. Right click the Windows Desktop and select"Screen Resolution". The Display Settings window appears.



NOTE: Each monitor connected in represented by a number displayed under "Change the appearance of your displays". to determine which number corresponds with each display click the Identify button.



2. To adjust the Resolution, click on the number that corresponds with the monitor you wish to adjust, and select the drop down menu next to "Resolution:".



3. To Choose whether the Monitor will Duplicate or Extend your main Monitor, select the number that corresponds with the Monitor you wish to adjust, and select the drop down menu next to "Multiple Displays:". "Extend these displays" will extend your monitor main onto the selected monitor. "Duplicate these Displays" will show the same image as your main monitor on the selected monitor.

