

Getting started

IN SEARCH OF
INCREDIBLE

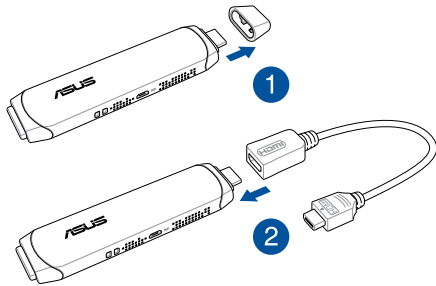
Quick Start Guide

دليل التشغيل السريع	빠른 시작 설명서
Кратко упу̀тване за бърз старт	Greitos darbo pradžios vadovas
Stručná příručka	İsa pamâciba
Quick Start-vejledning	Hurtigstartsvejledning
Snelstartgids	Guia de consulta rápida
Lühijuhend	Instrukcja szybkiej instalacji
راهنمای شروع سریع	Краткое руководство
Guide de démarrage rapide	Ghid de pornire rapidă
Pikakäynnistysopas	Guia de início rápida
Schnellstarthilfe	Vodič za brzo korišćenje
Οδηγός γρήγορης έναρξης	Stručný návod na spustenie
Beüzemelési útmutató	Snabbstartsguide
Guida Rapida	คู่มือเริ่มต้นอย่างเร็ว
Panduan Ringkas	Hızlı Başlatma Kılavuzu
クイックスタートガイド	Hồðùng dẫn nhòu nhòng nhanh
Жылдам іске қосу нұсқаулығы	

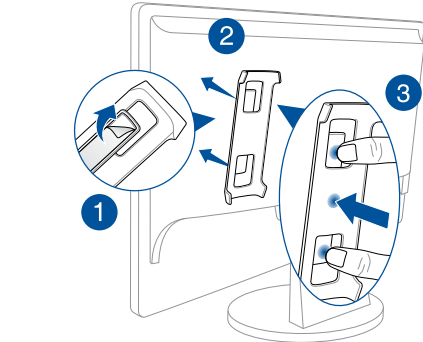
For multi-language manuals, please refer to ASUS website:
<http://www.asus.com/Stick-PCs/VivoStick-PC-TS10>



Connecting HDMI extension cable
and VivoStick Holder



1. Remove the cap, then connect your HDMI extension cable.



2. Ensure the adhesive is firmly placed on the back of the VivoStick Holder, then stick your VivoStick Holder to your monitor and firmly press it in place.

NOTE: Ensure to wait at least twenty-four (24) hours for the adhesive to secure in place.

- NOTE:**
- Ensure that the air vents on your VivoStick are not blocked or else overheating may occur. Use the VivoStick Holder to prevent blocking the air vents.
 - Place your VivoStick or powered USB hub near the side of your monitor to ensure that wireless signals are not obstructed.
 - Use the USB 2.0 port to connect external devices to maintain the quality of your wireless connections.
 - Use a keyboard and mouse to set up the device when using it for the first time. USB hub, keyboard and mouse are for reference only and not included.
 - Any peripheral over 500 mA (USB 2.0) or 900 mA (USB 3.0) current draw should be connected via a powered USB hub, and not directly to the USB port.
 - For best performance, operate at 1°C (33.8°F) – 35°C (95°F).
 - Visit our multi-language web site at <https://www.asus.com/support/>

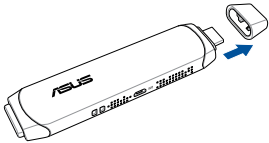
- NOTE:**
- Ensure that the air vents on your VivoStick are not blocked or else overheating may occur. Use the VivoStick Holder to prevent blocking the air vents.
 - Place your VivoStick or powered USB hub near the side of your monitor to ensure that wireless signals are not obstructed.
 - Use the USB 2.0 port to connect external devices to maintain the quality of your wireless connections.
 - Use a keyboard and mouse to set up the device when using it for the first time. USB hub, keyboard and mouse are for reference only and not included.
 - Any peripheral over 500 mA (USB 2.0) or 900 mA (USB 3.0) current draw should be connected via a powered USB hub, and not directly to the USB port.
 - For best performance, operate at 1°C (33.8°F) – 35°C (95°F).
 - Visit our multi-language web site at <https://www.asus.com/support/>

- NOTE:**
- Ensure that the air vents on your VivoStick are not blocked or else overheating may occur. Use the VivoStick Holder to prevent blocking the air vents.
 - Place your VivoStick or powered USB hub near the side of your monitor to ensure that wireless signals are not obstructed.
 - Use the USB 2.0 port to connect external devices to maintain the quality of your wireless connections.
 - Use a keyboard and mouse to set up the device when using it for the first time. USB hub, keyboard and mouse are for reference only and not included.
 - Any peripheral over 500 mA (USB 2.0) or 900 mA (USB 3.0) current draw should be connected via a powered USB hub, and not directly to the USB port.
 - For best performance, operate at 1°C (33.8°F) – 35°C (95°F).
 - Visit our multi-language web site at <https://www.asus.com/support/>

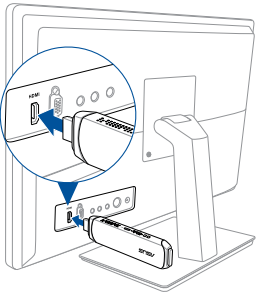
- NOTE:**
- Ensure that the air vents on your VivoStick are not blocked or else overheating may occur. Use the VivoStick Holder to prevent blocking the air vents.
 - Place your VivoStick or powered USB hub near the side of your monitor to ensure that wireless signals are not obstructed.
 - Use the USB 2.0 port to connect external devices to maintain the quality of your wireless connections.
 - Use a keyboard and mouse to set up the device when using it for the first time. USB hub, keyboard and mouse are for reference only and not included.
 - Any peripheral over 500 mA (USB 2.0) or 900 mA (USB 3.0) current draw should be connected via a powered USB hub, and not directly to the USB port.
 - For best performance, operate at 1°C (33.8°F) – 35°C (95°F).
 - Visit our multi-language web site at <https://www.asus.com/support/>

3. Place your VivoStick into the VivoStick Holder, then plug your VivoStick into an HDMI port.

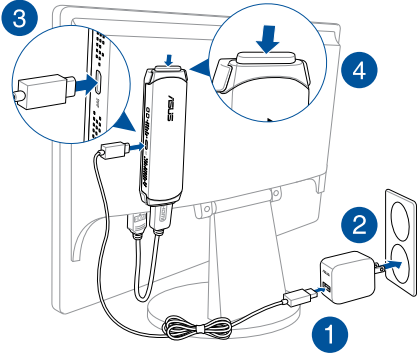
Connecting VivoStick



1. Remove the cap.



2. Plug your VivoStick into an HDMI port.



4. Connect the power into your VivoStick and press the power button for one (1) second.

NOTE: Ensure to use the bundled power adapter to prevent damage to the device.

VivoRemote APP



Android

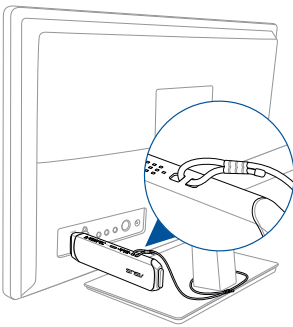


iOS



Scan the QR code, or download the VivoRemote APP from the **Google Play Store** or **iOS App Store** to use your mobile device as a remote controller.

Security Notch



Insert a wire through the security notch and then crimp the ends together with a cable sleeve.

NOTE: Security cable loop is not included.

3. Connect the power into your VivoStick and press the power button for one (1) second.

NOTE: Ensure to use the bundled power adapter to prevent damage to the device.

A Tap to search for your VivoStick again.

B Tap to enter the IP and connect your VivoStick.

NOTE: Ensure that your VivoStick and mobile device are on the same Wi-Fi network.

Safety information

Your VivoStick is designed and tested to meet the latest standards of safety for information technology equipment. However, to ensure your safety, it is important that you read the following safety instructions.

Setting up your system

- Read and follow all instructions in the documentation before you operate your system.
- Do not use this product near water or a heated source.
- Make sure you leave plenty of space around the system for ventilation.
- Use this product in environments with ambient temperatures between 1°C (33.8°F) and 35°C (95°F).
- If you use an extension cord, make sure that the total ampere rating of the devices plugged into the extension cord does not exceed its ampere rating.
- This equipment should be installed and operated with a minimum distance of 20cm between the radiator and your body.
- If you notice any of the following conditions (or if you have other safety concerns), do not use your device: crackling, hissing, popping sound, or a strong odor or smoke coming from your device. It is normal for these conditions to appear when an internal electronic component fails in a safe and controlled manner. However, these conditions may also indicate a potential safety issue. Do not assume that it is a safe failure. Turn off your device. If your device is plugged in, disconnect it from its power source, and contact technical support for assistance.
- Magnet:** Avoid placing any media that contains magnets or is sensitive to magnetism, such as credit cards, bank cards, audio/video, tapes, or magnetic memory devices, near your device as you may lose information stored on that media and devices may be severely damaged. Media containing information sensitive to magnets should be kept at least 5 cm away from your device.
- Pacemakers and other implanted medical devices:** VivoStick receives and transmits using Wi-Fi and Bluetooth technology, which can interfere with pacemakers and other implanted medical devices. If you have a pacemaker or other implanted medical device, contact your physician or medical device manufacturer to make sure it's okay to use your VivoStick.

Care during use


- Do not walk on the power cord or allow anything to rest on it.
- Do not spill water or any other liquids on your system.
- When the system is turned off, a small amount of electrical current still flows. Always unplug the power cord from the power outlets before cleaning the system.
- If you encounter the following technical problems with the product, unplug the power cord and contact a qualified service technician or your retailer.
 - The power cord or plug is damaged.
 - Liquid has been spilled into the system.
 - The system does not function properly even if you follow the operating instructions.
 - The system was dropped or the casing is damaged.
 - The system performance changes.

Lithium-Metal Battery Warning

CAUTION: Danger of explosion if battery is incorrectly replaced. Replace only with the same or equivalent type recommended by the manufacturer. Dispose of used batteries according to the manufacturer's instructions.

NO DISASSEMBLY

The warranty does not apply to the products that have been disassembled by users.



DO NOT throw the VivoStick in municipal waste. This product has been designed to enable proper reuse of parts and recycling. This symbol of the crossed out wheeled bin indicates that the product (electrical, electronic equipment, and mercury-containing button cell battery) should not be placed in municipal waste. Check local technical support services for product recycling.

Regulatory notices

REACH

Complying with the REACH (Registration, Evaluation, Authorization, and Restriction of Chemicals) regulatory framework, we publish the chemical substances in our products at ASUS REACH website at <http://csr.asus.com/english/REACH.htm>

ASUS Recycling/Takeback Services

ASUS recycling and takeback programs come from our commitment to the highest standards for protecting our environment. We believe in providing solutions for you to be able to responsibly recycle our products, batteries, other components, as well as the packaging materials. Please go to <http://csr.asus.com/english/Takeback.htm> for the detailed recycling information in different regions.

Coating Notice

IMPORTANT! To provide electrical insulation and maintain electrical safety, a coating is applied to insulate the device except on the areas where the I/O ports are located.

Federal Communications Commission Statement

This device complies with Part 15 of the FCC Rules. Operation is subject to the following two conditions:

- This device may not cause harmful interference, and
 - This device must accept any interference received including interference that may cause undesired operation.
- This equipment has been tested and found to comply with the limits for a Class B digital device, pursuant to Part 15 of the FCC Rules. These limits are designed to provide reasonable protection against harmful interference in a residential installation. This equipment generates, uses and can radiate radio frequency energy and, if not installed and used in accordance with manufacturer's instructions, may cause harmful interference to radio communications. However, there is no guarantee that interference will not occur in a particular installation. If this equipment does cause harmful interference to radio or television reception, which can be determined by turning the equipment off and on, the user is encouraged to try to correct the interference by one or more of the following measures:
- Reorient or relocate the receiving antenna.
 - Increase the separation between the equipment and receiver.
 - Connect the equipment to an outlet on a circuit different from that to which the receiver is connected.
 - Consult the dealer or an experienced radio/TV technician for help.

CAUTION: This transmitter must not be co-located or operated in conjunction with any other antenna or transmitter. Any changes or modifications not expressly approved by the grantee of this device could void the user's authority to operate the equipment.

RF exposure warning

This equipment must be installed and operated in accordance with provided instructions and the antenna(s) used for this transmitter must be installed to provide a separation distance of at least 20 cm from all persons and must not be co-located or operating in conjunction with any other antenna or transmitter. End-users and installers must be provide with antenna installation instructions and transmitter operating conditions for satisfying RF exposure compliance.

ISED Radiation Exposure Statement for Canada

This equipment complies with ISED radiation exposure limits set forth for an uncontrolled environment. To maintain compliance with ISED RF exposure compliance requirements, please avoid direct contact to the transmitting antenna during transmitting. End users must follow the specific operating instructions for satisfying RF exposure compliance.

Operation is subject to the following two conditions:

- This device may not cause interference and
- This device must accept any interference, including interference that may cause undesired operation of the device.

Compliance Statement of Innovation, Science and Economic Development Canada (ISED)

This Class B digital apparatus complies with Canadian ICES-003, RSS-210, and CAN ICES-3(B)/NMB-3(B).

This device complies with Industry Canada license exempt RSS standard(s). Operation is subject to the following two conditions: (1) this device may not cause interference, and (2) this device must accept any interference, including interference that may cause undesired operation of the device.

Déclaration de conformité de Innovation, Sciences et Développement économique Canada (ISED)

Cet appareil numérique de classe B est conforme aux normes canadiennes ICES-003, RSS-210 et CAN ICES-3(B)/NMB-3(B).

Cet appareil est conforme aux normes CNR exemptes de licence d'Industrie Canada. Le fonctionnement est soumis aux deux conditions suivantes : (1) cet appareil ne doit pas provoquer d'interférences et (2) cet appareil doit accepter toute interférence, y compris celles susceptibles de provoquer un fonctionnement non souhaité de l'appareil.

Wireless Operation Channel for Different Domains

N. America	2.412-2.462 GHz	Ch01 through CH11
Japan	2.412-2.484 GHz	Ch01 through Ch14
Europe ETSI	2.412-2.472 GHz	Ch01 through Ch13

Regional notice for Singapore

Complies with IMDA Standards DB103778

This ASUS product complies with IMDA Standards.

Regional notice for California



Cancer and Reproductive Harm - www.P65Warnings.ca.gov

ASUS Contact Information

ASUSTeK COMPUTER INC.

Address 4F, No. 150 Li-Te Road, Peitou, Taipei 112, Taiwan
Telephone +886-2-2894-3447
Fax +886-2-2890-7798
Website <http://www.asus.com>
Technical Support
Telephone +86-21-38429911
Fax +86-21-58668722, ext. 9101#
Online support <http://qr.asus.com/techserv>

ASUS COMPUTER INTERNATIONAL (America)

Address 800 Corporate Way, Fremont, CA 94539, USA
Telephone +1-510-739-3777
Fax +1-510-608-4555
Website <http://usa.asus.com>
Technical Support
Support fax +1-812-284-0883
General support +1-812-282-4555
Online support <http://qr.asus.com/techserv>

ASUS COMPUTER GmbH (Germany and Austria)

Address Harkort Str. 21-23, D-40880 Ratingen, Germany
Fax +49-2102-959931
Website <http://www.asus.com/de>
Online contact <http://eu-rma.asus.com/sales>
Technical Support
Telephone +49-2102-5789555
Support Fax +49-2102-959911
Online support <http://qr.asus.com/techserv>

DECLARATION OF CONFORMITY
Per FCC Part 2 Section 2. 1077(a)

FC

Responsible Party Name: Asus Computer International

Address: 800 Corporate Way, Fremont, CA 94539.

Phone/Fax No: (510)739-3777/(510)608-4555

hereby declares that the product

Product Name : VivoStick

Model Number : TS10


Conforms to the following specifications:

☒ FCC Part 15, Subpart B, Unintentional Radiators

Supplementary Information:

This device complies with part 15 of the FCC Rules. Operation is subject to the following two conditions: (1) This device may not cause harmful interference, and (2) this device must accept any interference received, including interference that may cause undesired operation.

Representative Person's Name : Steve Chang / President

Signature : 

Date : Feb. 22, 2016

Ver. 140331