

Philips
LCD monitor

S Line
27" (68.6 cm)
2560 x 1440 (QHD)

275S1AE



Reliable and essential

for daily productivity

Philips S Line monitor gives essential features for daily productivity and work comfortably. Virtually frameless with crystal-clear QHD for an expanded and clear view. EasyRead and Eye comfort with TUV certified to reduce eye fatigue.

Great performance

- IPS technology for full colours and wide viewing angles
- Crystal clear images with Quad HD 2560 x 1440 pixels
- SmartImage pre-sets for easy optimised image settings
- Effortlessly smooth action with Adaptive-Sync technology

Designed for comfortable productivity

- TUV Eye Comfort certified to reduce eye fatigue
- LowBlue Mode for easy-on-the-eyes productivity
- Less eye fatigue with Flicker-Free technology
- EasyRead mode for a paper-like reading experience

Perfectly designed for your space

- Built-in speakers for audio without desktop clutter
- SmartErgoBase enables user-friendly ergonomic adjustments

Eco-friendly materials for sustainability

- Designed to meet environmental standards



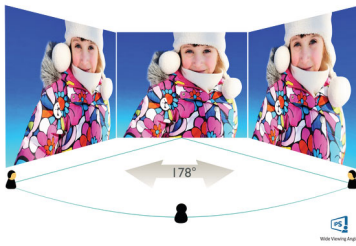
PHILIPS

LCD monitor
S Line 27" (68.6 cm), 2560 x 1440 (QHD)

275S1AE/00

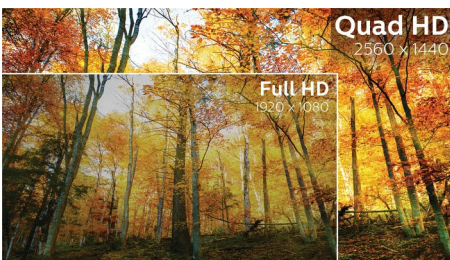
Highlights

IPS technology



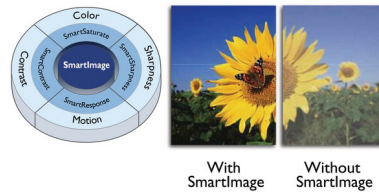
IPS displays use advanced technology that gives you extra-wide viewing angles of 178/178 degrees, making it possible to view the display from almost any angle — even in 90-degree Pivot mode! Unlike standard TN panels, IPS displays gives you remarkably crisp images with vivid colours, making it ideal not only for Photos, films and web browsing, but also for professional applications that demand colour accuracy and consistent brightness at all times.

CrystalClear images



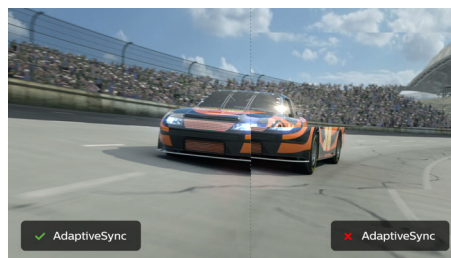
These Philips screens deliver Crystal Clear, Quad HD 2560 x 1440 or 2560 x 1080 pixel images. Utilising high-performance panels with high-density pixel count, enabled by high-bandwidth sources like Displayport, HDMI and Dual link DVI, these new displays will make your images and graphics come alive. Whether you are a demanding professional requiring extremely detailed information for CAD-CAM solutions, a user of 3D graphic applications or a financial wizard working on huge spreadsheets, Philips displays will give you Crystal Clear images.

SmartImage



SmartImage is an exclusive leading edge Philips technology that analyses the content displayed on your screen and optimises your display performance. This user-friendly interface allows you to select various modes, like Office, Photo, Movie, Game, Economy etc., to fit the application in use. Based on the selection, SmartImage dynamically optimises the contrast, colour saturation and sharpness of images and videos for ultimate display performance. The Economy mode option offers you major power savings. All in real time at the touch of a single button!

Adaptive-Sync technology



Gaming shouldn't be a choice between choppy gameplay or broken frames. Get fluid, artefact-free performance at virtually any frame rate with Adaptive-Sync technology, smooth quick refresh and ultra-fast response time.

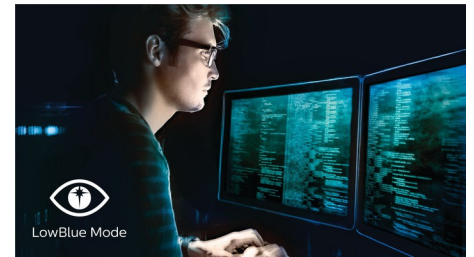
TUV Rheinland Eye Comfort



Philips displays meet TUV Rheinland Eye Comfort standard to prevent eye strain caused

by prolonged computer use. With TUV Eye Comfort certification, Philips displays ensure flicker-free, low-blue mode, no disturbing reflections, a wide viewing angle, less reduction of image quality from different angles and ergonomic stand designs for an ideal viewing experience. Keep your eyes healthy and boost work productivity.

LowBlue Mode



Studies have shown that just as ultra-violet rays can cause eye damage, shortwave-length blue light rays from LED displays can cause eye damage and affect vision over time. Developed for wellbeing, the Philips LowBlue Mode setting uses a smart software technology to reduce harmful shortwave blue light.

Flicker-Free technology



Due to the way brightness is controlled on LED-backlit screens, some users experience flicker on their screen which causes eye fatigue. Philips Flicker-Free technology applies a new solution to regulate brightness and reduce flicker for more comfortable viewing.



Specifications

Picture/Display

- LCD panel type: IPS technology
- Adaptive sync
- Backlight type: W-LED system
- Panel Size: 27 inch/68.6 cm
- Display Screen Coating: Anti-Glare, 3H, Haze 25%
- Effective viewing area: 596.736 (H) x 335.664 (V)
- Aspect ratio: 16:9
- Maximum resolution: 2560 x 1440 @ 75 Hz*
- Pixel Density: 109 PPI
- Response time (typical): 4 ms (Grey to Grey)*
- Brightness: 300 cd/m²
- Contrast ratio (typical): 1000:1
- SmartContrast: 50,000,000:1
- Pixel pitch: 0.2331 x 0.2331 mm
- Viewing angle: 178° (H)/178° (V), @ C/R > 10
- Picture enhancement: SmartImage
- Colour gamut (typical): NTSC 110%*, sRGB 123%*
- Display colours: 16.7 M
- Scanning Frequency: 30–114 kHz (H)/48–75 Hz (V)
- sRGB
- Flicker-free
- LowBlue Mode
- EasyRead

Connectivity

- Signal Input: DVI-D (digital, HDCP), DisplayPort 1.2, HDMI 1.4
- HDCP: HDCP 1.4 (DVI/DP/HDMI)
- Sync Input: Separate Sync
- Audio (In/Out): Audio out

Convenience

- Built-in Speakers: 2 W x 2
- User convenience: SmartImage, Input, Brightness, Menu, Power On/Off
- Control software: SmartControl
- OSD Languages: Brazil Portuguese, Czech, Dutch, English, French, Finnish, German, Greek, Hungarian, Italian, Japanese, Korean, Portuguese, Polish, Russian, Simplified Chinese, Spanish, Swedish, Traditional Chinese, Turkish, Ukrainian
- Other convenience: Kensington lock, VESA mount (100 x 100 mm)
- Plug and Play Compatibility: DDC/CI, Mac OS X, sRGB, Windows 10 / 8.1 / 8 / 7

Stand

- Height adjustment: 130 mm
- Pivot: +/- 90 degree
- Swivel: +/- 180 degree
- Tilt: -5~25 degree

Power

- ECO mode: 15.7 W (typ.)
- On mode: 17.3 W (typ.) (EnergyStar test method)
- Standby mode: 0.3 W
- Off mode: 0.3 W
- Energy Label Class: F
- Power LED indicator: Operation - White, Standby mode - White (flashing)
- Power supply: Built-in, 100–240 VAC, 50–60 Hz

Dimensions

- Product with stand (max height): 613 x 537 x 205 mm
- Product without stand (mm): 613 x 366 x 51 mm
- Packaging in mm (W x H x D): 700 x 456 x 216 mm

Weight

- Product with stand (kg): 6.44 kg
- Product without stand (kg): 4.57 kg
- Product with packaging (kg): 8.55 kg

Operating conditions

- Temperature range (operation): 0°C to 40°C °C
- Temperature range (storage): -20°C to 60°C °C
- Relative humidity: 20%-80 %
- Altitude: Operation: +12,000 ft (3658 m), Non-operation: +40,000 ft (12,192 m)
- MTBF (demonstrated): 70,000 hrs (excluded backlight)

Sustainability

- Environmental and energy: EnergyStar 8.0, EPEAT*, TCO Certified, RoHS
- Recyclable packaging material: 100 %
- Post-consumer recycled plastic: 85%
- Specific Substances: Mercury free, PVC/BFR free housing

Compliance and standards

- Regulatory Approvals: CB, EPA, FCC Class B, ICES-003, CE Mark, TUV/GS, TUV Ergo, SEMKO, CU-EAC, EAEU RoHS, UKRAINIAN, CCC, CEL, CECP, TUV Eye Comfort certified

Cabinet

- Foot: Black
- Rear cover: Black
- Front bezel: Black
- Finish: Texture

What's in the box?

- Monitor with stand
- Cables: HDMI cable, DP cable, Power cable
- User Documentation



Issue date 2021-09-24

Version: 3.2.2

12 NC: 8670 001 65134
EAN: 87 12581 76441 8

© 2021 Koninklijke Philips N.V.
All Rights reserved.

Specifications are subject to change without notice.
Trademarks are the property of Koninklijke Philips N.V.
or their respective owners.

www.philips.com

* "IPS" word mark / trademark and related patents on technologies belong to their respective owners.
* Response time value equal to SmartResponse
* The maximum resolution works for either HDMI input or DP input.
* NTSC Area based on CIE 1976
* sRGB Area based on CIE1931
* EPEAT rating is valid only where Philips registers the product. Please visit <https://www.epeat.net/> for registration status in your country.
* The monitor may look different from feature images.