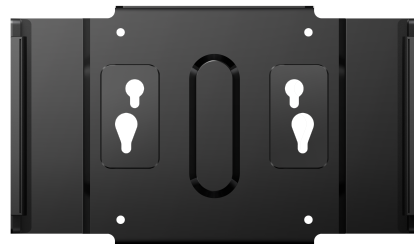


PHILIPS

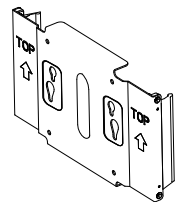
VESA Bracket

BS9B1617TB



Quick Start

Register your product and get support at www.philips.com/welcome



⚙ x 2 (M3 x 4mm)

⚙ x 4 (M4 x 8mm)



Version: BS9B1617TBQ1T



Printed in China

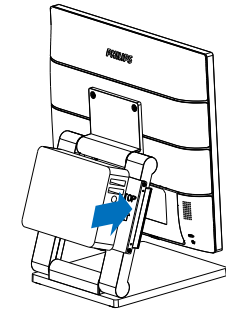
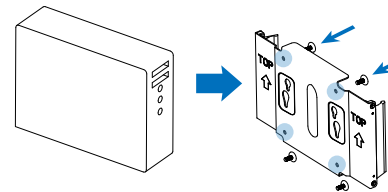


Q41G78D481304A

Compatible with Philips Base of 162B9T/172B9T

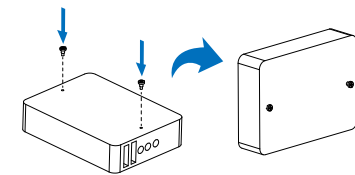
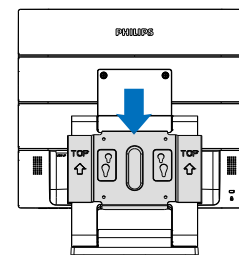
PC:

- 1 Align holes of VESA compliant device with those of bracket and screw up with the screws provided.
- 2 Clip the assembled VESA onto the bracket.



NUC:

- 1 Follow the arrows indicated on the the bracket, then slide the bracket on the stand until it's fixed.
- 2 Secure two screws to the rear cover of the NUC.



- 3 Slide the screws from up to down.

4

